

Examples given for  $\text{C}\Delta 7$   
except where otherwise noted.

# Switches

Ted Greene  
(undated)

(Try from either end)

Try in all scales, modes, etc., on all degrees of scale.

V = Voicing Group  
for Ted's V-System

V-2 --> V-4      V-2 --> V-4      V-2 --> V-3      V-2 --> V-4

1

V-2 --> V-3      V-2 --> V-1      V-4 --> V-5      V-4 --> V-5

$\text{B}\Delta 7$   
vii  $\emptyset$

or delay

5  
or G

5

V-4 --> V-6      V-4 --> V-6      V-4 --> V-2      V-4 --> V-5

$\text{Dm}^7$   
ii . . . . .

9

V-5 --> V-3      V-5 --> V-8      V-5 --> V-3      V-5 --> V-8

$\text{Dm}^7$   
ii . . . . .

13

V-5 --> V-4      V-5 --> V-8      V-5 --> V-4      V-5 --> V-8

$\text{Dm}^7$

17

V-1 --> V-2      V-10 --> V-8      V-10 --> V-8      V-10 --> V-8

And further  
both ways

$\text{Dm}^7$   
ii

$\text{Am}^7$   
vi

21

V-3 --> V-5      V-5 --> V-8      V-4 --> V-5

V  $G^7$       IV  $F$        $F\sharp B^7$       To C  $\frac{6}{4}$

V-4 --> V-5      V-4 --> V-6      V-4 --> V-6

$A B^7$        $F\sharp B^7$        $A B^7$

----- Do on i, bvi, iv -----

V-7 --> V-6      V-7 --> V-6      V-5 --> V-3      V-5 --> V-3

$B B^7$        $D B^7$        $F\sharp B^7$        $A B^7$

Also try chromatic switches on these.

V-6 --> V-4      V-6 --> V-7      V-8 --> V-5

$D\sharp B^7$        $D\sharp B^7$        $D\sharp B^7$

V-4 --> V-2      V-5 --> V-3      V-2 --> V-1      V-8 --> V-10

$D\sharp B^7$        $D\sharp B^7$        $D\sharp B^7$        $D\sharp B^7$

8va ----- 1

V-4 --> V-5      V-3 --> V-2      V-7 --> V-12

$D\sharp B^7$        $D\sharp B^7$        $D\sharp B^7$

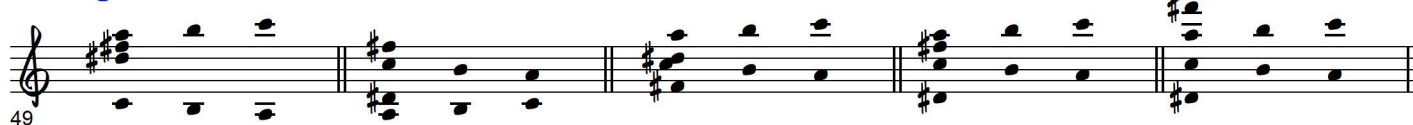
Use these on  $II^7b9$  in key of A or Am . . . . .

V-4 --> V-6      V-2 --> V-4      V-1 --> V-2      V-5 --> V-8

$B^7b9$

V-6 --> V-7 V-5 --> V-3 V-2 --> V-3 V-4 --> V-5 V-8 --> V-10

B7b9 .....



7  $\frac{6}{5}$  switches

V-2 --> V-4 V-4 --> V-6 V-5 --> V-8

A7 .....



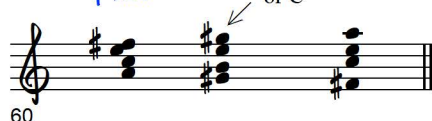
V-1 --> V-2 V-3 --> V-5 V-6 --> V-7



V-1 --> V-2

F#b7

or C



Try all switches on Cm6 1) [6 + 5] & 2) [5 + 3];  
also Cm with two 5ths in contrary motion.  
Also?

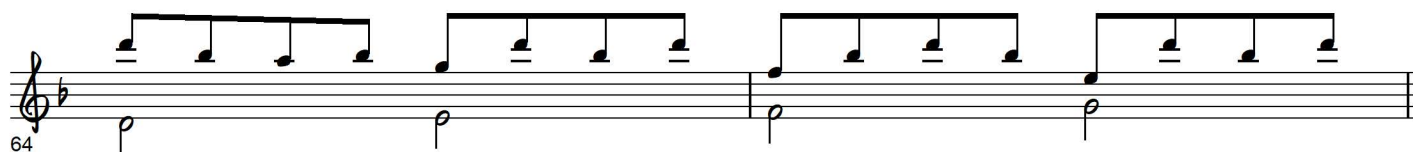
Great Sequence with Voice-switch:

BbΔ7/D

Eb7

Bb/F

Eb7/G



Am7/C

Dm7

Am/E

Dm7/F

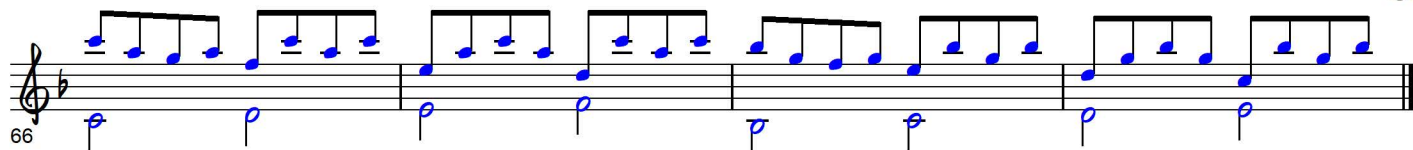
Gm7/Bb

C7

Gm/D

C7/E

OR →



→ Gm7/Bb

C7

D

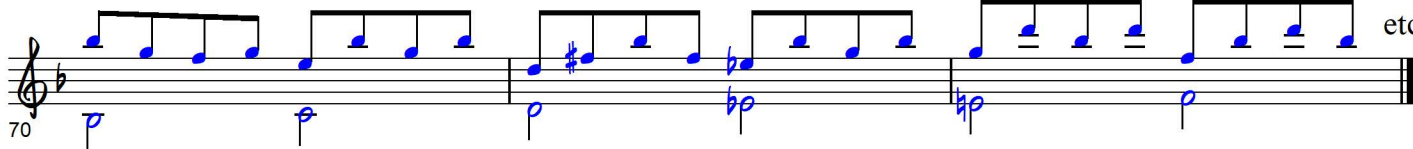
D7

Eb

Eb7

Bb/F

etc.



"SWITCHES" (TRY FROM EITHER END) TRY IN ALL SCANS, MODES, etc.,  
on all degrees of scale

Handwritten musical score for "The Great Escape" by The Beatles. The score is written on ten staves, with the top three staves representing guitar and the bottom seven staves representing vocal parts. The music is in G major and 4/4 time. The guitar part features a complex, melodic line with many accidentals and ties. The vocal parts are written in a simple, rhythmic style with lyrics. The score includes several handwritten annotations and markings:

- on all degrees of scale** (written above the top staff)
- on all degrees of scale** (written above the second staff)
- on all degrees of scale** (written above the third staff)
- on all degrees of scale** (written above the fourth staff)
- on all degrees of scale** (written above the fifth staff)
- on all degrees of scale** (written above the sixth staff)
- on all degrees of scale** (written above the seventh staff)
- on all degrees of scale** (written above the eighth staff)
- on all degrees of scale** (written above the ninth staff)
- on all degrees of scale** (written above the tenth staff)
- on all degrees of scale** (written above the eleventh staff)
- on all degrees of scale** (written above the twelfth staff)
- on all degrees of scale** (written above the thirteenth staff)
- on all degrees of scale** (written above the fourteenth staff)
- on all degrees of scale** (written above the fifteenth staff)
- on all degrees of scale** (written above the sixteenth staff)
- on all degrees of scale** (written above the seventeenth staff)
- on all degrees of scale** (written above the eighteenth staff)
- on all degrees of scale** (written above the nineteenth staff)
- on all degrees of scale** (written above the twentieth staff)
- on all degrees of scale** (written above the twenty-first staff)
- on all degrees of scale** (written above the twenty-second staff)
- on all degrees of scale** (written above the twenty-third staff)
- on all degrees of scale** (written above the twenty-fourth staff)
- on all degrees of scale** (written above the twenty-fifth staff)
- on all degrees of scale** (written above the twenty-sixth staff)
- on all degrees of scale** (written above the twenty-seventh staff)
- on all degrees of scale** (written above the twenty-eighth staff)
- on all degrees of scale** (written above the twenty-ninth staff)
- on all degrees of scale** (written above the thirtieth staff)
- on all degrees of scale** (written above the thirty-first staff)
- on all degrees of scale** (written above the thirty-second staff)
- on all degrees of scale** (written above the thirty-third staff)
- on all degrees of scale** (written above the thirty-fourth staff)
- on all degrees of scale** (written above the thirty-fifth staff)
- on all degrees of scale** (written above the thirty-sixth staff)
- on all degrees of scale** (written above the thirty-seventh staff)
- on all degrees of scale** (written above the thirty-eighth staff)
- on all degrees of scale** (written above the thirty-ninth staff)
- on all degrees of scale** (written above the fortieth staff)
- on all degrees of scale** (written above the forty-first staff)
- on all degrees of scale** (written above the forty-second staff)
- on all degrees of scale** (written above the forty-third staff)
- on all degrees of scale** (written above the forty-fourth staff)
- on all degrees of scale** (written above the forty-fifth staff)
- on all degrees of scale** (written above the forty-sixth staff)
- on all degrees of scale** (written above the forty-seventh staff)
- on all degrees of scale** (written above the forty-eighth staff)
- on all degrees of scale** (written above the forty-ninth staff)
- on all degrees of scale** (written above the fiftieth staff)
- on all degrees of scale** (written above the fifty-first staff)
- on all degrees of scale** (written above the fifty-second staff)
- on all degrees of scale** (written above the fifty-third staff)
- on all degrees of scale** (written above the fifty-fourth staff)
- on all degrees of scale** (written above the fifty-fifth staff)
- on all degrees of scale** (written above the fifty-sixth staff)
- on all degrees of scale** (written above the fifty-seventh staff)
- on all degrees of scale** (written above the fifty-eighth staff)
- on all degrees of scale** (written above the fifty-ninth staff)
- on all degrees of scale** (written above the sixtieth staff)
- on all degrees of scale** (written above the sixty-first staff)
- on all degrees of scale** (written above the sixty-second staff)
- on all degrees of scale** (written above the sixty-third staff)
- on all degrees of scale** (written above the sixty-fourth staff)
- on all degrees of scale** (written above the sixty-fifth staff)
- on all degrees of scale** (written above the sixty-sixth staff)
- on all degrees of scale** (written above the sixty-seventh staff)
- on all degrees of scale** (written above the sixty-eighth staff)
- on all degrees of scale** (written above the sixty-ninth staff)
- on all degrees of scale** (written above the seventieth staff)
- on all degrees of scale** (written above the seventy-first staff)
- on all degrees of scale** (written above the seventy-second staff)
- on all degrees of scale** (written above the seventy-third staff)
- on all degrees of scale** (written above the seventy-fourth staff)
- on all degrees of scale** (written above the seventy-fifth staff)
- on all degrees of scale** (written above the seventy-sixth staff)
- on all degrees of scale** (written above the seventy-seventh staff)
- on all degrees of scale** (written above the seventy-eighth staff)
- on all degrees of scale** (written above the seventy-ninth staff)
- on all degrees of scale** (written above the eightieth staff)
- on all degrees of scale** (written above the eighty-first staff)
- on all degrees of scale** (written above the eighty-second staff)
- on all degrees of scale** (written above the eighty-third staff)
- on all degrees of scale** (written above the eighty-fourth staff)
- on all degrees of scale** (written above the eighty-fifth staff)
- on all degrees of scale** (written above the eighty-sixth staff)
- on all degrees of scale** (written above the eighty-seventh staff)
- on all degrees of scale** (written above the eighty-eighth staff)
- on all degrees of scale** (written above the eighty-ninth staff)
- on all degrees of scale** (written above the ninetieth staff)
- on all degrees of scale** (written above the ninety-first staff)
- on all degrees of scale** (written above the ninety-second staff)
- on all degrees of scale** (written above the ninety-third staff)
- on all degrees of scale** (written above the ninety-fourth staff)
- on all degrees of scale** (written above the ninety-fifth staff)
- on all degrees of scale** (written above the ninety-sixth staff)
- on all degrees of scale** (written above the ninety-seventh staff)
- on all degrees of scale** (written above the ninety-eighth staff)
- on all degrees of scale** (written above the ninety-ninth staff)
- on all degrees of scale** (written above the one hundredth staff)

try all switches on Cnnb  $(\overset{1}{6} + 5) + (\overset{2}{5} + 3)$  ; also cm with 2 5ths. in  
contrary motion  
also ?

Handwritten musical notation on a five-line staff. The notation includes notes, rests, and various musical symbols. Above the staff, there are handwritten labels: "great sequence" and "all" on the left, and "voice switch" on the right. The notation is written in a style that suggests a specific musical context, possibly a sequence or a variation of a known piece. The notes are mostly eighth and sixteenth notes, with some rests. The staff is divided into measures by vertical bar lines. There are also some handwritten annotations like "Bb" and "Eb" near the notes.