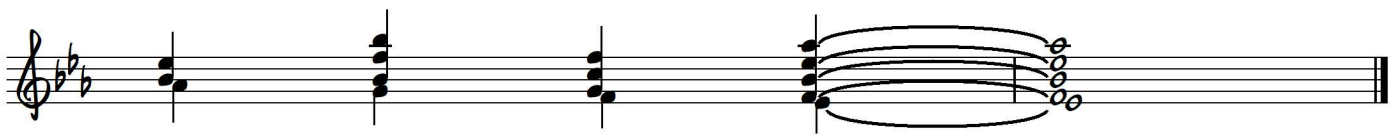
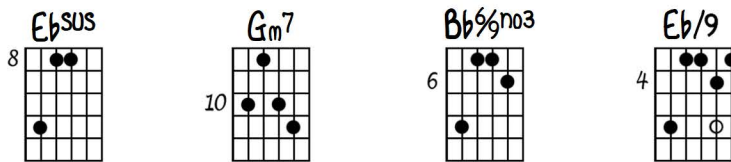
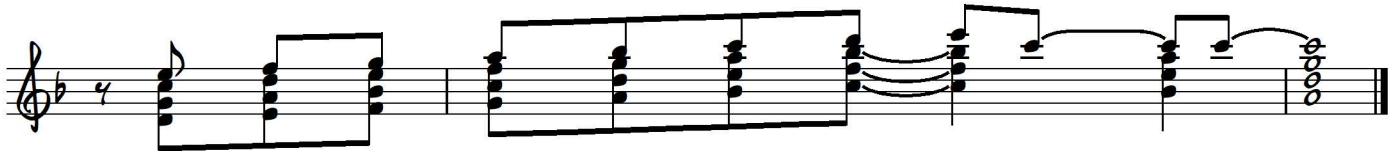
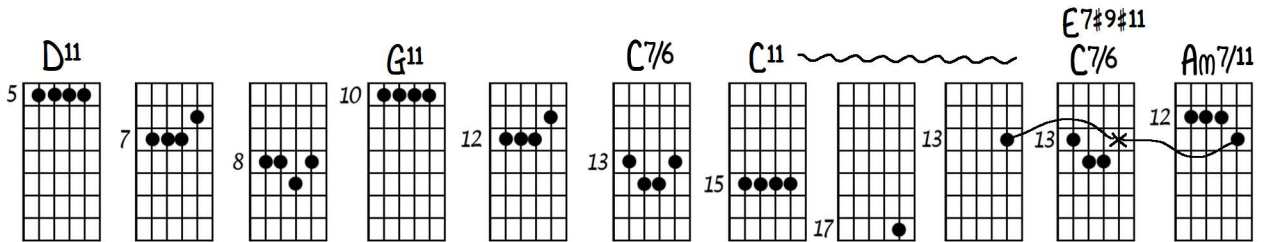
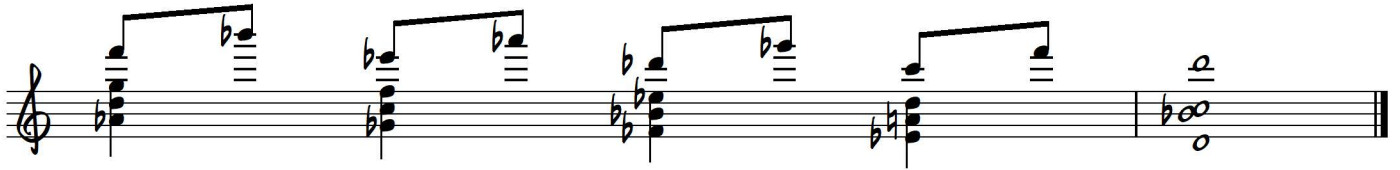
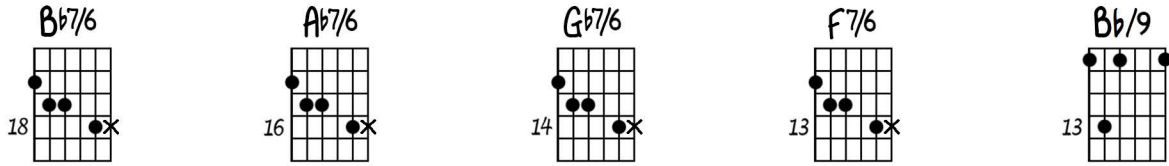






# For Choice Voicing Course

Ted Greene  
1986-01-18





# For New Choice Voicings Course – Using Dominants with Root on Top with #5

1) Top 4 Strings, 2) 2nd Set too

Also on top [string] set later

Diagram 1: Chord shapes for  $Bb^9$ ,  $F_m^6SUS$ ,  $Bb7b9\#5$ , and  $Eb/9$ . Fingering: 8, 6, 6.

Diagram 2: Chord shapes for  $F_m^6$ ,  $Bb7b9\#5$ , and  $Eb/9$ . Fingering: 10, 11, 11.

Diagram 3: Chord shapes for  $F_m^6$ ,  $Bb7^9\#5$ , and  $Eb^6$ . Fingering: 8, 6, 6.

Variation in the sustain

Diagram 4: Chord shapes for  $F_m^{13}$ ,  $Bb7^9\#5$ , and  $Eb^6$ . Fingering: 8, 6, 6. Includes fingering notes: 1 1 3 2 or 2 2 4 3.

Diagram 5: Chord shapes for  $F_m^{7/11}$ ,  $Bb^9\#5$ , and  $Eb^6$ . Fingering: 3, 6, 6.

Diagram 6: Chord shapes for  $F_m^{7/11}$ ,  $Bb7^9\#5$ , and  $Eb^{\Delta 13}$ . Fingering: 8, 6, 11.

Diagram 7: Chord shapes for  $F_m^{7/11}$ ,  $Bb^9\#5\#5$ , and  $Eb^{\Delta 13}$ . Fingering: 8, 6, 8.

Diagram 8: Chord shapes for  $F_m^{9/11}$ ,  $Bb7b9\#5$ , and  $Eb/9$ . Fingering: 6, 6, 6.

Diagram 9: Chord shapes for  $Bb^9\#5$ ,  $Bb7b9\#5$ , and  $Eb^{\Delta 9}$ . Fingering: 6, 6, 6. Includes note: 0 4 no SOPRANO SUSTAIN.

NEW CHOICE VOICINGS COURSE ① PP A ST. ② 2nd set 100  
 Resolving USING Dom's R w/ #5 10-14-87

3RD VERSION  
 (Absus dom.)  
 Fm7 Bb7

also on 4th SET later  
 Fm Bb7

8 6 6 10 11 11 8 6 6

VARIATION  
 in the  
 SUSTAIN

6 6 6

only no SOPRANO  
 SUSTAIN

49

# Altered and/or Overtone Dominants (O.D.)

Ted Greene  
1987-06-14

Root on top, top 4 strings

All this for "New Choice Voicings Course"

10

Chord diagrams shown include:

- $D7b9$ ,  $D11b9$ ,  $D7b9\#11$ ,  $D7b9N03$ ,  $D7b9+N03$ ,  $D13b9N03$ ,  $Vm9$ ,  $D9\#11N03$
- $9+no3$ ,  $\#9om7ALT$ ,  $7\#9\#11no3$ ,  $D7b5$
- $D7\#5$ ,  $\phi7/11$ ,  $D7sus\#5$ ,  $D7\#5/\#11$ ,  $D7/6/\#11$
- $DSUS/b9$ ,  $D(7)b9\#11$ ,  $D/b9N03$ ,  $D/b9\#5N03$ ,  $D6/b9N03$ ,  $D/9\#5N03$ ,  $Dm\#5$ ,  $D/b5$
- $D+$ ,  $D/\#5b5$ ,  $D7+N03$ ,  $D/\#5b5$ ,  $b9$  in the Bass,  $D/b5b9$ ,  $D/b9$
- $Dm\#5b9$ ,  $D7+/b9$ ,  $D13b9N07$ ,  $DSUSb5b9$ ,  $DSUSb9$ ,  $DSUS\#5b9$ ,  $D13susb9N07$ ,  $D11b9$ ,  $D/b9\#5\#11N03$
- $D6/b9\#11N03$ ,  $D7b9\#11N03$ ,  $D/\#5b5b9$ ,  $D6/b9N03$ ,  $D7b9N03$ ,  $D/\#5b5b9$ ,  $D7b9\#5N03$ ,  $Dm/9$
- $D/9\#5$ ,  $DSUS/9\#5$ ,  $D9\#11N03$ ,  $D/9\#5b5N03$ ,  $D/9\#5b5N03$ ,  $D9+N03$ ,  $D(7)\#9+$ ,  $D(7)\#9$
- $Dm/11$ ,  $mv9$ ,  $\#5b5$ ,  $Dm\#5b5$ ,  $Dm\#5b5$ ,  $D/\#5b5$ ,  $D/\#5b5$ ,  $D7$ ,  $D7/11/b5$

ALSO DO  $V-3^5$

Root on top  
ALT & on octave  
TOP 4 str.

# ALL THIS FOR "New Choice Voicings Course"

6-14-87

D7b9

Vm9 O.D.

10

9#m9 #9 or m7 ALT

7#9#11 no3

phi/11

b9 in the Bass

MAJ9

#5b5

ALSO DO V-3's