

WALKING BASS JUMPBACK BLUES

Playing order: ● × □ △
○ = opt.

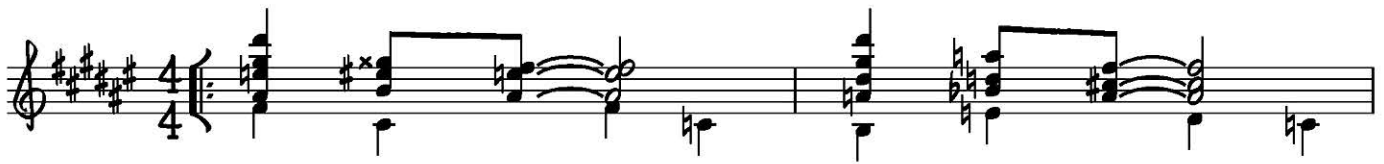
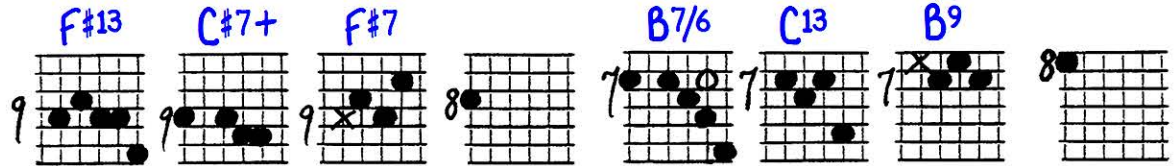
With '50's Ray Charlesish Theme

Optional: Slide into the 2nd chord too of many of these phrases

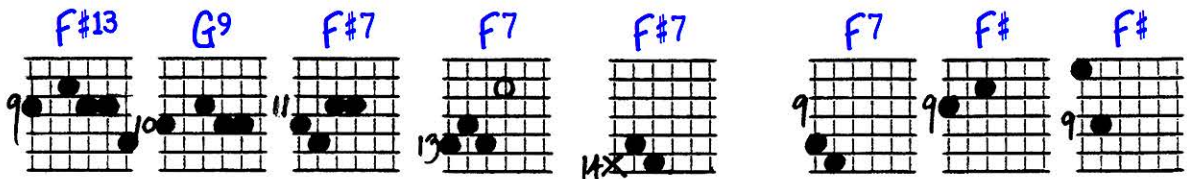
Key of F#

M.M. = 96

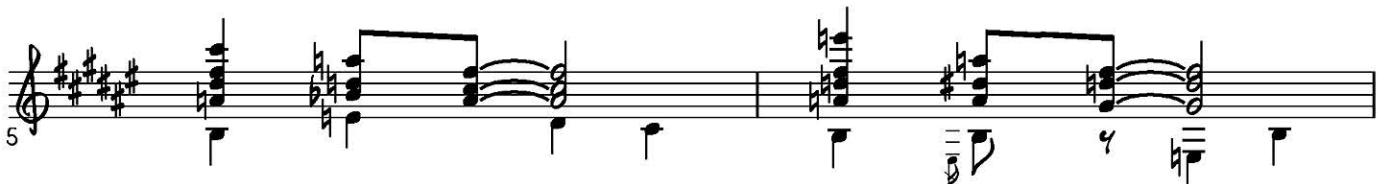
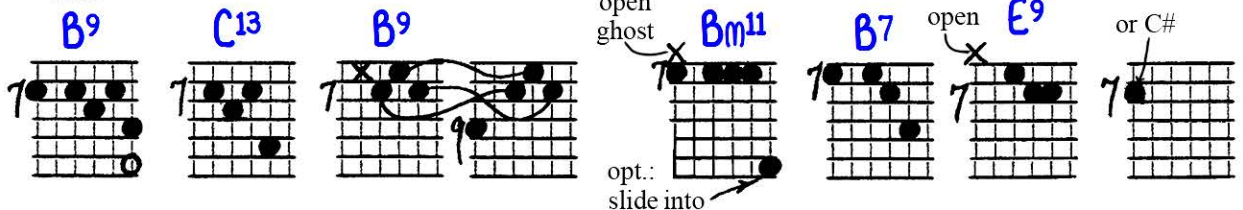
Slide into
this chord
(from below)

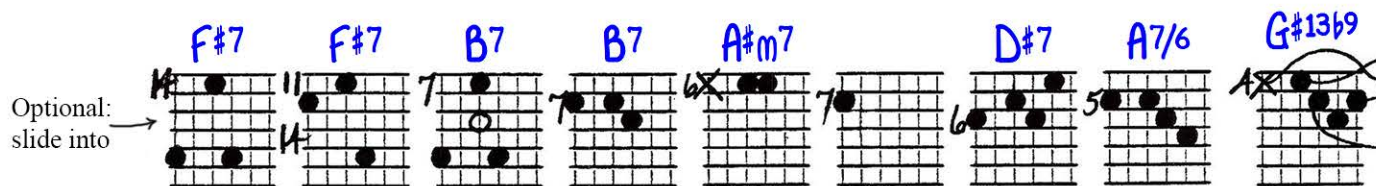
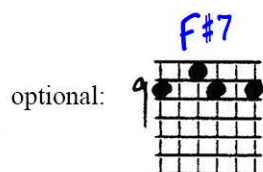


Slide



Slide





M.M. = 96
Key of F#

WALKING BASS JUMPBACK BLUES w/ 50's RAY CHARLESISH THEME

© 10-7-89
Jed Johnson

SLIDE INTO THIS CHORD 9 (from below)

SLIDE

anticipation
this one is optional

anticipation

OPTIONAL: SLIDE INTO THE 2ND CHORD too MANY of these phrases

SLIDE

anticip.

opt. = SLIDE INTO

ANTICIP.

ANTICIP.

opt. = SLIDE INTO

ANTICIP.

ANTICIP.

ANTICIP.

HAMMER-ON

ANTICIP.

on the end of the one

SLIDE

to top

OPTIONAL: for 1ST CHORD in lines above

Empty musical staves for practice.