

Baroque Modulation

Ted Greene
1980-10-05

Baroque Idea #11

Scalewise introduction of new key

2 possible groupings

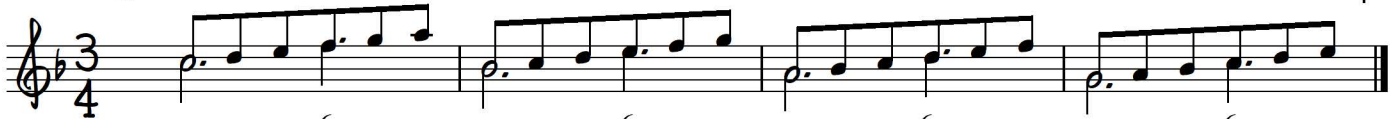
I

vii°

vi

V

8va



Baroque Analysis: V & $\frac{6}{4}$ IV & $\frac{6}{4}$ iii & $\frac{6}{4}$ ii & $\frac{6}{4}$

Then same in Bb. Eb. etc.,
and so on and make smooth
8va shifts occasionally.

Also do:

ii - I - vii° - vi, iii - ii - I - vii°,
IV - iii - ii - I, V - IV - iii - ii,
vi - V - IV - iii, vii° - vi - V - IV,
Each in cycle of keys in 4ths as [above].



BAROQUE MODULATION

10-5-80
© Ted Greene

SCALEWISE INTRODUCTION
OF NEW KEY
2 possible groupings

BAROQUE ANALYSIS: I + $\frac{6}{4}$ IV + $\frac{6}{4}$ iii + $\frac{6}{4}$ ii + $\frac{6}{4}$

Then same in Bb. Eb. etc., and so on and make smooth 8va shifts occasionally.

Also do: ii - I - vii° - vi, iii - ii - I - vii°, IV - iii - ii - I, V - IV - iii - ii, vi - V - IV - iii, vii° - vi - V - IV, Each in cycle of keys in 4ths as at left