

WATCH WHAT HAPPENS

TED GREENE
SOLO GUITAR

TUNE DOWN 1/2 STEP

MUSIC BY MICHEL LEGRAND
TRANSCRIPTION BY FRANÇOIS LEDUC

A#13 A9 G#7(b13) C#7(#9)

TAB

		4	6	5		3	0		4		5		5		4	6	5
						3	2		5		4		4		3		
						6	5		4		4		4		4		
						6	5		4		4		4		4		

F#7(b9) B11 B7sus(b9) E6 B7(#5) Emaj7 B13 E6

3	2	5	2	5	5	5	8	9	9	5	4	4	4	4	4	4	4
3	2	6	5	6	6	6	8	8	8	6	7	5	4	3	3	3	3
2	2	7	7	7	6	6	7	7	7	6	6	6	2	2	2	2	2
							0	0	6	7	7	7	7	7	7	7	7

F#13 C#m7 F#9 F#m7 B13sus

	2	4	5		2	3	5	4	2	5	4		5	4		5	4

24

A^bm11 **D^b13** **G^b maj7** **G^b6**

12 9 12 9 9 11 6-6 6-6 6 7 6 9-7-10

11 11 11 9 11 9 9 10 9 6 8 8 8 9 8 7 9

11 11 9 9 9 9 9 9 9 9 8 8 9 9

28

G^bm7 **C13** **B13** **B7(alt)** **E maj7** **B13** **E6**

7 8 7 6 6 7 4

9 10 7 7 9 9-9 4 5 7-5

8 8 8 7 8 8 8 6 6 7 6 6 0 0

8 8 7 7 6 6 7 0 7 0 0

32

F[#]9 **Bm7** **F[#]9** **F[#]13** **F[#]m9** **B11**

8 9 8 8 7 5

9 9 11 9 11 12 11 9 9 9 4 7-5-5

8 9 9-8 8 8 8 9 9 7 9 7 6 5 6 6

9 9 9 8 8 8 9 9 7 9 7 7 6 7 7

36

E6 Bm7(b5) B7(b9) E6 Bm7(b5) B7(b9)

0-0-6-7 6 5 | 6 6 4-4 5 | 0-0-6-7 0 5 | 6 6 4-4 5

7 7 7-7 6 | 7 7 7-7 6 | 7 7 7-7 6 | 7 7 7-7 6

40

E6 A9 Bbm7(b5) Eb7 Abmaj7 Eb13 Fm7 Abmaj7

($\text{♩} = \text{♩} \text{ } \text{♩}$)

0-0-5 5 6 | 6 7 6 6-5 | 4 6 6 6 | 8 8 8 8

2 5 6 6 | 4 5 6 6 | 5 6 0 0 | 13 12 12

4 5 6 6 | 6 7 6 6-5 | 4 6 6 6 | 6 0 10 10

5 6 6 6 | 6 7 6 6-5 | 4 6 6 6 | 8 8 11 11

44

Bb9 Fm7 Bb13 Bb9 Bbm9 Eb7

13 9 8 0 | 8 8 6 9 | 8 8 9 8 | 8 8 8 8

13 13 0 8 | 7 8 7 0 | 6 6 0 0 | 11 8 0 0

12 13 8 8 | 6 6 6 6 | 6 6 6 6 | 11 8 10 11

13 13 8 8 | 6 6 6 6 | 6 6 6 6 | 11 8 10 11

A^b maj7 **A maj7** **A[#] maj7** **A maj7** **A^b maj7** **E^b 13** **A^b 6**

48

13-13 14 15 14 13 13 13 8 11-9
 12-12 13 14 13 12 12 12 10 10 11-9
 10-10 11 12 11 11 11 11 11 10 10
 11 11 12 13 12 12 11 11 11 10-0

B^b 13 **Fm7** **B^b 13** **E13** **B^b m9** **B^b m7** **E^b 13**

52

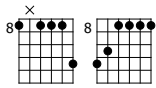
8 8 8 8 8 8 8 8 9 7 9 8 9 9 13 13
 7 7 7 7 7 7 7 7 8 7 7 7 7 12-13 12 13
 6 6 6 6 6 6 6 6 6 6 6 6 6 11 11 11 0
 6 6 8 6 0 6 8 9 10 11 11 0

A^b maj7 **D^b 13** **Dm7** **G7(alt)** **Cmaj7** **G13** **Cmaj11** **Cmaj7**

56

13 9 10 11 12 12 13 12-10-8
 12 11 10 11 12 13 12 12
 10 10 9 10 9 10 9 9
 11 11 9 9 10 9 10 9 8-9-10 10 12 12 8 8

Cm7



F#13



F13



C



F13



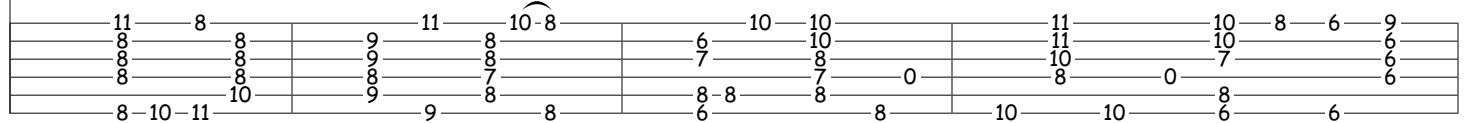
Bb maj11



Bb maj7



60



Bb m7



Eb7



Ab maj7



Eb13



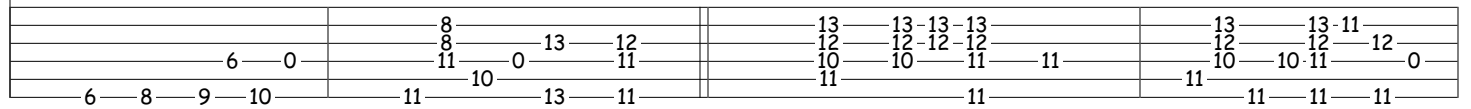
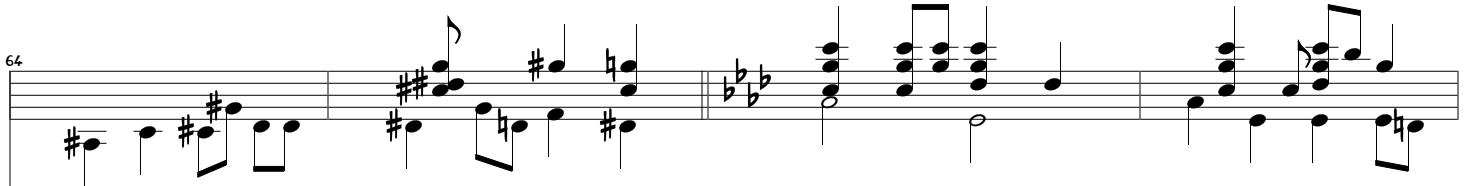
Ab maj7



Eb13



64



Bb13



Fm7(#5)



Bb13



E13



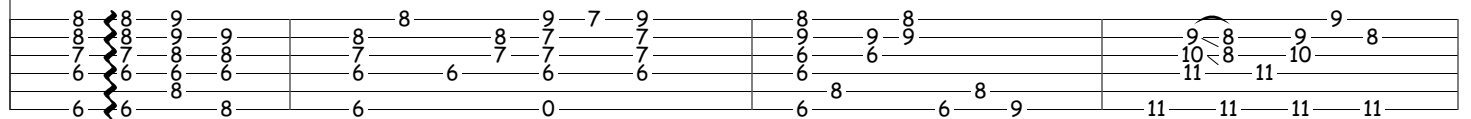
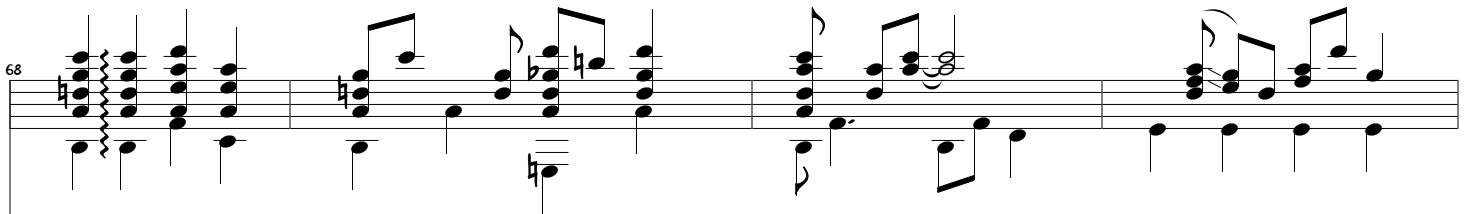
Bb m9



Eb7sus



68



A^b6 **E^bm7(b5)** **E^b7(b9)** **A^b6** **F7(#9)** **B^b13(b9)** **E^b7**

72

9 10 10 11 | 9 | 10 11 11 | 8 9 10 | 9 10 | 11 0 8 | 7 8 | 6 7 8 8 | 6 6 6 4

A^b13 **F7(#9)** **B^b7(b9)** **E^b7sus** **A^b13** **F7(#9)** **B^b7(b9)** **E^b7** **E^b7(b13)**

76

6 0 8 | 8 | 7 6 9 6 | 6 8 6 4 | 9 8 7 0 | 7 6 9 6 | 11 7 | 8 8 | 6 6

A^b7 **A13** **A^b13**

80

4 4 5 4 | 4 6 7 6 4 6 4 5 | 6 | 2 2 4 4 | 1 1 3 4 | 5 5 4 | 4