

WITH A LITTLE HELP FROM MY FRIENDS

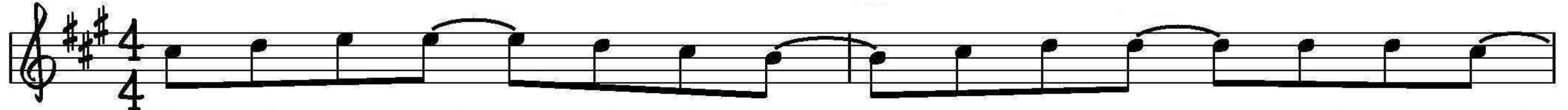
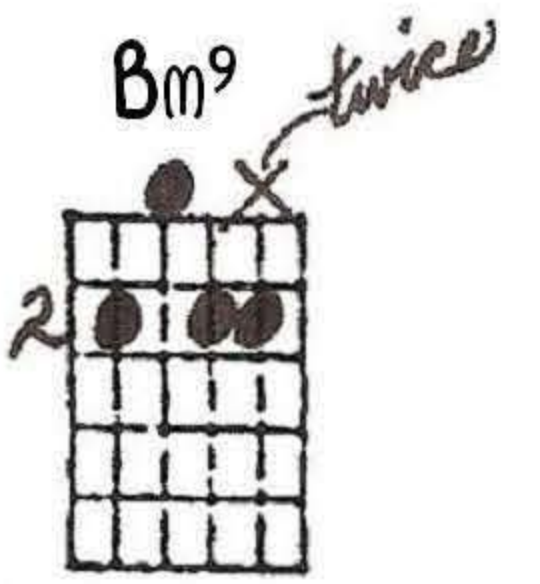
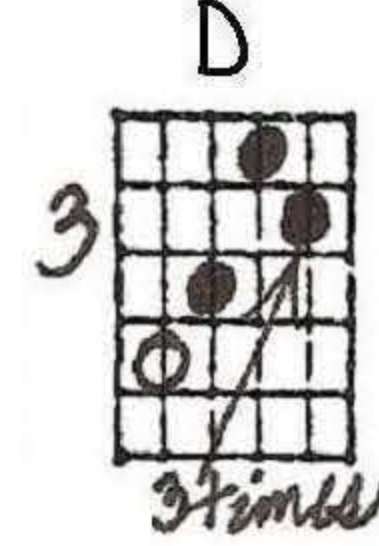
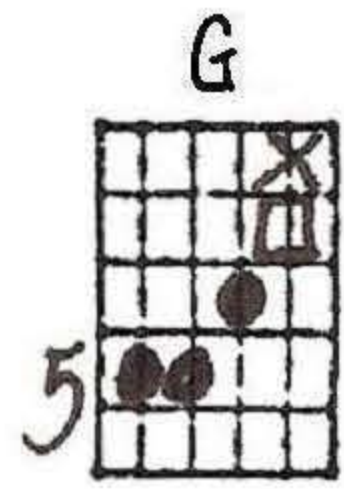
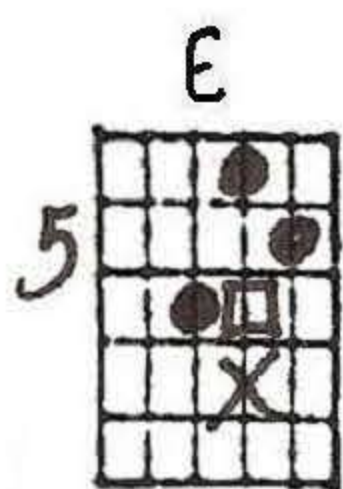
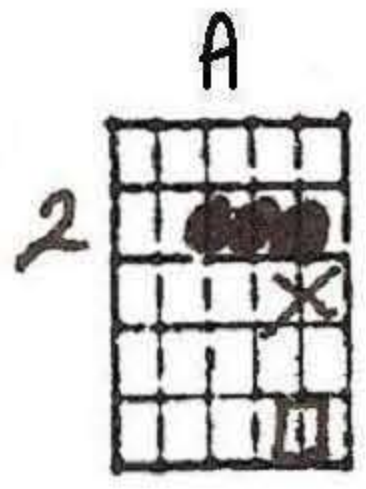
LENNON-MCCARTNEY

Ted Greene
© 1972

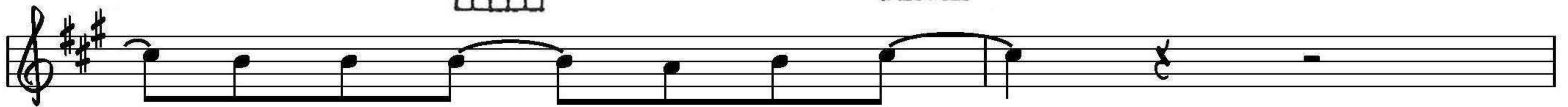
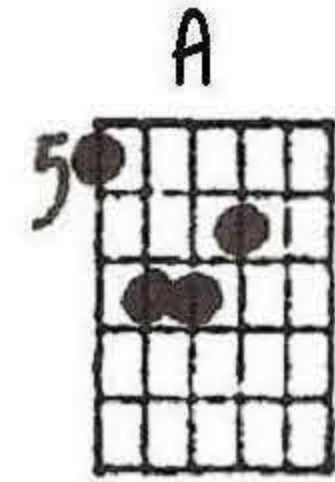
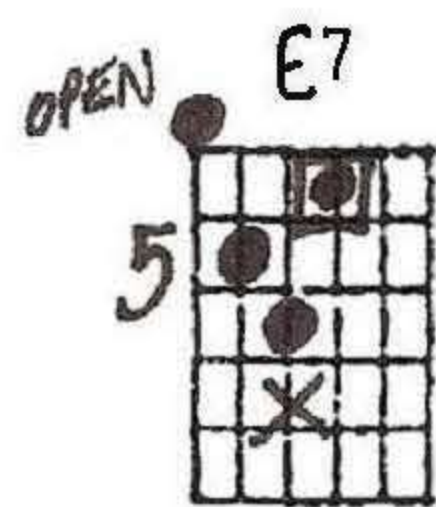
SOLO GUITAR

EASIER & INTERMEDIATE LEVEL

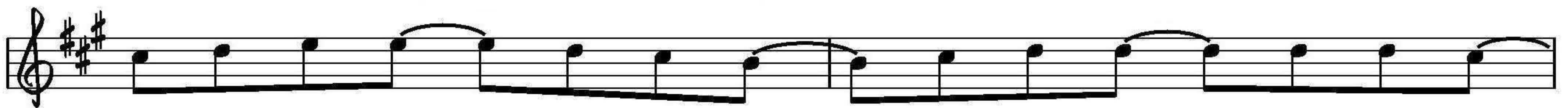
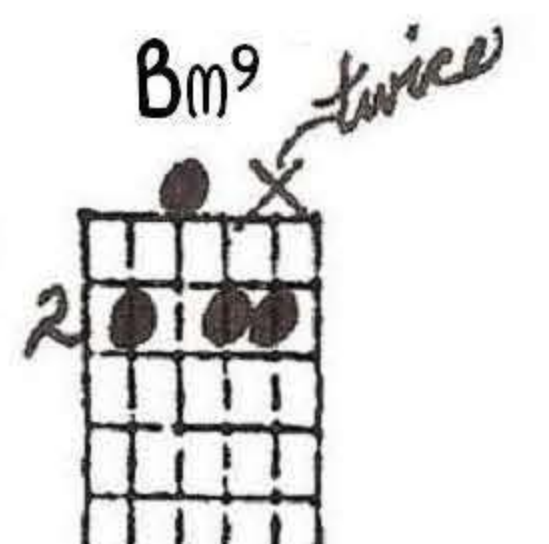
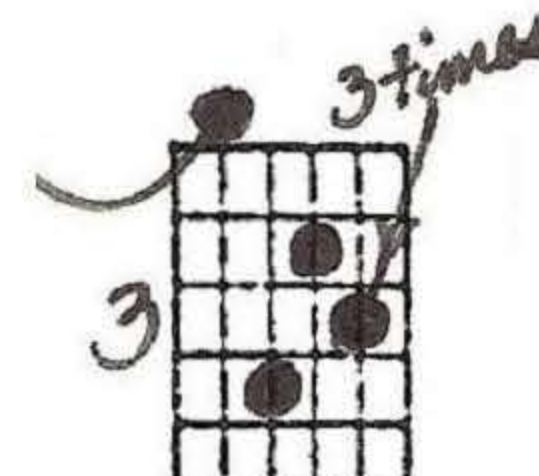
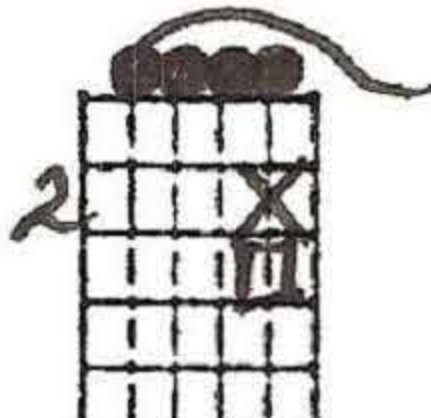
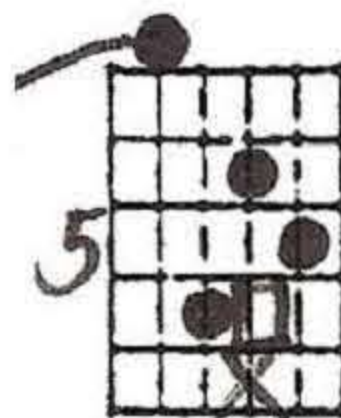
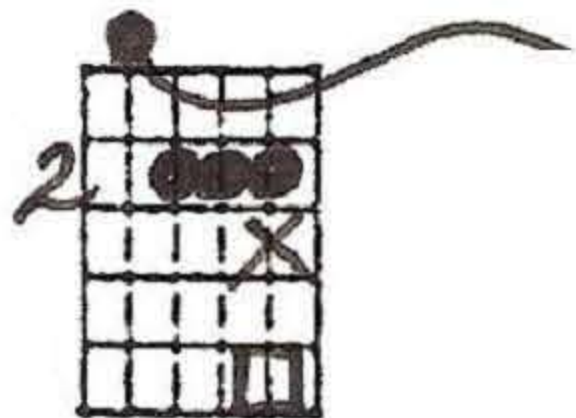
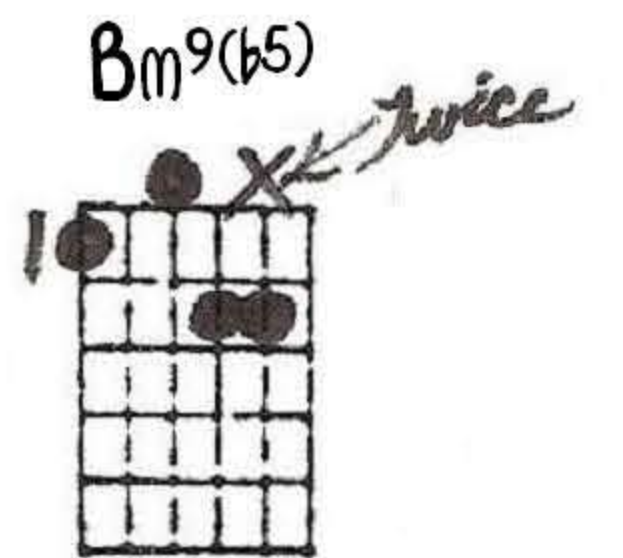
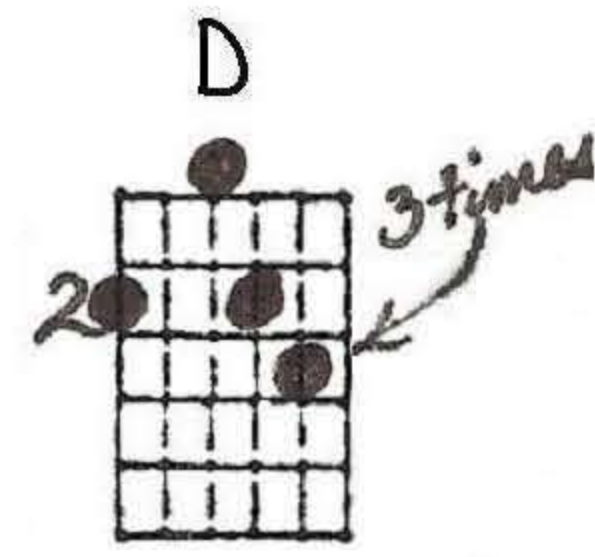
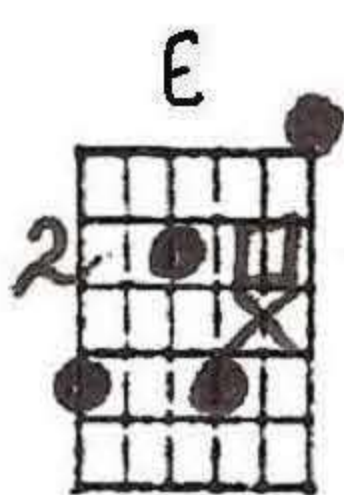
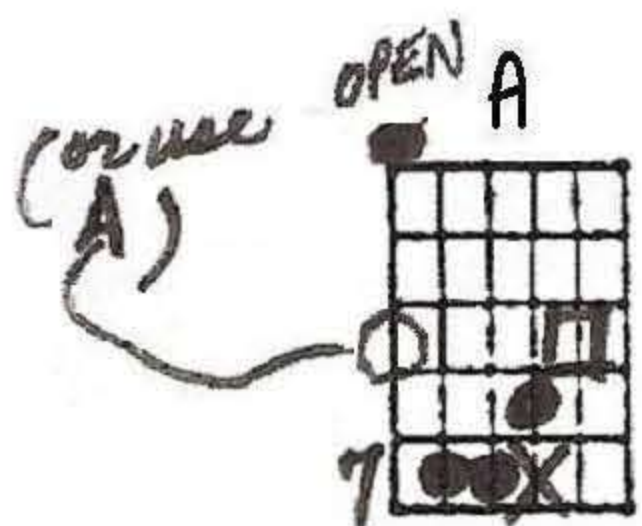
Key of A



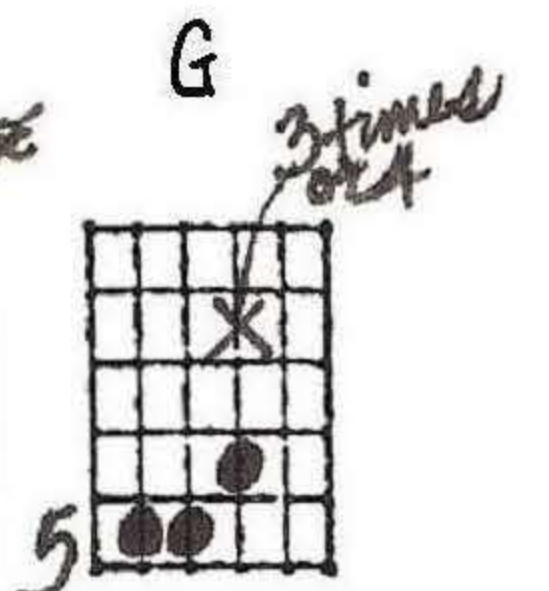
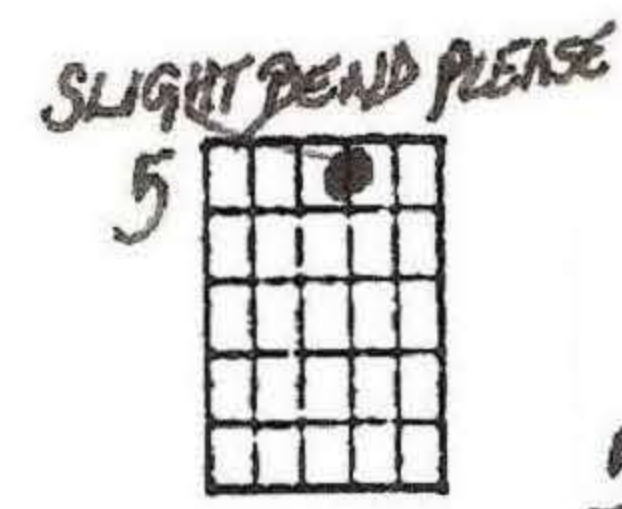
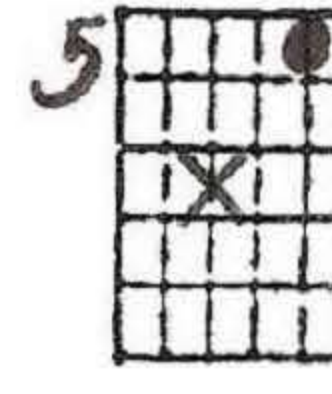
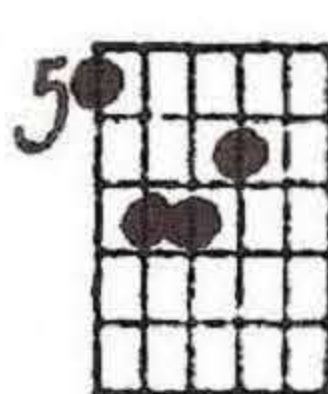
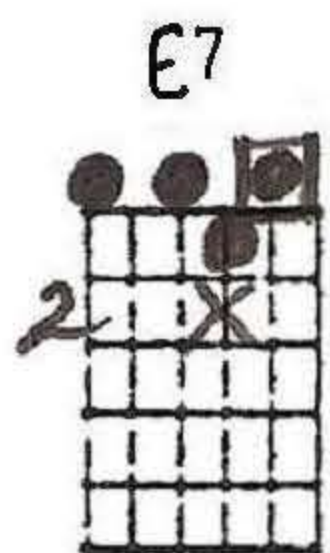
What would you think if I sang out of tune, would you stand
What do I do when my love is a way, does it wor -
Would you be - lieve in a love at first sight? Yes, I'm cer -



up and walk out on me?
ry you to be a lone?
tain that it hap - pens all the time.



Lend me your ears and I'll sing you a song and I'll try
How do I feel by the end of the day, are you sad
What do you see when you turn out the light? I can't tell



not to sing out of key. Oh, I get by
be - cause you're on your own? No, I get by
you, but I know it's mine. Oh, I get by