

PRELUDE TO A KISS

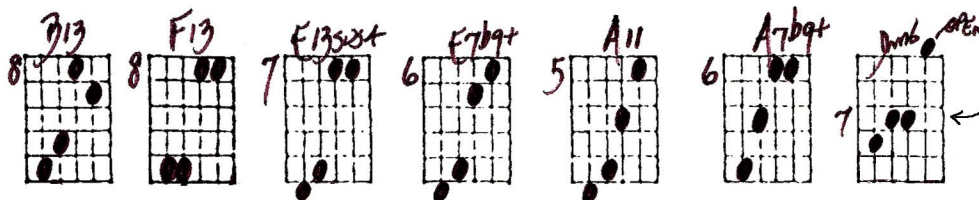
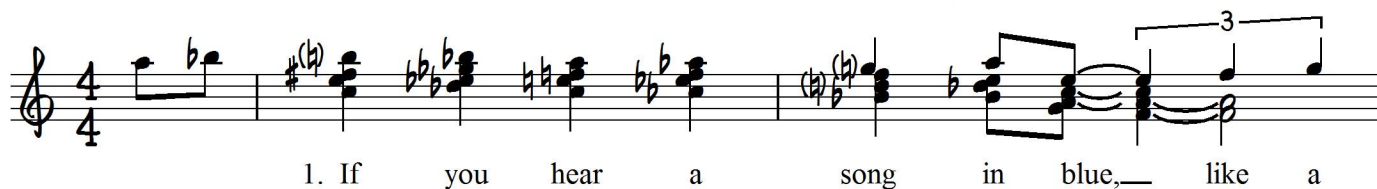
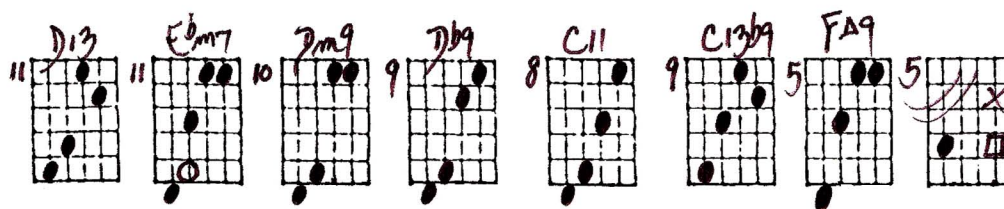
Duke ELLINGTON

Ted Greene

Playing order: ● × □ △
○ = opt.

(Key of C)

Solo GUITAR

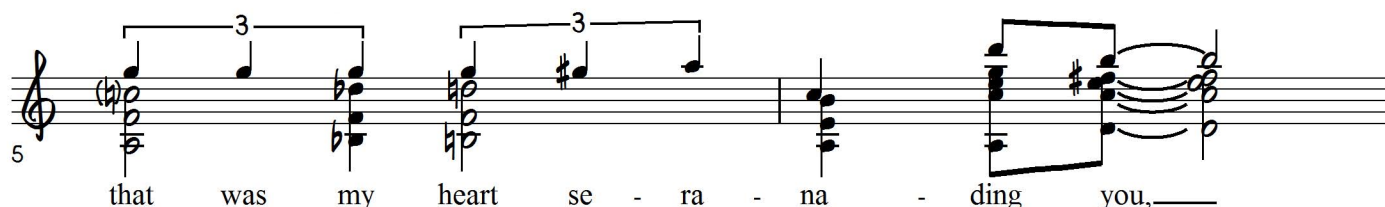


Right hand
roll with B
note third and
D last.

OPT. FILL



OPT. FILL



Prelude to a Kiss - Ted Greene Arrangement - Key of C (p.2)

use harp-harmonics trailing the melody notes.

Handwritten guitar chords for the first system:

- D ϕ 7
- D ϕ 7(9)
- G13b9
- C6/9
- A7b9b5

Musical notation for the first system (measures 7-11):

7 my pre lude to a kiss.

2ND VERSE

Handwritten guitar chords for the second system:

- D13
- A ϕ 13
- G13
- D ϕ 9
- C13sus2
- F#7#9
- F#7/6
- OPEN F#7

Musical notation for the second system (measures 9-13):

9 2. If you hear a song that grows from my
3. how my love song gent - ly cries for the

Handwritten guitar chords for the third system:

- B13
- B7b9+
- OPEN F13sus2
- E7b9+
- A11
- A7b9+
- D ϕ b

Musical notation for the third system (measures 11-15):

11 ten - der sen - ti men - tal woes, my
ten - der - ness with in your eyes,

To Coda

Prelude to a Kiss - Ted Greene Arrangement - Key of C (p. 3)

Phrase this passage!

opt. pause

Handwritten notes: *4ths*, *Dm7/11*, *C#m7/11*, *G9+*, *open*, *Am/9*, *Am11*, *D7#11*, *opt. fill*

13 that was my heart try - ing to com - pose
love is a pre - lude that nev - er dies,

Dm stuff

Handwritten notes: *5*, *quietly*, *Dm stuff*, *7b11*, *6*, *vibrato*, *G13*, *3*, *1*, *Ab*, *C*, *3*, *C#B*, *2*, *3/A*, *opt.*

15 a pre - lude to a kiss.
a pre - lude to a kiss.

BRIDGE

Handwritten notes: *E A7*, *open*, *E/9#11*, *5*, *E A7*, *C#m9*, *F#m7/11*, *Am6*, *3 9*, *slide 1st finger*

17 Though it's just a sim - ple me - lo - dy with

Prelude to a Kiss - Ted Greene Arrangement - Key of C (p.4)

Hit the bass note
before the beat.

Handwritten guitar chord diagrams and musical notation for measures 19-20.

Measures 19-20: no - thing fan - cy, no - thing much,

Chord diagrams above the staff include: F#A9, open E m6b9A7, A9, F#m7b9 sus 4, F#m7b9, and F#A7. An "opt. Fill" is indicated for the final measure.

or use
Am7 to m6

Handwritten guitar chord diagrams and musical notation for measures 21-22.

Measures 21-22: you could turn it to a sym - pho - ny, a

Chord diagrams above the staff include: open E2, B7 sus add A7, open E A7, E A7/6, open A m7b9, A7#9(b9), C, and an optional (opt.) diagram. Notes (b) are marked in the notation.

or use A7
and add F

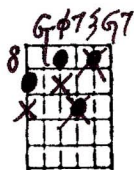
Handwritten guitar chord diagrams and musical notation for measures 23-24.

Measures 23-24: Schu - bert tune with a Gersh - win touch. 3. Oh,

Chord diagrams above the staff include: open B m7/11 E, E7/6, open A m7/11, A9, D m7/11, F#m7b9, E m7/11, and an optional (opt.) A7b9 diagram. A note "or open tie" is written below the A9 diagram.

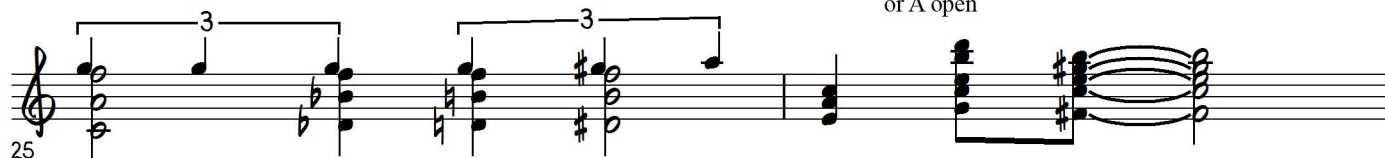
D.S. al Coda

⊕ CODA

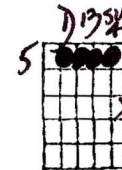
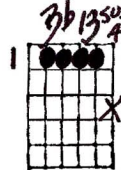
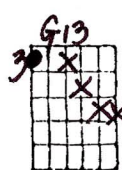


OPT. Fill

or A open



that was my heart try - ing to com - pose_____



to key of B or ?

embellish and pause before

likewise



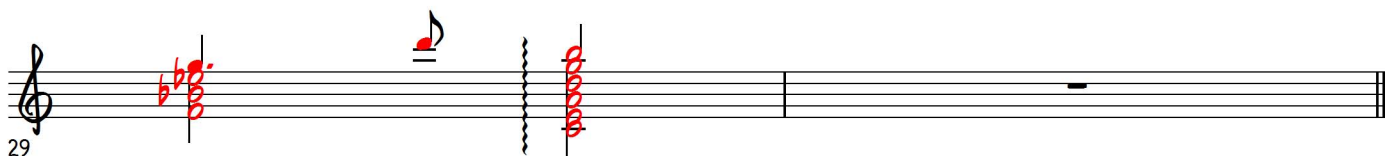
Suggested ending
for key of C:



embellish and pause before



add harmonics....



4-28-14-85
Jed Thomas

to
hang
on
?