

BLUESETTE

Playing order: ● × □ △
○ = opt.

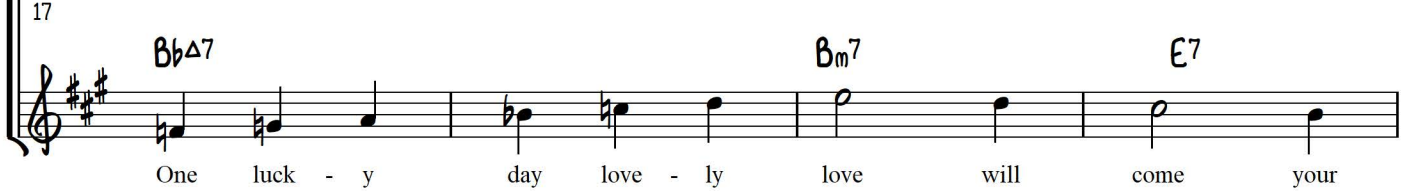
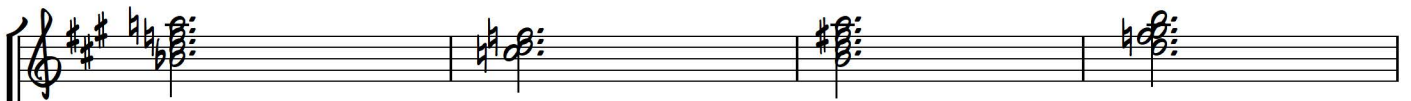
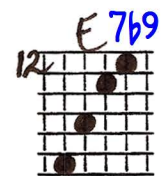
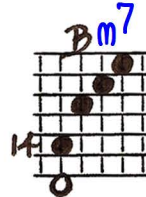
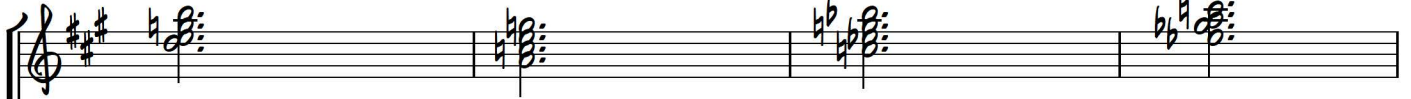
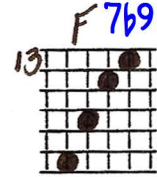
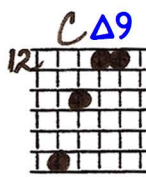
V-1 Comping, Middle Strings
Key of A

Feel in 3 or
regular swing

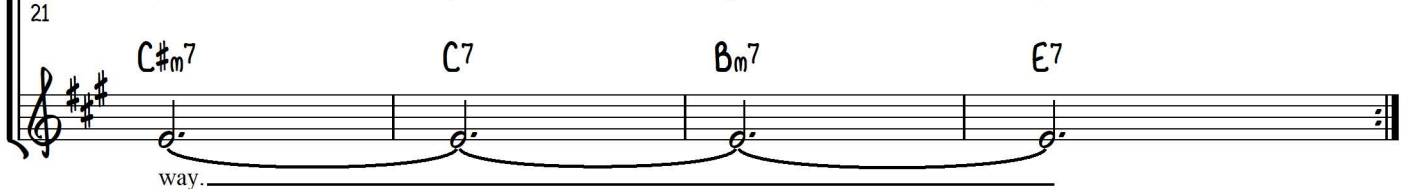
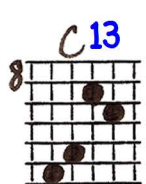
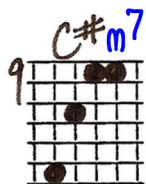
#1

Not indicating a visual root here, but rather a kind of “west boundary line” if one views the fingerboard as set up in a “west to east” manner. This seems easier when making such a large leap from the prior chord.

"Bluesette" - Ted Greene Comping, key of A, V-I voicings, p. 2



Optional: add to get back to the top



MIDDLE STRINGS V-1 Comping on BLUESETTE

© 6-28-89
Jed Blue

Key of A
Feel in
3 or
reg.
swing

12 A 14 A 13 G# 9 C# 9 F# 7 B 7 E 5 A

5 D 14 D 10 D 15 G 12 C 8 C 15 C 13 F

NOT INDICATING A VISUAL ROOT HERE BUT RATHER

A KIND OF 'WEST BOUNDARY LINE' IF ONE VIEWS THE FINGERBOARD as setup

in a 'WEST TO EAST' manner. This seems easier when making such a large leap from the prior chord.

13 Bb 13 Bb 14 B 12 E 9 C# 8 C 8 F 6 Bb

OPTIONAL:
Add 13
to get
back
to the top

Bb 13