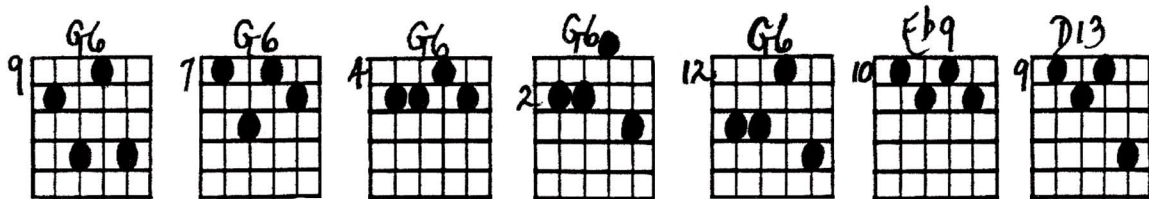
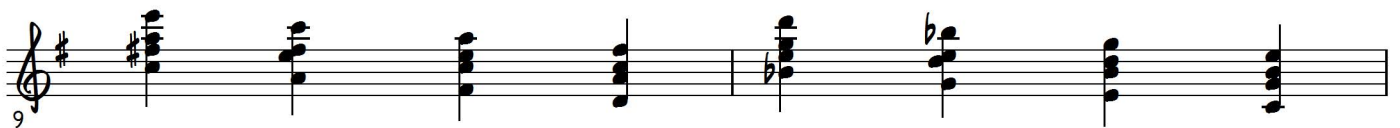
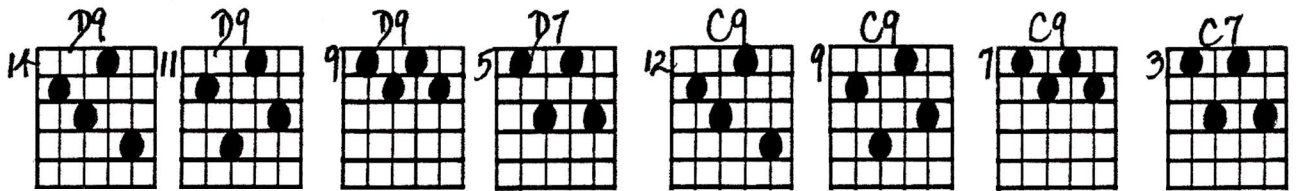
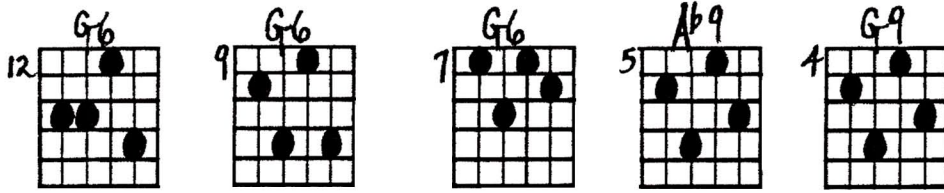


BIG BAND BLUES #2

Middle strings only (key of G)

Ted Greene 1985-06-29 (page 2)



V-2

Middle
& top
strings

BIG BAND BLUES #2

Ted Greene
1985-06-29

3 Statement Form

(key of Ab)

Key of Ab

Ab6 Ab6 Ab6 Ab6 Db7 Db9 Db9 Db9

or on middle set

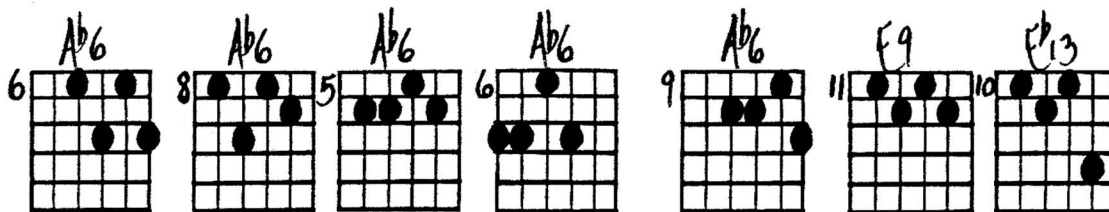
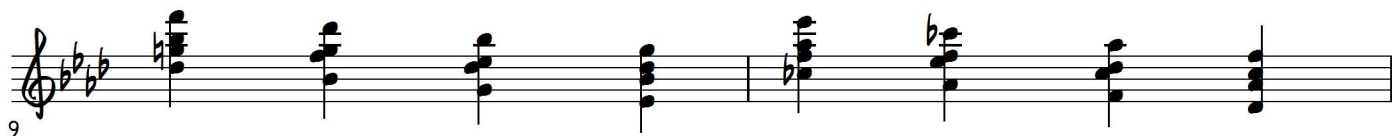
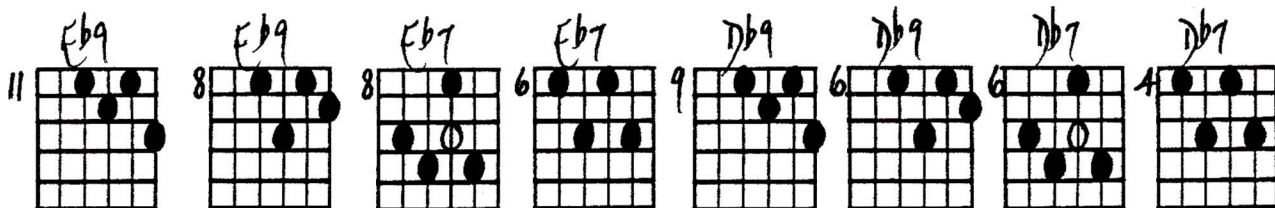
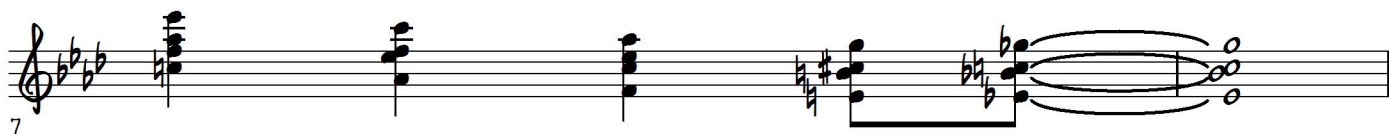
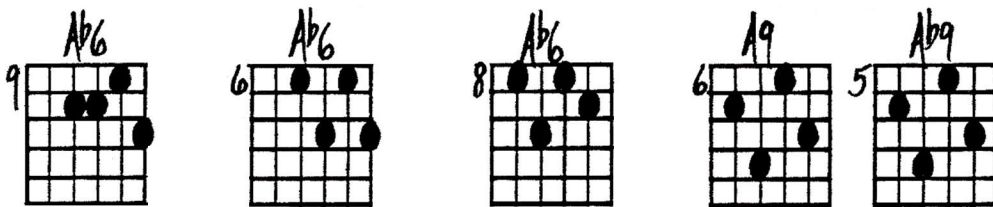
Ab6 Ab6 Ab6 A9 Ab9 opt. Db9#11

Db7 Db9 Db7 Db9 Db7 Db9 Db9 Db9

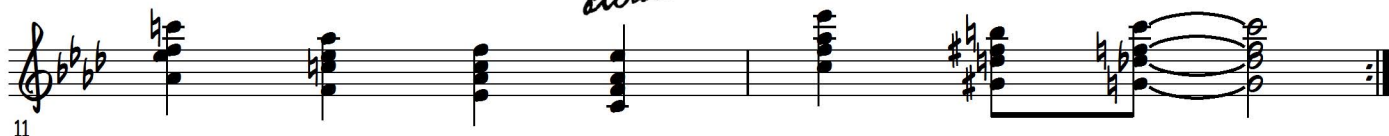
BIG BAND BLUES #2

Middle & top strings (key of Ab)

Ted Greene 1985-06-29 (page 2)



coming attraction



MIDDLE STRINGS ONLY

Key of G

Diagram showing guitar fretboard positions for various chords across six rows. Each row contains eight fretboard diagrams with chord names and fret numbers indicated above them.

Row 1: G6 (9, 12), G6 (9, 12), G6 (9, 7), G6 (9, 7), C7 (9, 12), C9 (9, 7), C9 (9, 7), C9 (9, 7)

Row 2: G6 (9, 12), G6 (9, 12), G6 (9, 8), Ab9 (8, 7), G9 (7, 8), G9 (7, 8), G9 (7, 8), G7b9#5 (8, 8)

Row 3: C7 (9, 12), C9 (9, 12), C7 (9, 7), C9 (9, 7), C7 (15, 12), C9 (15, 12), C9 (9, 7), C9 (9, 7)

Row 4: G6 (12, 9), G6 (9, 7), G6 (9, 7), Ab9 (5, 8), G9 (4, 8), G9 (4, 8), G9 (4, 8), G9 (4, 8)

Row 5: D9 (14, 11), D9 (11, 9), D9 (9, 5), D7 (5, 12), C9 (12, 9), C9 (9, 7), C9 (9, 7), C7 (3, 7)

Row 6: G6 (9, 7), G6 (7, 4), G6 (4, 2), G6 (2, 12), G6 (12, 10), Eb9 (10, 9), D13 (9, 7)

Additional annotations: A circled '0' is present in the third diagram of Row 3. The sequence '1324' is written below the fifth diagram of Row 3.

V-2

MIDDLE & TOP STRINGS

BIG BAND BLUES #2 - 3 STATEMENT FORM

© 6-27-85
J. Williams

Key of Ab

Ab6 Ab6 Ab6 Ab6 Db7 Db9 Db9 Db9

Ab6 Ab6 Ab6 A9 Ab9 opt. D|9#11 (maj3)

Db7 Db9 Db7 Db9 Db7 Db9 Db9 Db9

Ab6 Ab6 Ab6 A9 Ab9

Fb9 Fb9 Fb7 Fb7 Db9 Db9 Db7 Db7

Ab6 Ab6 Ab6 Ab6 Ab6 F9 Fb13