

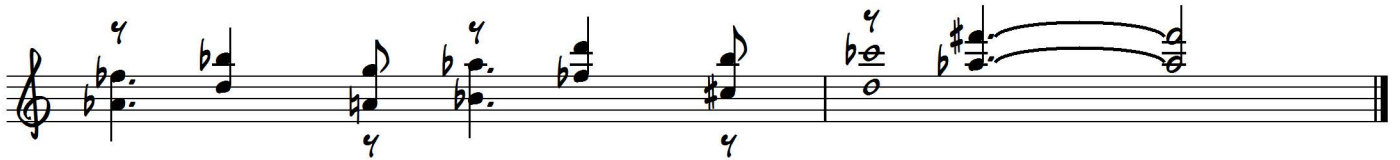
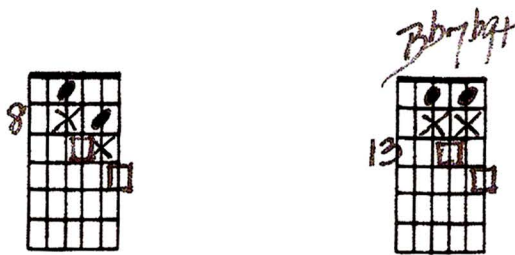
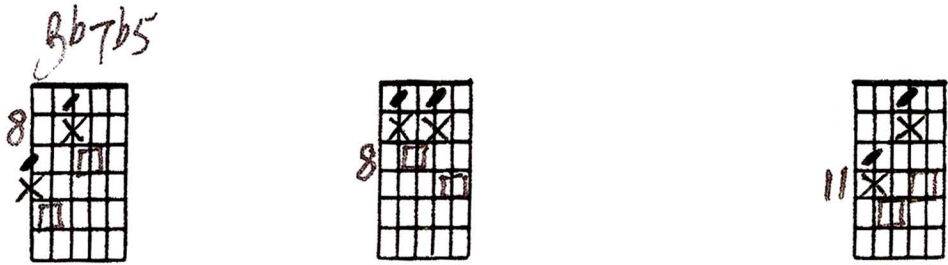
Geroge Van Eps-ish Counterpoint

Ted Greene
1990-08-22

With 1/2 Step Approach

Playing order: ● × □ △
○ = opt.

Medium
Swing



med. Swing
GIVE-ish Counterpoint (w/ 1/2 step appr.)
Bb7b5
and one

504 A.M.
8-22-90

