

Move melodies up
8va for guitar

BUT NOT FOR ME

by George Gershwin

Ted Greene lead sheet & arrangement outline, 1977-05-04

Substitute chords: Bb^{13} $Eb\Delta^7$ Cm^7 Fm^7 Bb^{13}
 Original chords: Bb^7 Eb Bb^7 Eb Bb^7 Eb^6 Bb^7 Eb Bb^7

They're writ - ing songs of love but not for
 I was a fool to fall and get that

or $Eb/9$
 $Eb\Delta^7$ Bb^6/D $Cm^7/11$ Eb/Bb F^9/A $Cm^7/11/G$

me. way, A Heigh - luc - ky star's a - bove
 Ho, ho, a - las and al -

F^7 Bb^{13} Bb^7b^9/D $Eb\Delta^7$ Cm^7 Bbm^7 Eb^7 Bbm^7/F Eb^7/G
 Bb^7 Fm^7 $Bb^7/6$ Eb^9 Eb^7 or $Bbm^7/11$

- - but not for me. With love to
 so lack - a - day. Al - though I

or Db^{13}
 $Ab^7\#9$ Abm^9 Db^9 Abm^6/Cb $Eb/\#11/Bb$ $G^7\#9b^9+/B$ Cm
 Eb^+ Ab Fm^7 Cm Fm^7 $F\#0$ Eb Cm

lead can't the way, I've found more clouds of gray,
 dis - miss the mem - 'ry

Cm Cm7/11 Cm7 Gb9 F9 (stretch) Cm7 F9 Cb7/6 Bb7SUS
 Cm Bb7 Eb Eb+ Fm7 Fm6 F7b5



than an - y Rus - sian play could guar - an - tee.

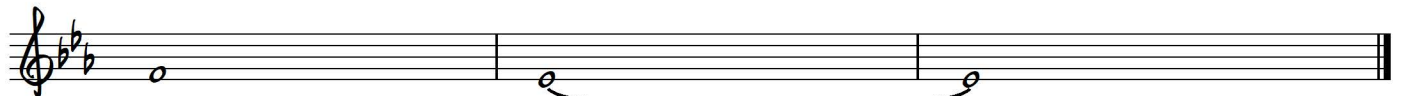
D.C. al Coda

or Cm7/13
 Eb/#11/Bb Cm7 F13/A F#13 F9 Cb7/6SUS Fm9/C
 F#0 Eb G9 Cm C7+ Fm9



of her kiss I guess she's not

or Bb9
 Bb7SUS Bb7 Eb6
 Bb7 Eb



for me.

MOVE MELODIES UP
8VA FOR GUITAR

5-4-77
m. @ J. F. ...

BUT NOT FOR ME - GEORGE GERSHWIN

SUBSTITUTE CHORDS →

ORIGINAL CHORDS →

Chord annotations for the first staff:

- Substitute: Bb13 Eb7 Cm7 Fm7 Bb13 Eb7 or F9 Bb7 Cm7/11 Eb/Bb F9 A Cm7/11 F7 Fm7 Bb13 Bb7b9 Bb7/6 Eb7 Cm7 Bb7 Eb7 Fm7/11 Eb7 Fm7/11 Eb7 Ab7#9 Abm9 or Bb13
- Original: Bb7 Eb Bb7 Eb Bb7 Eb Bb7 Eb Bb7 Eb Bb7 Eb Bb7 F7 Bb7 Eb9 Eb7 Eb7 Eb7 Ab

Chord annotations for the second staff:

- Substitute: Db9 Abmb/cb Eb/11 Bb F#9b9+ Cm7/11 Cm7 Gb9 F9 (STRETCH) Cm7 F9 cb7/6 Bb7sus Eb/11 or Cm7/13 Cm7 F13 A F#13 F9 cb7/6sus Fm9/c Bb7sus,7 Eb6
- Original: Fm7 Cm Fm7 F#0 Eb Cm Bb7 Eb Eb7 Fm7 Fm6 F7-5 F#0 Eb G9 Cm C7+ Fm9 Bb7 Eb

D.C. al coda