

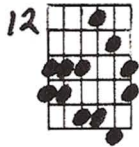
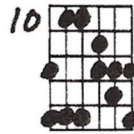
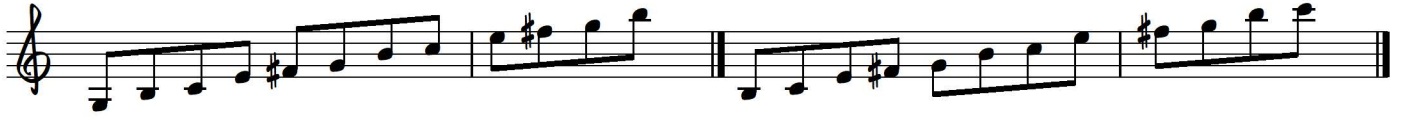
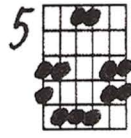
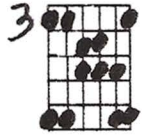
# JAPANESE SCALE

Ted Greene  
1978-11-10

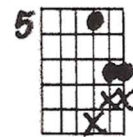
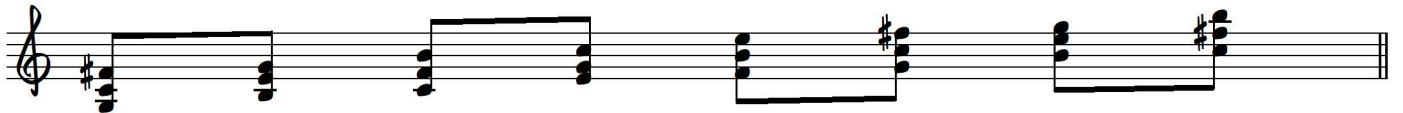
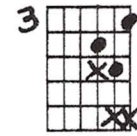
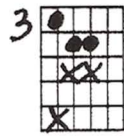
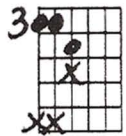
(Key of Em: 1, 2, b3, 5, b6. Key of C: 1, 3, #4, 5, 7)

"2 notes per string"

Scale Fingerings



3-Note Chords - all based on 5-R-b3 in Em



"Japanese Scale" -- Ted Greene, p.2

Three rows of guitar chord diagrams and musical notation for the Japanese Scale. Each row shows four chord diagrams with their corresponding musical notation on a treble clef staff. The first row uses 8th fret diagrams, the second row uses 10th fret diagrams, and the third row uses 12th fret diagrams. The musical notation shows the scale notes and chord changes.

[3-Note Chords - all based on] R-5-b3 in Em

Two rows of guitar chord diagrams and musical notation for 3-note chords based on R-5-b3 in Em. The first row shows 12 diagrams numbered 1 through 16. The second row shows 8 diagrams, with the 4th diagram circled and labeled with a sigma symbol. The musical notation below each row shows the scale notes and chord changes.

11-10-78

# JAPANESE SCALE

{ Key of E<sup>m</sup> : 1, 2, b3, 5, b6  
 { Key of C : 1, 3, #4, 5, 7

"2 NOTES PER STRING"

SCALE FINGERINGS

3 NOTE CHORDS

all based on 3 in E<sup>m</sup>

3 5 8 10 12 3 3 3 3 5 5 5  
 5 8 8 8 8 10 10 10 10 12 12 12  
 12 1 2 2 2 3 2 4 5 9 10  
 14 16 1 2 2 2 3 2 4 3 5