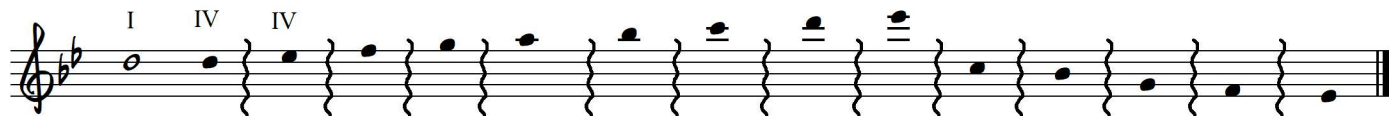


EAR-TRAINING THRU SOPRANO MELODIC MOVES APPLIED TO BASIC PROGRESSIONS

[1-to-1 and others a) where necessary, b) to add variety]

Do Complementary Series from the bass view.

1-to-1 Bb EbΔ7 Eb Eb/9 Eb Eb/#11 Eb Eb6 EbΔ7 Eb Eb6 Eb Eb Eb/9 Eb

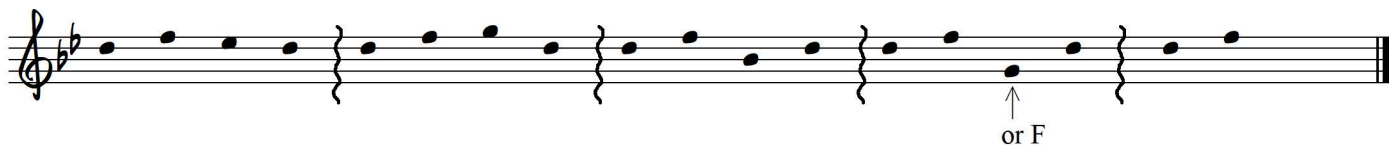
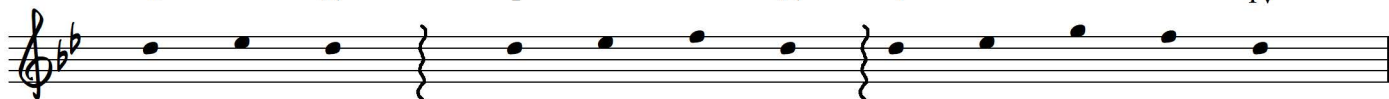


Decoration of Basic Moves

2-to-1 (and 3-to-1 and more)

(More florid than 1-to-1)

Bb Eb Bb Eb Bb Eb
I IV I IV I IV



Include "Chain" examples too. (ex. I - bVII - I - bVII, etc.)

or I7 - V7 - I7 - V7

or V7 - I7 - V7 - I7

FOR NEW SERIES: EAR TRAINING FROM SOPRANO MELODIC MOVES (1 to 2 others) 10-2-87
 DO COMPLEMENTARY SERIES from the BASS VIEW (a) where necessary, b) to add variety)

1 to 2

EX. I III I IV

(MORE FLORID THAN 1-2)
 DECORATION OF BASIC MOVES

* INCLUDE "CHAIN"

EX. 100
 (EX: I bVII I bVI etc)
 or
 I7 V7
 I7 V7
 7

V7 I7
 V7 I7