

BAUBLES, BANGLES, AND BEADS

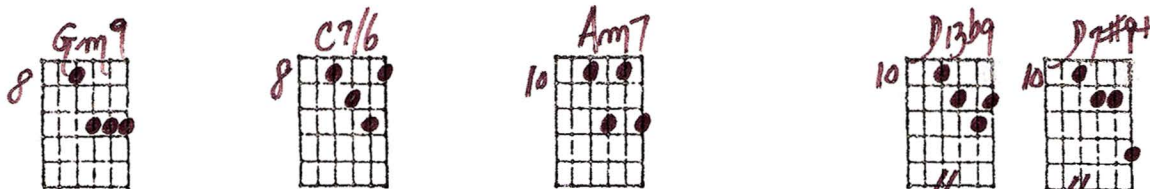
Sparse ("Punctuation") Rhythmic Comping Style

On Top Four Strings

Playing order: ● × □ △
○ = opt.

4/4, Key of F

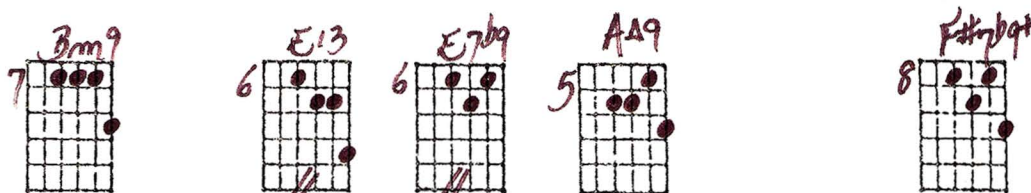
All chords get 4 beats unless noted.



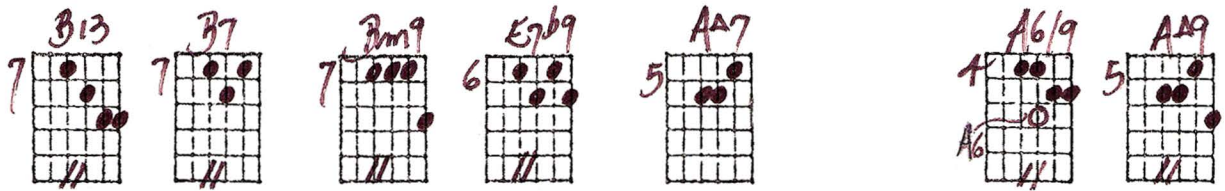
Musical notation for the first system, measures 1-5. The top staff shows chord voicings on the top four strings. The bottom staff shows the melody with lyrics: "Bau - bles, ban - gles, hear how they jing, jing - a - ling - a,"



Musical notation for the second system, measures 6-10. The top staff shows chord voicings on the top four strings. The bottom staff shows the melody with lyrics: "bau - bles, ban - gles bright shin - y beads. _____"



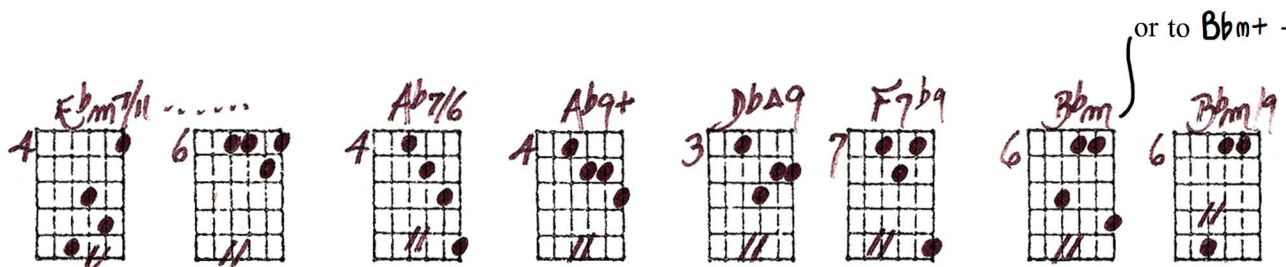
Musical notation for the third system, measures 11-15. The top staff shows chord voicings on the top four strings. The bottom staff shows the melody with lyrics: "Spar - kles, span - gles, my heart will sing, sing - a - ling - a,"



13

Bm7 E9 AΔ7 A6

wear - ing bau - bles, ban - gles and beads.

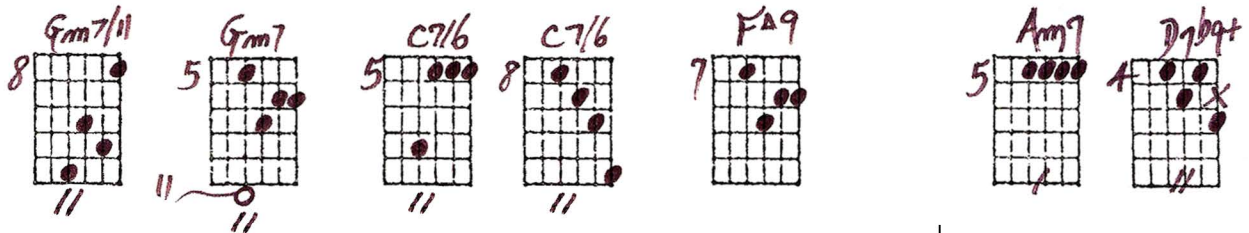


or to Bbm+ - Gm7/11/3

17

Ebm7 Ab7 DbΔ9

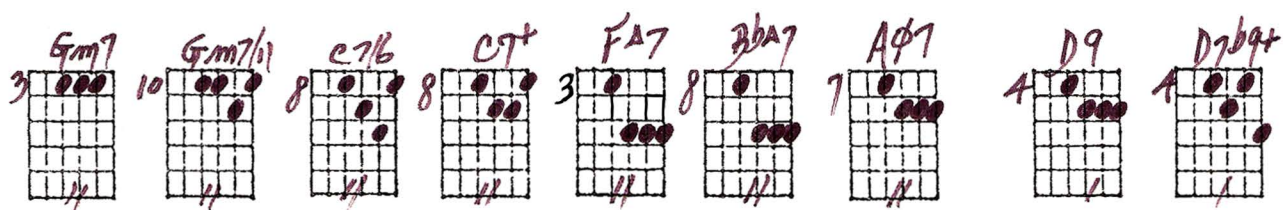
I'll glit - ter and gleam so,



21

Gb7 C7 FΔ7 F Abm7

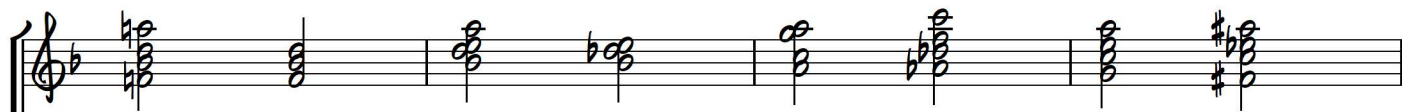
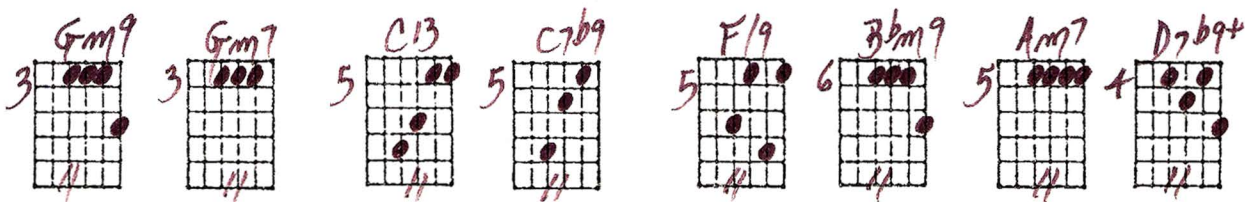
make some - bo - dy dream so that



25



some - day he may buy me a ring, ring - a - ling - a,

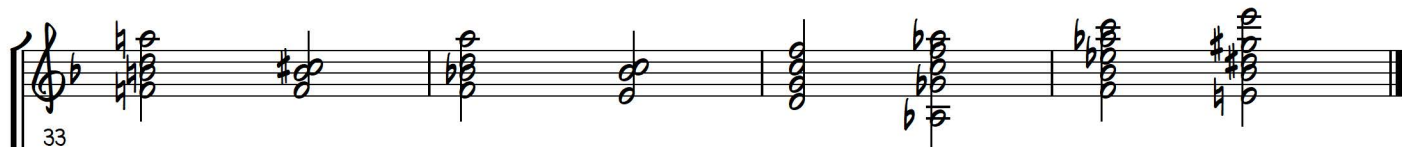
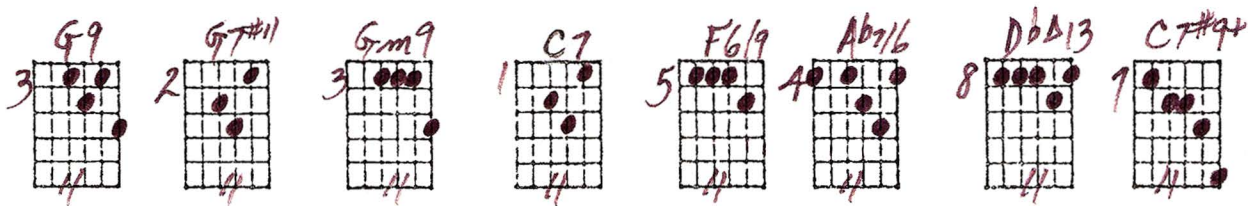


29

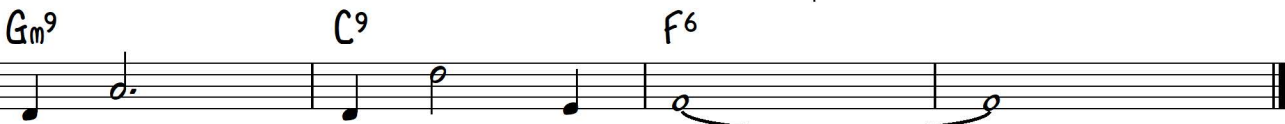


I've heard _____ that's where it leads, _____ wear - ing

Turnaround



33



bau - bles, _____ ban - gles _____ and beads. _____

BRUBLES, BANGLES & BEADS - SPARSE RHYTHMIC COMPING STYLE ON TOP 4 STRINGS
 ("PUNCTUATION")

8-31-79
 © Ted Greene

4/4
 Key
 F

ALL CHORDS
 GUY & BEATS
 UNLESS
 NOTED
 (//)

8	Gm9	8	C7/6	10	Am7	10	D13b9	10	D7#9+	8	Gm9	8	C7+	7	F6/9	6	F6	7	Bm9
6	E13	6	E7b9	5	AΔ9	8	F#7b9+	7	B13	7	B7	7	Bm9	6	E7b9	5	AΔ7	4	A6/9
5	AΔ9	4	Ebm7//	6	4	Ab7/6	4	Ab9+	3	DΔ9	7	F7b9	6	Bbm	6	Bbm9	8	Gm7//
5	Gm7	5	C7/6	8	C7/6	7	FΔ9			5	Am7	3	D7b9+	3	Gm7	10	Gm7//	8	C7/6
8	C7+	3	FΔ7	8	BΔ7	7	Aφ7	4	D9	4	D7b9+	3	Gm9	3	Gm7	5	C13	5	C7b9
5	F/9	6	Bbm9	5	Am7	4	B7b9+	3	G9	2	G7#11	3	Gm9	1	C7	5	F6/9	4	Ab7/6
8	DΔ13	7	C7#9+																

or to Bbm7 Gm7//1/2

TURNAROUND