

Voicing Centers

Applied to Common Progressions

Playing order: ● × □ △
○ = opt.

1)

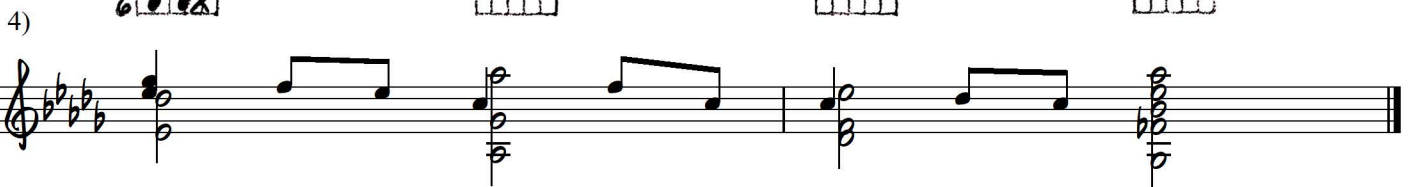
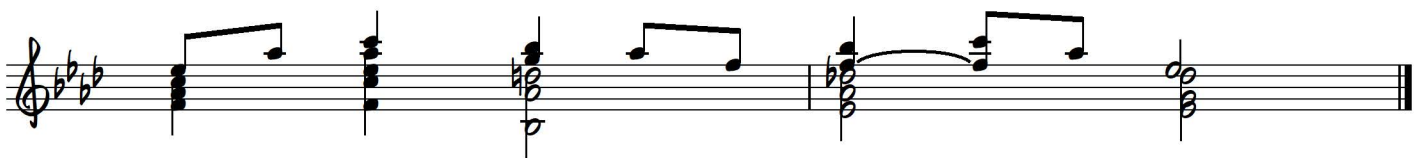
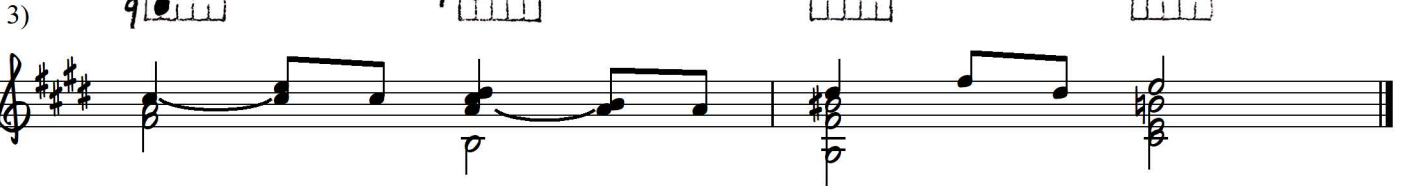
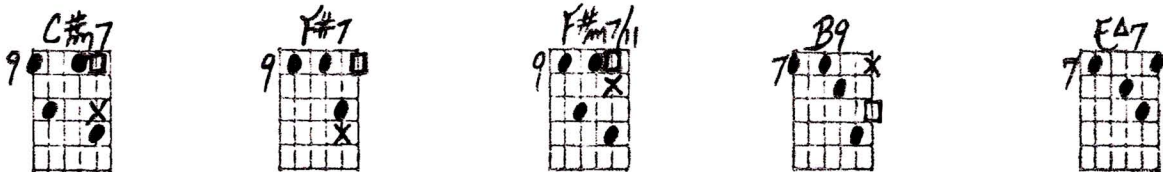
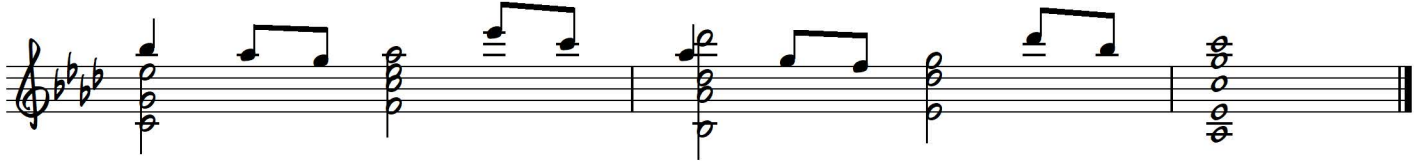
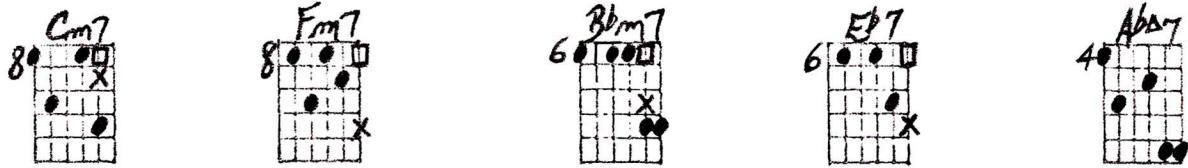
Am7, D7b9, GΔ7, Bm7, E7b9+, Am9, D7b9+, GΔ9

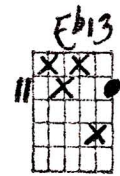
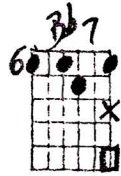
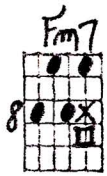
Cm7, F9, B9, Bb11

2)

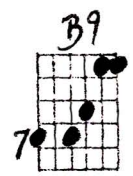
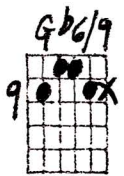
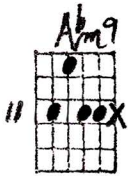
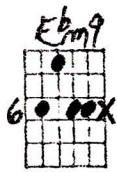
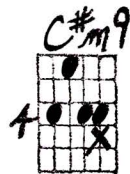
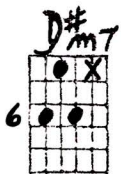
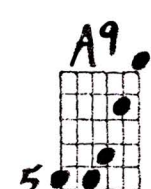
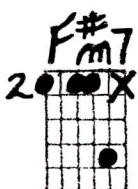
Abm7, Db7, GbΔ7, Eb7#9, Ab13

Cm7, F7+, Dm7, } BbA9





5)

VOICING CENTERS : APPLIED TO COMMON PROGRESSIONS

8-10-77
 © Ted Greene

PLAY X AFTER ○
 PLAY □ AFTER X

①

Am7	D7b9	GΔ7	Bm7	E7b9+	Am9	D7b9+	GΔ9	Cm7	F9
B9	F#11	A7m7	D♭7	G♭Δ7	E♭7#9	A♭13	Cm7	F7+	Dm7(b9)
Cm7	Fm7	Bbm7	E♭7	A♭Δ7	C#m7	F#7	F#m7(b9)	B9	EΔ7
F#m7	B9	G#7	C#m7	Fm7	Fm7	B♭7/6	F#m7(b9)	E♭7	
E♭m7	A♭7/6	D♭Δ9	G♭13	Fm7	B♭7	Bm7(b9)	E♭13	A♭m9	D♭7+
G♭6/9	B9	E♭m9	A♭7/6	A♭m7(b9)	D♭7	F#m7	G#7	C#m9	F#7
F#m7	B7	EΔ9	A9						

②

③

④

⑤

⑥

⑦

⑧

⑨

⑩

⑪

⑫

⑬

⑭

⑮

⑯

⑰

⑱

⑲

⑳

㉑

㉒

㉓

㉔

㉕

㉖

㉗

㉘

㉙

㉚

㉛

㉜

㉝

㉞

㉟

㊱

㊲

㊳

㊴

㊵

㊶

㊷

㊸

㊹

㊺

㊻

㊼

㊽

㊾

㊿