

# Using Melodic Patterns for Intros, Interludes, and Endings

8<sup>va</sup>-----

15 *Bb/9* 13 *Cm7/11* 13 *BbΔ7* 10 *Am7/11* 8 *Cm7/11* 8 *BbΔ7* 6 *Eb/9* 4 *Db* *F7/6*

2 1 1 3 4

Key of Bb

1) 8<sup>va</sup>-----

16 *C#m7+* 14 *Bm7/11* 12 *AΔ7* 11 *G#m7/11* 7 *Bm7/11* 6 *AΔ7* 5 *Bm7/11/E* 5 *E7/6*

open

Key of A

2) 8<sup>va</sup>-----

13 *EbADD11* 11 *Bbm7/11* 10 *Cm7/11* 8 *AbΔ7* 8 *Bbm/9* 6 *Fm7/11* 6 *Ab/9* 6 *Bb9* 4 *Db/9* 4 *Eb7*

release for 6th string X

Key of Ab

3) 8<sup>va</sup>-----

16 *Eb* 14 *Db/9* 13 *Cm* 11 *Bbm/9* 9 *Ab/9* 8 *E7+* 11 *Bbm7/11* 11 *Eb7*

or on the 2nd string

1 1 2 4 3

4) 8<sup>va</sup>-----

Key of E

5)

Release something to get this.

To iii or ?

6)

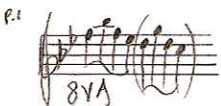
Key of E with modulations

7)

Likewise Key of Eb

8)

Or after 19th fret chime, and maybe the Gbmaj7 on the next lowest set (use string transference if doing this).



# USING MELODIC PATTERNS FOR INTROS, INTERLUDES + ENDINGS

© 1-4-87  
Jed Johnson

① Key of Bb

Bb/9

② Key of A

C#m7+

③ Key of Ab

Fb add11

④

⑤ Key of E

⑥

⑦ Key of E w/ modifications

⑧ likewise Key of Eb