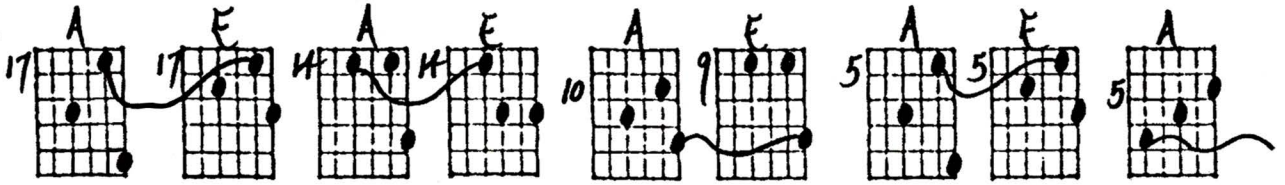


IV - I in Open Triads - Descending Chains

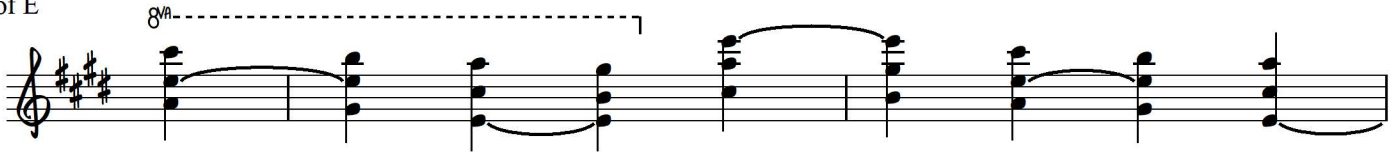
Ted Greene
1984-10-31

with voice-leading

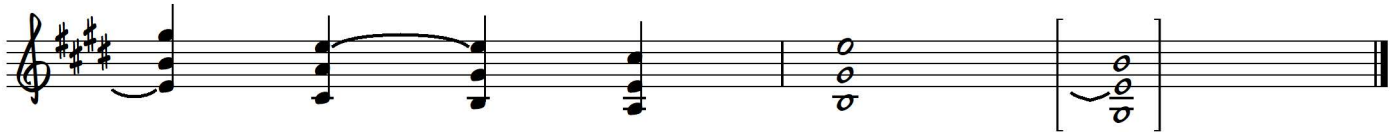
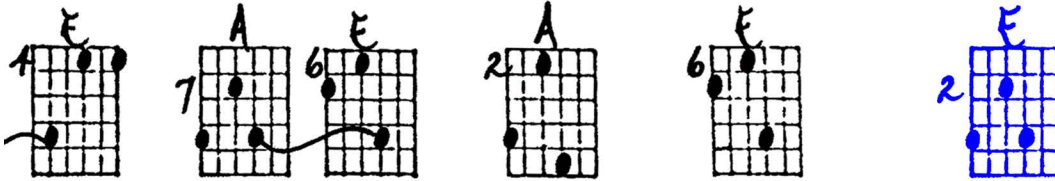
Pick-up
chord:



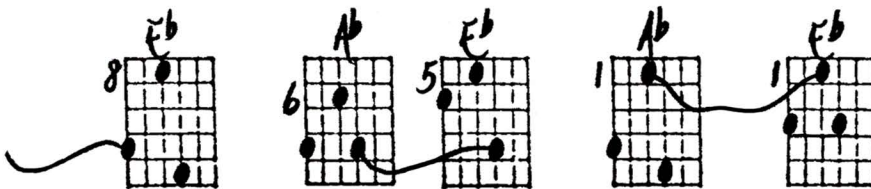
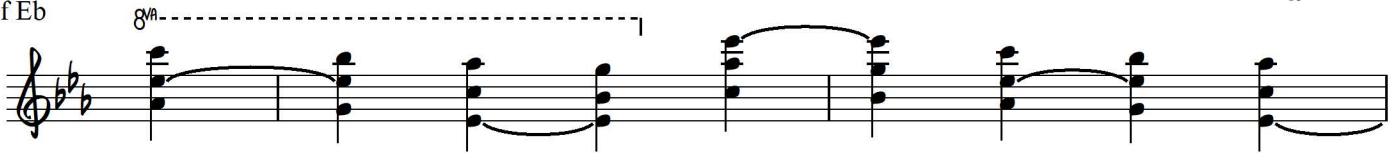
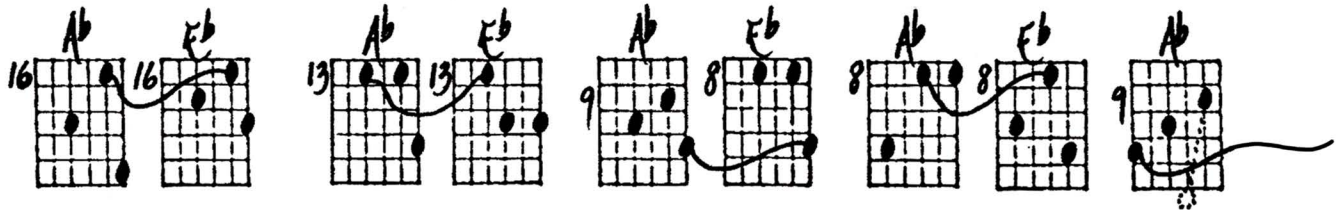
Key of E



or with
voice-leading:



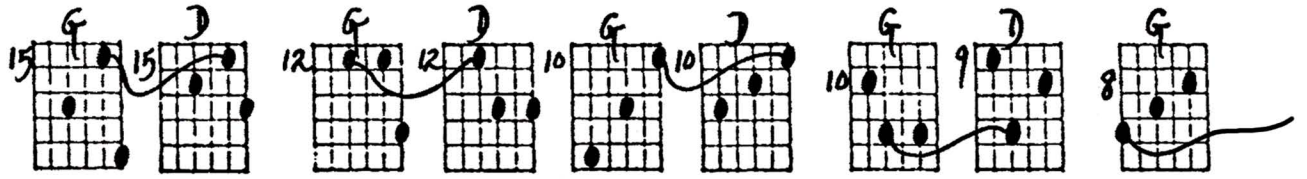
Key of Eb



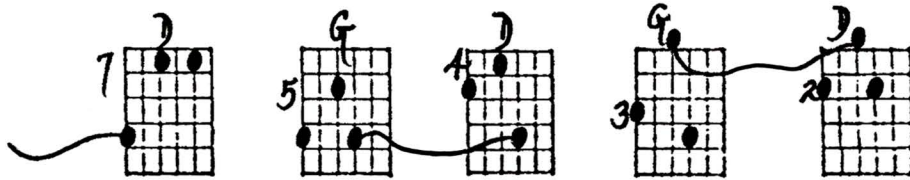
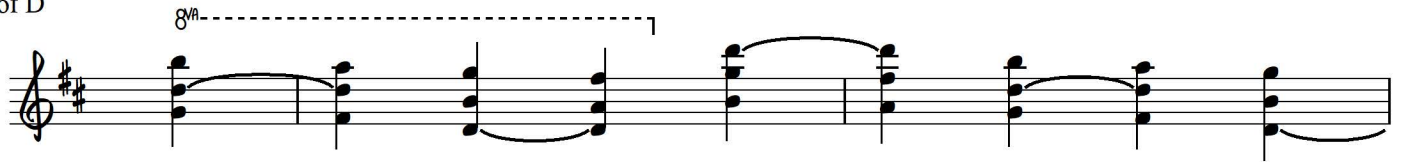
or use alternate
voice-leading



"IV - I in Open Triads - Descending Chains" - Ted Greene, p.2



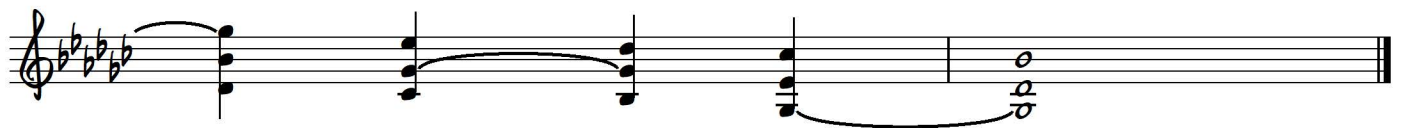
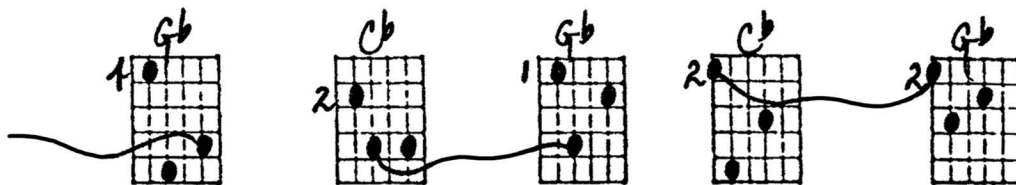
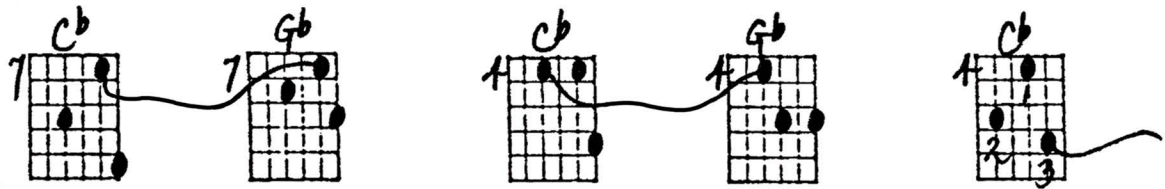
Key of D



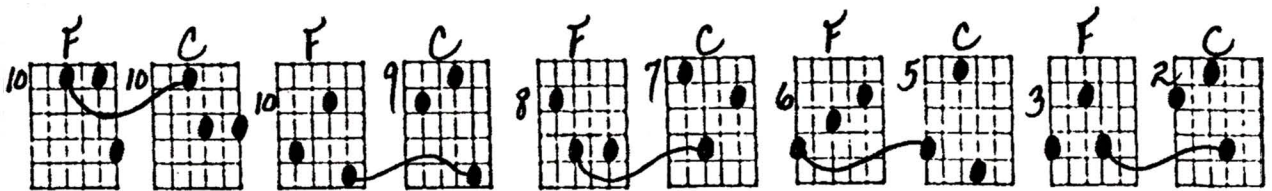
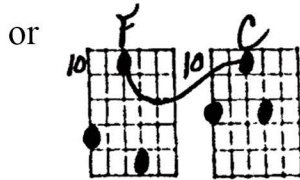
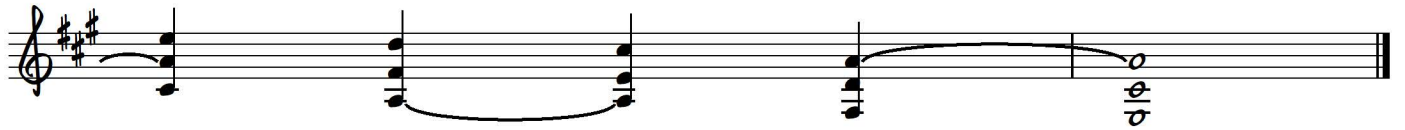
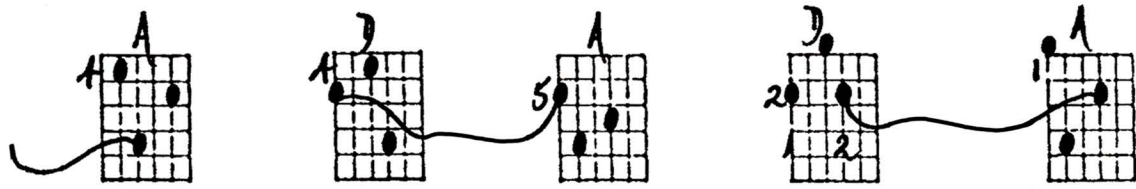
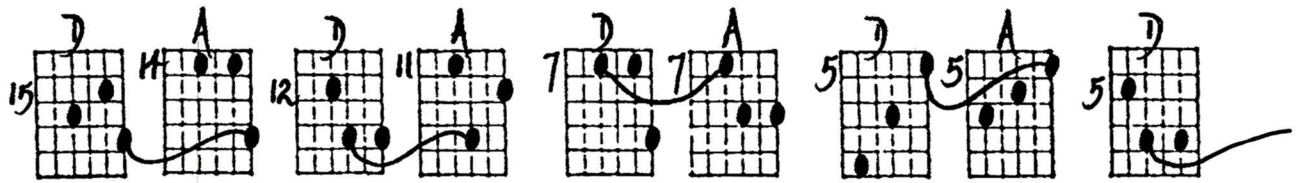
or use alternate voice-leading



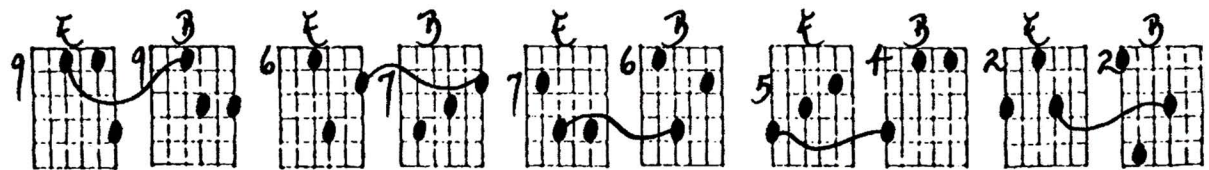
Key of Gb



"IV - I in Open Triads - Descending Chains" - Ted Greene, p. 3



Key of C



Key of B



IV I in OPEN TRIADS - DESC. CHAINS

w/ V.L.

10-31-84
© J. Williams

The diagram consists of a grid of guitar fretboard diagrams, each representing a descending triad chain. The chords and their corresponding fret numbers are as follows:

- Row 1: A (17), E (17), A (14), E (14), A (10), E (9), A (5), E (5), A (5), E (4)
- Row 2: A (7), E (6), A (2), E (6), Ab (16), Eb (16), Ab (13), Eb (13), Ab (9), Eb (8)
- Row 3: Ab (8), Eb (8), Ab (9), Eb (8), Ab (6), Eb (5), Ab (1), Eb (1), G (15), D (15)
- Row 4: G (12), D (12), G (10), D (10), G (10), D (9), G (8), D (7), G (5), D (4)
- Row 5: G (3), D (2), Cb (7), Gb (7), Cb (4), Gb (4), Cb (4), Gb (2), Cb (2), Gb (1)
- Row 6: Cb (2), Gb (2), D (15), A (H), D (12), A (11), D (7), A (7), D (5), A (5)
- Row 7: D (5), A (4), D (4), A (5), D (2), A (1), D (1), A (1), F (10), C (10), F (10), C (9)
- Row 8: F (8), C (7), F (6), C (5), F (3), C (2), F (10), C (10)
- Row 9: E (9), B (3), E (6), B (7), E (7), B (6), E (5), B (4), E (2), B (2)

Annotations include:
- "PICKUP CHORD" under the first A triad.
- "V.L." (Vibrato) under several diagrams.
- "also try 3rd string in prior example" with an arrow pointing to the F triad in the 8th row.