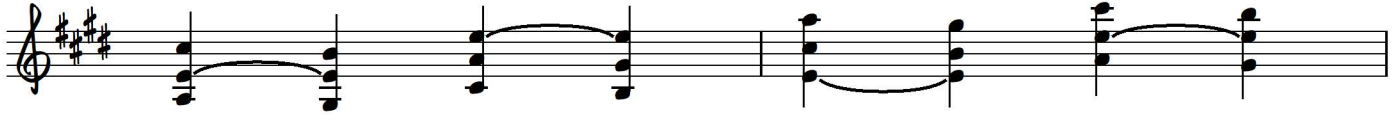
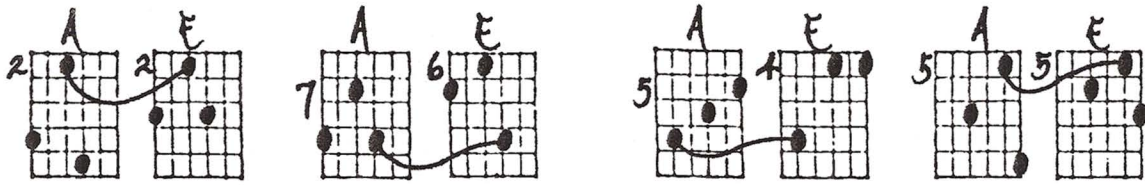


IV - I in Open Triads - Ascending Chains

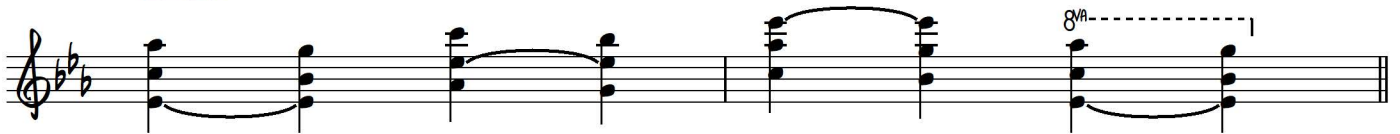
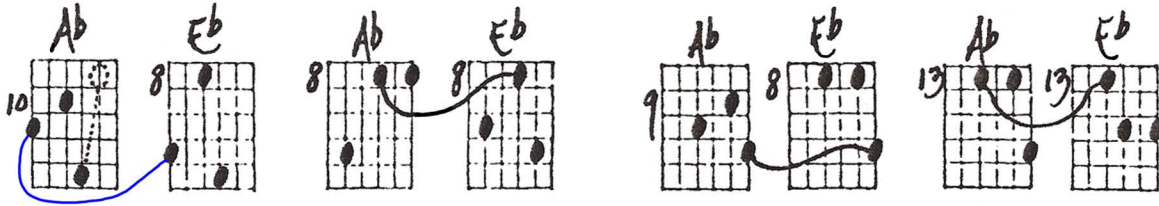
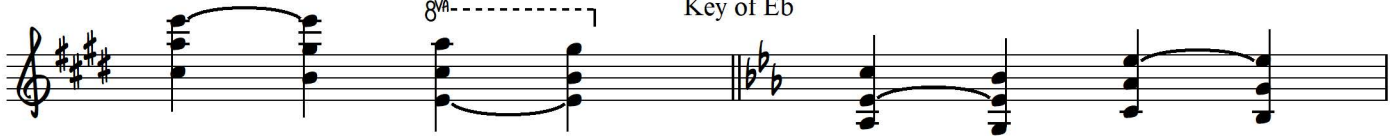
Ted Greene
1984-10-31

with voice-leading

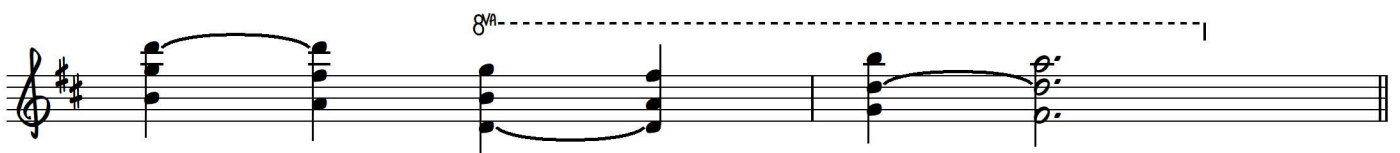
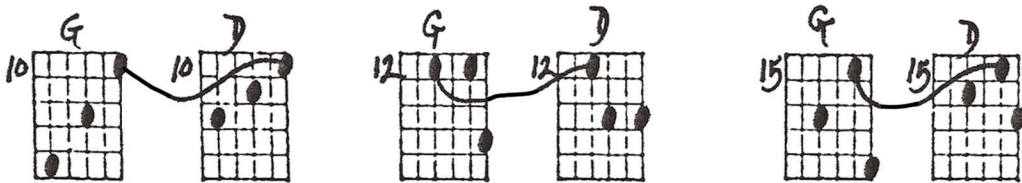
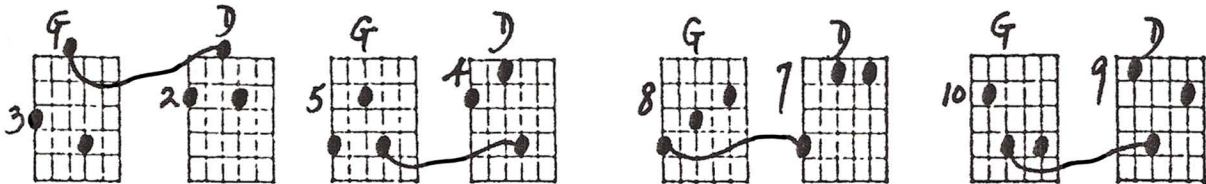
Key of E



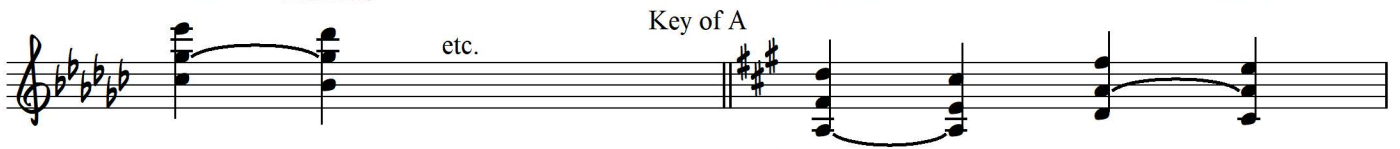
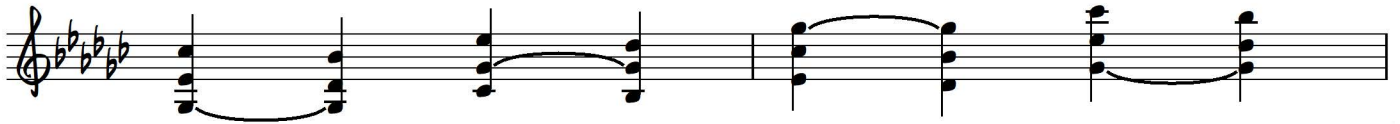
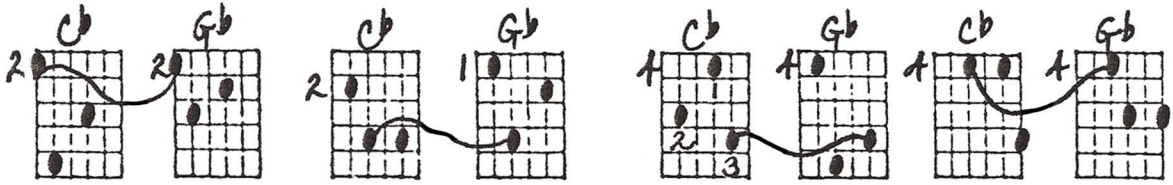
Key of Eb



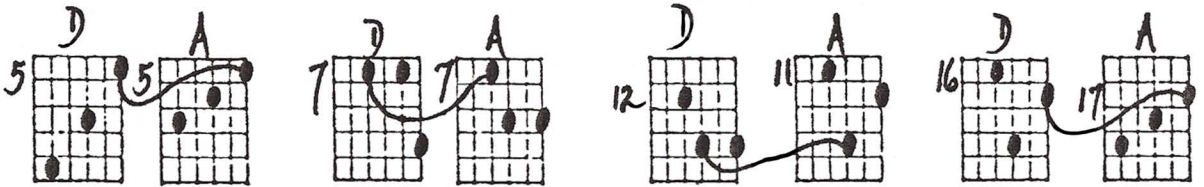
Key of D



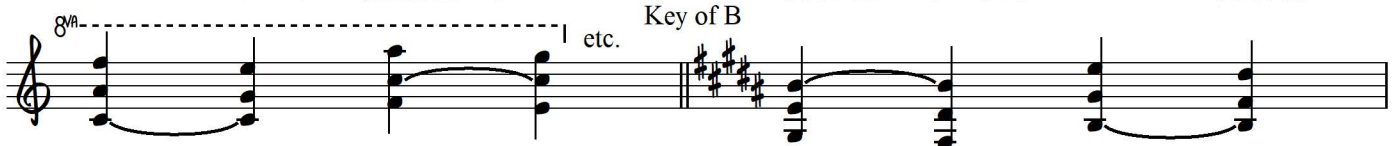
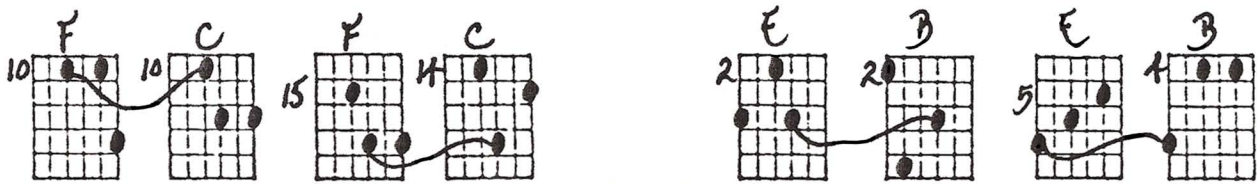
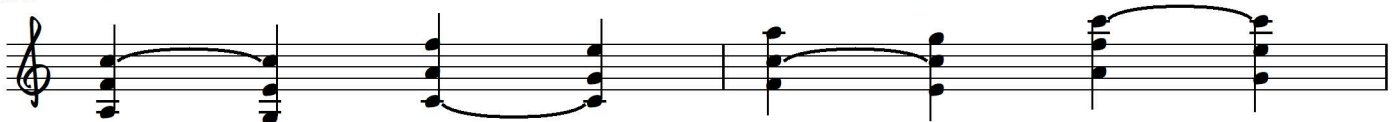
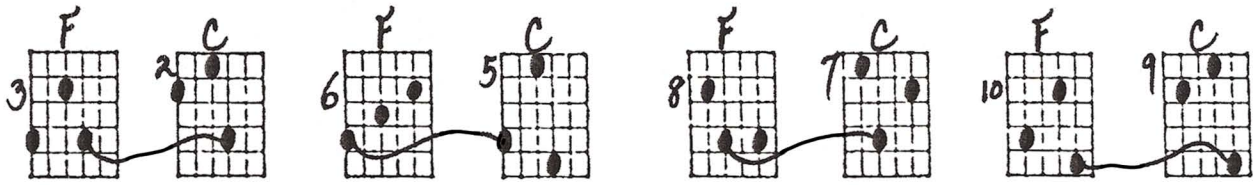
Key of Gb



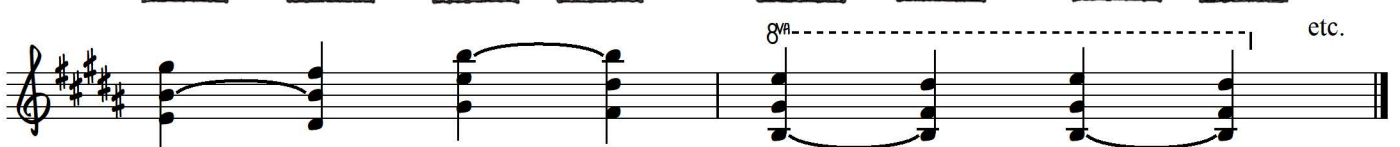
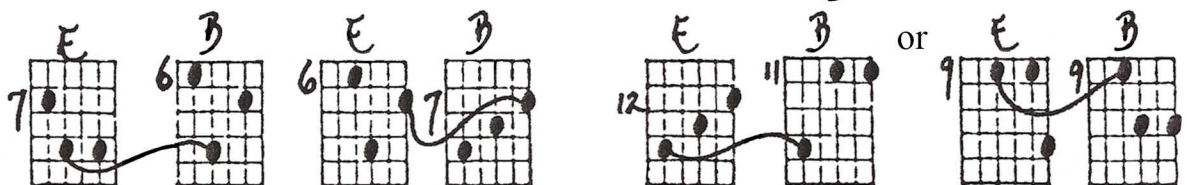
Key of A



Key of C



Key of B



IV-I in OPEN TRIADS - ASC. CHAINS

10-31-84
© J. J. Johnson

The diagram illustrates ascending chains of open triads on the guitar fretboard, organized into a grid. Each cell in the grid contains a fretboard diagram showing a specific triad and an ascending chain of notes or fret numbers. The triads shown are: A, E, Ab, Eb, G, D, Cb, Gb, D, A, F, C, E, and B. The chains are designed to be played in a single position, often using the 2nd, 4th, and 5th strings. The diagrams are numbered from 2 to 17, with some numbers appearing in multiple locations. The chains are designed to be played in a single position, often using the 2nd, 4th, and 5th strings. The diagrams are arranged in a grid that is 10 columns wide and 10 rows high, with the last row containing empty grids for the last four columns.