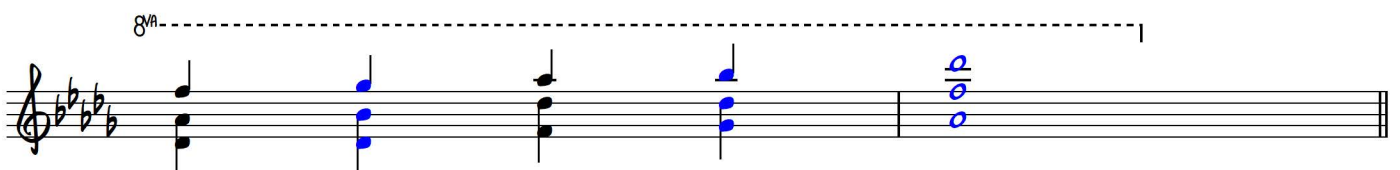
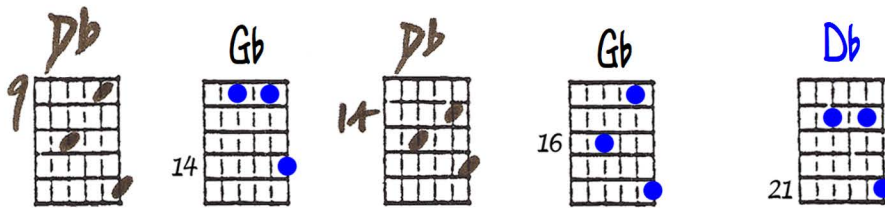
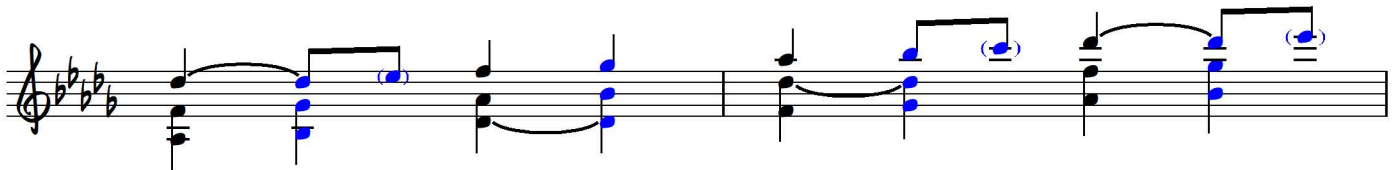
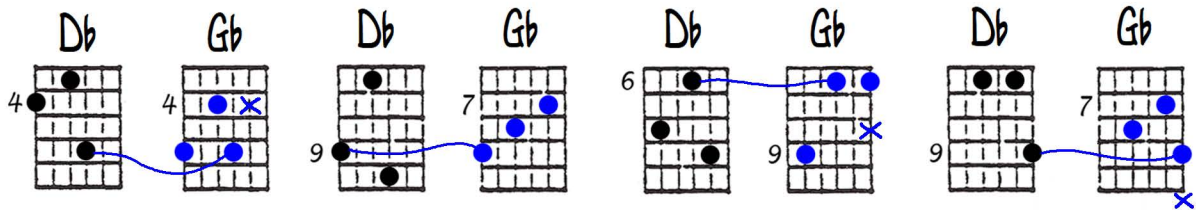
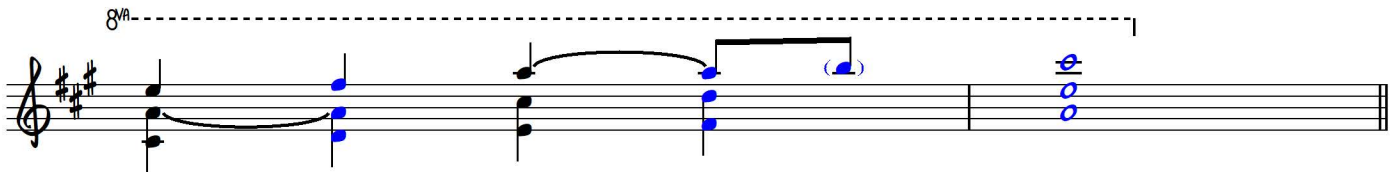
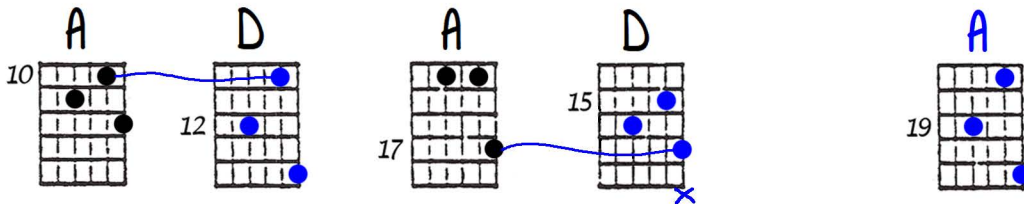
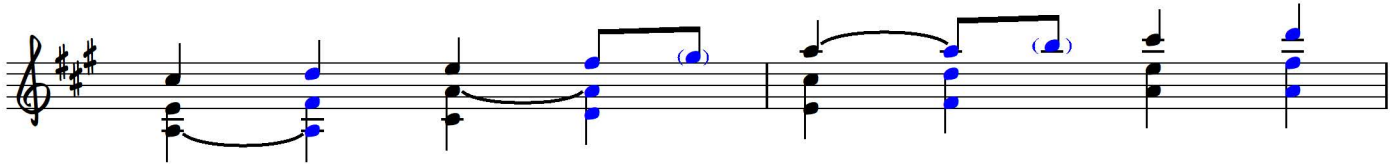
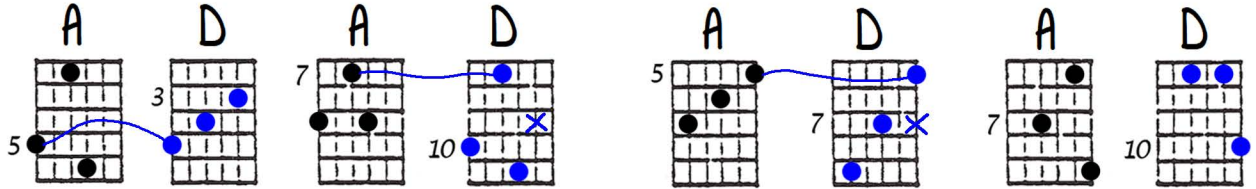


I-IV and i-IV with Open Triads

Ted Greene, undated

[In this lesson, Ted provides chord diagrams for a series of I (or i) open triad inversions and the letter name of the IV chord in between each inversion. The student is to add the diagram (or notation) of those IV chords. The two chords will often share a common tone which should be tied (sustained) if possible, or played again. Items in blue illustrate one solution. You may wish to explore other possibilities.]

I - IV



Fingerboard diagrams for F and Bb chords. F chord diagrams are at frets 1, 3, 6, and 8. Bb chord diagrams are at frets 3 and 6. Blue dots indicate finger positions, and blue lines show transitions between frets.

Musical notation for the first system, showing a treble clef staff with a key signature of one flat (Bb). The melody consists of quarter notes and eighth notes, with blue dots on the notes corresponding to the fretboard diagrams above.

Fingerboard diagrams for F and Bb chords. F chord diagrams are at frets 10 and 13. Bb chord diagrams are at frets 13 and 13. Blue dots indicate finger positions.

Musical notation for the second system, showing a treble clef staff with a key signature of one flat (Bb). The notation consists of open chords (circles) on the staff, corresponding to the fretboard diagrams above.

Fingerboard diagrams for Ab and Db chords. Ab chord diagrams are at frets 4, 6, and 6. Db chord diagrams are at frets 2, 4, 6, and 9. Blue dots indicate finger positions, and blue lines show transitions between frets.

Musical notation for the third system, showing a treble clef staff with a key signature of three flats (Bbb). The melody consists of quarter notes and eighth notes, with blue dots on the notes corresponding to the fretboard diagrams above.

Fingerboard diagrams for Ab and Db chords. Ab chord diagrams are at frets 11 and 16. Db chord diagrams are at frets 11 and 16. Blue dots indicate finger positions.

Musical notation for the fourth system, showing a treble clef staff with a key signature of three flats (Bbb). The notation consists of open chords (circles) on the staff, corresponding to the fretboard diagrams above.

i - IV

Am 5, Am 7, Am 10, Am 12, Am 12, Am 17

D 7, D 10, D 12, D 10

Am 10, D 12, Am 17

Fm 1, Bb 1, Fm 4, Bb 3, Fm 6, Bb 3, Fm 8, Bb 8, or Fm 15, Bb 8

Fm 8, Bb 8, Fm 13, Bb 13, Fm 15

I IV
open tr.

Ab Db Ab Db Ab Db Ab Db Ab Db

i IV

Am D Am D Am D Am D Am D