

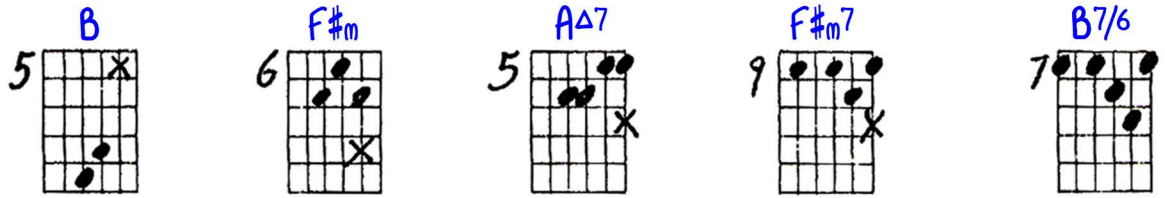
Contrary Motion Sounds with a Diversion at End

Ted Greene
1978-07-04

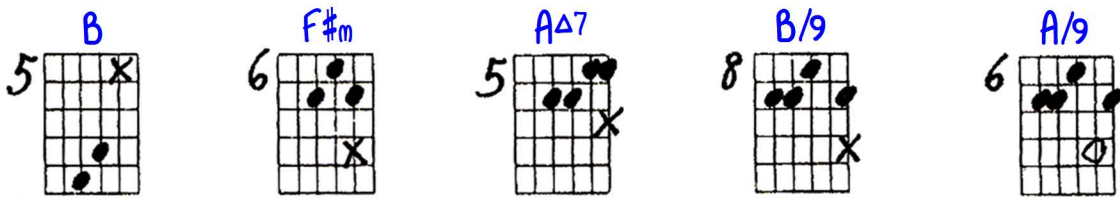
Diatonic Major Key

Playing order: ● × □ △
○ = opt.

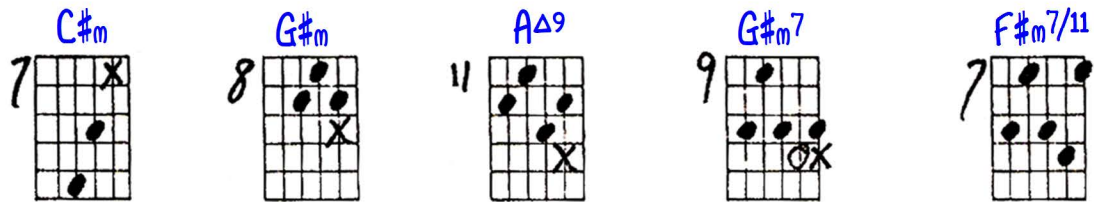
Key of E



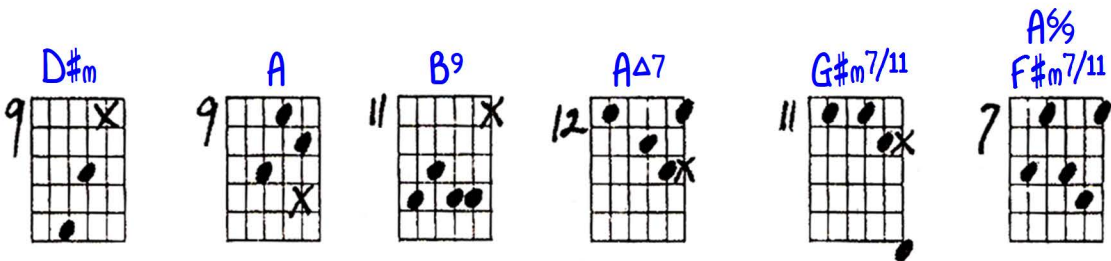
1)



2)



3)



4)



10 **E** 11 **B** 9 **C#m⁹** 13 **E/9** or **B7** 11 **AΔ7**

5)

10 **E** 11 **B** 10 **D#Δ7** 13 **G#7** 12 **C#m7** or (13 **EΔ9** 11 **F#13#11**)

6)

9 **Ebm** 10 **Bbm** 9 **DbΔ7** or **Ebm⁹** / **GbmΔ9** 9 **Db/9**

Key of Db

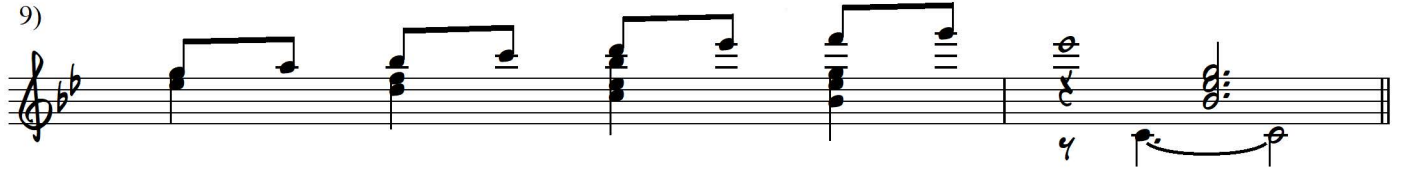
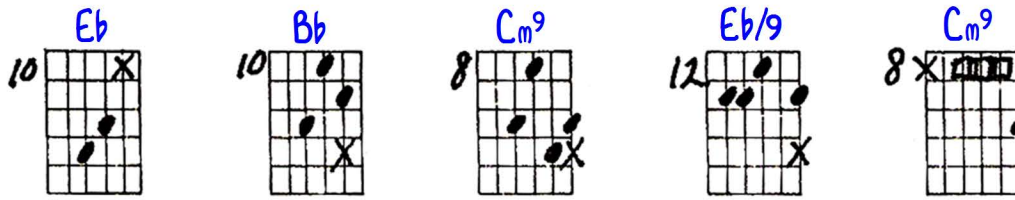
7)

11 **Fm** 11 **Ebm⁶** 10 **DbΔ7** 13 **Ab7** 13 **GbmΔ9**

8)

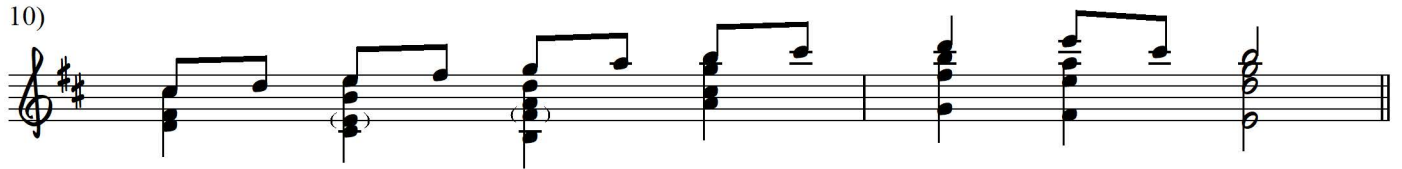
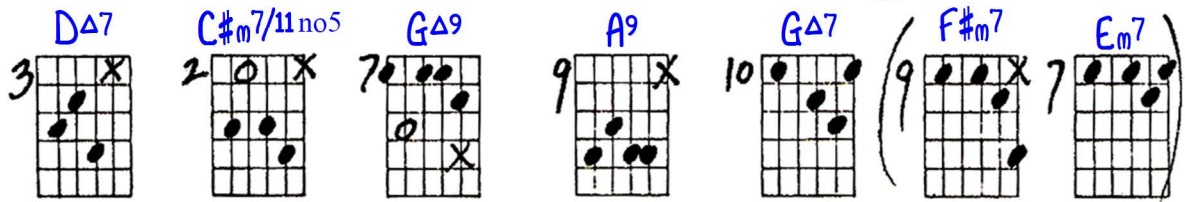
Key of Bb

9)

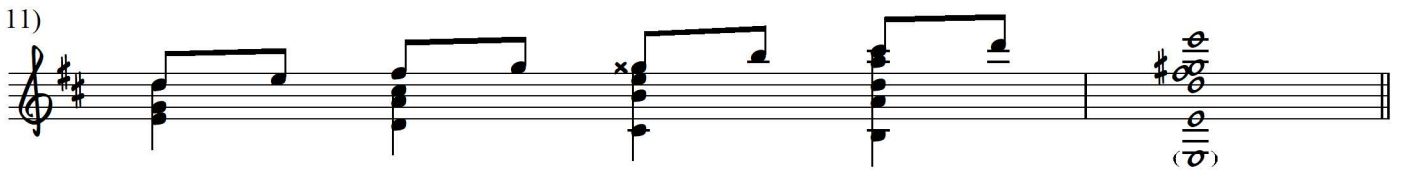
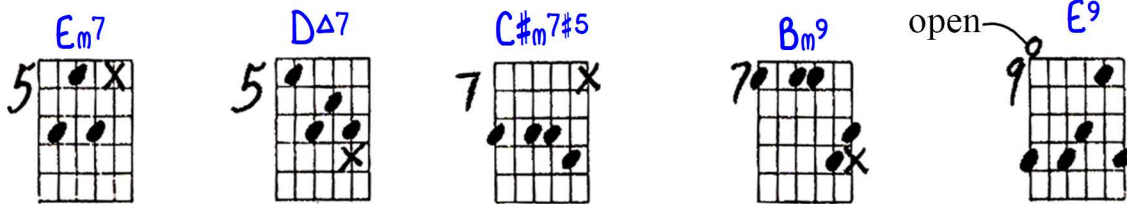


Key of D

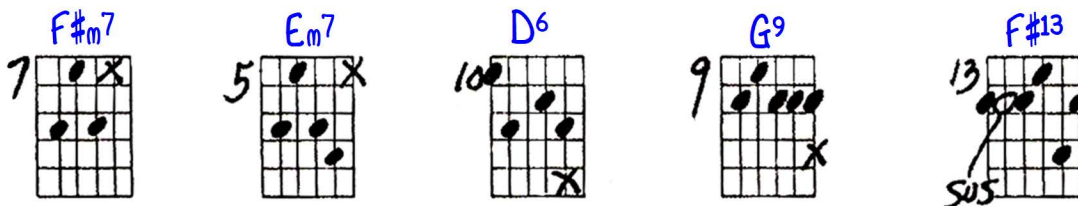
10)



11)

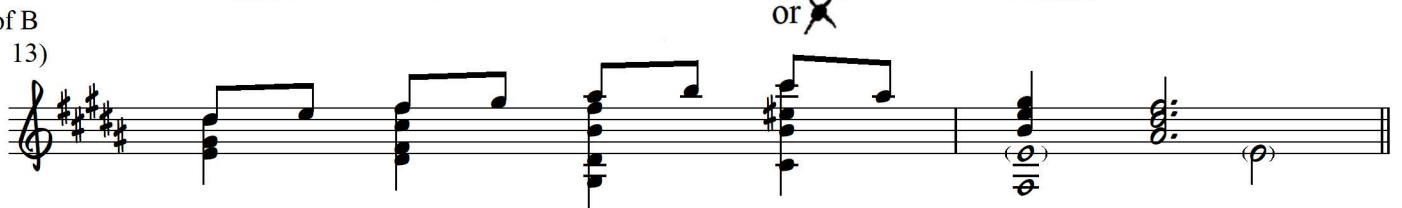
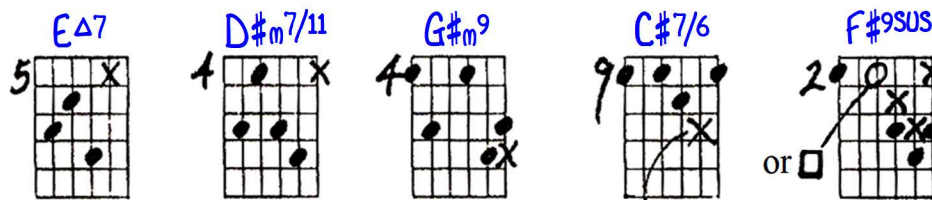


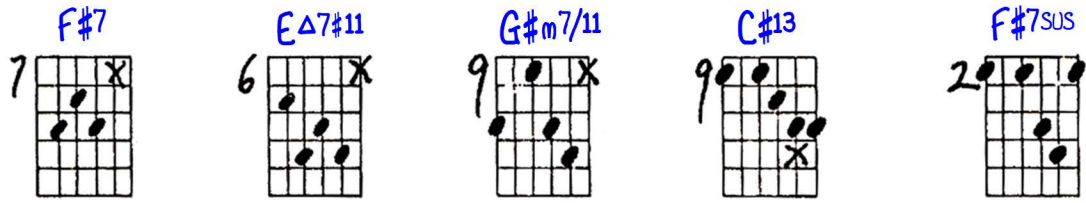
12)



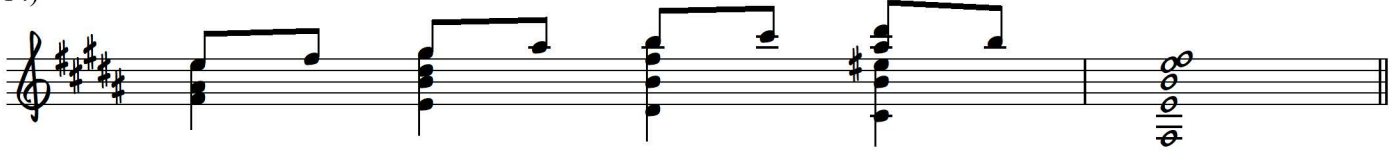
Key of B

13)

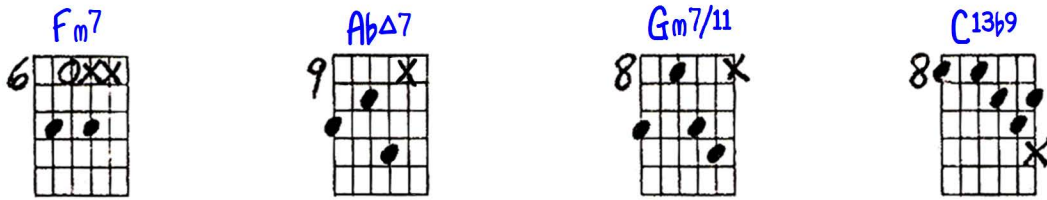




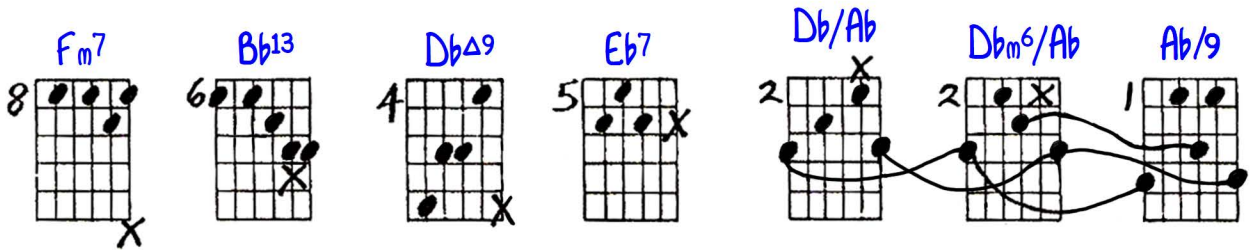
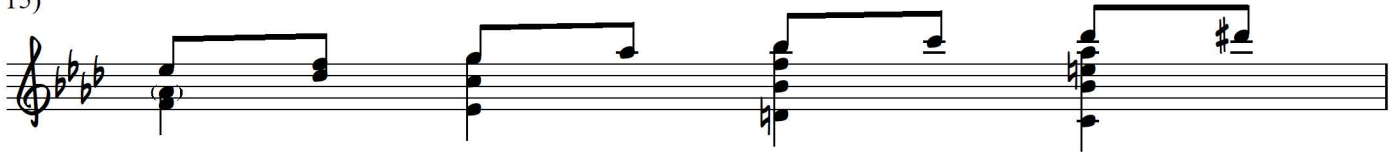
14)



Key of Ab



15)



16)



DIATONIC MAJOR KEY CONTRARY MOTION SOUNDS with a diversion at end

Key of E

5 6 5 9 7 | 5 6 5 8 6 |

7 8 11 9 7 | 9 9 11 12 11 7 |

10 11 9 13 11 | 10 11 10 13 12 (13 11)

Key of D

9 10 9 13 9 | 11 11 10 13 13

10 10 8 12 8

Key of D

3 2 7 9 10 (9 7) 5 5 7 7 9

Key of B

7 5 10 9 13 | 5 4 4 9 2

Key of Ab

7 6 9 9 2 | 6 9 8 8 8 6 4

5 2 2 1 | 8 6 11 9 13 11 8