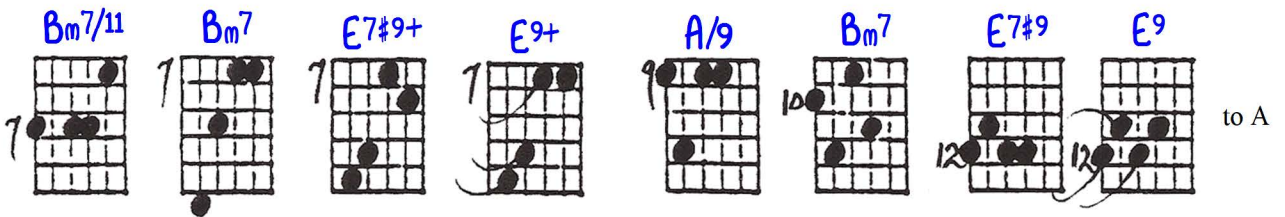
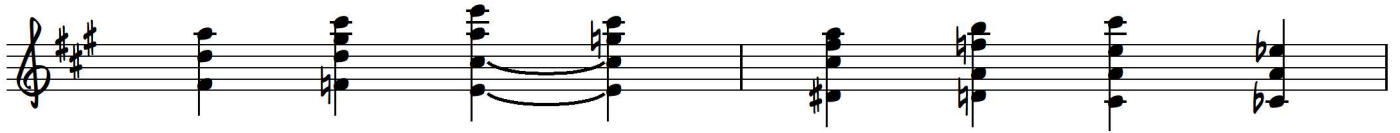
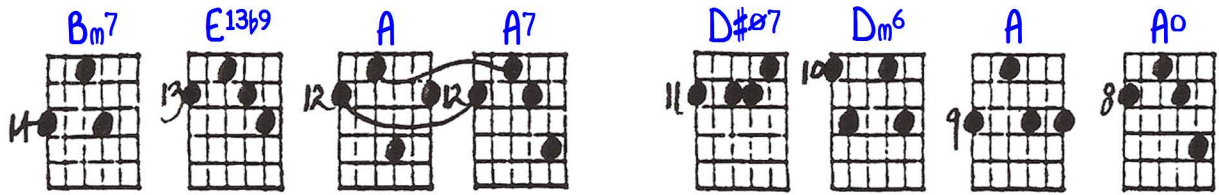
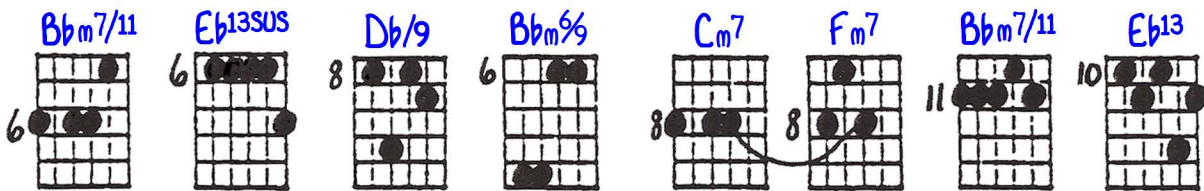
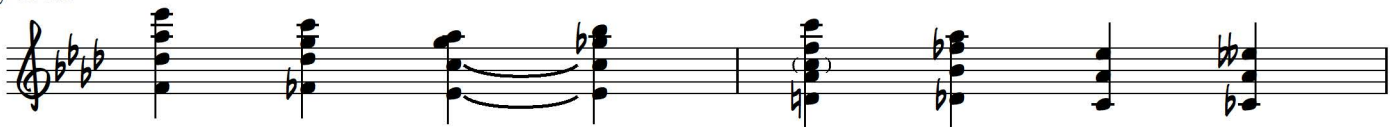
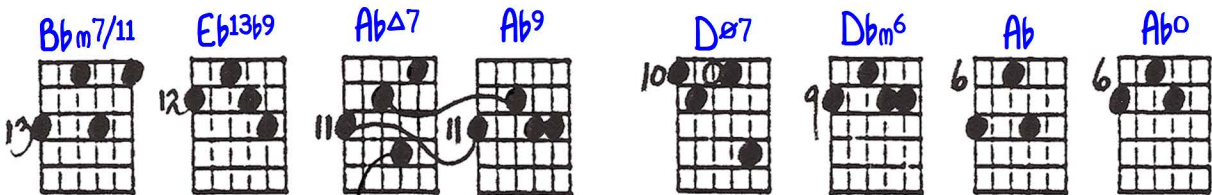


# Descending Chromatic Bass Progressions from ii7 with 5th in the bass

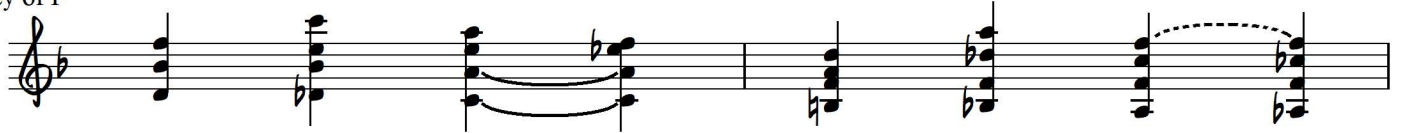
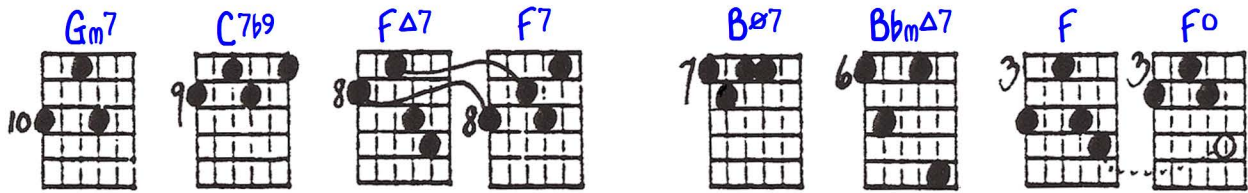
1)  
Key of A



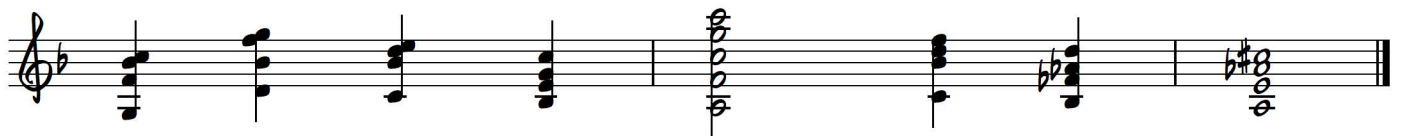
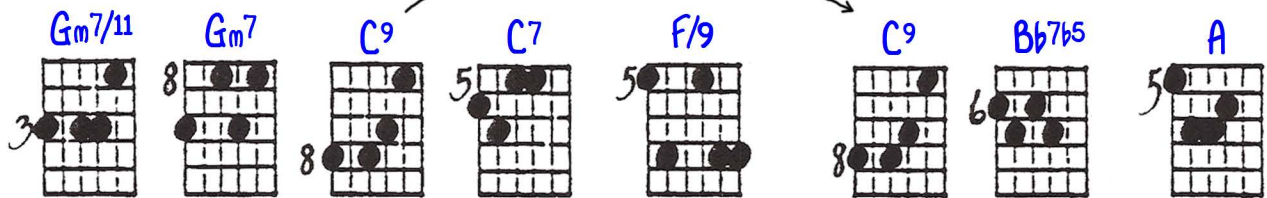
2)  
Key of Ab



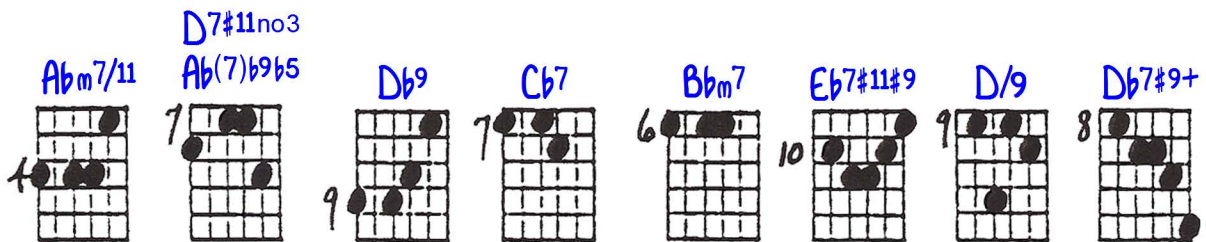
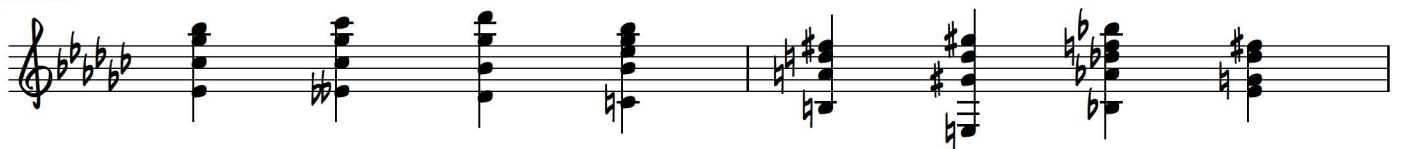
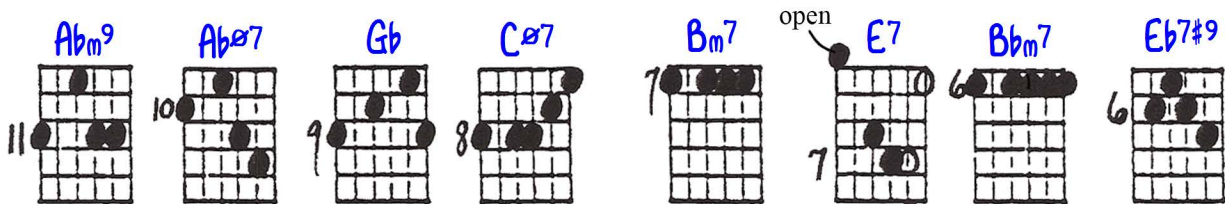
3)  
Key of F



or



4)  
Key of Gb



and  
resolve





# DESCENDING CHROMATIC BASS PROGRESSIONS from $ii_7^5$

© 11-10-87  
Paul Brannen

①  
Key of A

Two rows of guitar fretboard diagrams for Key of A. The first row shows a descending chromatic bass line starting at the 4th fret and moving down to the 7th fret. The second row shows a descending chromatic bass line starting at the 7th fret and moving down to the 12th fret.

②  
Key of Ab

Two rows of guitar fretboard diagrams for Key of Ab. The first row shows a descending chromatic bass line starting at the 13th fret and moving down to the 6th fret. The second row shows a descending chromatic bass line starting at the 8th fret and moving down to the 10th fret. A handwritten note says "omit if this is not your case" with an arrow pointing to a specific fretboard diagram.

③  
Key of F

Two rows of guitar fretboard diagrams for Key of F. The first row shows a descending chromatic bass line starting at the 10th fret and moving down to the 3rd fret. The second row shows a descending chromatic bass line starting at the 8th fret and moving down to the 5th fret. A handwritten note says "or" above a fretboard diagram.

④  
Key of Gb

Three rows of guitar fretboard diagrams for Key of Gb. The first row shows a descending chromatic bass line starting at the 11th fret and moving down to the 7th fret. The second row shows a descending chromatic bass line starting at the 9th fret and moving down to the 8th fret. The third row consists of ten empty fretboard diagrams. A handwritten note says "open" above a fretboard diagram and "only resolve" below another.