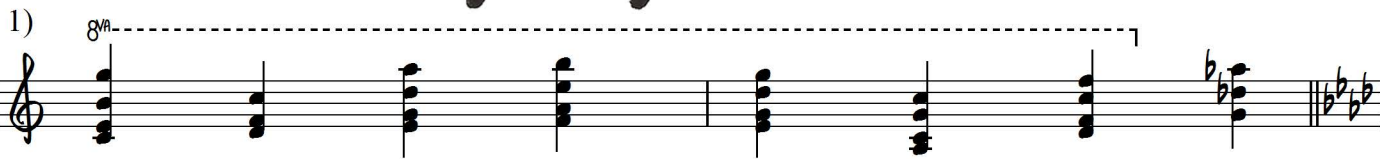
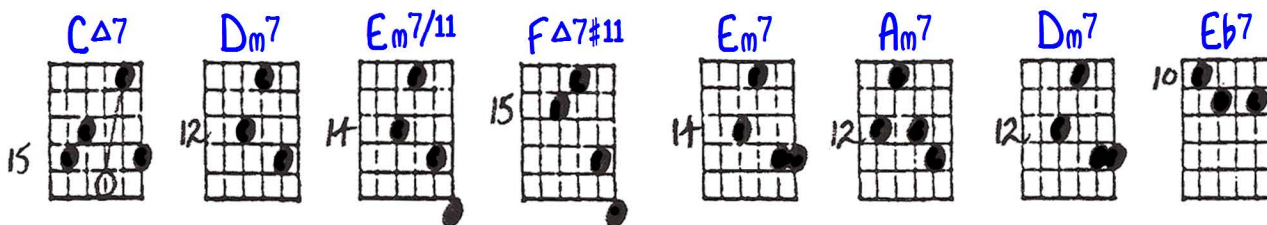


Chord Passages Starting from I

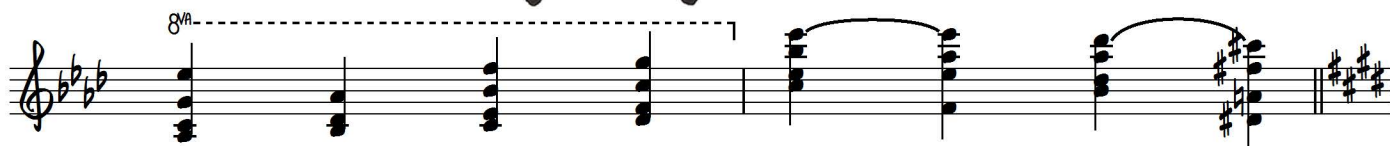
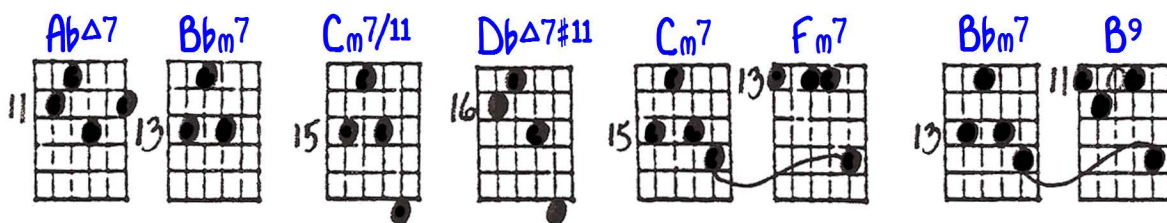
Ted Greene
1987-02-05

R37 Types

Key of C



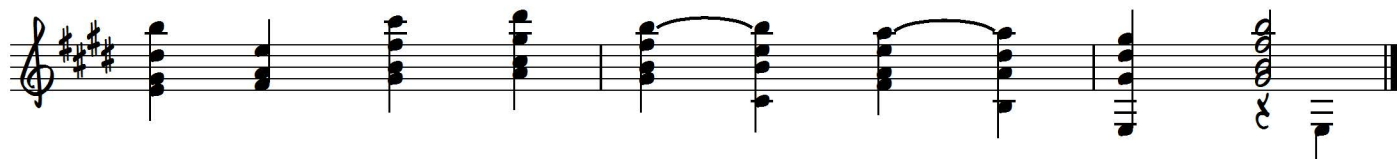
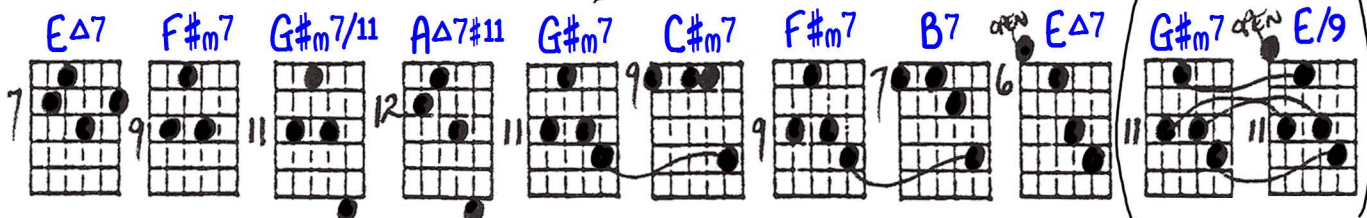
Key of Ab



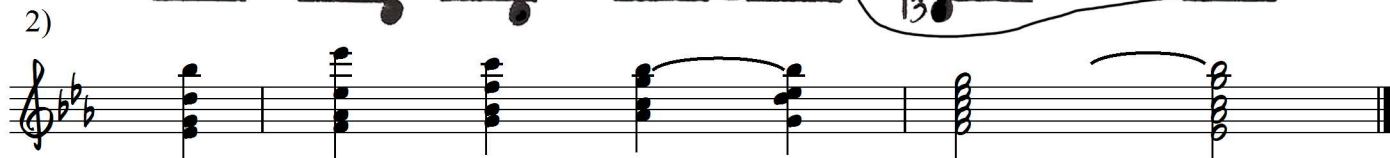
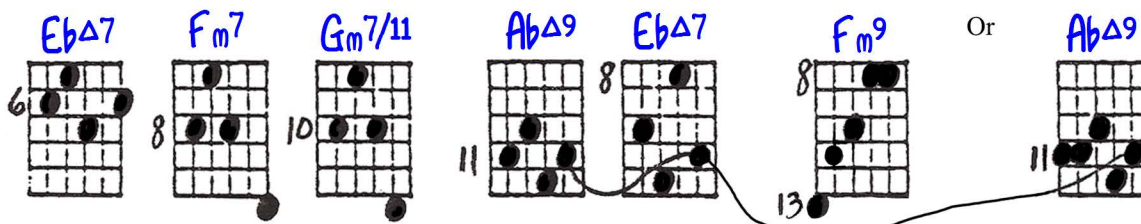
or on lower
[string] set

Or just use
...and end there.

Key of E



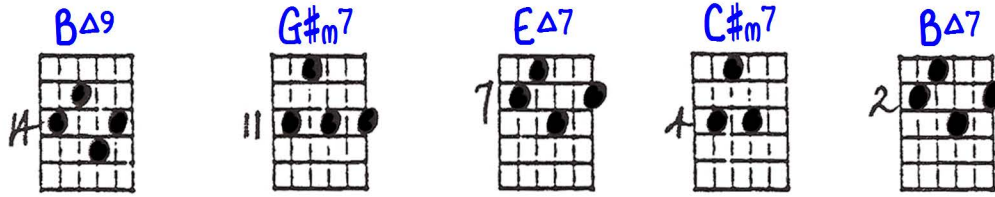
Key of Eb



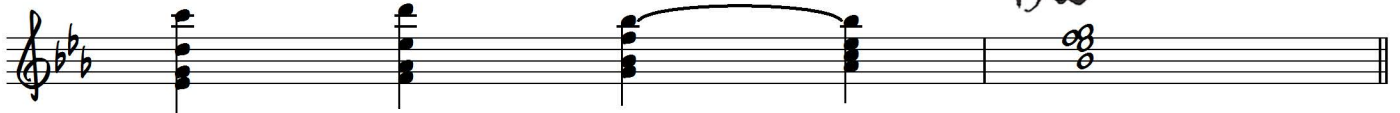
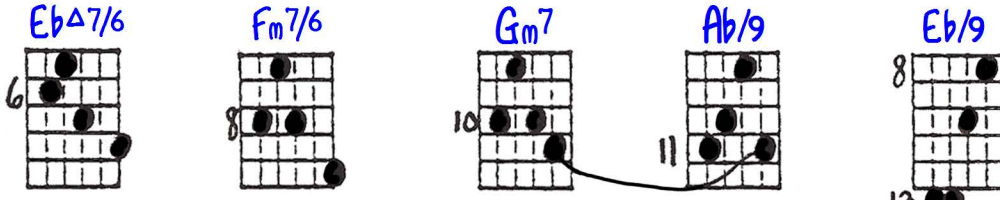
Starts on beat 4
or feel in 3/4 starting
right on beat 1

Key of B

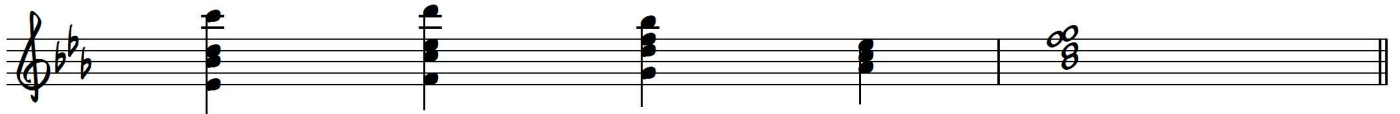
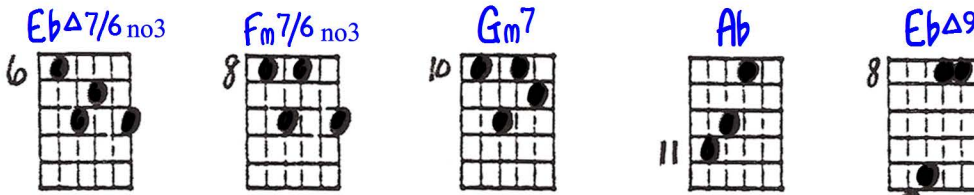
John Williams
theme 3)



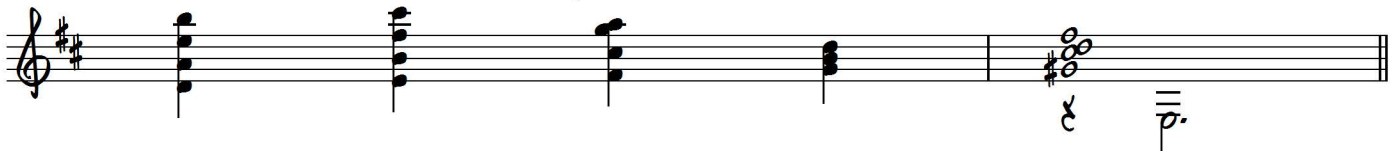
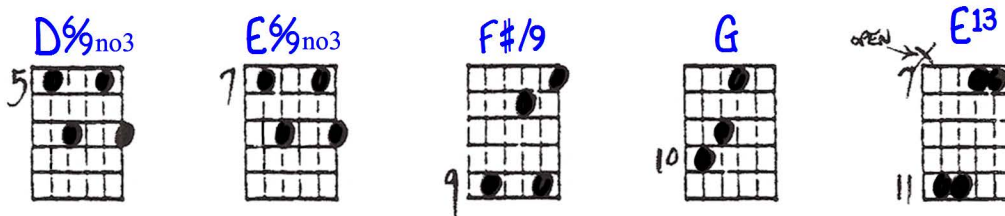
Variations:



Now
with R57:

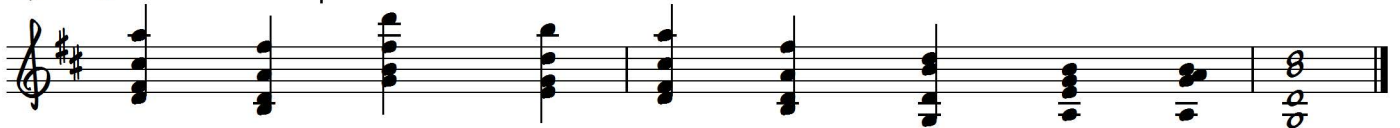
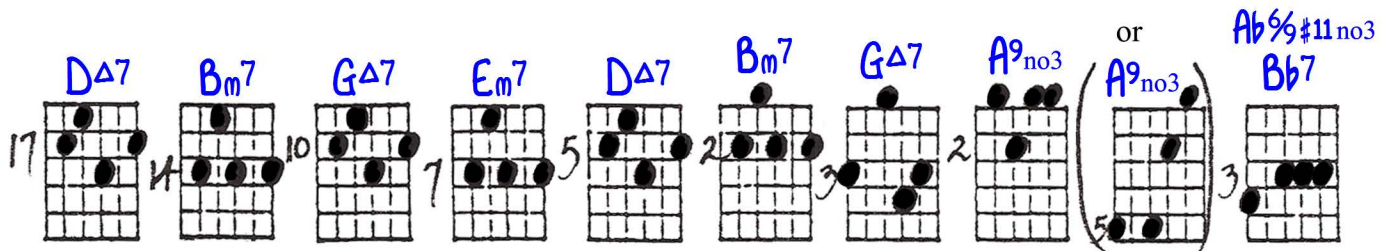


And R59
now:



Key of D

4)



Please try contrapuntal isolation of various voice combinations on all four forms in #3).

CHORD PASSAGES STARTING FROM I $\frac{7}{8}$ TYPES

© 2-5-81
Jed Greene

①

②

③

now with
7
5
R

④