

4-Note Diatonic 4th Chord Studies on the Middle 4 Strings (mixed with other ideas)

Ted Greene
1987-05-13

(Part 1)

Watch the soprano according to its degree number in the key ("watch" meaning "see" and "think of").

Key of C

1)

Watch the bass here....

ii7

$D_m^{7/11}$

G^7

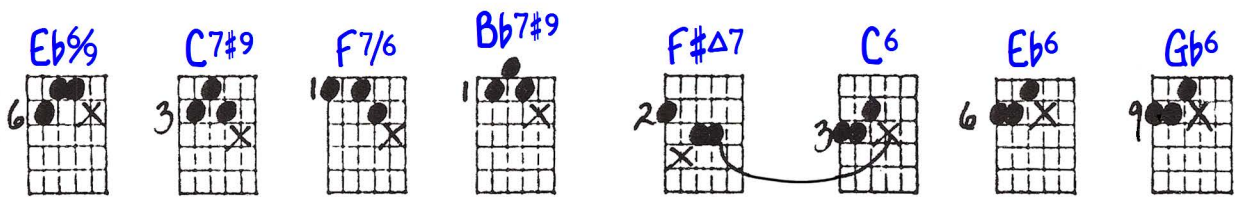
$D_b\Delta^9$

D_b^6

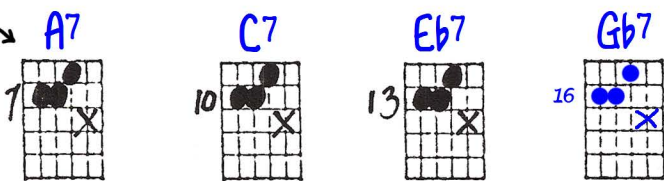
$C^{\%}$

Key of Eb

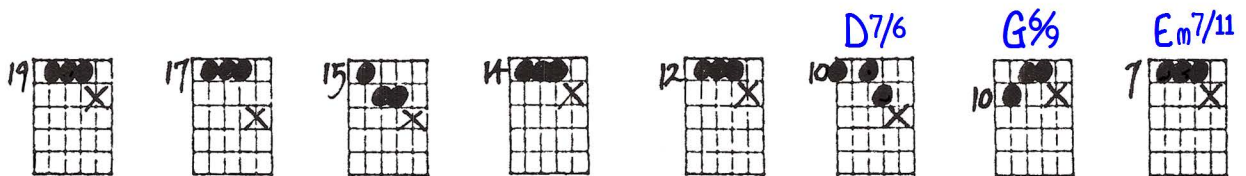
2)



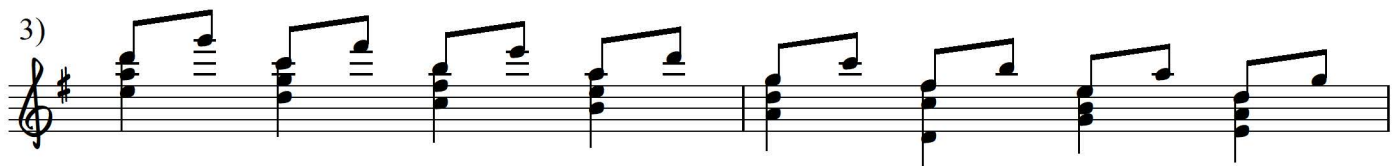
Or on the lower [string] set



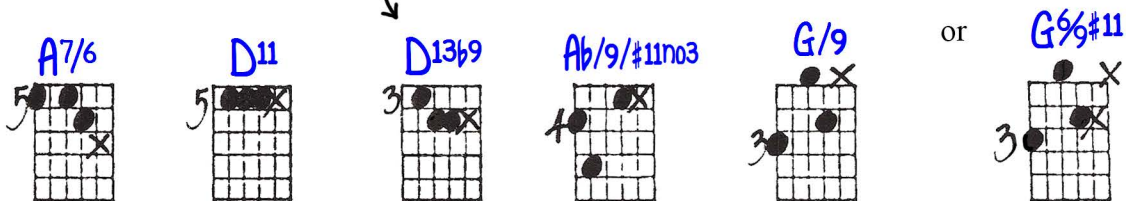
Watch the bass here (and maybe the soprano too if you feel like it).



Key of G



Since it's only one chord, watch the bass here too, even though it's not the root.



Again, watch the bass until the inversions appear....then watch the "invisible" roots.

Key of Gb

4)

18 16 14 13 11 9 8 7

Db7/6 G13 Gb13

Roots in the bass from here on.

...and resolve.

6 6 6 5 10 5 10 10 2

B9 Bbm7 Eb7#9 A7b5 Ab7/6 D9 Abm7 Db7b9 GbΔ7

Use good sense in deciding what to "watch" in each diagram.

Variation

5)

18 16 14 13 11 9 9 7

Db7/6 Gb11 Gb13b9

6 7 6 10 10 6 4 1

Ebm7/11 Bm7/11 Ebm7/11 Ab7#11 Abm11 Db13b9/Gb Gb0 Gb

A NOTE DIATONIC 4th CHORD STUDIES ON THE MIDDLE 4 STRINGS MIXED WITH OTHER IDEAS

© 1970 Jim Henson

① Key of C

WATCH THE SOPRANO ACCORDING TO ITS DEGREE NUMBER IN THE KEY (WATCH "MEANING" "SEE" and "THINK OF").

WATCH THE BASS HERE.....

ascend OP TO ascend to

② Key of F

DESCEND etc. ALL THE WAY TO

ascend on the lowest

③ WATCH THE BASS (and maybe the soprano too if you feel like it) HERE

Key of G

SINCE IT'S SHARP, WATCH THE BASS HERE TOO, EVEN THOUGH IT'S NOT THE ROOT

④ Again, watch the bass until the INVERSIONS APPEAR.... THEN WATCH THE 'INVISIBLE' ROOTS

Key of G

Roots in the bass from here on

⑤ VARIATION

Use good sense in deciding what to 'watch' in each triad