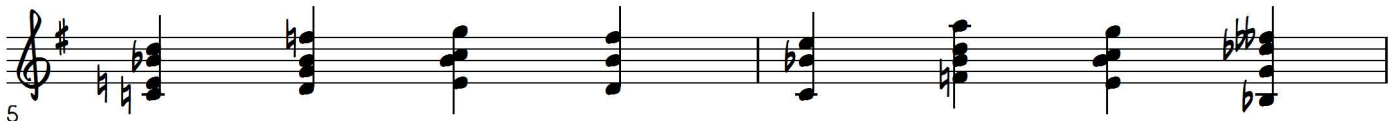
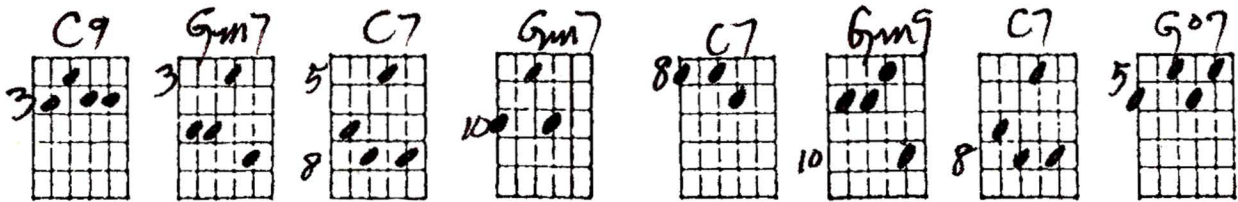
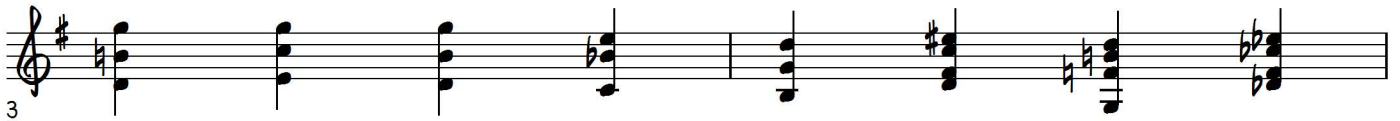
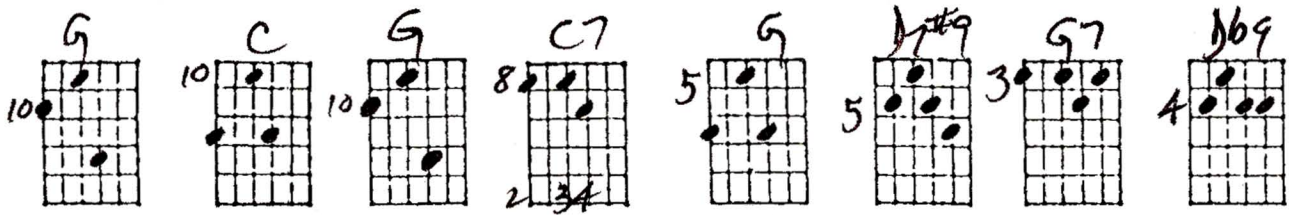
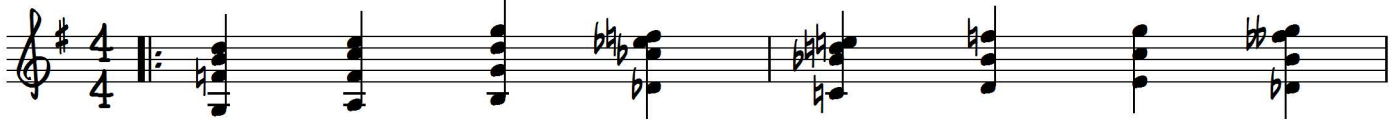
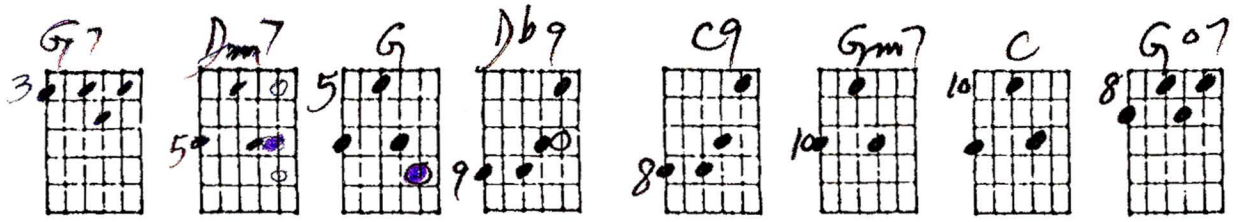


SLOW BLUES

Playing order: ● × □ △
○ = opt.

Key of G



5 G Cm7 Am7 E7#9 Am7/11 D7 G7 Eb9

7

D7 Am D Db13 C13 Gm7 C7 G7

9

10 G Cm7 Am7 E7#9 Ab9 Eb9 D9 Ab7b5

11

2-22-82

SLOW BLUES

Handwritten guitar chord diagrams for a blues progression. The diagrams are arranged in a grid with 5 rows and 10 columns. Each diagram shows a guitar fretboard with dots indicating finger positions. Above each diagram are handwritten labels for the chord and its voicing.

Row 1: G7 (I⁷), Dm7 (ii⁷), G (I), Db9 (1/2), C9 (IV⁷), Gm7 (comp min), C (IV), G07 (?), G (I), C (IV)

Row 2: G (I), C7 (IV⁷), G (I), Db9 (I⁷), G7 (I), Db9 (1/2), C9 (IV), Gm7 (comp min), C7 (IV⁷), Gm7 (comp min)

Row 3: C7 (IV⁷), Gm7 (comp min), C7 (IV⁷), G07 (I), G (I), Gm7 (1/2), Gm7 (iii), Gm7 (comp min), Eb9 (back cycle), Am/n (back cycle), D7 (back cycle)

Row 4: G7 (I⁷), Eb9 (1/2), D7 (I), Am (ii), D (I), Db13 (1/2), C13 (IV⁷), Gm7 (comp min), C7 (IV⁷), G07 (I)

Row 5: G (I), Cm7 (1/2), Gm7 (iii), Gm7 (iii), Eb9 (I⁷), D9 (I⁷), G7 (I), G7 (I), G7 (I)

Additional notes: "BACK CYCLE" is written in green in several places. A circled diagram in the bottom right of the first row is labeled "G07".

A grid of 30 empty guitar fretboard diagrams, arranged in 3 rows and 10 columns, intended for practicing or writing additional chord voicings.