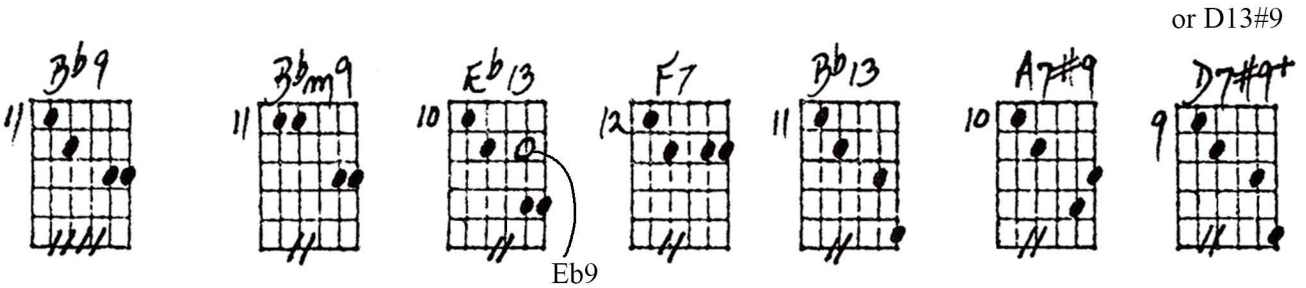
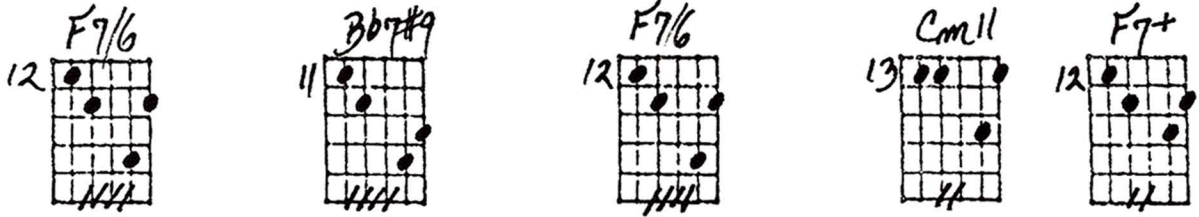


# BLUES IN F

Playing order: ● × □ △  
○ = opt.

(Upper Register Modern Voicings)

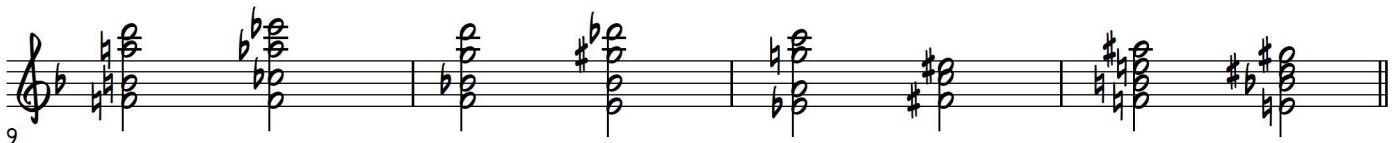
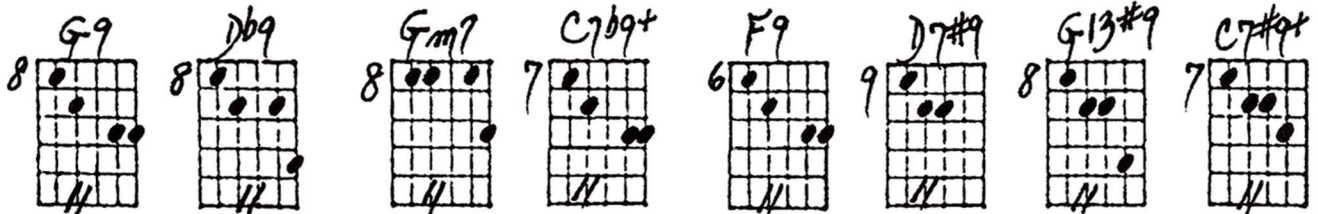
Also try the first two progressions  
on the lower strings.  
(use String Transference)



or G7#9

or C13b9

or F7#9



6 **F7/6** 12 **F7+** 11 **Bb13** 13 **C9+** or C7#9+ 12 **F9** 12 **F7** 13 **F#9**

13

12 **F7/6** 12 **F9+** 11 **Bb9#11** 11 **E7/6** 10 **Eb13** 11 **Bbm7/13**

16

10 **A7m9** 10 **Eb7/6** 9 **D13** 9 **Ab9#11** 8 **G13** 8 **Db7/6**

19

8 **Gm9** 7 **C7#9+** 6 **F9#11** 5 **Bb13** 8 **Db9** Good for fullness 7 **C13**

22

Skeleton

Handwritten guitar chord diagrams for measures 25-28:

- Measure 25: F9 (12)
- Measure 26: Bb7/6 (11)
- Measure 27: F9 (12)
- Measure 28: F7#9 (12)

Musical notation for measures 25-28, showing bass clef, treble clef, and chord symbols.

25

Handwritten guitar chord diagrams for measures 29-32:

- Measure 29: Bb7/6 (11)
- Measure 30: B7/6 (17)
- Measure 31: Bb7/6 (16)
- Measure 32: Bb7/6 (16)

Musical notation for measures 29-32, including a triplet in measure 32 and a dotted line above measure 30.

29

anticipate

Handwritten guitar chord diagrams for measures 33-36:

- Measure 33: Eb7/6 (15)
- Measure 34: D7/6 (14)
- Measure 35: Db7/6 (13)
- Measure 36: Db7+ (13)

Musical notation for measures 33-36, including a C7#9+ chord in measure 35.

32

anticipate etc.

Handwritten guitar chord diagrams for measures 37-40:

- Measure 37: Bb7/6 (11)
- Measure 38: Eb7#9 (10)
- Measure 39: Ab7/6 (9)
- Measure 40: Db6/9 (8)

Musical notation for measures 37-40, showing various chord voicings and articulation.

35

# BLUES IN F (UPPER REGISTER MODERN VOICINGS)

12-8-78  
 © J. Johnson

Also try  
 the 1st 2  
 prog.  
 on  
 the  
 lower 10  
 strings  
 (use  
 STRING  
 TRANSFERENCE)

F7/6	Bb7#9	F7/6	Am11	F7+	Bb9	Bbm9	Eb13	F7	Bb13
A7#9	D7#9+	G9	Db9	Gm7	C7b9+	F9	D7#9	G13#9	C7#9+
F7/6	F7+	Bb13	C9+	F9	F7	F#9	F7/6	F9+	Bb9#11
E7/6	Eb13	Bbm7/13	Am7	Eb7/6	D13	Ab9#11	G13	Db7/6	Gm9
C7#9+	F9#11	Bb13	Db9	C13	F9 SKELETON	Bb7/6	F9	F7#9	Bb7/6
B7/6	Bb7/6	Bb7/6	Bb7/6	F9	E7/6	Eb7/6	D7/6	Db7/6	Db7+
Gm11	F#9	C13#9	F7#9	Bb7/6	Eb7#9	Ab7/6	Db6/9	Db7/6	Gm7/11
C7b9	F#7								

FOR FULLNESS

7#9+ AMPLIFIED ETC.