

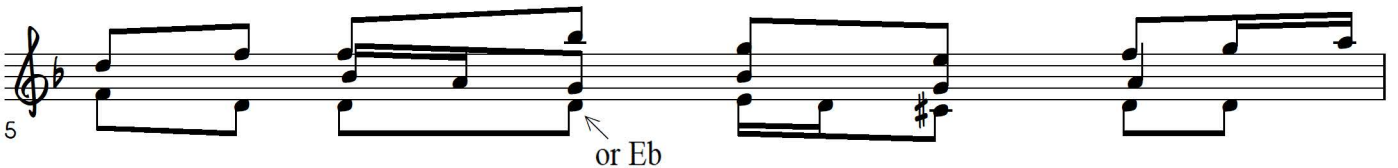
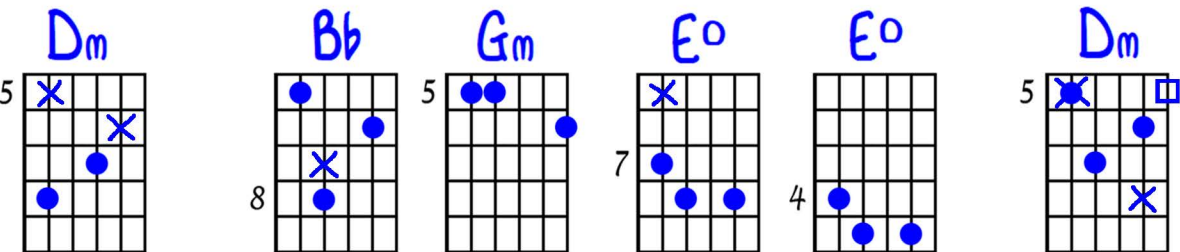
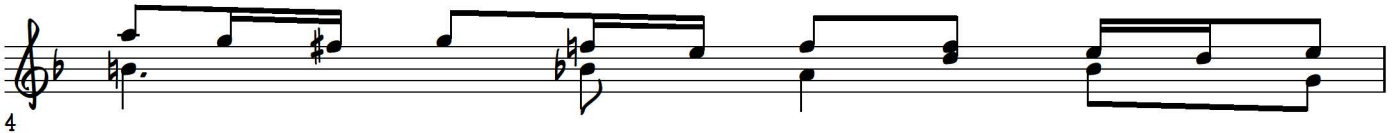
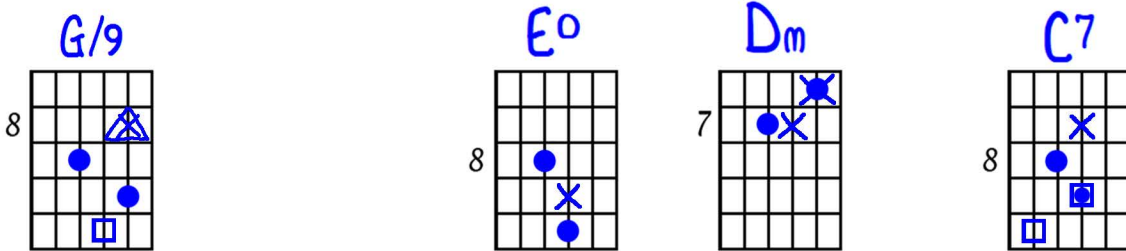
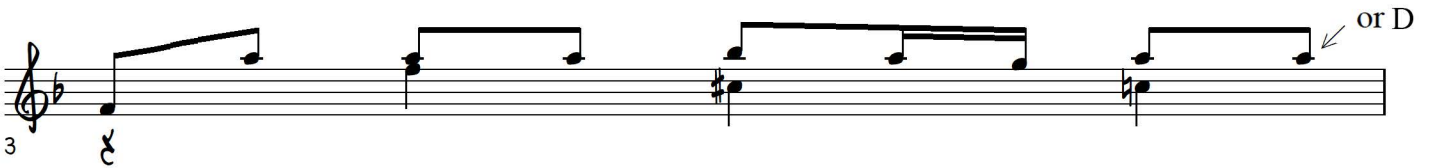
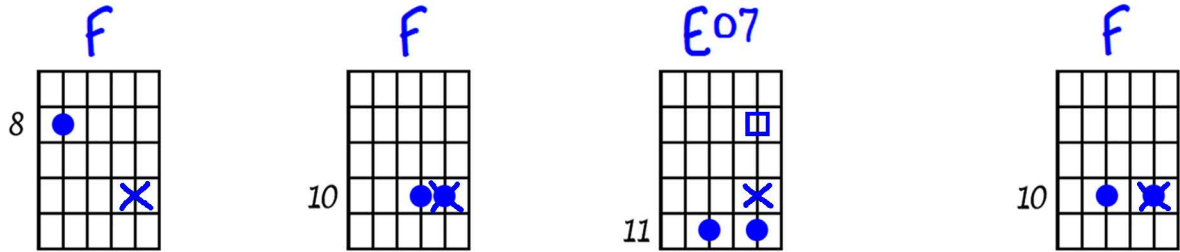
Playing order: ● × □ △

Chromatic (Dm) Fugue

Ted Greene, 1970-09-03

[Chord diagrams are only suggestions for one way to play this piece. There are other possible chord forms.]

1983-11-05
Try 8va (tuned down 1/2 step)



5 C7 F C7 F

6

Bright double-time
[?] befitting the tempo

8 Dm Bb Gm E^o E^o Dm Dm/11

10 Am7 Am7 Gm Dm F C C7 F

CHROMATIC (Dm) FUGUE

9-3-70

11-5-83 TRY
SVA
(TUNED DOWN
& STOP)

Handwritten musical notation for the first system of a fugue. It consists of three staves. The top staff has a treble clef and a key signature of one flat (B-flat). It contains a series of notes with stems pointing up, followed by a series of notes with stems pointing down, and then a series of notes with stems pointing up. The middle staff has a bass clef and contains notes with stems pointing up. The bottom staff has a bass clef and contains notes with stems pointing up. There are some annotations like 'x' and '6' near the notes.

BRITISH
DANCE
KING KEMPO
SVA

TRIA STUN

Handwritten musical notation for the second system of a fugue. It consists of two staves. The top staff has a treble clef and a key signature of one flat (B-flat). It contains a series of notes with stems pointing up, followed by a series of notes with stems pointing down, and then a series of notes with stems pointing up. The bottom staff has a bass clef and contains notes with stems pointing up. There are some annotations like 'x' and '6' near the notes.