

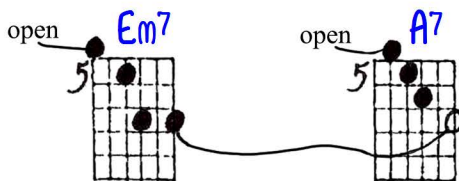
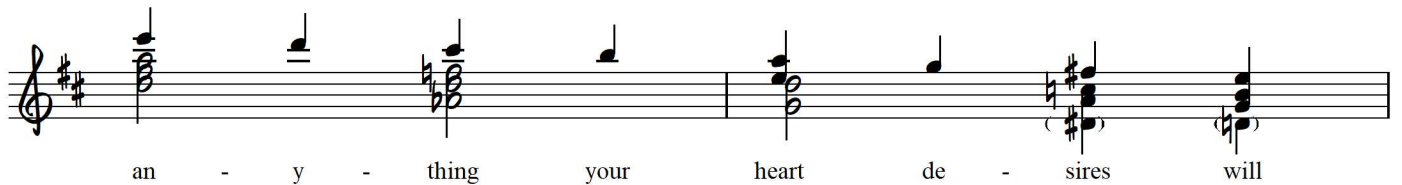
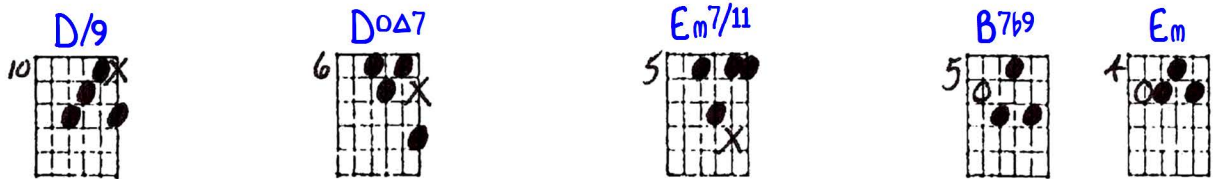
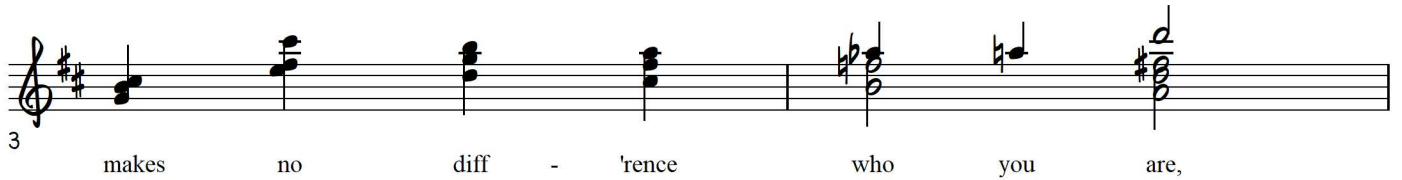
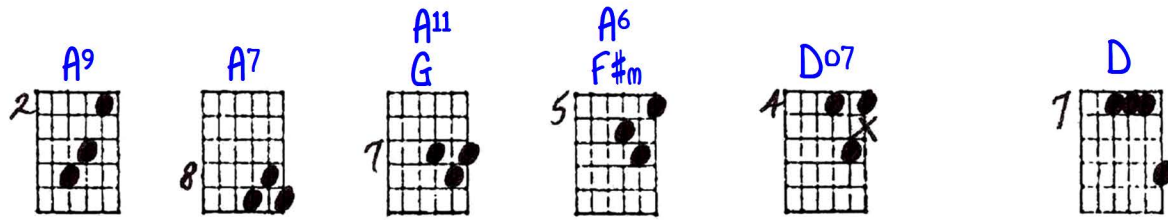
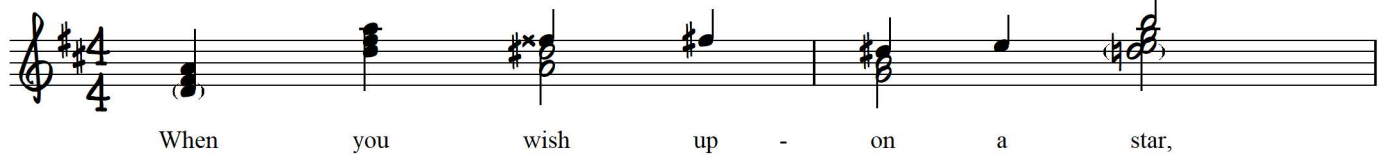
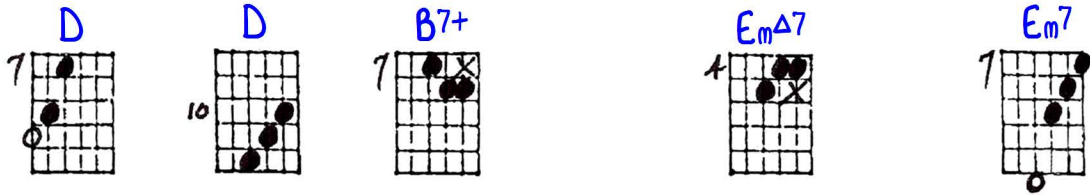
# WHEN YOU WISH UPON A STAR

From Walt Disney's PINOCCHIO

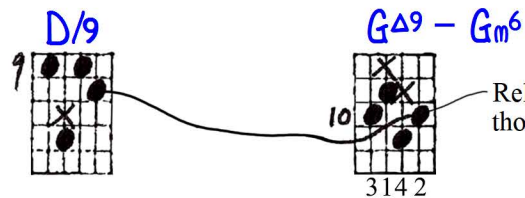
Starts at a fairly easy level and progresses to intermediate with an optional advanced last "8" and tags

Playing order: ● × □ △  
○ = opt.

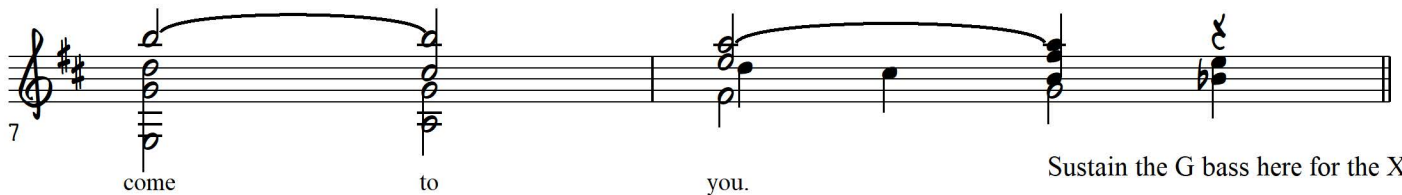
Solo Guitar  
Key of D



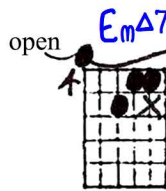
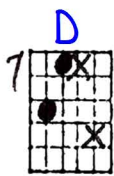
----- Fill -----



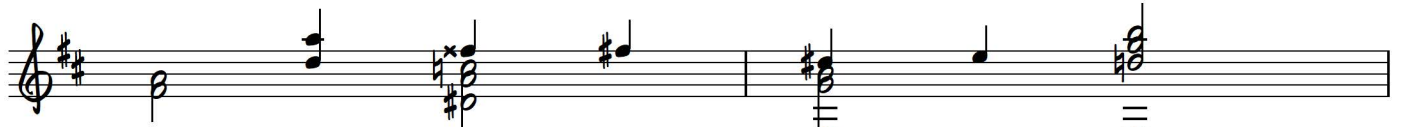
Release this note though when the X's enter.



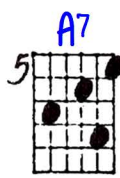
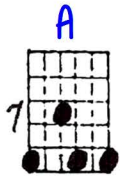
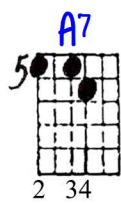
Sustain the G bass here for the X's.



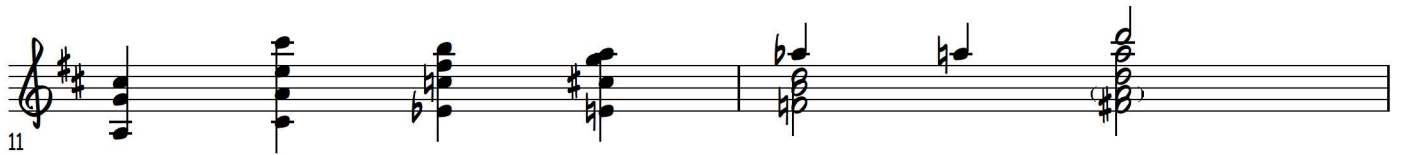
or harmonics



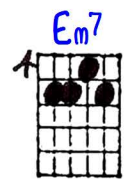
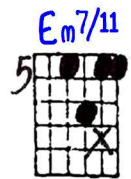
If your heart is in your dreams,



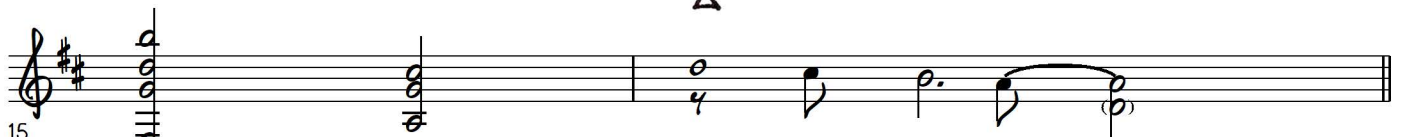
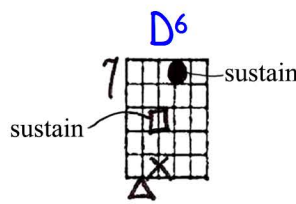
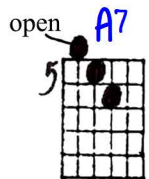
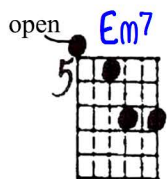
2 3 4



no re - quest is too ex - treme,



when you wish up - on a star as



dream - - ers do.

----- optional: hit bass in chords first here -----

Bridge:

E<sup>o</sup>7 A7/6 F#m7 D/9 Bm7  
 5 or open E 5 7 7 7

Fate is kind,

Em7 Em7 B7b9 Em7 D<sup>o</sup>7 D  
 7 5 6 7 8 9

19 she brings to those who love,

Bm Bm<sup>Δ</sup>7/6 - Bm7 E9#11 Bm F# Bm  
 7 7 11 9 9 12

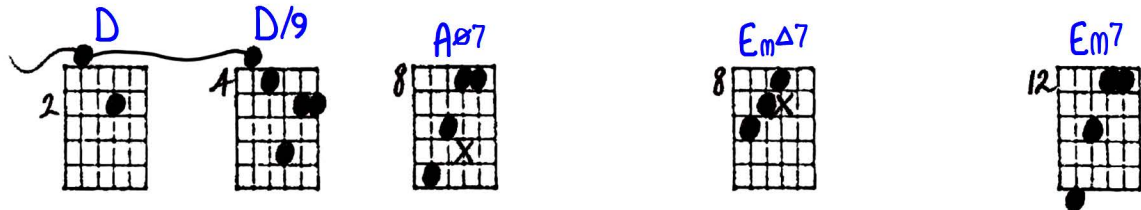
the sweet fulfillment of their secret

Gm7 - C<sup>9</sup> G/9#11 or G/9#11 open A9sus A7/6  
 8 10 10 5 5

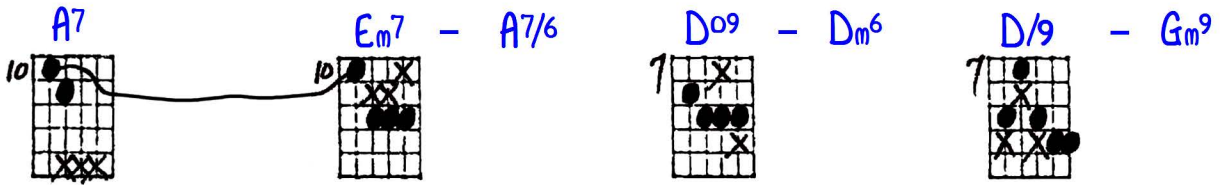
23 long - - - - - ing.

Now either repeat the 2nd verse, or continue on to the more advanced last "8" and tags.

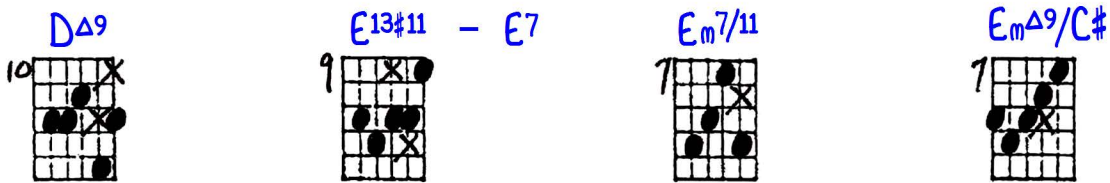
"When You Wish Upon a Star" - Ted Greene Arrangement p.4



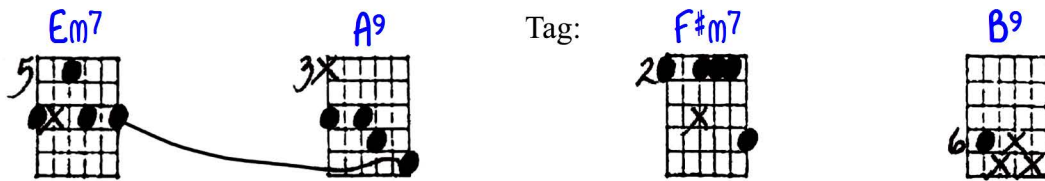
Musical staff for the first system with lyrics: Like a bolt out of the blue,



Musical staff for the second system with lyrics: Fate steps in and sees you thru,

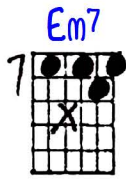


Musical staff for the third system with lyrics: When you wish up - on a star your

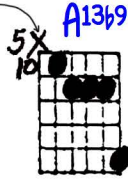


Musical staff for the fourth system with lyrics: dreams come true.

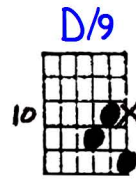
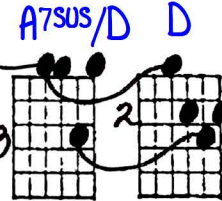
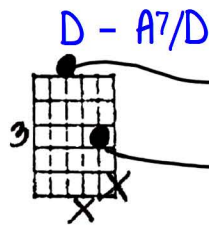
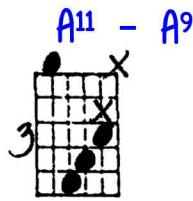
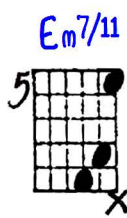
2nd Tag:



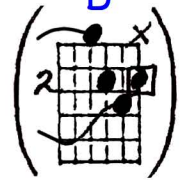
with right hand



12th fret chimes (let ring under next 3 diagrams):

or



SOLO GUITAR

# WHEN YOU WISH UPON A STAR - NEP WASHINGTON - LEIGH HARLANE (1940)

87-11-28  
J. Williams

K493

D

D

Em7

STARTS AT A FAIRLY EASY LEVEL + PROGRESSES TO INTERMEDIATE WITH AN OPTIONAL ADVANCED LAST 8th + TAGS

SUSTAIN WITH 10 BASS HE. FOR THIS RELEASE THIS NOTE THROUGH WHEN THE X IS ENTER

JUSTIN TUNING

NOW EITHER REPEAT THE 2ND VERSE OR CONTINUE ON TO THE MORE ADVANCED LAST 8th + TAGS

12th fret CHIMES (LET RING UNDER NEXT 3 BARS)

one and two and three three and uh

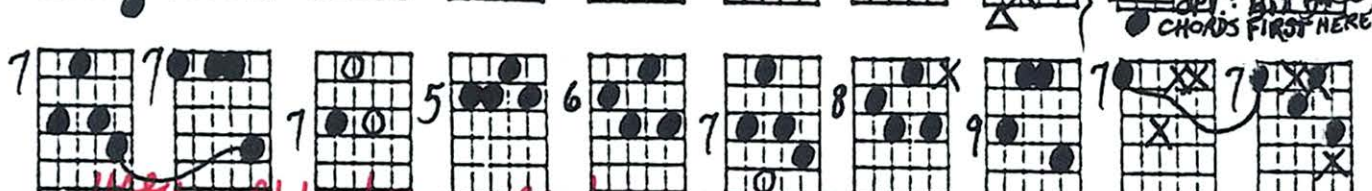
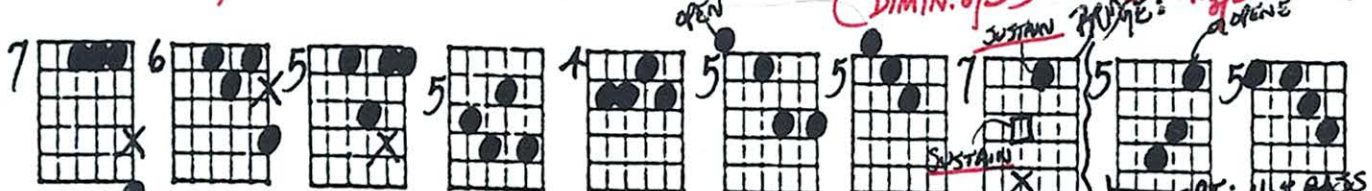
8-29-99  
SOLO  
GUITAR  
Key of G

Thank you Bob - you made Barbara very happy. Hope you enjoy playing order: X O Δ  
WHEN YOU WISH UPON A STAR - NEB WASHINGTON + LEIGH HARLANE (1940)  
Learn some new things from this page!

8-11-88  
2nd Harmonic

STARTS AT A FAIRLY EASY LEVEL + PROGRESSES TO INTERMEDIATE WITH AN OPTIONAL ADVANCED LAST 8th + TAGS

SUSTAIN THE G-BASS HERE FOR THE X'S. RELEASE THIS NOTE THOUGH WHEN THE X IS ENTER.



STAND-UP "TP-BARRE"

DIM. SUBST. (II 7 4 10)

2 3 3 3 4

2 4 2 8 1

3 4 2 2 1

1 3 2 7 1

12th fret CHIMES (LET RING UNDER NEXT 3 DIAGRAMS)

NOW EITHER REPEAT THE 2ND VERSE OR CONTINUE ON TO THE MORE ADVANCED LAST 8th + TAGS

near the bone base of the fingers ("SLANT BARRE")

1st finger

2nd

3rd

4th

one and two and three three and ah

# WHEN YOU WISH UPON A STAR - LEIGH HARLINE (1940)

8-6-77

Handwritten musical notation for the first staff of the piece. The staff is in treble clef with a common time signature (C). The melody consists of quarter and eighth notes. Above the staff, the following chords are written: C, A7, Dm, Dm7, G7, C<sup>o</sup>7, C, C<sup>o</sup>7, Dm, G<sup>o</sup>7, G7, C, C, Fm<sup>b</sup>6, G7, C. A first ending bracket spans the final two measures of the staff, with the number '1' above the first measure and '2, 3' above the second measure.

Handwritten musical notation for the second staff of the piece. The staff is in treble clef with a common time signature (C). The melody consists of quarter and eighth notes. Above the staff, the following chords and annotations are written: Dm, D<sup>b</sup>9/3, G7/3, C<sup>o</sup>7/3, C/3, Am, G, F#, E, D7, MID-RANGE BASS, MID-RANGE BASS, C, B, A, Fm<sup>b</sup>6/Ab, G7. Additional annotations include 'OPT: G PEDAL BASS' under the first measure and 'OPT: A PEDAL BASS' under the second measure.