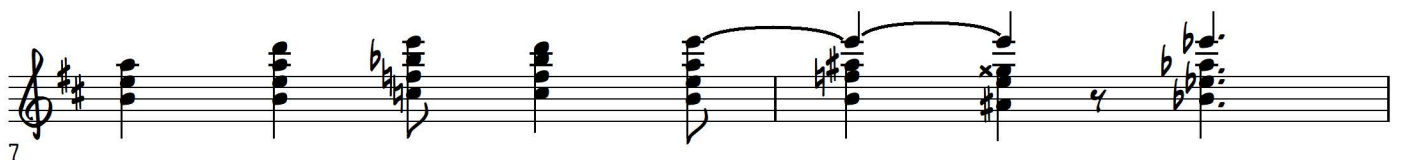
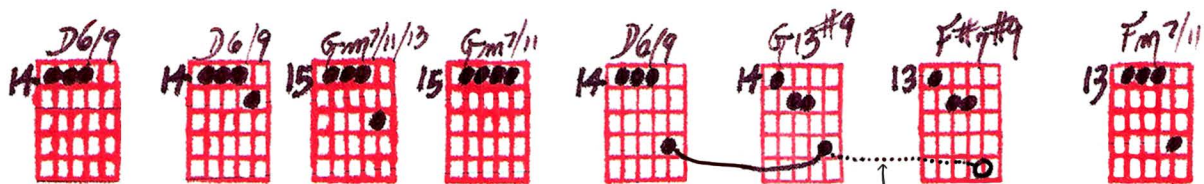
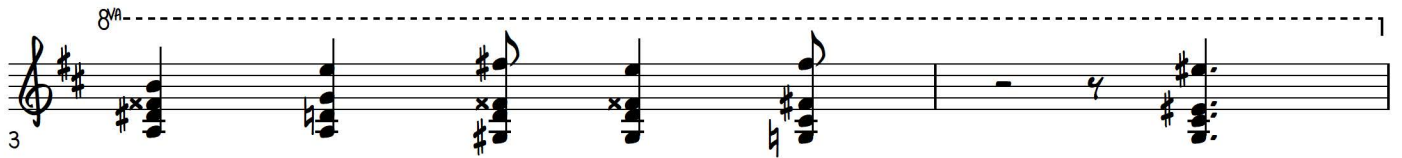
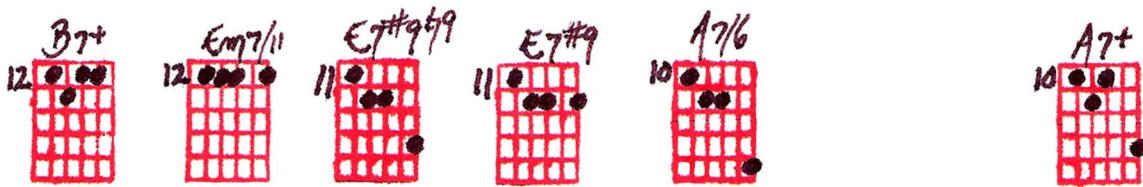
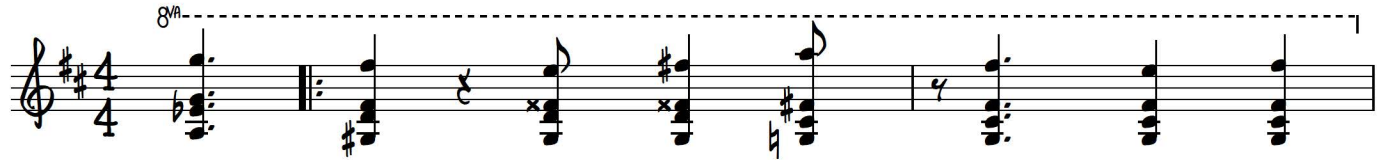
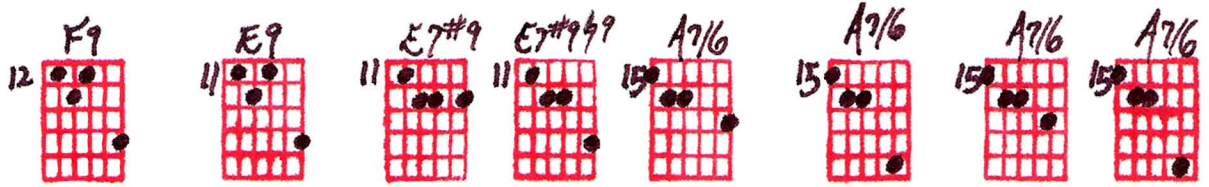


SHINY STOCKINGS

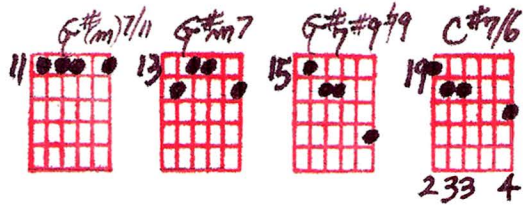
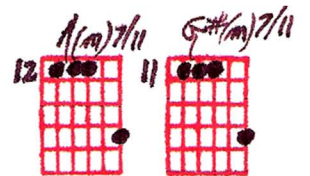
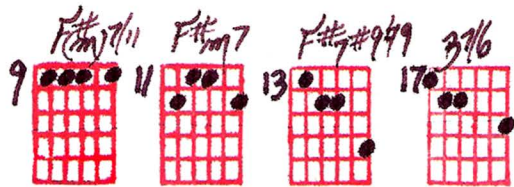
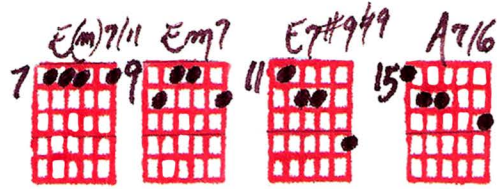
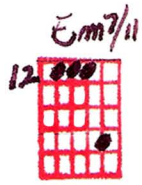
Playing order: ● × □ △
○ = opt.

Chord Melody Style

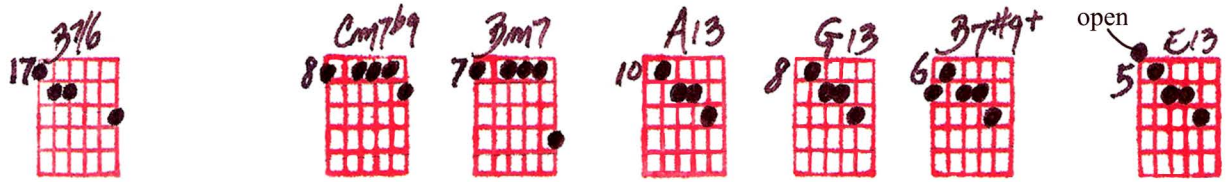
Key of D



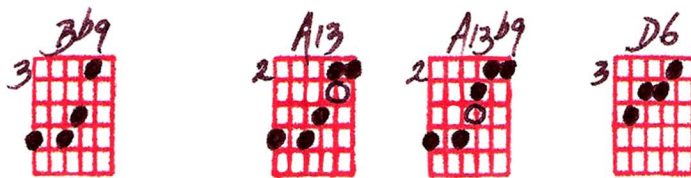
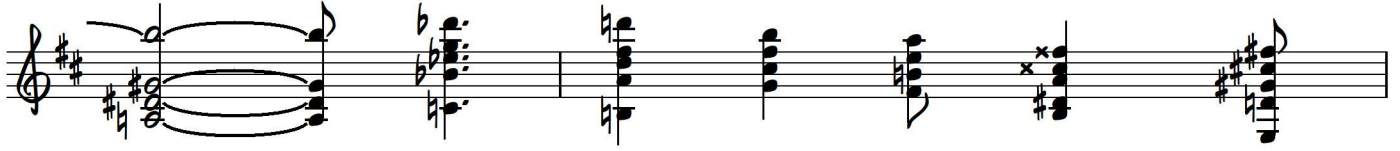
"Shiny Stockings" - Ted Greene Arrangement, key of D, p. 2



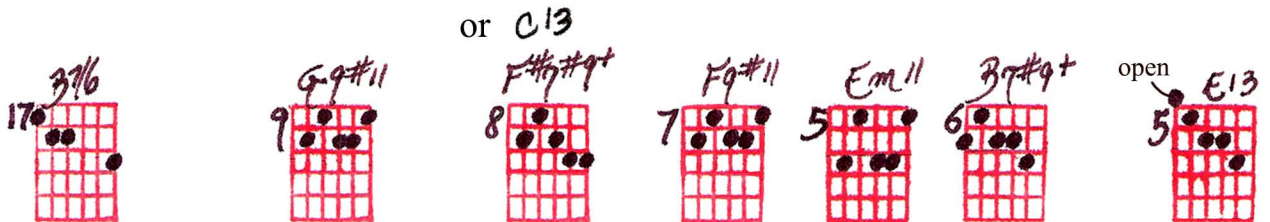
"Shiny Stockings" - Ted Greene Arrangement, key of D, p. 3



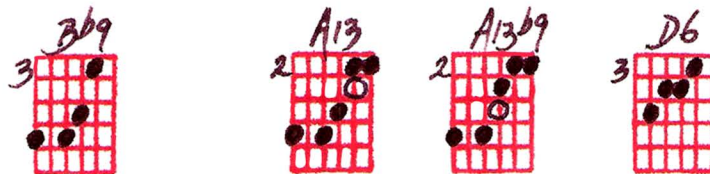
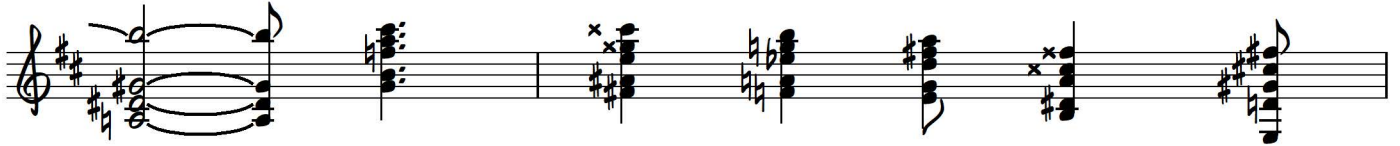
2. 8va -----



#1 Optional Ending:

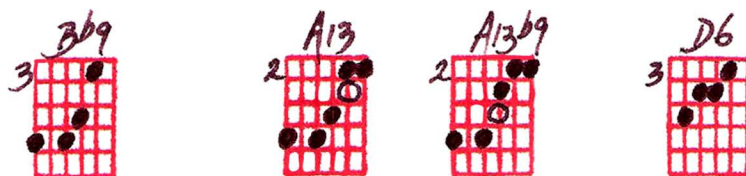
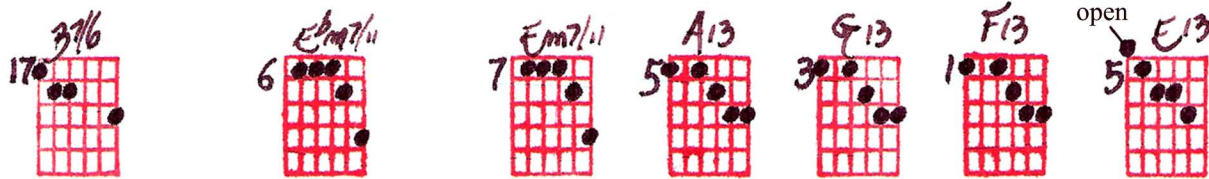


3. 8va -----



"Shiny Stockings" - Ted Greene Arrangement, key of D, p.4

#2 Optional Ending:



Write a version in a lower octave of the whole song.

CHORD MELODY STYLE - SHINY STOCKINGS by Frank Foster

9-2-77
ARR. © Ted Greene

Key of D

Handwritten guitar chord diagrams for "Shiny Stockings" in D major. The page contains 10 rows of chords, each with a red grid and black dots representing fingerings. Chords include F9, E9, E7#9, E7#9#9, A7/6, A7/6, A7/6, B7+, Em7/11, E7#9#9, E7#9, A7/6, A7+, D6/9, D7#9, D7#9#9, G13, G13#9, C13, C7/6, D6/9, D6/9, Gm7/11/13, Gm7/11, D6/9, G13#9, F#7#9, Fm7/11, Em7/11, E(m)7/11, Em7, E7#9#9, A7/6, G(m)7/11, F#(m)7/11, F#(m)7/11, F#(m)7, F#7#9#9, C#7/6, C#7/6, F#6/9, A#9, D7/6, C7/6, Cm7b9, Bm7, A13, G13, B7#9+, E13, Bb9, A13, A13b9, D6, G9#11, F#7#9+, F9#11, Em11, B7#9+, E13, Bb9, A13, A13b9, D6, C13, Em7/11, Em7/11, A13, G13, F13, E13, Bb9, A13, A13b9, D6. Includes annotations like "Optional", "D.C. al CODA", and a final instruction: "Write a version in a lower octave of the whole song".