

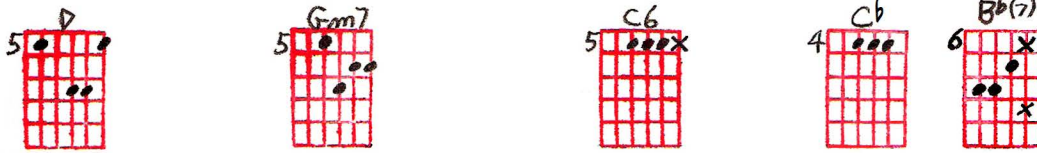
MICHELLE

Playing order: ● × □ △
○ = opt.

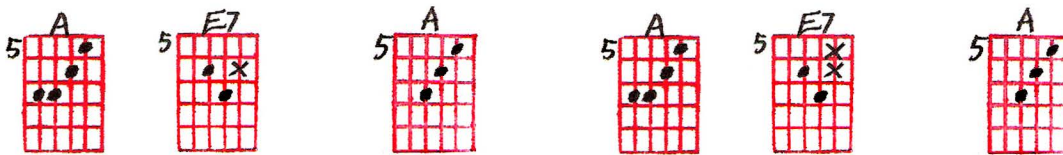
Three Chord Melody Studies

[Outline format: you have to add the extra melody notes.]

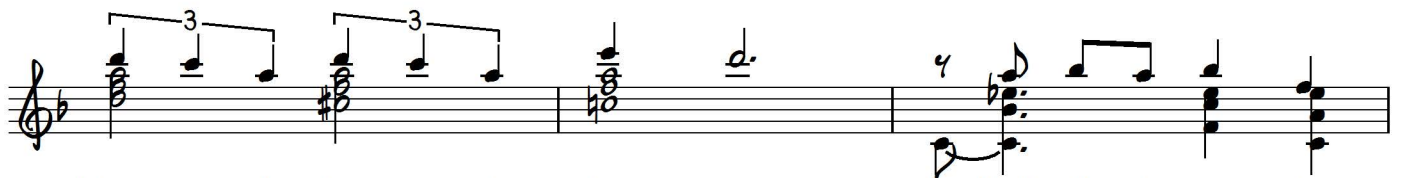
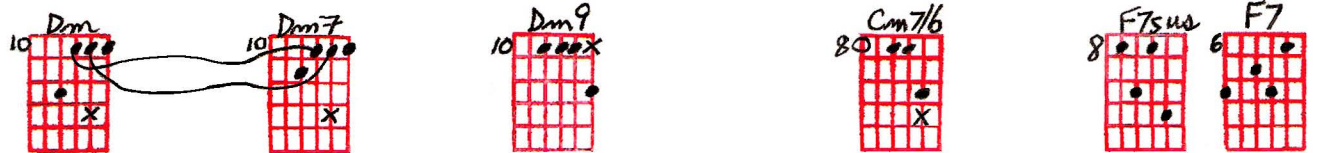
#1, 1974
Basic
version



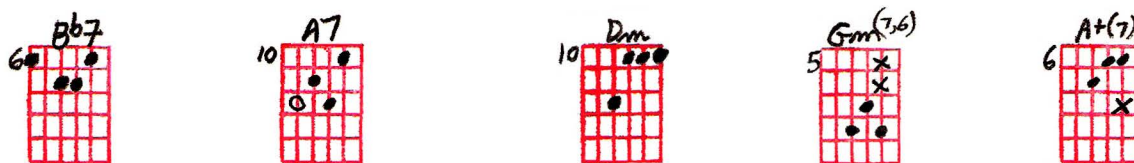
1. Mich - elle, ma belle, these are words that go to - geth - er
2. Mich - elle, ma belle, sont les mots qui vont tres bien en -



well, my Mi - chelle. semble, tres bien en - semble. I

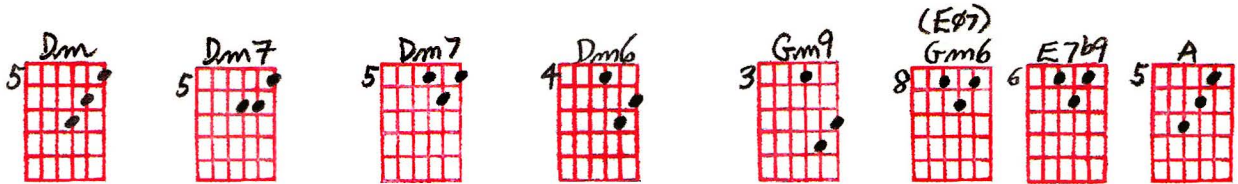


1. love you, I love you, I love you. That's all I want to
2. need to, I need to, I need to, I need to make you
3. want you, I want you, I want you, I think you know by



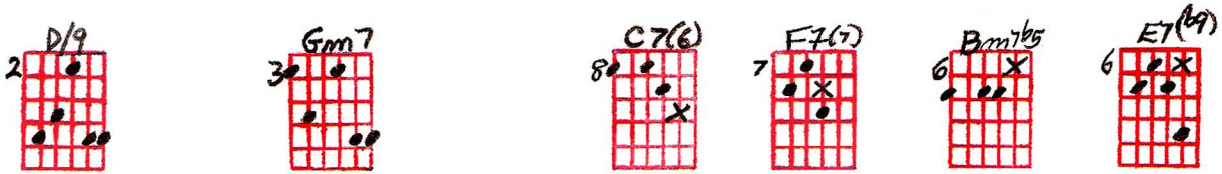
say. un - til I find a way _____ I will
see Oh what you mean to me, _____ un -
now. I'll get to you some - how, _____ un -

"Michelle" - Three Ted Greene Arrangements p.2



15 say the on - ly words I know that you'll un - der - stand.
 til I do I'm ho - ping you will know what I mean.
 til I do I'm tel - ling you so you'll un - der - stand. D.C. AL FINE

#2, 1974



1. Mich - elle, ma belle, these are words that go to - geth - er
 2. Mich - elle, ma belle, sont les mots qui vont tres bien en -

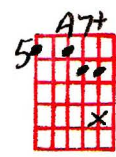


1. well, my Mi - chelle. FINE | 2. semble, tres bien en - semble. I

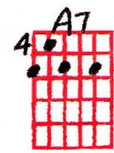
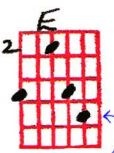
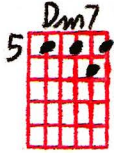
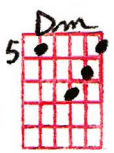


1. love you, I love you, I love you. That's all I want to
 2. need to, I need to, I need to, I need to make you
 3. want you, I want you, I want you, I think you know by

"Michelle" - Three Ted Greene Arrangements p.3



say. un - til I find a way _____ I will
 see Oh what you mean to me, _____ un -
 now. I'll get to you some - how, _____ un -

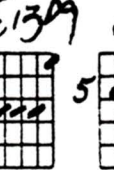
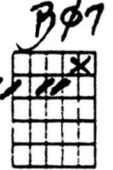


orig. note is F

D.C. AL FINE

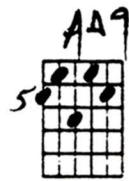
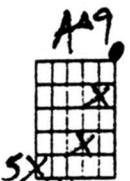
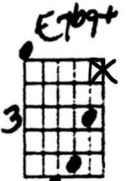
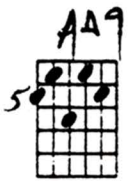
say the on - ly words I know that you'll un - der - stand.
 til I do I'm ho - ping you will know what I mean.
 til I do I'm tel - ling you so you'll un - der - stand.

#3, 1985

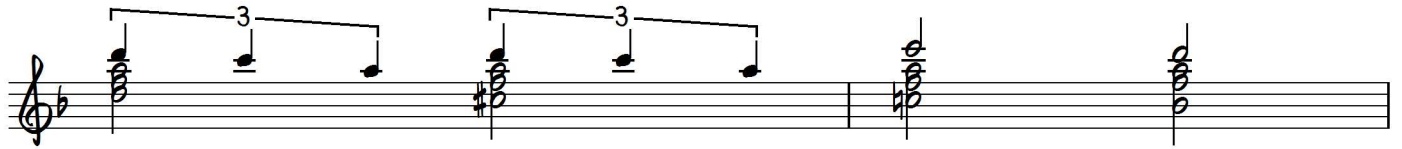
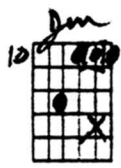


open E

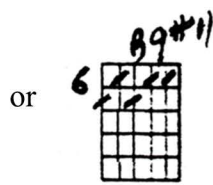
1. Mich - elle, ma belle, these are words that go to - geth - er
 2. Mich - elle, ma belle, sont les mots qui vont tres bien en -



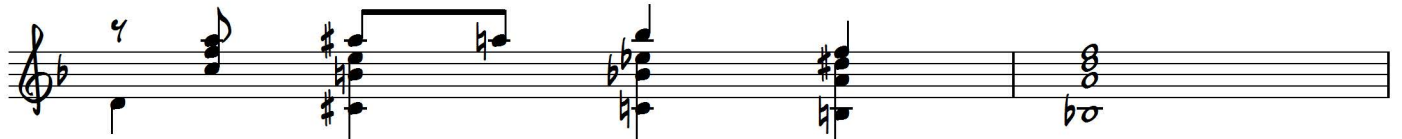
1. well, my Mi - chelle. FINE
 2. semble, tres bien en - semble. I



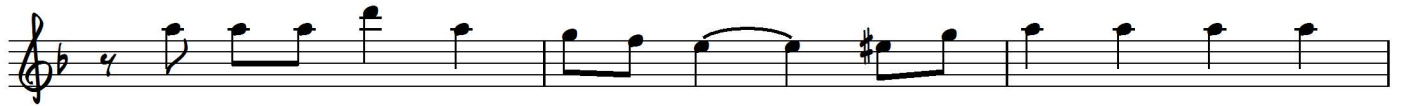
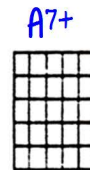
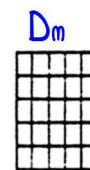
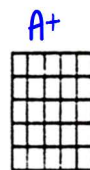
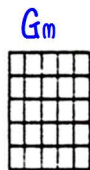
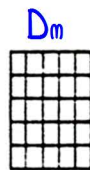
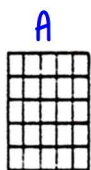
1. love you, I love you, I love you.
 2. need to, I need to, I need to,
 3. want you, I want you, I want you,



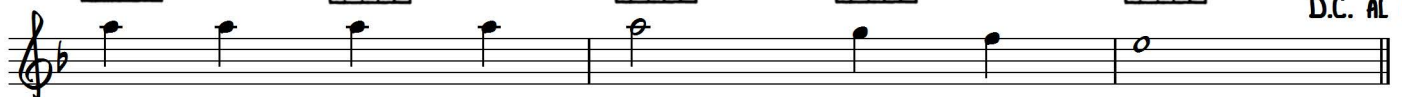
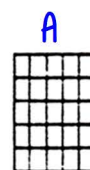
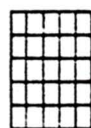
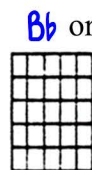
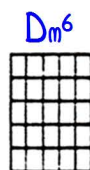
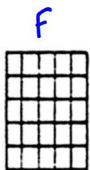
Ted's 1985 arrangement ends here.



That's all I want to say.
 I need to make you see
 I think you know by now.



un - til I find a way _____ I will say the on - ly
 Oh what you mean to me, _____ un - til I do I'm
 I'll get to you some - how, _____ un - til I do I'm



words I know that you'll un - der - stand.
 ho - ping you will know what I mean.
 tel - ling you so you'll un - der - stand.

D.C. AL FINE

MICHELLE (BASIC VERSION)

o = OPTIONAL NOTE
x = MELODIC ADDITION
~ = SUSTAIN (hold note)

CHORD MELODY STUDIES

MICHELLE

o = optional note
x = melodic addition
~ = sustain (hold down)

arr. © J. McNamee
4-7-74

1-29-85 PLAYING ORDER

MICHELLE

MOVE
MELODIES
UP 1
OCTAVE
FOR GUITAR

MICHELLE

Handwritten musical score for "MICHELLE". The score is written on two staves. The first staff has a key signature of one flat (F major) and a common time signature. The second staff has a key signature of two flats (Bb major). Chords are written above the notes. The first staff includes a 'D' chord with a note marked 'or 2 sharps' and a 'Dm' chord with a triplet. The second staff includes a 'Cm' chord, an 'F7' chord, and a 'Bb' chord. The piece ends with a double bar line.

optional changes | D7 Gm7 | C7/6 | F6 Bm7b5 E7b9 | A7 E7b9 | A7