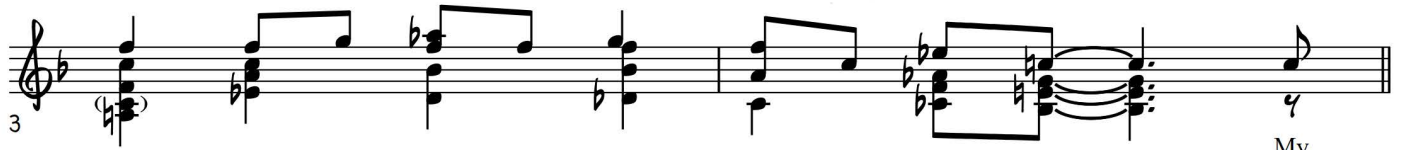
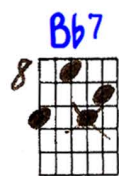
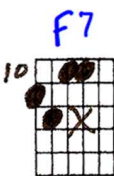
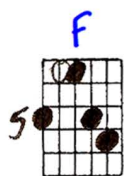
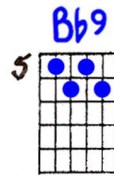
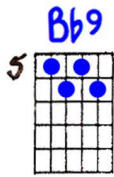


BLUES IN THE NIGHT

Ted Greene's "Gershwin-esque" Intro, 1989-04-03

(Rhythmic interpretation by Tim Lerch)

[Suggested alternate voicing:]



My

A

F

F7




ma - a done tol' me, when I was in knee pants, my ma-ma done tol' me, "Son, a

BLUES IN THE NIGHT

Harold Arlen / Johnny Mercer

A F F7




My ma - a done tol' me, when I was in knee pants, my ma-ma done tol' me, "Son, a
From Nat-chez to Mo-bile from Mem-phis to St. Joe, where - ev - er the four winds blow, I

Bb7 F7



6 wo-man will sweet talk and give you the big eye, but when the sweet talk-in's done, a
been in some big towns and heard me some big talk, but there is one thing I know

C7 G7 C7 F




10 wo-man's a two-face, a wor-ri-some thing who'll leave you to sing the blues in the night."

B F Bb7 F




14 Now the rain's a-fall - in', hear the train a call - in', whoo - ee, (my ma-ma done tol' me.)

Bb7 G7 C7 F



18 Hear dat lone-some whis - tle blow - in'cross the tres - tle, whoo - ee, (my ma-ma done tol' me.) A

C7 G7 C7 F



22 who-e-duh-who ee, Ol' click-e - ty clack's a ec ho-ing back the blues in the night. The eve-nin'

"Blues in the Night" - p.2

C Bb^9 $G\flat^7$ $C7b9$ $A\flat^7$ $G7b9$

26 breeze will start the trees to cry - in' and the moon will hide its light,
 Take my word, the mock - ing - bird will sing the sad - dest kind of song,

$D7b9$ ^{1.} $D\flat^7$ G^7 C^7 $G\flat^7$ $C7b9$

30 when you get the blues _____ in the night. _____
 he knows things are blues _____ in the night. _____

^{2.} $D\flat^7$ G^7 C^7 $D\flat$ $E\flat m^6$ C^7/E F^7 G^7 C^7

34 wrong _____ and she's right. _____ From D.S. AL CODA

F F^7 G^7 C^7 G^7 C^7 F

39 night. Hmm _____ My ma - ma was right, there blues _____ in the night.