

# APACHE

Playing order: ● × □ △  
○ = opt.

[Ted's arrangement was spontaneously written up during a private lesson in which the student requested that Ted show him this song. It is missing a few sections and the order is out of sequence according to the 1960 recording by The Shadows. This score shows the full version, with Ted's chords added when they fit. - Editor's note.]

Am D Am D

Am D Am

optional fill

5

Am D Am

9

5

Dm G Dm

13

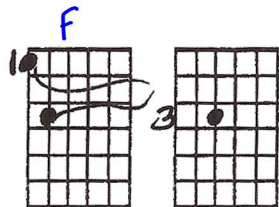
optional open string

Am D D/9 Am

17

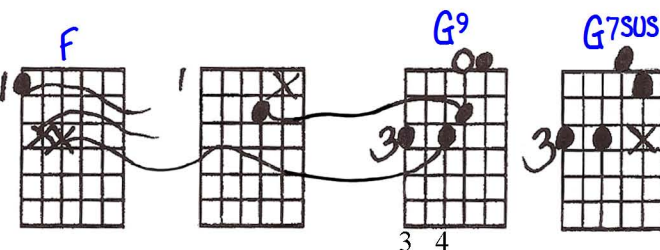
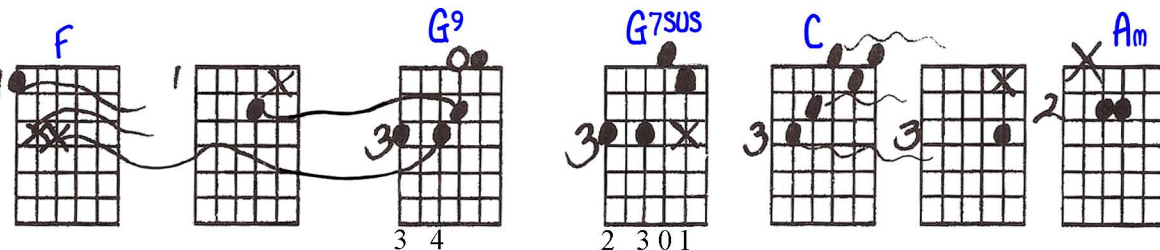
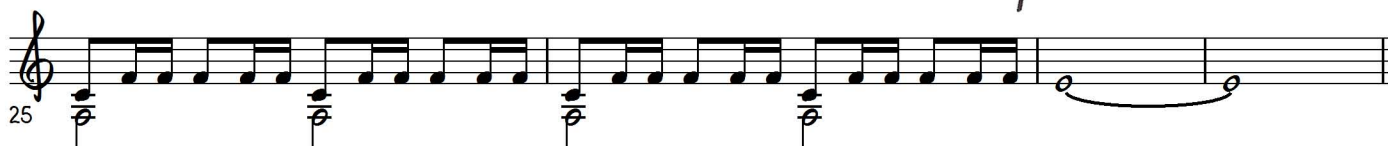
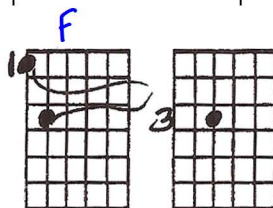
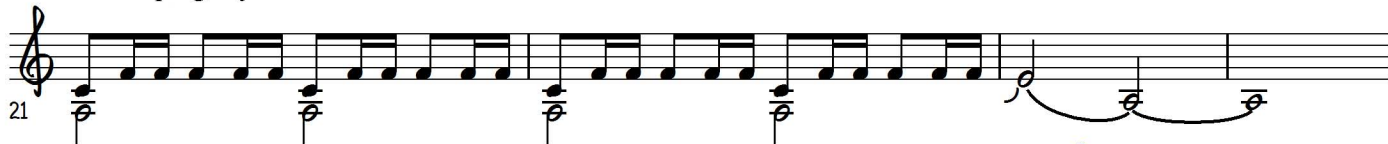
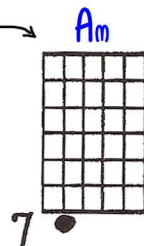
"Apache" - Ted Greene Arrangement p.2

----- 4 times -----

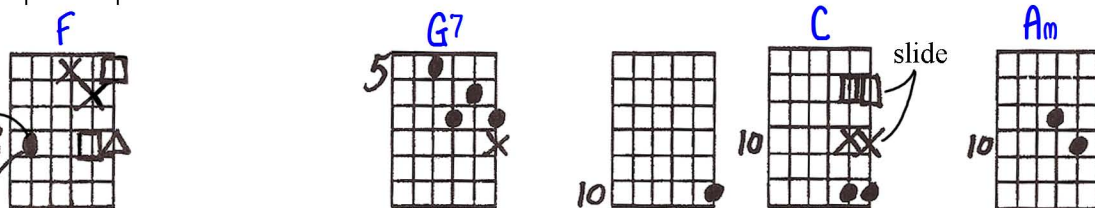


Galloping rhythm

Slide into, play, and slide down at least to the 3rd fret, and hit the open.

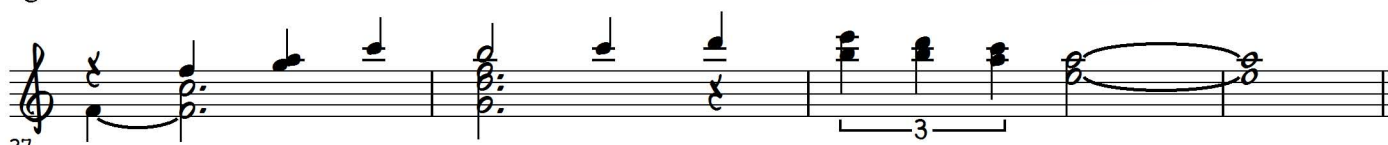


C Fill -----



Lead into this with a G note

Let ring





65

F G<sup>9</sup> G<sup>7</sup>SUS C Am

69

F G<sup>9</sup> G<sup>7</sup>SUS C Fill -----

73

Lead into this with a G note

Let ring

F G<sup>7</sup> C/9 Fill -----

77

F Am

81

F Am

85

Am D Repeat and fade -----

1-23-98

# APACHE

● then x then □ Δ

SLIDE INTO, PLAY 4 SLIDE DOWN + HIT THE OPEN *at least to the 3rd fret*

2 XX  
X

2 ● X

5 ●  
5 ●

5 ●  
5 ●

REPEAT

4 TIMES

GALLOPING RHYTHM

then Repeat this little section

OPTIONAL OPEN STRING

OPTIONAL FILL

5 ●

7 ●

5 ●

5 ●

7 ● X

5 ●

Repeat all or line 2 so far

7 ●

7 ●

7 ●

OPTIONAL SLIDE

SLIDE

3 ● ● X

3 ● ●

3 ●

2 ● ●

10 XX 10 ● ●

10 ●

10 ●

10 ●

10 ●

10 ●

if trying 4 to be ready prelude

LEADING

8 ●

8 ●

8 ●

8 ●

8 ● ●

8 ●

8 ●

8 ●

8 ●

8 ●

lead into this w/ a G note