

AIN'T MISBEHAVIN'

for Unaccompanied Guitar

Playing order: ● × □ △ ○ = opt.

Right hand "thumb" filling helps out in some places...

Out of time:
mellow, but
intense

Chord diagrams for measures 1-4:

- Measure 1: A (2nd fret, 4th string open)
- Measure 2: G13no3 - F#7 (3rd fret, 4th string open)
- Measure 3: B7sus (2nd fret, 4th string open)
- Measure 4: B9 (2nd fret, 4th string open)
- Measure 5: E13 (1st fret, 4th string open)

Musical notation for measures 1-4, showing a melodic line in the treble clef and a bass line in the bass clef. The key signature is two sharps (F# and C#).

1. No one to talk with, all by my - self,

Chord diagrams for measures 5-8:

- Measure 5: A (2nd fret, 4th string open)
- Measure 6: Am6 (2nd fret, 4th string open)
- Measure 7: C#7+ (4th fret, 4th string open)
- Measure 8: D6 (5th fret, 4th string open)
- Measure 9: G9#11 (3rd fret, 4th string open)

Musical notation for measures 5-8, continuing the melody and bass line.

no one to walk with, but I'm hap - py on the shelf.

Chord diagrams for measures 9-12:

- Measure 9: A (2nd fret, 4th string open)
- Measure 10: F#9 (2nd fret, 4th string open)
- Measure 11: B7 (4th fret, 4th string open)
- Measure 12: E9 OPEN (2nd fret, 4th string open)

Musical notation for measures 9-12, including the final chord of the phrase.

Ain't mis - be - hav - in' I'm sav - in' my love for

FILL

Chord diagrams for the FILL section:

- Measure 13: A (2nd fret, 4th string open) with note "OPEN" above and "or A on 6th string" written below.
- Measure 14: D7sus (5th fret, 4th string open)
- Measure 15: F#m7 (2nd fret, 4th string open)
- Measure 16: B9#11 (3rd fret, 4th string open)

Musical notation for the FILL section, showing a melodic line and a bass line.

you. —

Ain't Misbehavin' -- Ted Greene (key of A, Db, and Eb) - p.2

Db Db/9 D07 Ebm7 E07

9 I know for cer - tain, the one I love,

Db F7+ Gb6 Gb A7+

11 I'm thru with flirt - in', it's just you I'm think - in' of,

or "two-five" it

Db Gbm6 Bb7 Eb7 Eb9 E/9#11 Ab7 Db

13 ain't mis - be - hav - in I'm sav - in my love for

Db Gb Db7 Gbm Dbm Gbm6 Dbm Gbm6

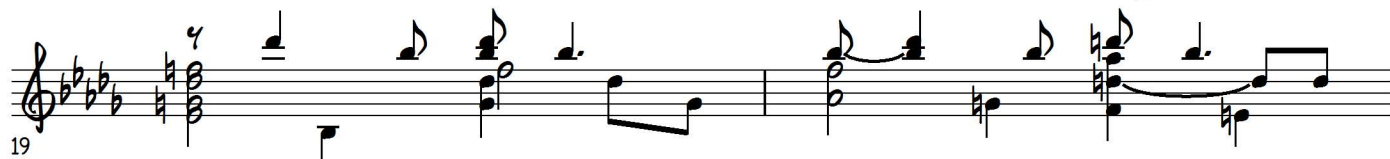
15 you.

Ain't Misbehavin' -- Ted Greene (key of A, Db, and Eb) - p.3

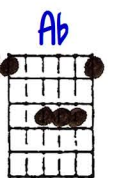
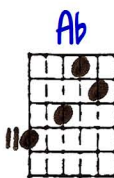
Bridge:
Begin slow
bluesy tempo



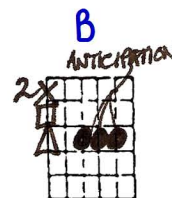
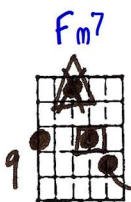
Like Jack Hor - ner in the cor - ner,



don't go no - where, what do I care?



Your kiss - es are worth wait - ing



for, be - - lieve me.

Ain't Misbehavin' -- Ted Greene (key of A, Db, and Eb) - p.4

E_b
E_b/9
C_m7
C7
F
F7+
B_b13
B_b13

25

I don't stay out late, don't care to go,

E_b
B_b⁺/E_b
E_b9_{no3}
E_b7_{b9}⁺
A_b6/9
G_b6/9
F9
F7_{b5}

27

I'm home a - bout eight, just me and my ra - di - o,

E_b
E_b/9
C⁹
F13
B_b13_{no3}
open E⁹#11

29

ain't mis - be - hav - in' I'm sav - in my love for you_

Db13_{no3}

ANTIC.

To new key
or momentary false endings
...over to the new key of C if extending.

31

OUT OF TIME:

KEY of A

AIN'T MISBEHAVIN': for Unaccompanied Guitar

Mellow but intense

Rt. Hand Thumb filling helps out in some places.....

©3-28-91
Jed Green

OPEN or A on 6th str.

KEY of D

or two frets

synthesizer

begin tempo

BRIDGE:

ANTICIPATION

OPEN

ANTICIPATION

KEY of C

anticipation

anticip

to monkey or momentary help... over to the key of C and... if extending.