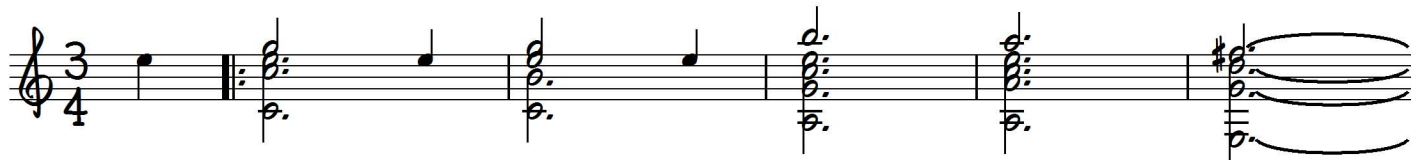
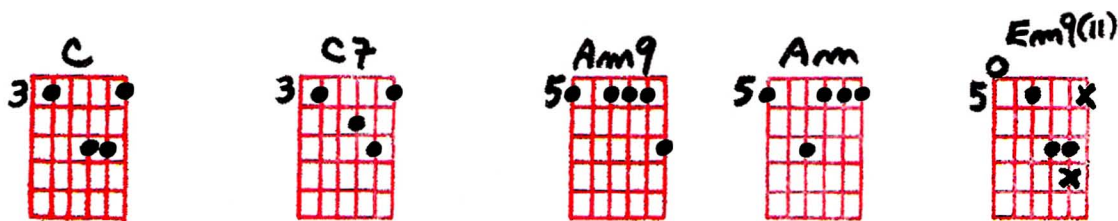


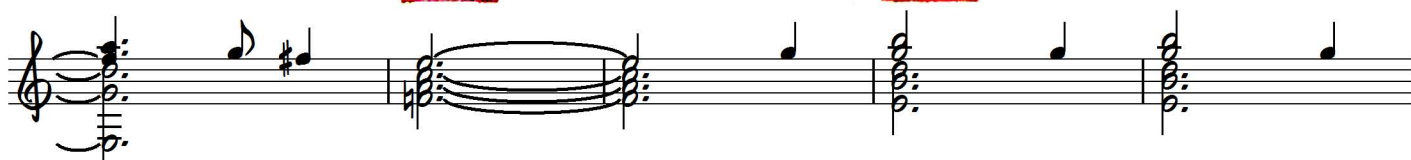
A PATCH OF BLUE

9-12-74
arr. ©
Ted Greene

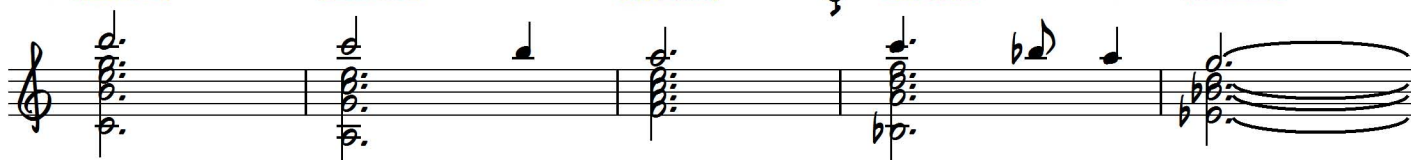
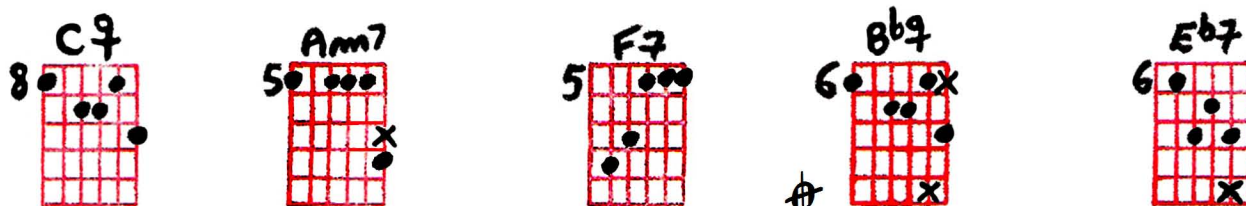
[You need to add the melodic additions to the chords, for most of them are not included.]



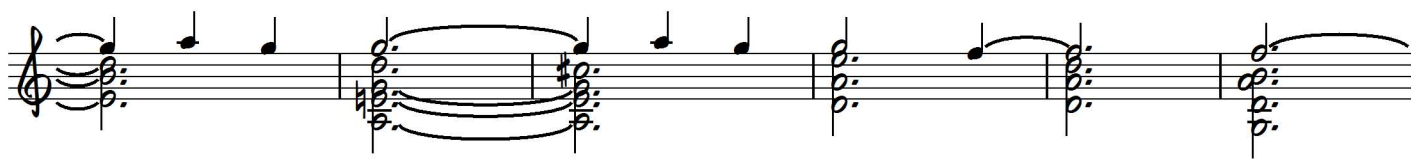
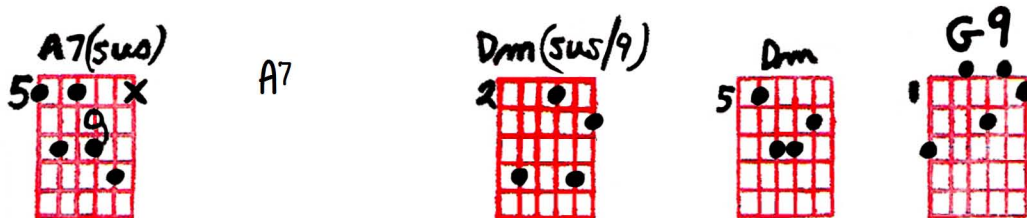
1. A storm will rise from no where! Why?
2. And deep in ev-'ry heart are dreams



No one knows why. The small - est blade of
ach - ing to fly. to find a patch of



grass, blue crushed in to the earth, sky, looks to the sky.



"I'm still here!" is it say - ing? Or

A Patch of Blue - Ted Greene Arrangement (p.2)

Handwritten guitar chord diagrams for the first system:

- G7**: 3rd fret, 2nd string, 3rd fret, 4th string, 2nd fret, 5th string, 3rd fret, 6th string. X on 1st and 6th strings.
- C5uo**: 3rd fret, 2nd string, 3rd fret, 4th string, 2nd fret, 5th string, 3rd fret, 6th string. X on 1st and 6th strings.
- C**: Open strings.
- B11**: 5th fret, 2nd string, 5th fret, 4th string, 4th fret, 5th string, 5th fret, 6th string. X on 1st and 6th strings.
- E7**: 5th fret, 2nd string, 5th fret, 4th string, 4th fret, 5th string, 5th fret, 6th string. X on 1st and 6th strings.

Musical notation for the first system, including lyrics: "is it pray - ing for a world with - out light - ning and".

Handwritten guitar chord diagrams for the second system:

- A7+**: 5th fret, 2nd string, 5th fret, 4th string, 4th fret, 5th string, 5th fret, 6th string. X on 1st and 6th strings.
- Dm9**: 3rd fret, 2nd string, 3rd fret, 4th string, 2nd fret, 5th string, 3rd fret, 6th string. X on 1st and 6th strings.
- Dm7**: 3rd fret, 2nd string, 3rd fret, 4th string, 2nd fret, 5th string, 3rd fret, 6th string. X on 1st and 6th strings.
- Dm9b5**: 3rd fret, 2nd string, 3rd fret, 4th string, 2nd fret, 5th string, 3rd fret, 6th string. X on 1st and 6th strings.
- G7**: 3rd fret, 2nd string, 3rd fret, 4th string, 2nd fret, 5th string, 3rd fret, 6th string. X on 1st and 6th strings.

Musical notation for the second system, including lyrics: "thun - der! Where's that blue sky? Does it won - der? 2. And".

D.C. al Coda

Handwritten guitar chord diagrams for the third system:

- F**: 8th fret, 2nd string, 8th fret, 4th string, 7th fret, 5th string, 8th fret, 6th string. X on 1st and 6th strings.
- Dm7**: 5th fret, 2nd string, 5th fret, 4th string, 4th fret, 5th string, 5th fret, 6th string. X on 1st and 6th strings.
- G9**: 3rd fret, 2nd string, 3rd fret, 4th string, 2nd fret, 5th string, 3rd fret, 6th string. X on 1st and 6th strings.

Musical notation for the third system, including lyrics: "No one knows where, no one knows when,".

Handwritten guitar chord diagrams for the fourth system:

- G7**: 9th fret, 2nd string, 9th fret, 4th string, 8th fret, 5th string, 9th fret, 6th string. X on 1st and 6th strings.
- C7**: 8th fret, 2nd string, 8th fret, 4th string, 7th fret, 5th string, 8th fret, 6th string. X on 1st and 6th strings.

Handwritten notes in blue: (F G7)

Musical notation for the fourth system, including lyrics: "no one knows why...".

arr. ©
Ted Greene
9-12-74

A PATCH OF BLUE

Chord diagrams for "A Patch of Blue":

Row 1: C, C7, Am9, Am, Em9(n), F7, Em7, C9, Am7, F7, Bb9, Eb7, A7(sus4)

Row 2: Dm(sus4), Dm, G9, G7, Csus4, B11, E7, A7+, Dm9, Dm7, Dm9b5, G7

Row 3: F, Dm7, G9, G7, C7

D.C. AL CODA