

Gershwinesque, V-9ish Diatonic (and expanded diatonic) Major Key

Ted Greene
2001-02-09

Triad & Melody Far Away in Contrary Motion, Melody Tones Chosen
for their ability to create a plaintive line, a yearning terrific feeling.

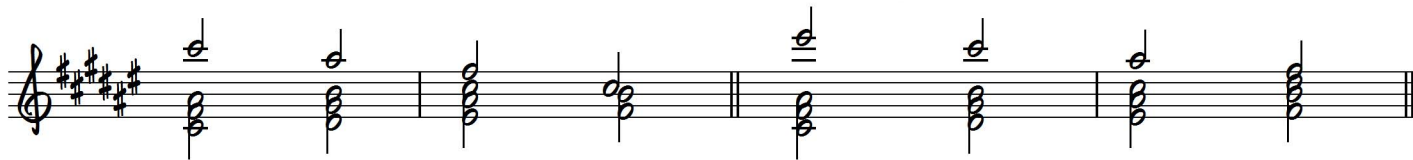
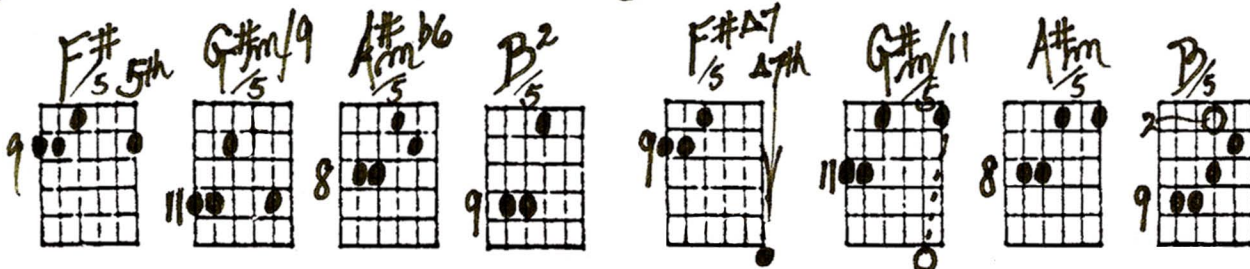
d6 (little d) = a diatonic 6th

①

②

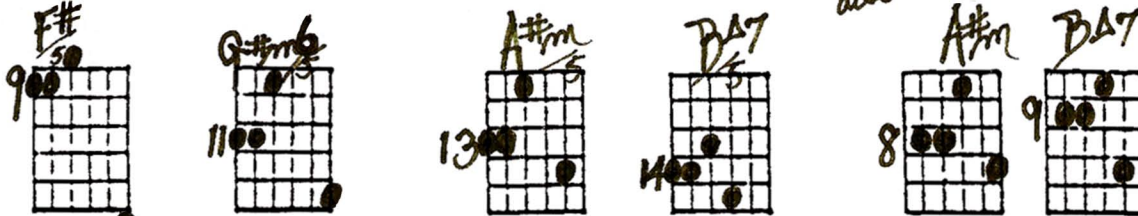
Also on next string set

Key of F#



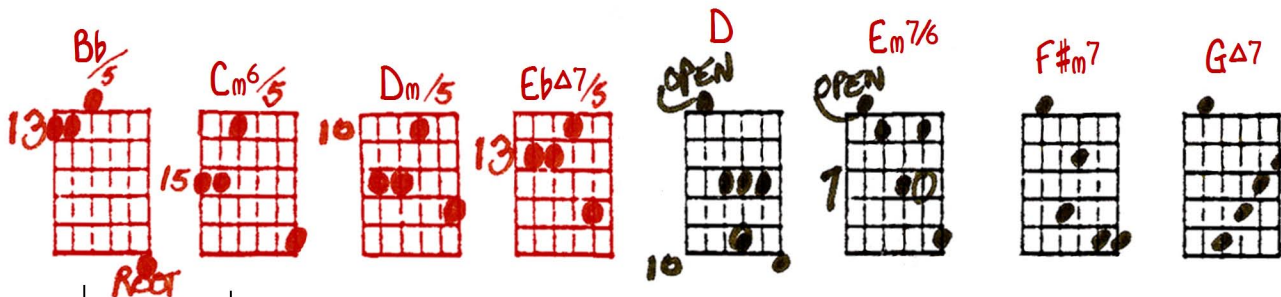
③

also



Now, last example in high Bb, then

I ii7 iii7 IV^Δ7
all over K5*



[“K5” probably means: from the “Key (of D major), the “5th” scale degree, since all four of these chords (I, ii7, iii7, IVmaj7) are over this pedal point bass note (the open A).]

Early Fri.
2-9-01
Key of F#

Gershwin-esque, V-9-ish DIAT. + EXP. DIAT. KEY: ① TRIAD + MELODY FAR AWAY
in Contrary Motion,
Melody Jones chosen
for their ability
to be creative &
plaintive line, a
yearning, a
terrible
feeling

little
d₆ = ^ad₆ = diatonic 6th

① F#₅ 5th G#m/9 A#m₅ b6 B₅² | ② F#A7₅ 4th G#m/11 A#m₅ B₅ | ③ F#m₅ G#m₅

A#m₅ B₅A7 also A#m B₅A7 | Last IV high B then 10 | I II III IV A7 | all over K5