

On many of the chord types, Ted provided only the first of the four inversions. Using Ted's "Systematic Inversions" technique, the other three were added in blue.

V-5

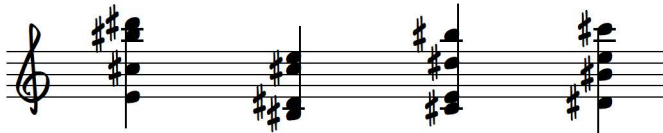
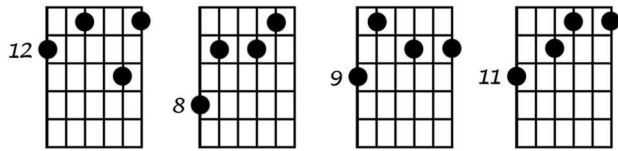
Ted Greene
2000-08-22, 24

The 43 Four-Note Chord Types (V-2 with Tenor Down One Octave)

The chord diagrams are suggestions; other forms may also be possible.

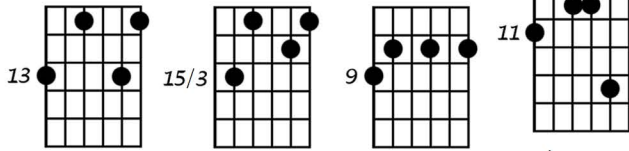
① C/B#, Db/C#, D#, E

C#mΔ9



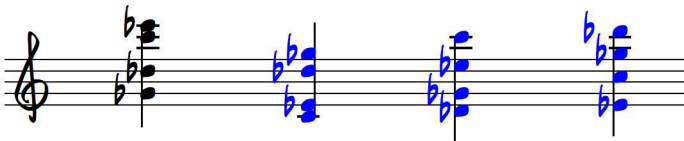
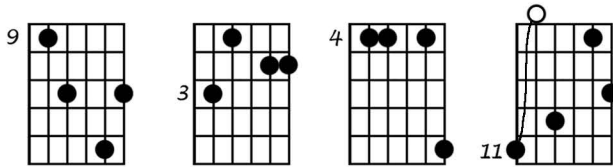
② C, Db, Eb, F

DbΔ9



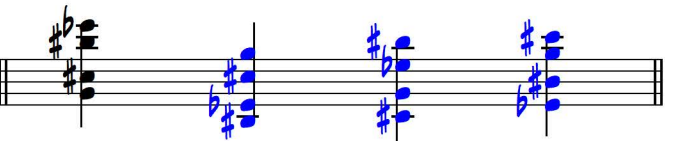
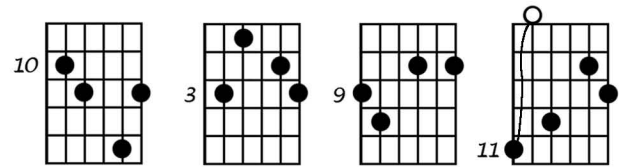
③ C, Db, Eb, Gb

Gb6#11 (Ab7/11)



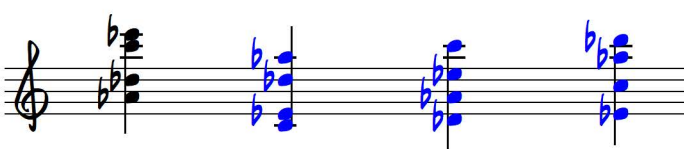
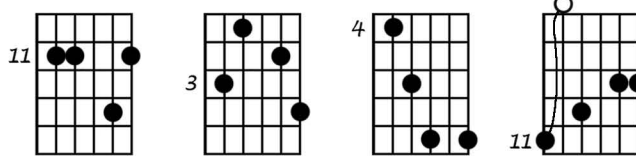
④ C/B#, Db/C#, Eb, G

A7#9b5 (Eb7/6, Eb13no9)



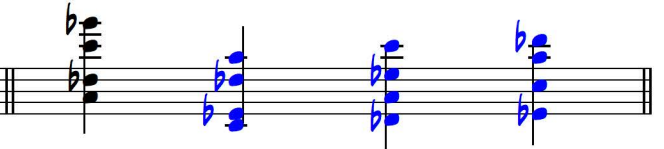
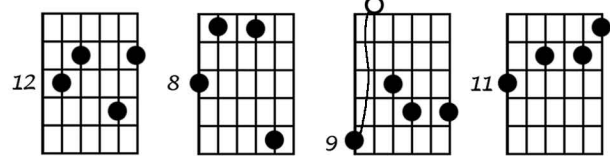
⑤ C, Db, Eb, Ab

DbΔ9no3



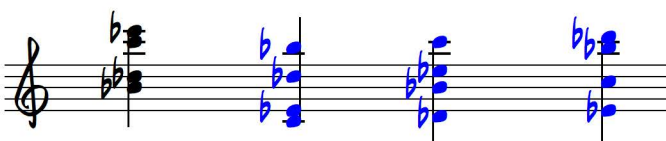
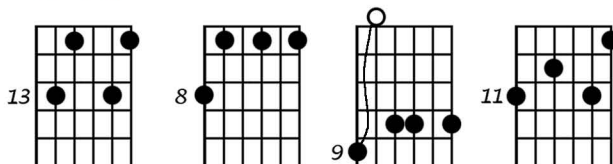
⑥ C, Db, Eb, A

Ab(7)b9/11



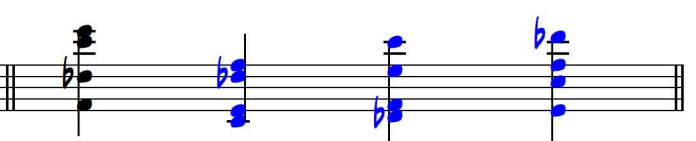
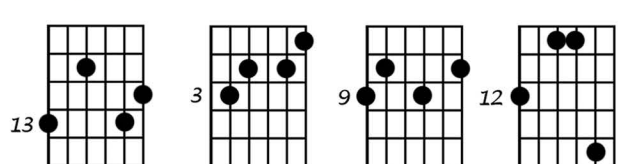
⑦ C, Db, Eb, Bb

Bbm/9/11



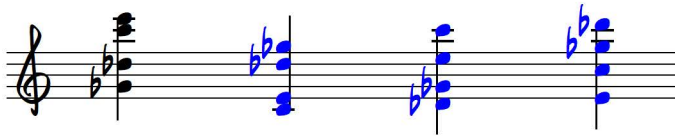
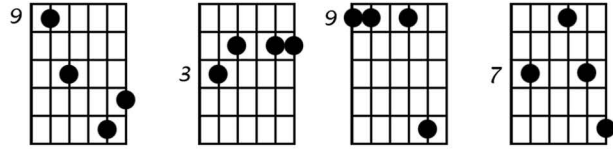
⑧ C, Db, E, F

DbΔ7#9



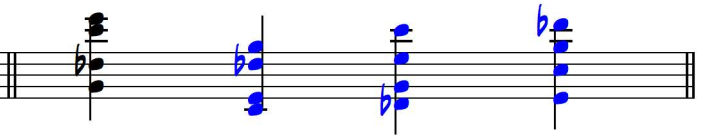
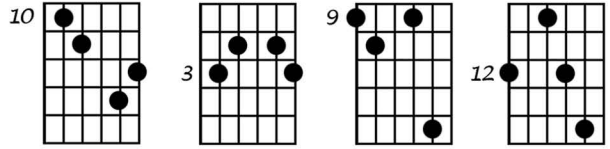
9 C, Db, E/Fb, Gb

Gb7no3#11



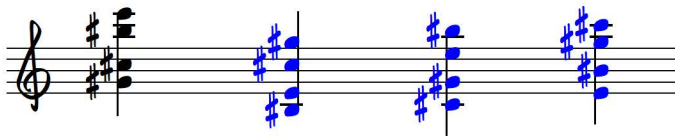
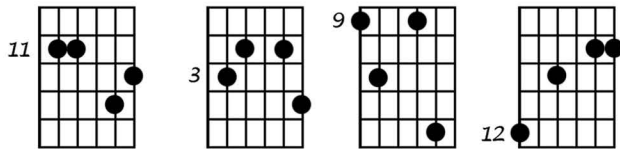
10 C, Db, E, G

Eb13b9



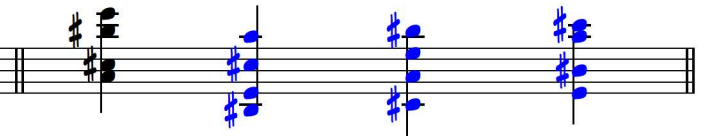
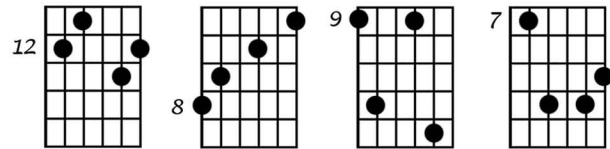
11 C/B#, Db/C#, E, Ab/G#

C#mΔ7



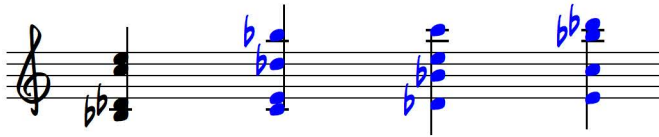
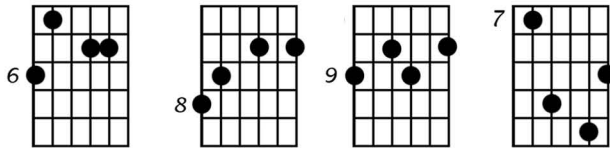
12 C/B#, Db/C#, E, A

A(7)#9



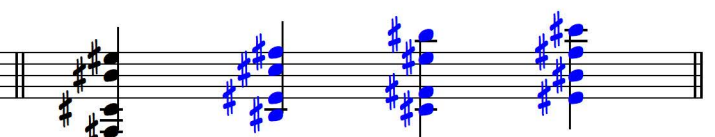
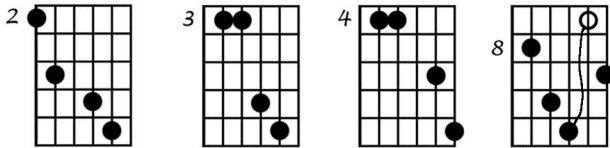
13 C, Db, E, Bb

C7b9



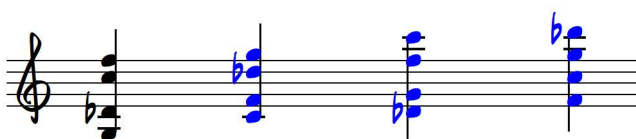
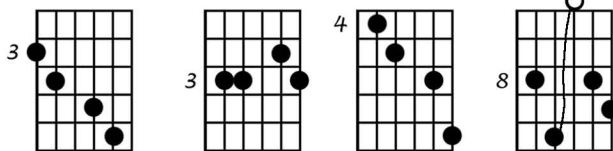
14 C/B#, Db/C#, F/E#, Gb/F#

F#Δ7no3#11



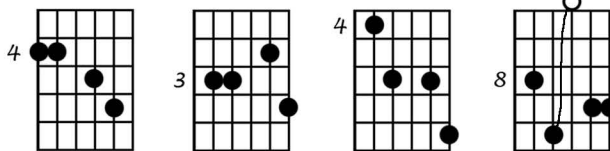
15 C, Db, F, G

Eb13



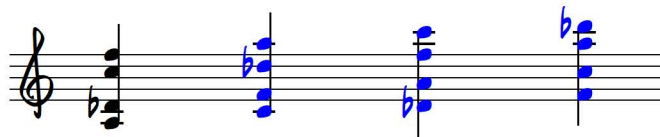
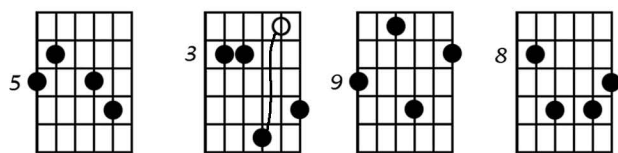
16 C, Db, F, Ab

DbΔ7



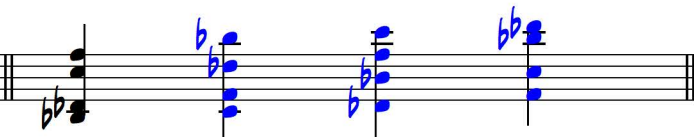
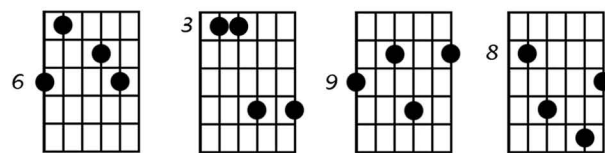
17 C, Db, F, A

Bbm Δ 9



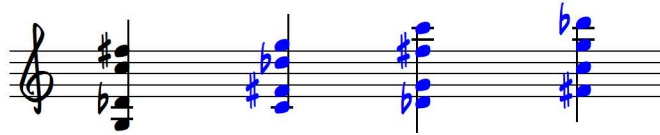
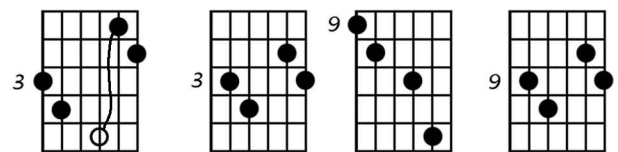
18 C, Db, F, Bb

Bbm/9



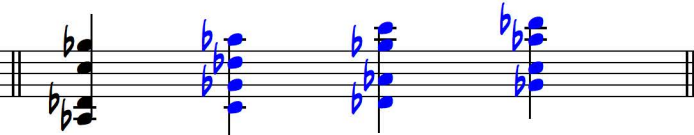
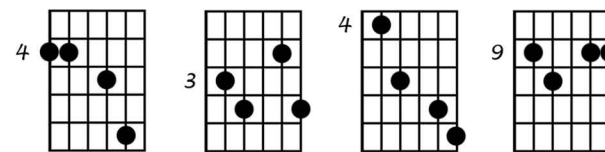
19 C, Db, F#/Gb, G

Eb13#9



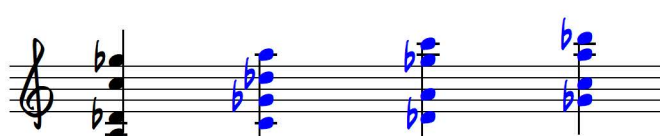
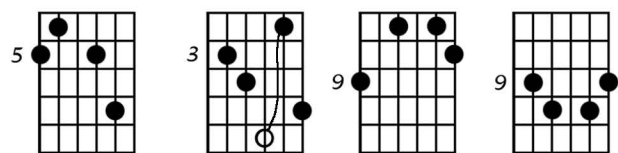
20 C, Db, Gb, Ab

Ab7/D_b



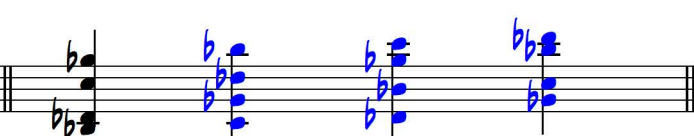
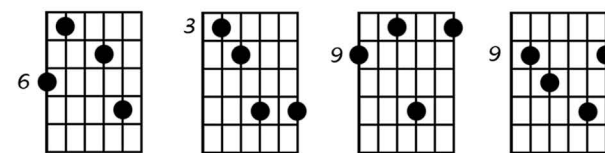
21 C, Db, Gb, A/Bbb

Ab7b⁹/D_b



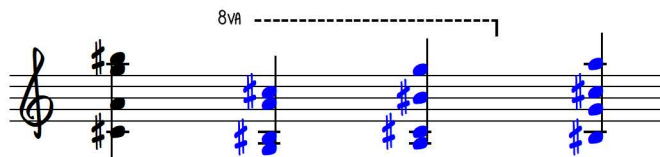
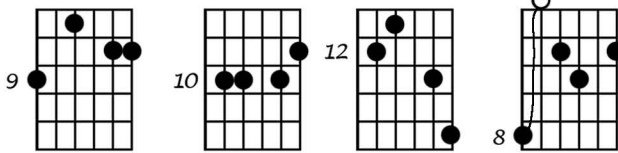
22 C, Db, Gb, Bb

Ab⁹/D_b



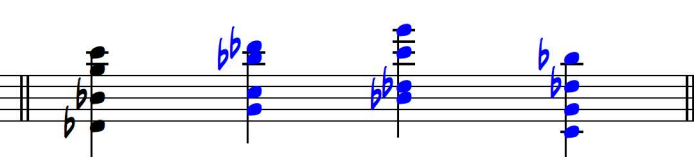
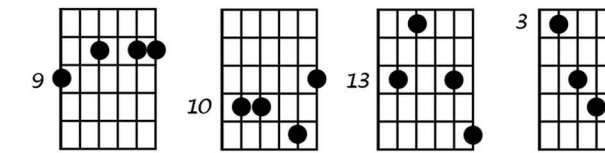
23 B#, C#, G, A

A7#9



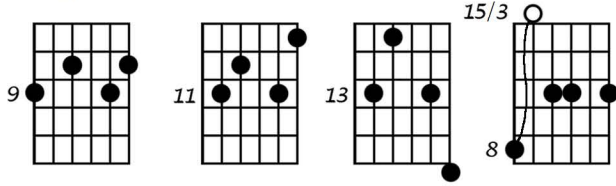
24 C, Db, G, Bb

Bbm⁶/9



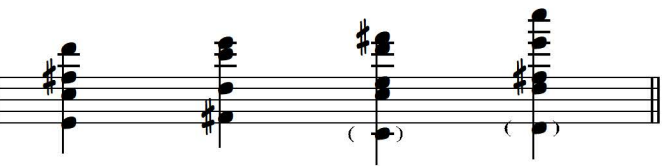
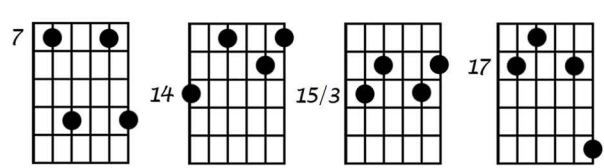
25 C, Db, Ab, Bb

Bbm⁹



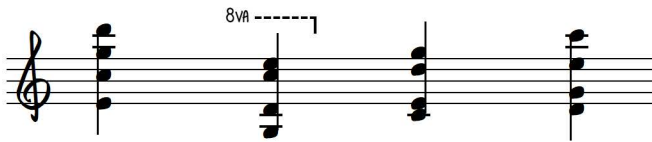
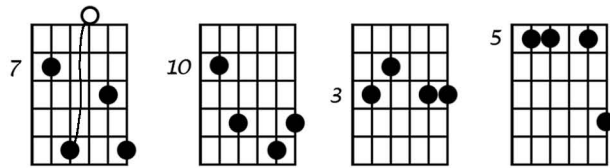
26 C, D, E, F#

D⁹



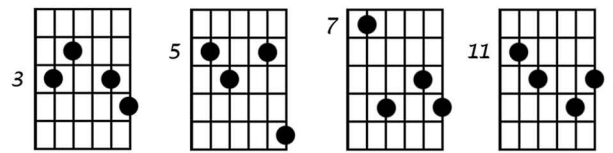
27 C, D, E, G

C/9



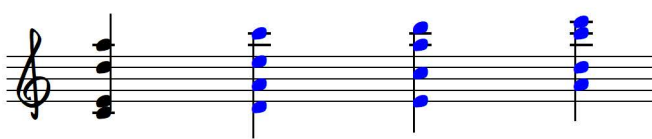
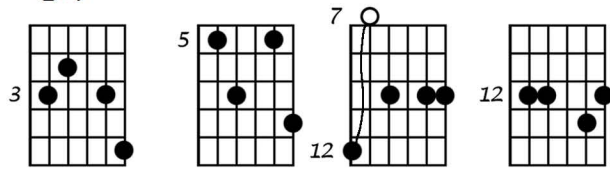
28 C/B#, D, E, G#

E7#5



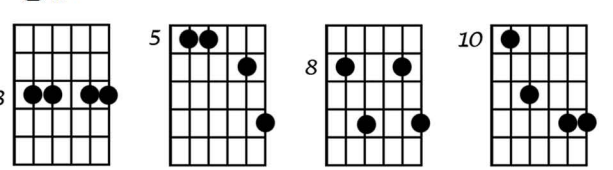
29 C, D, E, A

C%9



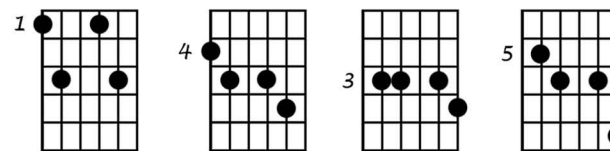
30 C, D, F, G

Dm7/11



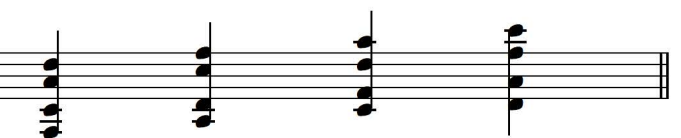
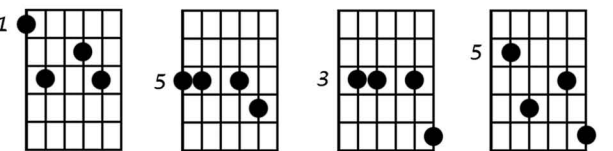
31 C, D, F, Ab

Dm7b5



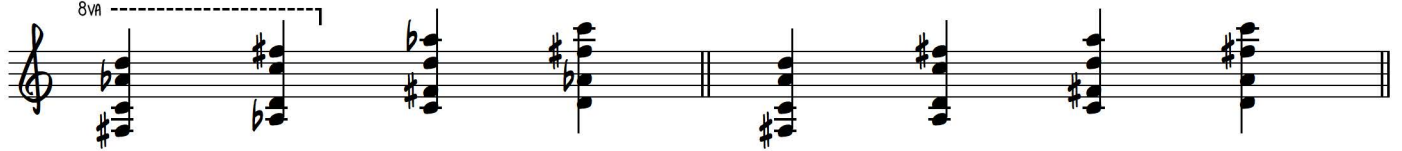
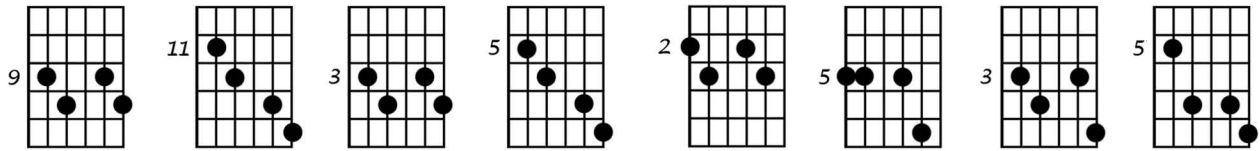
32 C, D, F, A

F6



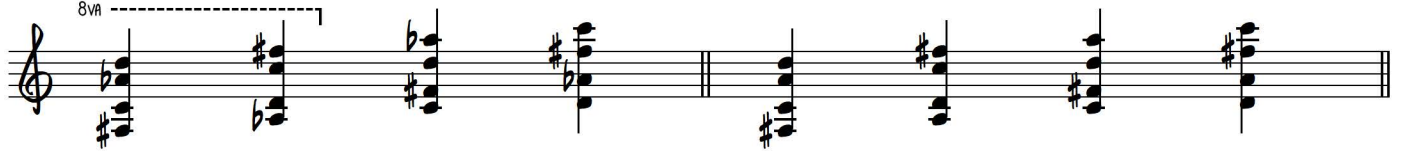
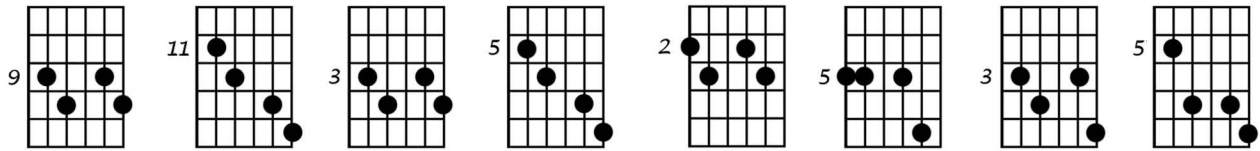
33 C, D, F#, Ab

D7b5



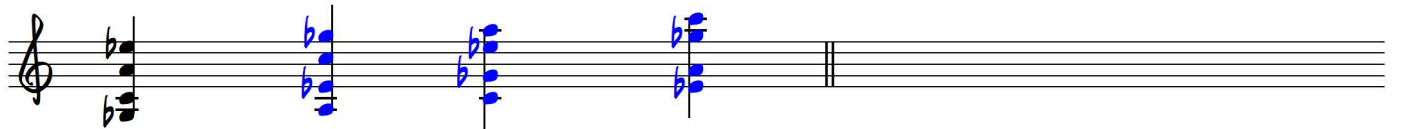
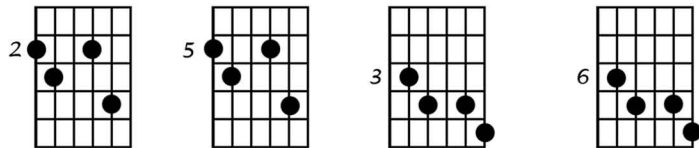
34 C, D, F#, A

D7



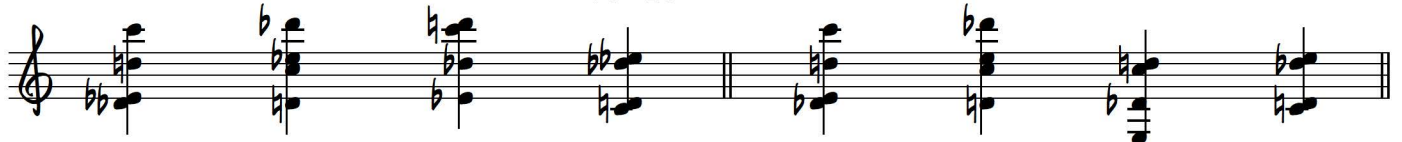
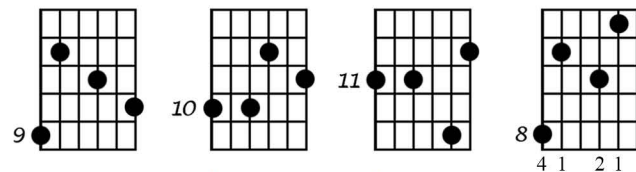
35 C, Eb, Gb, A

C°7

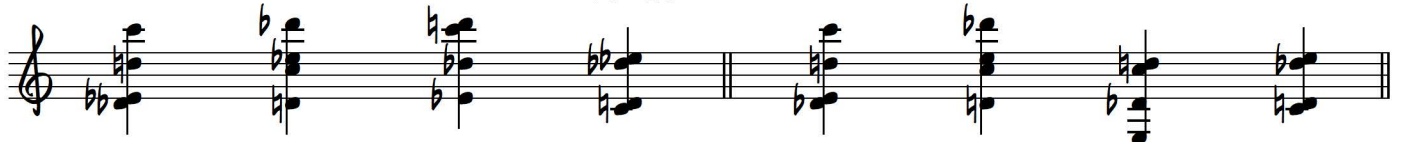
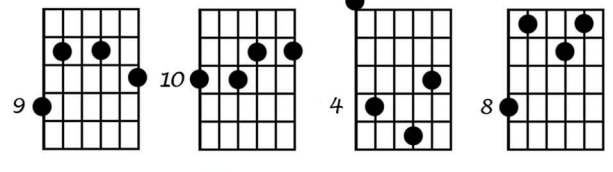


And the Dissonant Ones (2000-08-24, Thursday night):

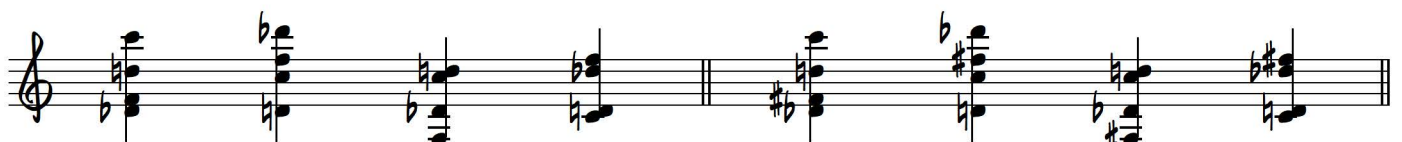
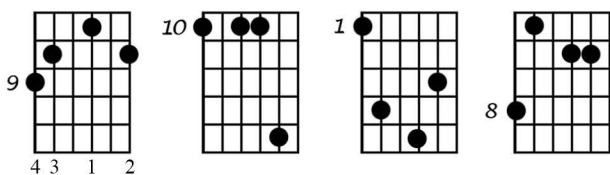
36 C, Db, D, Eb



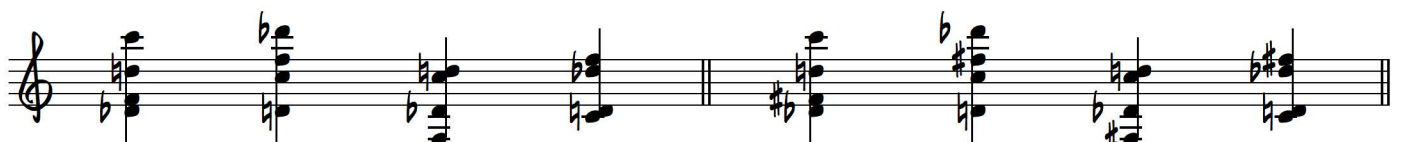
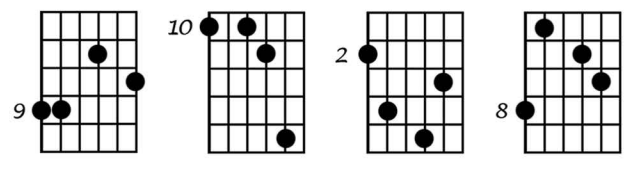
37 C, Db, D, E



38 C, Db, D, F

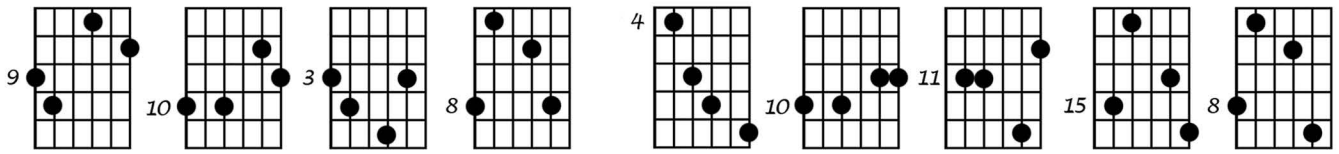


39 C, Db, D, F#



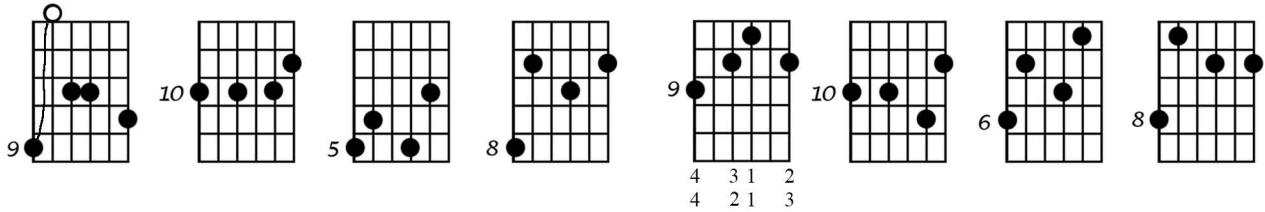
40 C, Db, D, G

41 C, Db, D, Ab



42 C, Db, D, A

43 C, Db, D, Bb



8-22-00

V-5 (V-2 with tenor down one octave)

Handwritten musical score for voice and piano, featuring 38 numbered chords and melodic lines. The score is written on a grand staff with a treble clef and a bass clef. The chords are numbered 1 through 38 and include various extensions and alterations.

Chord List:

- 1. C#m7
- 2. D#m9
- 3. Gb6#11 (Ab7#11)
- 4. A7#9b5 (Eb7#9, 13no)
- 5. D#m9
- 6. Ab7#9
- 7. D#m9/11
- 8. D#m7#9
- 9. Gb7#11 no3
- 10. Eb13b9
- 11. C#m7
- 12. Ac7#9
- 13. C#m9/wk
- 14. F#m7#11 no3
- 15. Eb13
- 16. D#m7 + b9
- 17. Bbm7
- 18. Bbm9
- 19. Eb13#9
- 20. Ab7/bb
- 21. D#m9
- 22. D#m9
- 23. A7#9
- 24. Bbm9/b9
- 25. D#m9/b9
- 26. D#m9
- 27. C#9
- 28. E7#5
- 29. C#6/9
- 30. D#m7/11
- 31. D#m7b5
- 32. F6
- 33. D7b5
- 34. D7
- 35. C#7
- 36. D#m7
- 37. E7
- 38. D#m7

Melodic Lines:

- Upper Voice (Treble Clef):** Contains melodic lines for the voice part, often starting with a whole note chord and followed by eighth or sixteenth notes.
- Lower Voice (Bass Clef):** Contains melodic lines for the tenor part, often starting with a whole note chord and followed by eighth or sixteenth notes.

Annotations:

- "8th Basses" is written above the first few chords.
- "C#m9/wk" is written next to chord 13.
- "C#m9/b9" is written next to chord 25.
- "8 DISSONANT ONES (8, 24, 27, 30, 31, 32, 33, 34, 35, 36, 37, 38)" is written across the bottom of the score.
- "C#m9/b9" is written next to chord 38.