

V-2 Top 4 Strings - Linear ii7-V7-I

2-to-1 moving soprano - 2 forms per chord change

Ted Greene
1985-04-15

Playing order: ● × □ △
○ = opt.

(melody: ascending on the ii)

Starting with ii7/13

1)

Chord diagrams: $B^{\flat}m6/11$, $B^{\flat}m7$, $E^{\flat}7^{\flat}9$, $E^{\flat}7^{\flat}9$, $A^{\flat}\Delta7$

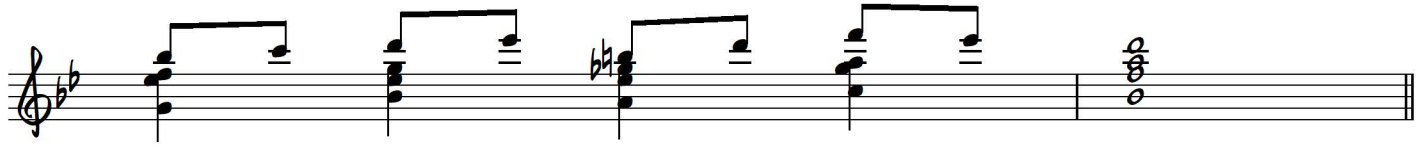
Chord diagrams: $A^m6/11$, A^m7 , $D7^{\#}9$, $D7^{\flat}9^{\flat}5$, $G9$

Starting with ii7/7

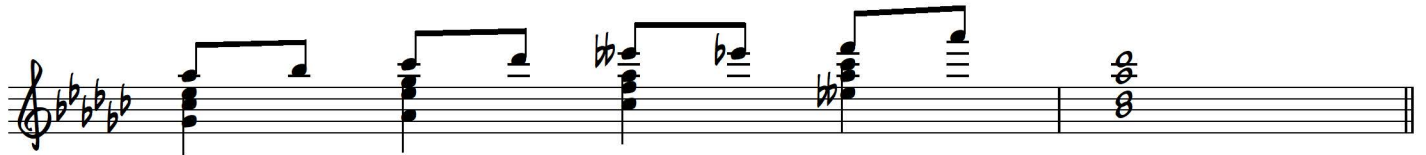
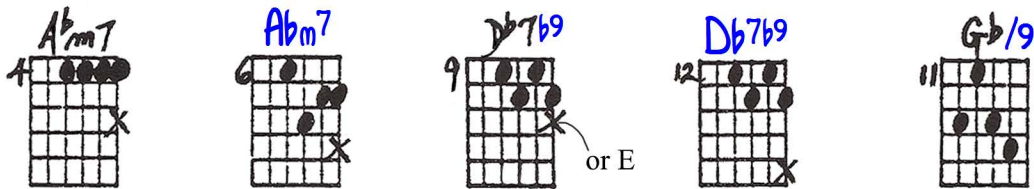
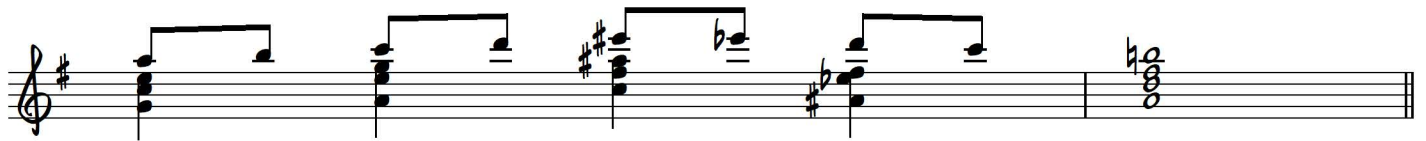
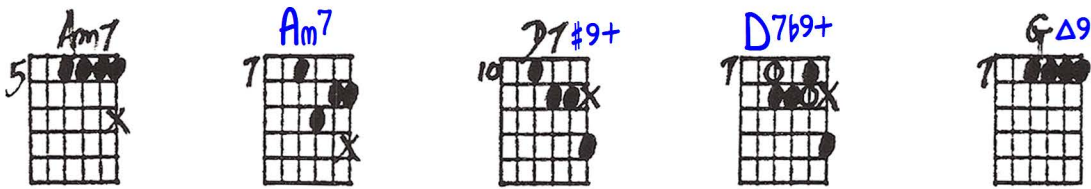
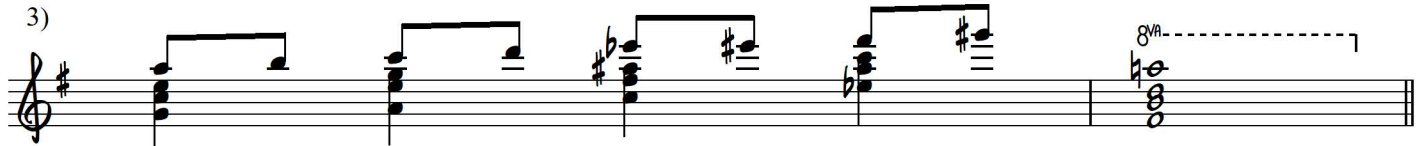
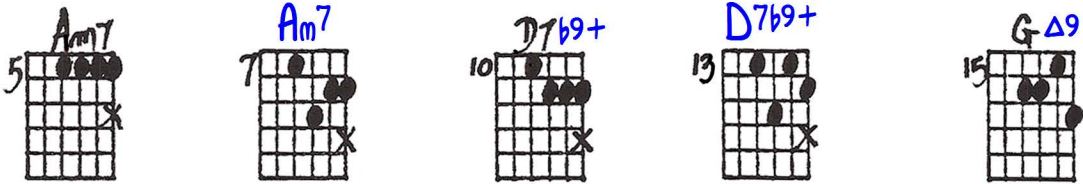
2)

Chord diagrams: $A^m7/11$, A^m9 , $D7^{\flat}9$, $D7^{\#}9$, $G9$

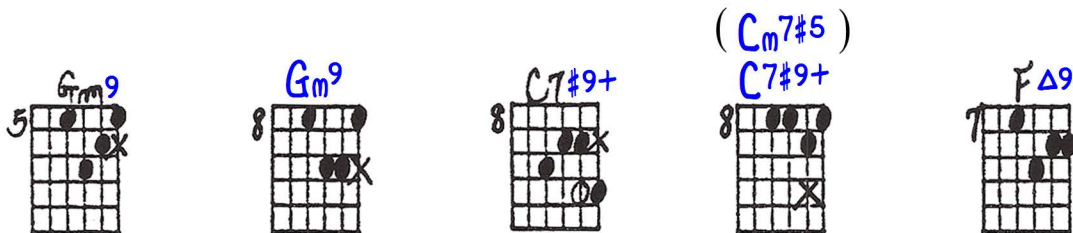
Chord diagrams: $C^m7/11$, C^m11 , $F7^{\flat}9^{\#}11$, $F7^{\flat}9$, $B^{\flat}\Delta7$



Starting with ii7/R

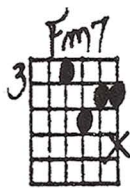
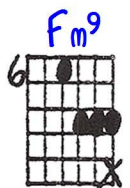





Starting with ii7/9

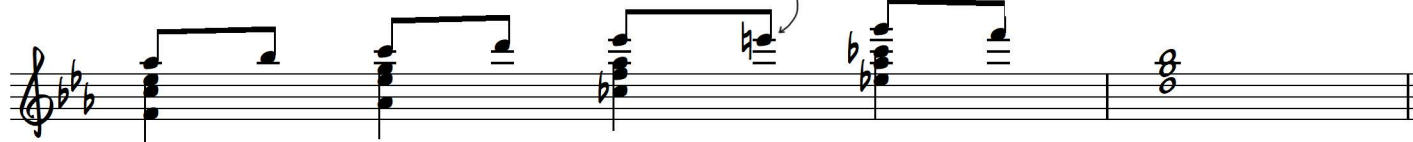


Starting with ii7/3
 5)

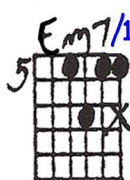
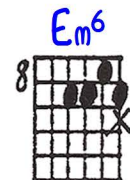
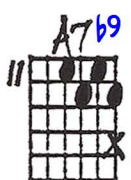


or use Fm9

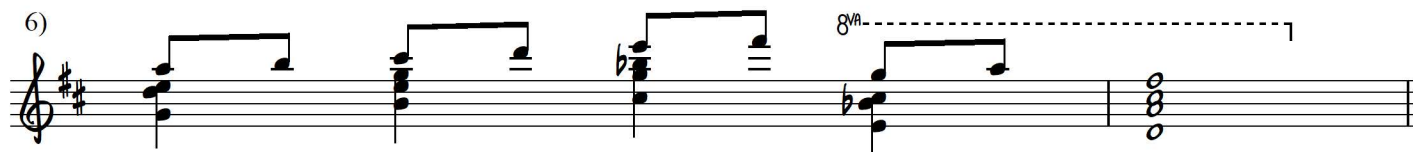






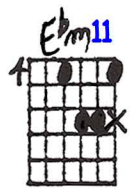

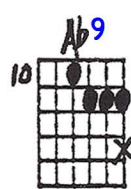
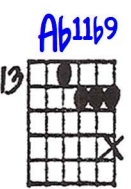

vibrato
for fullness

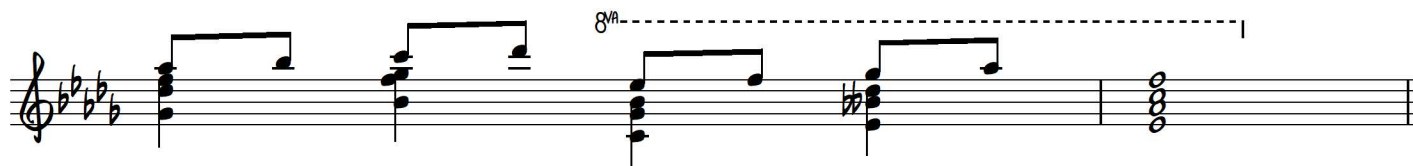


Starting
with ii7/11



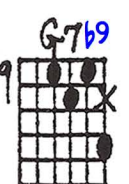

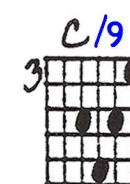






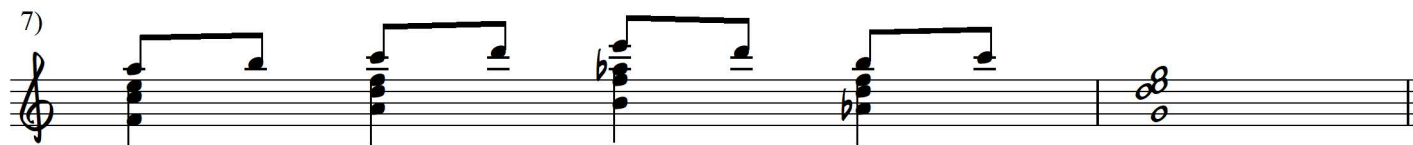
6) 


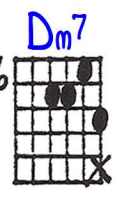
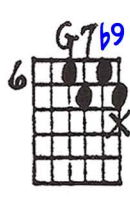
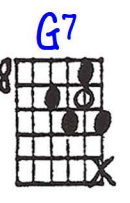
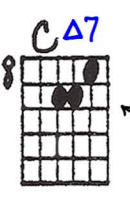









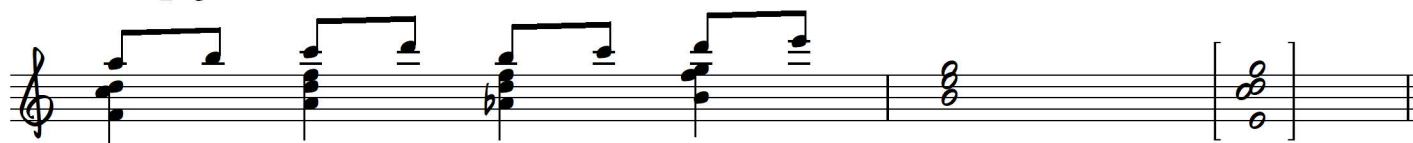
Starting
with ii7/5

7) 

especially
from V7b9



(III7 for I)

C#m7/11 C#m7 F#13 F#9 D#11 or: D#7/6

C#m7/11 C#m7 F#13b9 F#7b9 B6

C#m7 C#m7 F#7/6 F#7#9+ B/9

The "heads" and "tails" may be mixed.
 For kicks, try a dominant pedal where practical.

