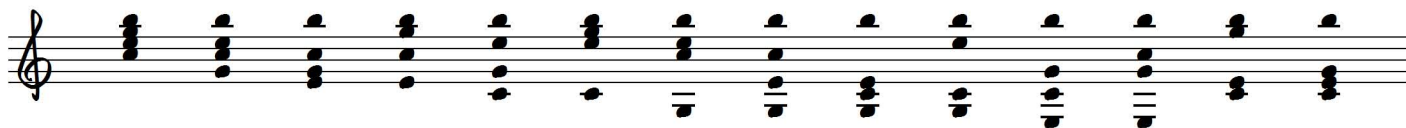


Ted Greene's V-System

Soprano Tour for the Seven Basic Qualities and their Systematic Inversions

C Δ 7 [7th on top]

V-1 V-2 V-3 V-4 V-5 V-6 V-7 V-8 V-9 V-10 V-11 V-12 V-13 V-14



C Δ 7 [Root on top]

V-1 V-2 V-3 V-4 V-5 V-6 V-7 V-8 V-9 V-10 V-11 V-12 V-13 V-14



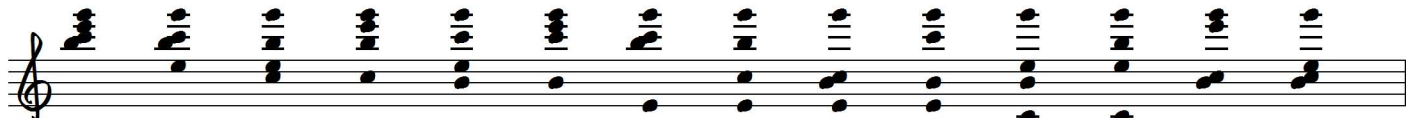
C Δ 7 [3rd on top]

V-1 V-2 V-3 V-4 V-5 V-6 V-7 V-8 V-9 V-10 V-11 V-12 V-13 V-14



C Δ 7 [5th on top]

V-1 V-2 V-3 V-4 V-5 V-6 V-7 V-8 V-9 V-10 V-11 V-12 V-13 V-14



C7 [b7th on top]

V-1 V-2 V-3 V-4 V-5 V-6 V-7 V-8 V-9 V-10 V-11 V-12 V-13 V-14

A musical staff in treble clef with a key signature of one flat (Bb). It displays 14 chord inversions of C7 with the flat seventh (Bb) on top. The chords are arranged from V-1 to V-14, with the root note moving down the scale in each successive inversion.

C7 [Root on top]

V-1 V-2 V-3 V-4 V-5 V-6 V-7 V-8 V-9 V-10 V-11 V-12 V-13 V-14

A musical staff in treble clef with a key signature of one flat (Bb). It displays 14 chord inversions of C7 with the root note (C) on top. The chords are arranged from V-1 to V-14, with the root note moving down the scale in each successive inversion.

C7 [3rd on top]

V-1 V-2 V-3 V-4 V-5 V-6 V-7 V-8 V-9 V-10 V-11 V-12 V-13 V-14

A musical staff in treble clef with a key signature of one flat (Bb). It displays 14 chord inversions of C7 with the third note (Eb) on top. The chords are arranged from V-1 to V-14, with the root note moving down the scale in each successive inversion.

C7 [5th on top]

V-1 V-2 V-3 V-4 V-5 V-6 V-7 V-8 V-9 V-10 V-11 V-12 V-13 V-14

A musical staff in treble clef with a key signature of one flat (Bb). It displays 14 chord inversions of C7 with the fifth note (G) on top. The chords are arranged from V-1 to V-14, with the root note moving down the scale in each successive inversion.

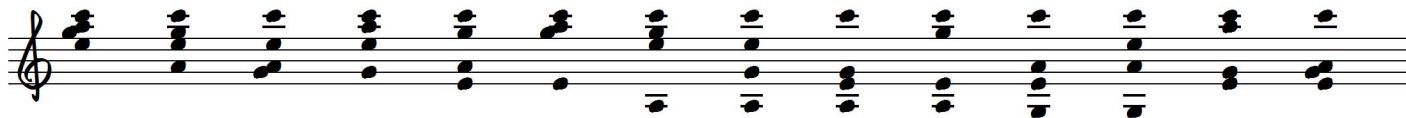
C⁶ [6th on top]

V-1 V-2 V-3 V-4 V-5 V-6 V-7 V-8 V-9 V-10 V-11 V-12 V-13 V-14



C⁶ [Root on top]

V-1 V-2 V-3 V-4 V-5 V-6 V-7 V-8 V-9 V-10 V-11 V-12 V-13 V-14



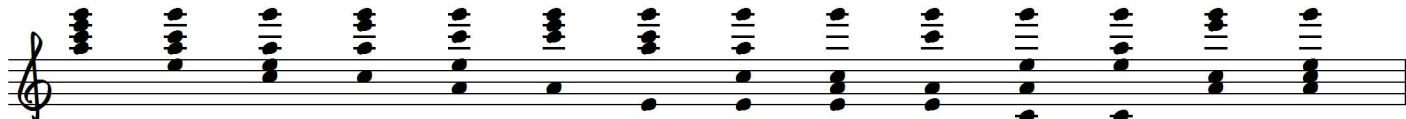
C⁶ [3rd on top]

V-1 V-2 V-3 V-4 V-5 V-6 V-7 V-8 V-9 V-10 V-11 V-12 V-13 V-14



C⁶ [5th on top]

V-1 V-2 V-3 V-4 V-5 V-6 V-7 V-8 V-9 V-10 V-11 V-12 V-13 V-14



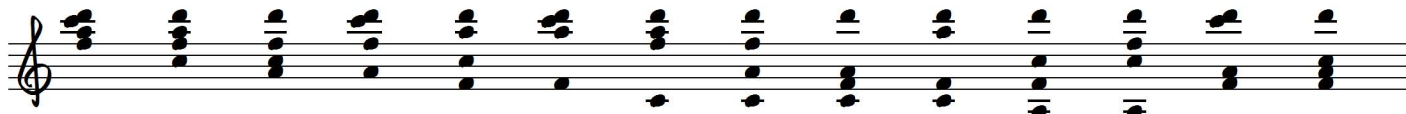
D_m7 [b7th on top]

V-1 V-2 V-3 V-4 V-5 V-6 V-7 V-8 V-9 V-10 V-11 V-12 V-13 V-14



D_m7 [Root on top]

V-1 V-2 V-3 V-4 V-5 V-6 V-7 V-8 V-9 V-10 V-11 V-12 V-13 V-14



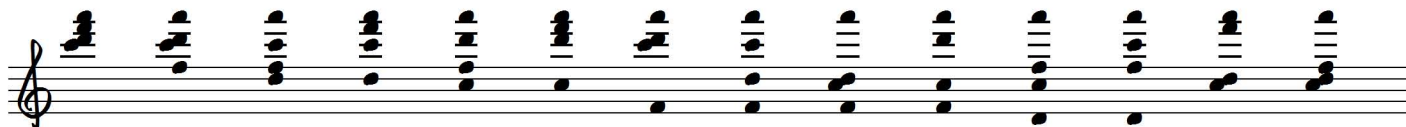
D_m7 [b3rd on top]

V-1 V-2 V-3 V-4 V-5 V-6 V-7 V-8 V-9 V-10 V-11 V-12 V-13 V-14



D_m7 [5th on top]

V-1 V-2 V-3 V-4 V-5 V-6 V-7 V-8 V-9 V-10 V-11 V-12 V-13 V-14



D_m7^b5 [b7th on top]

V-1 V-2 V-3 V-4 V-5 V-6 V-7 V-8 V-9 V-10 V-11 V-12 V-13 V-14

A musical staff in treble clef with a key signature of one flat (Bb). It displays 14 systematic inversions of the D_m7^b5 chord. The notes are arranged in a sequence of 14 groups, each containing the notes of the chord in a different vertical order. The notes are: D (root), F (b3rd), Ab (b7th), and C (b5th). The inversions are: V-1 (D, F, Ab, C), V-2 (F, Ab, C, D), V-3 (Ab, C, D, F), V-4 (C, D, F, Ab), V-5 (D, F, Ab, C), V-6 (F, Ab, C, D), V-7 (Ab, C, D, F), V-8 (C, D, F, Ab), V-9 (D, F, Ab, C), V-10 (F, Ab, C, D), V-11 (Ab, C, D, F), V-12 (C, D, F, Ab), V-13 (D, F, Ab, C), V-14 (F, Ab, C, D).

D_m7^b5 [Root on top]

V-1 V-2 V-3 V-4 V-5 V-6 V-7 V-8 V-9 V-10 V-11 V-12 V-13 V-14

A musical staff in treble clef with a key signature of one flat (Bb). It displays 14 systematic inversions of the D_m7^b5 chord. The notes are arranged in a sequence of 14 groups, each containing the notes of the chord in a different vertical order. The notes are: D (root), F (b3rd), Ab (b7th), and C (b5th). The inversions are: V-1 (D, F, Ab, C), V-2 (F, Ab, C, D), V-3 (Ab, C, D, F), V-4 (C, D, F, Ab), V-5 (D, F, Ab, C), V-6 (F, Ab, C, D), V-7 (Ab, C, D, F), V-8 (C, D, F, Ab), V-9 (D, F, Ab, C), V-10 (F, Ab, C, D), V-11 (Ab, C, D, F), V-12 (C, D, F, Ab), V-13 (D, F, Ab, C), V-14 (F, Ab, C, D).

D_m7^b5 [b3rd on top]

V-1 V-2 V-3 V-4 V-5 V-6 V-7 V-8 V-9 V-10 V-11 V-12 V-13 V-14

A musical staff in treble clef with a key signature of one flat (Bb). It displays 14 systematic inversions of the D_m7^b5 chord. The notes are arranged in a sequence of 14 groups, each containing the notes of the chord in a different vertical order. The notes are: D (root), F (b3rd), Ab (b7th), and C (b5th). The inversions are: V-1 (D, F, Ab, C), V-2 (F, Ab, C, D), V-3 (Ab, C, D, F), V-4 (C, D, F, Ab), V-5 (D, F, Ab, C), V-6 (F, Ab, C, D), V-7 (Ab, C, D, F), V-8 (C, D, F, Ab), V-9 (D, F, Ab, C), V-10 (F, Ab, C, D), V-11 (Ab, C, D, F), V-12 (C, D, F, Ab), V-13 (D, F, Ab, C), V-14 (F, Ab, C, D).

D_m7^b5 [b5th on top]

V-1 V-2 V-3 V-4 V-5 V-6 V-7 V-8 V-9 V-10 V-11 V-12 V-13 V-14

A musical staff in treble clef with a key signature of one flat (Bb). It displays 14 systematic inversions of the D_m7^b5 chord. The notes are arranged in a sequence of 14 groups, each containing the notes of the chord in a different vertical order. The notes are: D (root), F (b3rd), Ab (b7th), and C (b5th). The inversions are: V-1 (D, F, Ab, C), V-2 (F, Ab, C, D), V-3 (Ab, C, D, F), V-4 (C, D, F, Ab), V-5 (D, F, Ab, C), V-6 (F, Ab, C, D), V-7 (Ab, C, D, F), V-8 (C, D, F, Ab), V-9 (D, F, Ab, C), V-10 (F, Ab, C, D), V-11 (Ab, C, D, F), V-12 (C, D, F, Ab), V-13 (D, F, Ab, C), V-14 (F, Ab, C, D).

D_m⁶ [6th on top]

V-1 V-2 V-3 V-4 V-5 V-6 V-7 V-8 V-9 V-10 V-11 V-12 V-13 V-14

A musical staff in treble clef showing 14 chord inversions of D_m⁶ with the 6th on top. The chords are arranged from V-1 to V-14. V-1 has D4, F4, A4, B4. V-2 has D4, F4, B4, A4. V-3 has D4, F4, A4, B4. V-4 has D4, F4, B4, A4. V-5 has D4, F4, A4, B4. V-6 has D4, F4, B4, A4. V-7 has D4, F4, A4, B4. V-8 has D4, F4, B4, A4. V-9 has D4, F4, A4, B4. V-10 has D4, F4, B4, A4. V-11 has D4, F4, A4, B4. V-12 has D4, F4, B4, A4. V-13 has D4, F4, A4, B4. V-14 has D4, F4, B4, A4.

D_m⁶ [Root on top]

V-1 V-2 V-3 V-4 V-5 V-6 V-7 V-8 V-9 V-10 V-11 V-12 V-13 V-14

A musical staff in treble clef showing 14 chord inversions of D_m⁶ with the root on top. The chords are arranged from V-1 to V-14. V-1 has D4, F4, A4, B4. V-2 has D4, F4, B4, A4. V-3 has D4, F4, A4, B4. V-4 has D4, F4, B4, A4. V-5 has D4, F4, A4, B4. V-6 has D4, F4, B4, A4. V-7 has D4, F4, A4, B4. V-8 has D4, F4, B4, A4. V-9 has D4, F4, A4, B4. V-10 has D4, F4, B4, A4. V-11 has D4, F4, A4, B4. V-12 has D4, F4, B4, A4. V-13 has D4, F4, A4, B4. V-14 has D4, F4, B4, A4.

D_m⁶ [b3rd on top]

V-1 V-2 V-3 V-4 V-5 V-6 V-7 V-8 V-9 V-10 V-11 V-12 V-13 V-14

A musical staff in treble clef showing 14 chord inversions of D_m⁶ with the b3rd on top. The chords are arranged from V-1 to V-14. V-1 has D4, F4, A4, B4. V-2 has D4, F4, B4, A4. V-3 has D4, F4, A4, B4. V-4 has D4, F4, B4, A4. V-5 has D4, F4, A4, B4. V-6 has D4, F4, B4, A4. V-7 has D4, F4, A4, B4. V-8 has D4, F4, B4, A4. V-9 has D4, F4, A4, B4. V-10 has D4, F4, B4, A4. V-11 has D4, F4, A4, B4. V-12 has D4, F4, B4, A4. V-13 has D4, F4, A4, B4. V-14 has D4, F4, B4, A4.

D_m⁶ [5th on top]

V-1 V-2 V-3 V-4 V-5 V-6 V-7 V-8 V-9 V-10 V-11 V-12 V-13 V-14

A musical staff in treble clef showing 14 chord inversions of D_m⁶ with the 5th on top. The chords are arranged from V-1 to V-14. V-1 has D4, F4, A4, B4. V-2 has D4, F4, B4, A4. V-3 has D4, F4, A4, B4. V-4 has D4, F4, B4, A4. V-5 has D4, F4, A4, B4. V-6 has D4, F4, B4, A4. V-7 has D4, F4, A4, B4. V-8 has D4, F4, B4, A4. V-9 has D4, F4, A4, B4. V-10 has D4, F4, B4, A4. V-11 has D4, F4, A4, B4. V-12 has D4, F4, B4, A4. V-13 has D4, F4, A4, B4. V-14 has D4, F4, B4, A4.

D^o7 [bb7th (Cb or B) on top]

V-1 V-2 V-3 V-4 V-5 V-6 V-7 V-8 V-9 V-10 V-11 V-12 V-13 V-14

D^o7 [Root on top]

V-1 V-2 V-3 V-4 V-5 V-6 V-7 V-8 V-9 V-10 V-11 V-12 V-13 V-14

D^o7 [b3rd on top]

V-1 V-2 V-3 V-4 V-5 V-6 V-7 V-8 V-9 V-10 V-11 V-12 V-13 V-14

D^o7 [b5th on top]

V-1 V-2 V-3 V-4 V-5 V-6 V-7 V-8 V-9 V-10 V-11 V-12 V-13 V-14