

# More On Playing Through Changes

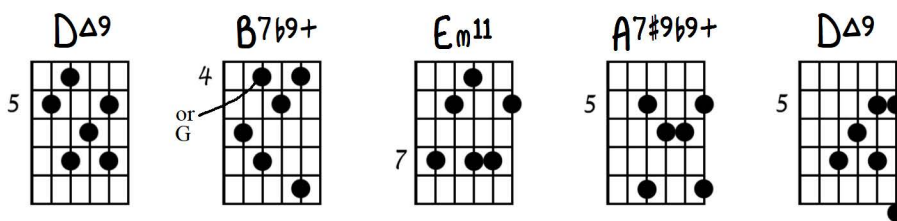
Ted Greene

1978-03-22

1978-03-24

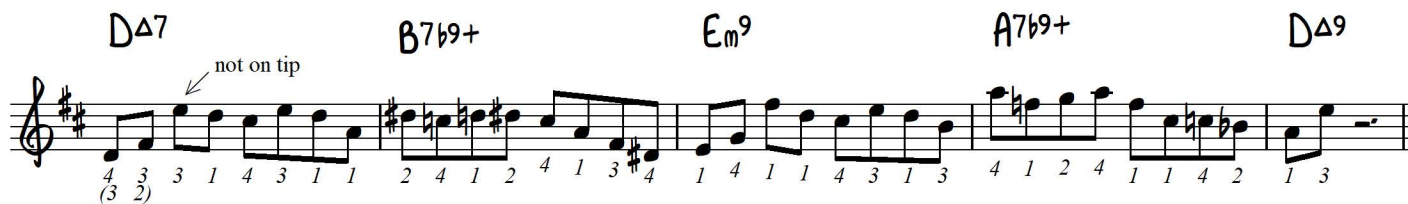
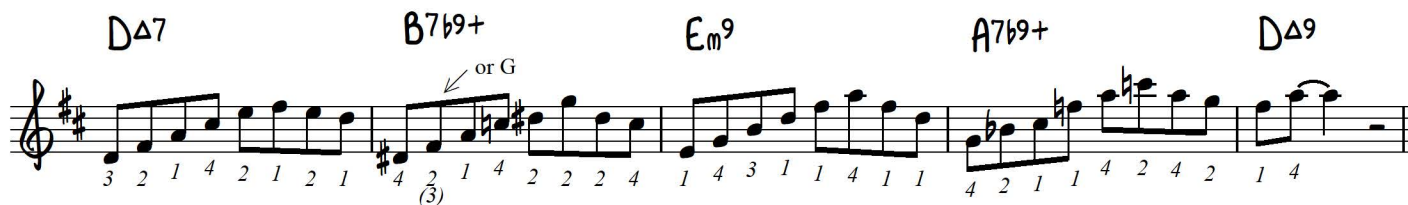
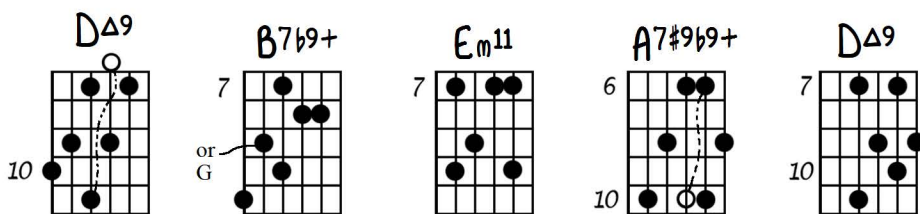
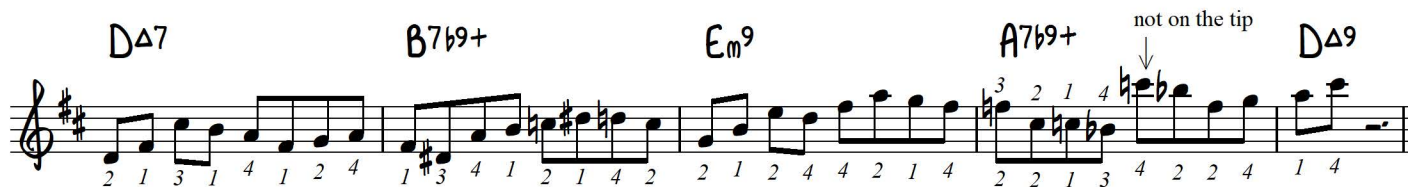
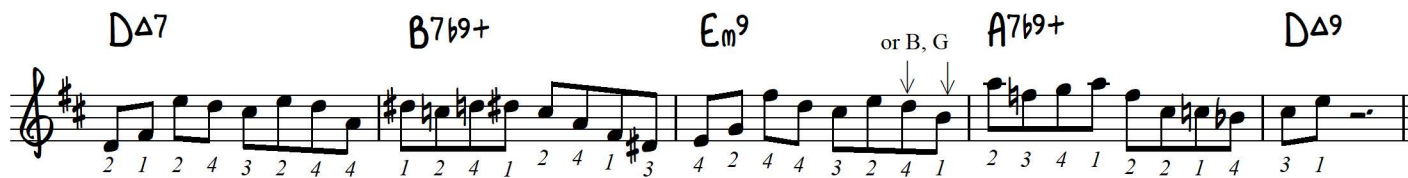
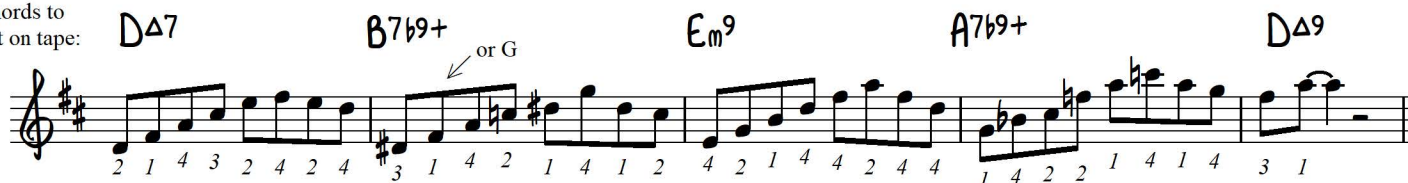
## Basing Your Solo on Arpeggio Fragments

Arpeggio  
Fragments:



Key of D

Chords to  
put on tape:



"More On Playing Through Changes" - Ted Greene, p. 2

D $\Delta$ 7      B7b9+      E $m$ 9      A7b9+      D $\Delta$ 9

4 3 1 3 1 3 4 1    3 4 1 3 4 2 1 4    4 3 3 1 1 4 2 1    4 1 4 2 3 1 1 2    4 3

(1)

(Chromatic tones will be discussed later)

D $\Delta$ 7      B7b9+      E $m$ 9      A7b9+      D $\Delta$ 9

3 4 1 3 1 3 1    3 4 1 2 4 3 3 1    4 1 3 1 4 3 1 4 3    3 1 1 2 3 1 1 3    1 3

(2) (4)

chromatic tone ↓

Key of Bb

Bb $\Delta$ 9      G7b9+      C $m$ 11      F7#9b9+      Bb $\Delta$ 9

Bb $\Delta$ 7      G7b9+      C $m$ 9      F7b9+      Bb $\Delta$ 9

2 1 4 3 1 3 1 4    3 1 4 2 1 1 1 2    4 2 1 4 3 2 3 4    2 1 4 3 3 1 3 1    3 2

or Eb ↓

Bb $\Delta$ 7      G7b9+      C $m$ 9      F7b9+      Bb $\Delta$ 9

2 1 1 4 3 1 4 4    1 2 4 1 2 4 1 3    4 2 3 4 3 1 4 1    (2) (2) (2) 1 3 3 4 3 1    4 1

Bb $\Delta$ 7      G7b9+      C $m$ 9      F7b9+      Bb $\Delta$ 9

2 1 3 1 4 1 2 4    1 3 4 1 2 1 4 2    2 1 1 4 3 2 4 3    3 4 3 1 1 4 3 1    2 1

BbΔ7      G7b9+      Cm<sup>9</sup>      F7b9+      BbΔ9      etc.

Fingerings: 3 4 3 1 4 4 1 4 | 3 1 2 4 1 4 4 1 | 2 1 2 4 4 1 4 2 | 3 2 1 2 1 4 3 1 1 3 | 3 2 4 2 2 3 1 4

BbΔ9      G7b9+      Cm11      F7#9b9+      BbΔ9

Chord diagrams showing fingerings for BbΔ9, G7b9+ (with 'or D' and '10' alternatives), Cm11, F7#9b9+, and BbΔ9.

BbΔ7      G7b9+      Cm<sup>9</sup>      F7b9+      BbΔ9

Fingerings: 1 4 2 1 4 1 4 3 | 2 1 3 1 4 3 4 1 | 2 1 4 2 1 4 1 2 | 1 4 2 1 1 4 1 3 | 1 4 (2 1)

BbΔ7      G7b9+      Cm<sup>9</sup>      F7b9+      BbΔ9

Fingerings: 1 4 4 2 1 4 2 2 | 3 1 2 3 1 2 4 1 | 2 1 2 3 2 4 3 4 | 1 1 3 1 1 2 1 4 | 3 2 4

BbΔ7      G7b9+      Cm<sup>9</sup>      F7b9+      BbΔ9

Fingerings: 1 4 1 4 2 4 1 2 | 4 1 2 4 1 4 3 1 | 1 4 4 2 1 4 2 1 | 1 2 1 3 4 2 1 3 | 1 4 (4)

BbΔ7      G7b9+      Cm<sup>9</sup>      F7b9+      BbΔ9      etc.

Fingerings: 1 2 1 4 2 2 4 2 | 1 4 1 3 4 2 2 4 | 1 4 1 2 4 2 1 | 2 1 4 2 1 4 3 1 | 2 1 3 1 1 2 4 2 (3)



# MORE ON PLAYING THROUGH CHANGES: BASING YOUR SOLO ON ARPEGGIO FRAGMENTS

Key of D

ARPEGGIO FRAGMENTS

CHORDS TO PUT ON TAPE

DA9 B7b9+ Em11 A7b9#+ DA9

DA7 B7b9+ Em9 A7b9+ DA9

DA7 B7b9+ Em9 A7b9+ DA9

DA7 B7b9+ Em9 A7b9+ DA9

NOT ON THE TIP

DA9 B7b9+ Em11 A7b9#+ DA9

DA7 B7b9+ Em9 A7b9+ DA9

DA7 B7b9+ Em9 A7b9+ DA9

DA7 B7b9+ Em9 A7b9+ DA9

CHROMATIC TONE (will be discussed later)

12/8 on such chord



