

# Minor 7th Colors for Single-Line Playing

Ted Greene  
1983-07-31

1)

## Bm11 Arpeggio in Segments

optional add C#

Bm11/13

Bm7/11

or D  
or both

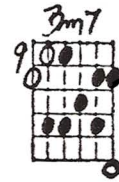
optional:  
add C#

Bm7/11

Bm11

optional:  
or E or both

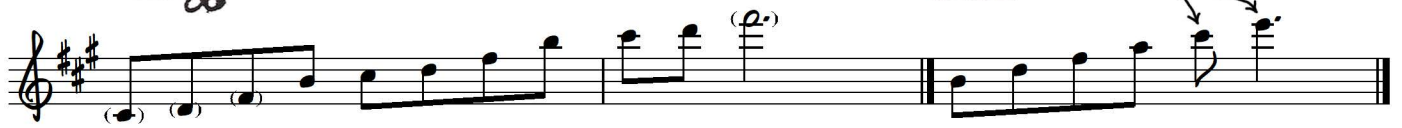
B Dorian scale



or E



or D



or C#

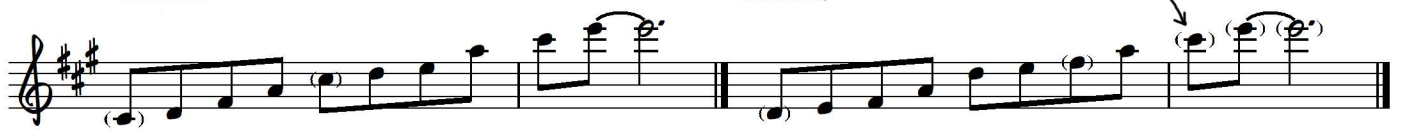
or D



or E or D



or D



or D

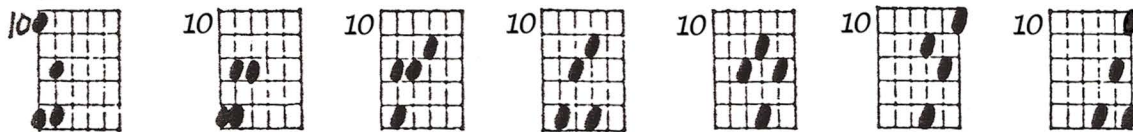


or B



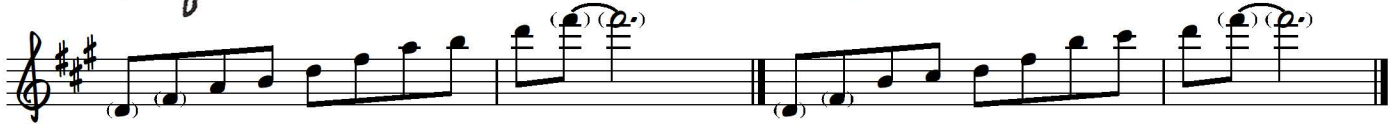
2)

*Bm7* Arpeggio in Segments



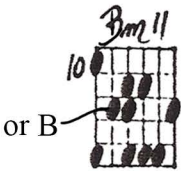


B Dorian scale

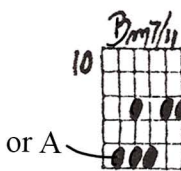


or E

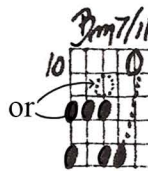
or B



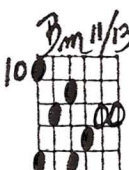
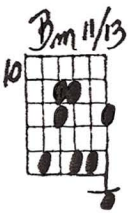
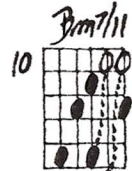
or B



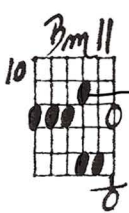
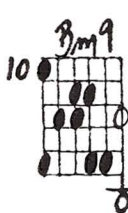
or A



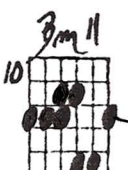
or



or D



or E



or G#





