

# Lesson from George Van Eps in Early 1972

Xerox of two cards he gave me.  
He had little strips and cards he'd  
move around on his desk in his den.

I didn't absorb this apparently (from trying  
in a cursory read through at present). I'd like  
to now. Always meant to. *Not* easy stuff.  
10-12-03 Sunday night.

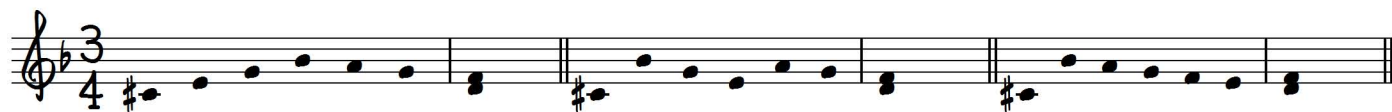
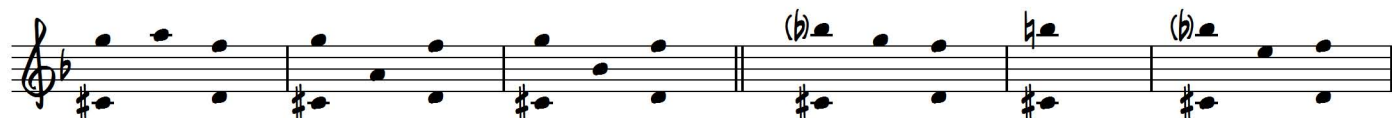
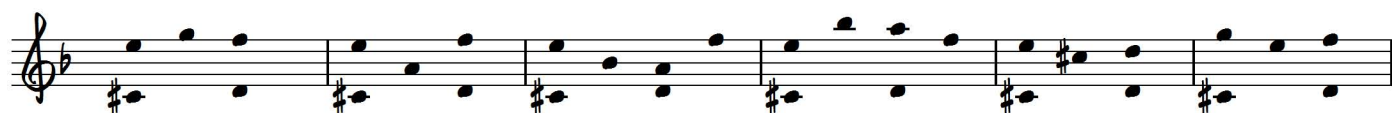
GVE

The musical notation consists of three staves in 2/3 time, each containing three measures of music. The first staff begins with a treble clef and a 2/3 time signature. The first measure has a triplet of eighth notes (G4, A4, B4) on the upper staff and a triplet of eighth notes (E3, F3, G3) on the lower staff. The second measure has a triplet of eighth notes (A4, B4, C5) on the upper staff and a triplet of eighth notes (F3, G3, A3) on the lower staff. The third measure has a triplet of eighth notes (B4, C5, D5) on the upper staff and a triplet of eighth notes (G3, A3, B3) on the lower staff. The second and third staves follow a similar pattern with different note values and fingerings. The second staff uses quarter notes and eighth notes, while the third staff uses quarter notes and eighth notes with a 'c' (crescendo) marking. Fingerings are indicated by numbers 1, 2, and 3 above the notes. The piece concludes with a double bar line.

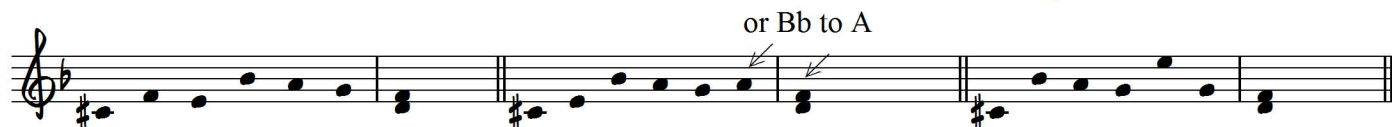
# *Last Time I Ever Saw My Beloved Teacher and Friend, George Van Eps*

2

1-31-98 Saturday night  
at Papashon



Sunday 2-7-99



Lesson from George Van Eps in early 1972 I didn't absorb this

XEROX of 2 cards he gave me. He had little strips of paper he'd hold more around on his desk in his den

apparently (from trying in a curiosity reading of present) I'd like to say: Always meant to Not Sum me. Every stuff.

Handwritten musical notation on a single staff. It consists of a sequence of notes with fingerings indicated above: 1, 2, 1, 2, 1. The notes are on a treble clef staff. To the right of the staff is the label 'GVE'. Below the staff, the number '2/3' is written.

Handwritten musical notation on a single staff. It consists of a sequence of notes with fingerings indicated above: 3, 1, 2, 1. The notes are on a treble clef staff. To the right of the staff is the label 'GVE'. Below the staff, the number '2/3' is written.

1:31-98 Set. might at partition I got time I ever saw my beloved teacher & friend, George Van Eps

Handwritten musical notation on multiple staves. The notation includes various notes, accidentals (sharps and naturals), and rests. The key signature appears to be one sharp (F#). At the bottom right of the notation, there is a label 'Sum 2-7-99'.