

Starting Notes of Beatles' Records

Ted Greene, 1989-12-20

Key's Note

Starts on the Root:

Please Please Me, From Me to You, Boys, All I've Got to Do, Can't Buy Me Love, You Can't Do That, Roll Over Beethoven, You've Really Got a Hold On Me, Intro (m) for If I Fell, (m) Things We Said Today, Slow Down, Matchbox, Kansas City, Honey Don't, What You've Doing, Everybody's Trying to Be My Baby, You Like Me Too Much, Bad Boy, The Night Before, You've Got to Hide Your Love Away, It's Only Love, I've Just Seen A Face, You Won't See Me, Girl.

Starts on the 2nd:

Yesterday, Intro to Baby It's You, It Won't Be Long, [refrain:] And I Love Her, I'll Follow the Sun, I'm Down.

Starts on the b3rd:

Maybe, Roll Over Beethoven, Long Tall Sally, Intro to Mr. Moonlight, Hey-Hey-Hey-Hey, The Word

Starts on the 3rd:

Anna, Misery, Chains, There's A Place (also 5th), I'm Happy Just to Dance (kinda both and see 5th), Little Child, Till There Was You, Hold Me Tight, Not a Second Time, A Hard Day's Night, Tell Me Why, I'll Cry Instead, Anytime At All, She's a Woman, No Reply, I'm a Loser, Eight Days a Week, You're Gonna Lose That Girl, I'm Looking Through You.

Starts on the 4th:

Twist and Shout, All My Lovin', Every Little Thing, Drive My Car.

Starts on the 5th:

I Saw Her Standing There, Ask Me Why, Thank You Girl, Love Me Do, Intro: Do You Want to Know a Secret, P.S. I Love You (refrain) A Taste of Honey, She Love You (both), (There's s Place), Relative minor intro: I'm Happy Just to Dance, I Wanna Be Your Man, Devil in Her Heart, Money, I Call You Name, I'll Get You, Please Mr. Postman (nebulous), I Should Have Known Better, Intro: And I Love Her, When I Get Home intro, I'll Be Back, I Feel Fine, Baby's in Black, Mr. Moonlight, Eight Days a Week intro, Ticket to Ride, Tell Me What You See, Another Girl, Act Naturally, Norwegian Wood, Nowhere Man, Think for Yourself, Michelle, What Goes On, In My Life.

Starts on the 6th:

P.S. I Love You, Baby It's You, refrain: Do You Want to Know a Secret, Don't Bother Me, Intro to Please Mr. Postman, refrain of If I Fell.

Starts on the b7th:

Intro to Love Me Do, Rock and Roll Music, Dizzy Miss Lizzie.

Starts on the 7th:

Intro to There's a Place, I Want to Hold Your Hand (with 6th grace note or slide), The *effect* of This Boy.

"Starting Notes" of Beatles' Tunes

For Student Ear-Training Course

Root of the Key on Top

1) Please Please Me
11-26-62

2) From Me to You (timing is the vocal, not the intro.)
3-5-63



3) She Loves You "verse"
7-1-63 (Very "iffy" as to exact note. Constantly ephemeral upon reappearances)

4) It Won't Be Long "verse"
7-30-63

etc.



5) All I've Got to Do
9-11-63

6) Don't Bother Me
6-11-62

Funny: Beatles 1st original in minor. George's 1st Em original.



2nd or 9th of Key as 1st note

1) It Won't Be Long "chorus"
7-30-63

2) Roll Over Beethoven
7-30-63

With either a) almost E# or b) the E or F and D in the double track make it a tough one to sense as exact pitch



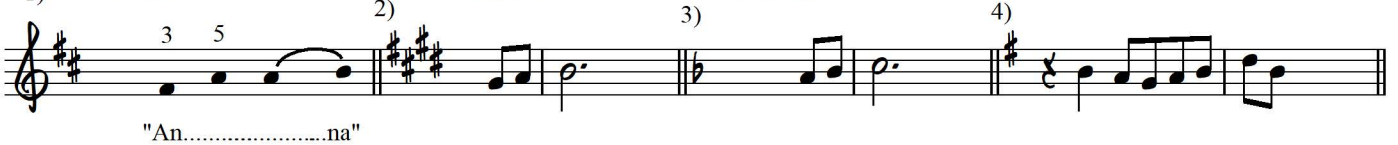
3rd of Key as 1st note

1) Anna
2-11-63

2) Little Child
9-11-63

3) Till There Was You
7-18-63

4) Not a Second Time



4th of Key as 1st note

1) A Taste of Honey "verse"
out of time

2) Twist and Shout

3) All My Loving
7-30-63



5th of Key as 1st note

1) I Saw Her Standing There 2-11-63

2) P.S. I Love You (chorus)

5 6 R

out of time

3) Do You Want to Know a Secret? verse (in minor)

4) A Taste of Honey (chorus)

5) She Loves You (chorus) 7-1-63

6) I Wanna Be Your Man 7-11-63

7) Devil in Her Heart 7-18-63

Almost a #5 or 6 (and sounds more like b7, 7, or 8 of the key of relative minor)

Not there the 1st time, but retroactively implied.

6th of Key as 1st note

8) Money 7-18-63

1) P.S. I Love You "verse" 9-11-62

2) Baby It's You 2-18-63

6 7 6 5

Note: John [Lennon] to ♯9,
Barrett [Strong] to #9.
And timing is quite different than Motown.

3) Do You Want to Know a Secret?

4) Please Mr. Postman 7-30-63

b7th of Key as 1st note

Misery (as pickup note here) 2-11-63

Out of time

Boys

Just barely

Or Root. (Probably nicer as 8 ala Shirelles)

Starting Notes of Beatles' Records

12-20-89

KEY NOTE

STARTS on the Root: Please Please Me, From Me to You, Boys, All You Get to Do, Can't Buy Me Love, You Can't Do That, Roll Over Beethoven, You've Got a Hold on Me, Intro (m) for up & get it, (m) things up & get it today, Slow Down, Matchbox, Kansas City, Honey Don't, What You're Doing, Everybody's Trying to Be My B.G., You Like Me Too Much, Bad Boy, The Night Before, You've Got to Hide Your Love Away, It's Only Love, I've Just Seen a Face, You Won't See Me, Girl

1st: Intro to Baby It's You, I Won't Be Long, ^{Refrain:} I'll Follow the Sun, I'm Down Yesterday, **2nd:** Intro to Mr. Moonlight, Hey-Hey-7-7, The Words

3rd: Anna, Misery, Chains, There's a Place (also 5th), I'm Happy Just to D. (both), Little Child, Tell Me Why, I'll Cry Instead, Anytime at All, She's a Woman, No Reply, I'm a Loser, 8 Days a Week, You're Gonna Lose That Girl, I'm Looking Through You, ^{KINDA see 5th}

4th: Twist & Shout, All My Loving, Every Little Thing, Drive My Car

5th: I Saw Her St. Th., Ask Me Why, Thank You Girl, Love Me Do, Intro = Do You Want to Know a Secret, P.S. I Love You ^{Refrain}, A Taste of Honey, She Loves You (both), (There's a Place), Rel. Minor, Intro: I'm Happy Just to Dance, I Wanna Be Your Man, Devil in Her Heart, Money, I Call Your Name, I'll Be Your Man, Please Mr. Postman (rebutious), I Should Have Known Better, Intro: I Won't Love Her, When I Get Home (Intro), I'll Be Back, I Feel Fine, Ruben in Black, Mr. Moonlight, 8 DAYS A WEEK, Ticket to Ride, Tell Me What You See, Another Girl, Act Naturally, Tell Me What You See, Norwegian Wood, Ronder Man, Think for Yourself, Michelle, What Goes On, I'm My Life,

6th: P.S. I Love You, Baby It's You, ^{Refrain:} Do You Want to Know a Sec., Don't Bother Me, ^{Intro to} Please Mr. Postman, ^{Refrain of I'll Be Back}

7th: Intro to Love Me Do, Rock & Roll Music, Dizzy Miss Dizzie,

11th: Intro to There's a Place, I Want to Hold Your Hand (w/ both grace notes on slide), ^{the effect of} This Boy

'STARTING NOTES' for Student Ear Training Course

3:44 A.M.
10-17-90

ROOT of the Key on TOP

11-26-62 ① PLEASE PLEASE ME

3-5-63 (vocals, not the intro) ② FROM ME TO YOU

③ VERY "HAPPY" EXACT NOTE CONSTANTLY CHANGES REPEATS

④ VERSE: 7-30-63 IT WON'T BELONG

9-11-63 ⑤ ALL I'VE GOT TO DO

6-11-62 ⑥ DON'T BOTHER ME. FUNNY: BEATLES' 1ST ORIG. IN MINOR GEORGE'S 1ST EM1 ORIG.

2nd of Key as 1st note

7-30-63 ① 'CHORUS' IT WON'T BELONG

7-30-63 ② ROLL OVER BEETHOVEN

with a) almost a b) the E of F and D in the marked a tough one to abuse as exact pitch

5:19 A.M.
10-17-90

3rd as 1st note of Key

BEATLES

10-17-90

2-11-63 ① ANNA

3 5 NA

9-11-63 ② LITTLE CHILD

7-18-63 ③ TILL THERE WAS YOU

④ NOT A SECOND TIME

JOHN A LITTLE # 1st time ON 1ST NOTE

4th as 1st note of Key

10-17-90

① 'VERSE' A TASTE OF HONEY

② TWIST AND SHOUT 7-30-63

③ ALL MY LOVING

4 #4 5 1 3 2

an EAR TRAINING: for the COURSE for the students
 Beatle songs' starting notes by position in the KEY

3:20 A.M.
 10-17-90

5th as 1st note of Key

6th of the Key on 1st

3:51 A.M.
 10-17-90

b7th as 1st note of Key

10-17-90