

"Spud" for Guitar

or Spud Influence

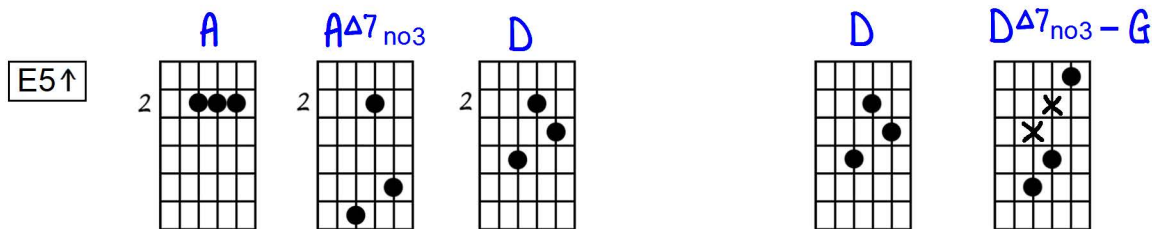
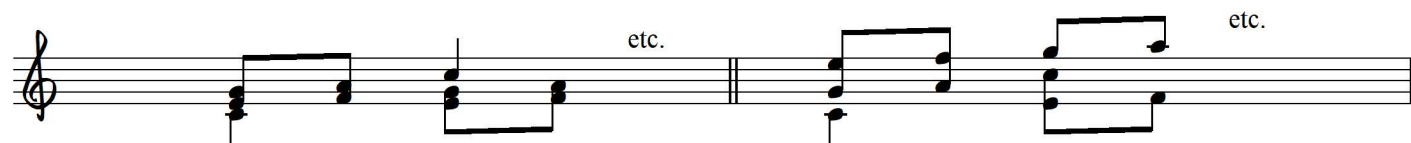
[Grid diagrams illustrate one way of playing. Other ways are also possible.]

● = Pretty

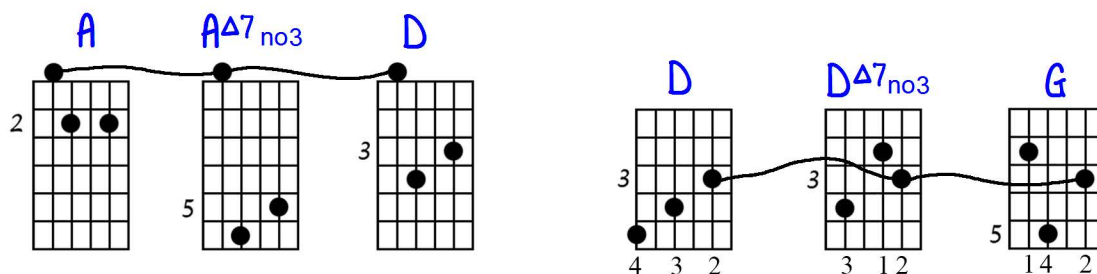
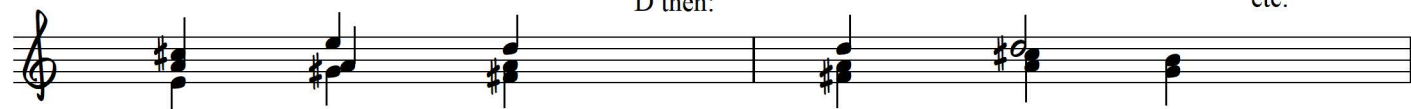
MAJOR

E5↑ C.O.P.

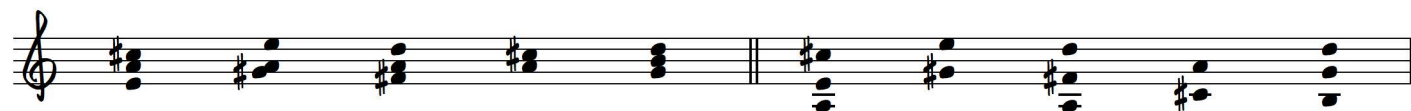
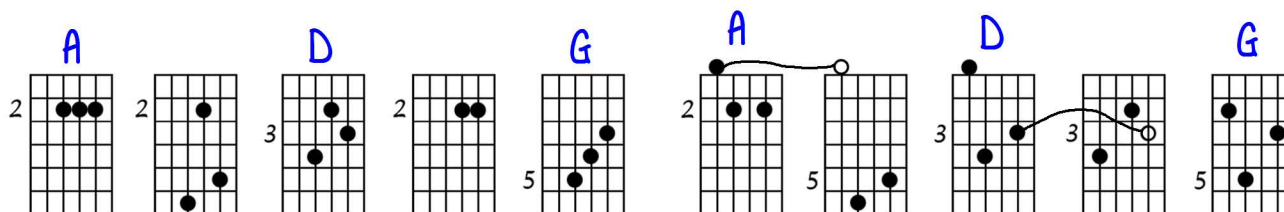
Scale #1



Linger in D then:



Shorter



E5↑
Alt.

C - Ab7 **F** **Db7** **Bb**

And open

E5↑

A **A7sus - A7** **D** **D7sus - D7** **G**

etc. And open

E5↑
S.V.L.

C - G/C **F - C/F** **Bb**

etc. And open

E5↑
S.V.L.

C - G/C **F** **F - C/F** **Bb**

etc. And open

E5↑

C - E7 **F - A7** **Bb**

etc. And open

5 to b7 with C.O.P. of this one movement. 5 to b7 throughout entire progression.

MAJOR

Open

E5↓

Scale #1

C G D A E C G D A E

etc. etc.

E5↓ E5↓

R to b7
Close
& open

E5↓ E5↓

Close
& open

C - Eb Gm C - G° G

etc. etc.

E5↓ I to I7

E5↓ E5↓

5 to -5 5 to -5
3 to -3

Try changing
positions and
voice-leading
from there.

A A7 E E7 B

etc.

S.V.L.

E5↓

C G D A E B

etc.

E5↓

C - C7

G

E5↓

C - C7^{sus}

G

etc.

C.O.P.

E5↓

C

C

C

G

G

G

D

D

D

A

A

A

E

"SPUD" for GUITAR

10-14-77

SCALE #1
MAJOR
PRETTY
C.O.P.

E5↑
OL' SAID INFLUENCE

SHORTEE
A D G A D G

E5↑ ALT

E5↑

E5↑

E5↑

E5↑

and stop with this one movement
etc. with C.O.P. etc.
5 to b7 throughout entire prog.

Empty musical staves for notation.

"SPUD" for GUITAR

10-17-77

TRY CHANGING POSITIONS and VOICE LEADING from there.

E5V SCALE #1 MAJOR

Handwritten musical notation for guitar on two staves. The notation includes notes, rests, and various annotations. Annotations include "OPEN", "R to b7", "CLOSE TO OPEN", "Sto", "Sto-5", "E5V I to I7", "S.V.L.", "E5V", "E5V", "E5V", and "E5V C.O.P.". Some notes are marked with "+" and "#". The first staff ends with a bar line and the numbers "-5" and "3to3".

Ten empty musical staves for writing.