

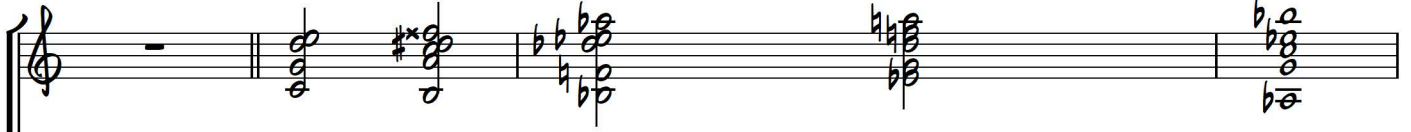
WHAT'S NEW

Ted Greene
1984-01-05

Playing order: ● × □ △
○ = opt.

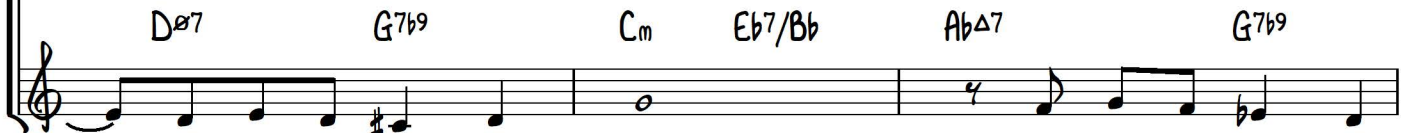
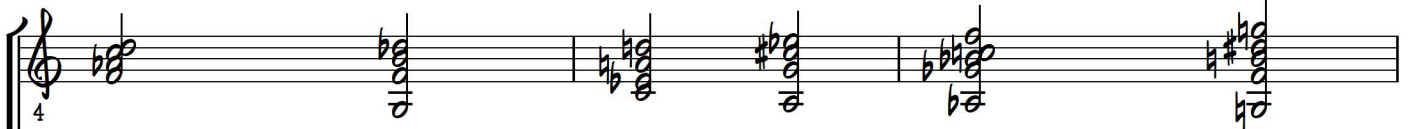
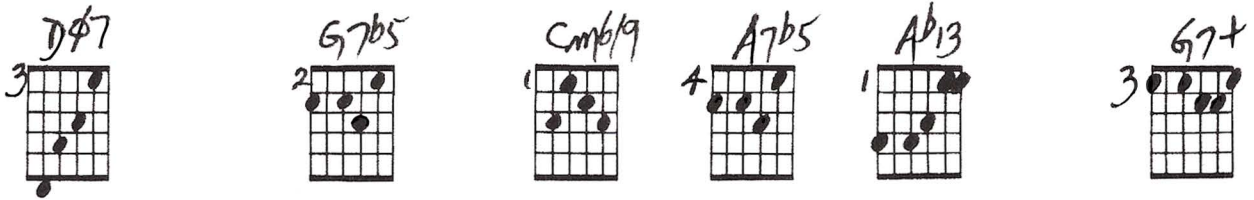
Comping

Please analyze



1. What's new? _____

How is the world treat - ing you? _____



_____ You have - n't changed a bit,

love - ly as e - ver,



I must ad - mit. _____

2. What's new?

Handwritten guitar chord diagrams for measures 9-10:

- Measure 9: C (5th fret)
- Measure 9: Cm7/D7 (5th fret)
- Measure 9: Fbm9 (6th fret)
- Measure 9: E13#11 (9th fret, open string)
- Measure 10: Bbm11 (10th fret)
- Measure 10: Eb7b9+ (9th fret)

Musical notation for measures 9-10, including treble and bass clefs with chord symbols: C6, Bbm7, Eb7.

How did that ro - mance come through?

Handwritten guitar chord diagrams for measures 11-12:

- Measure 11: AbΔ9 (8th fret)
- Measure 11: DbΔ7 (11th fret)
- Measure 11: AbΔ9 (10th fret)
- Measure 11: Ab7 (9th fret)
- Measure 11: D♭7/9/11 (8th fret, no b3)
- Measure 12: Db13 (6th fret)
- Measure 12: Cm6Δ7 (7th fret)
- Measure 12: A♭7 (5th fret)

Musical notation for measures 11-12, including treble and bass clefs with chord symbols: AbΔ7, D♭7, G7b9, Cm, Eb7/Bb.

We have -n't met since then,

Handwritten guitar chord diagrams for measures 13-14:

- Measure 13: Ab13#11 (9th fret)
- Measure 13: G7#9+ (8th fret)
- Measure 13: Cm6/9/11 (12th fret)
- Measure 14: Db7 (6th fret)

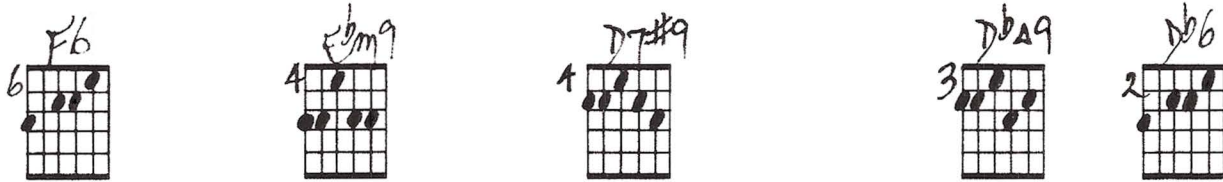
Add low Ab

Add low G

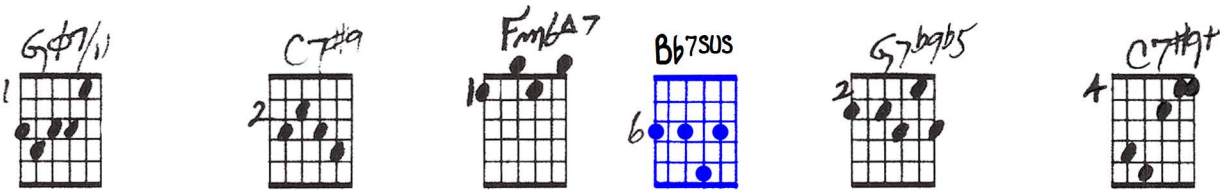
Optional: add C

Musical notation for measures 13-14, including treble and bass clefs with chord symbols: AbΔ7, G7b9, C6, Gm7, C7b9.

gee, but it's nice to see you a - gain. — What's new?



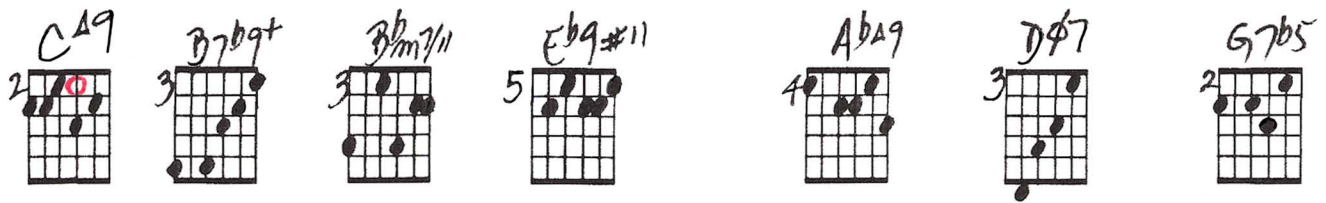
Musical notation for the first system (measures 17-21). The guitar part shows chords: F6, Ebm7, Ab7, DbA7. The bass line has a triplet of notes. Lyrics: Pro - a - bly I'm bor - ing you.



Musical notation for the second system (measures 20-24). The guitar part shows chords: G7, C7b9, Fm, Ab7/E, DbA7, C7b9. Lyrics: but see - ing you is grand and you were sweet to



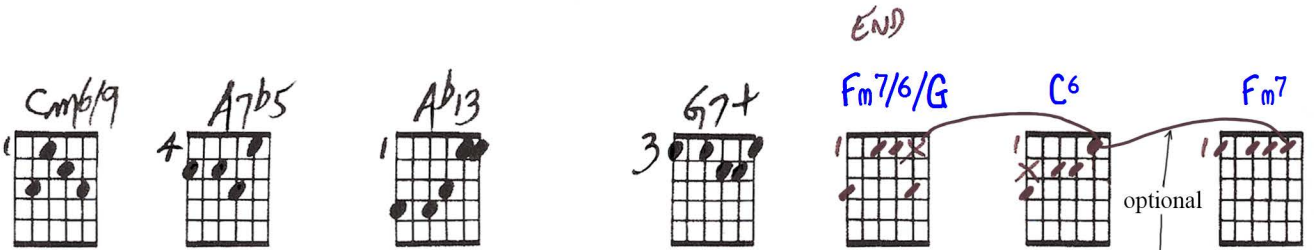
Musical notation for the third system (measures 23-27). The guitar part shows chords: Fm, Eb7, D7, G7b9. Lyrics: of - fer your hand I un - der - stand. 3. A - dieu



25

C⁶ B^bm⁷ Eb⁷ Ab^Δ7 D^ø7 G⁷b⁹

Par - don my ask - ing what's new. Of course you could - n't

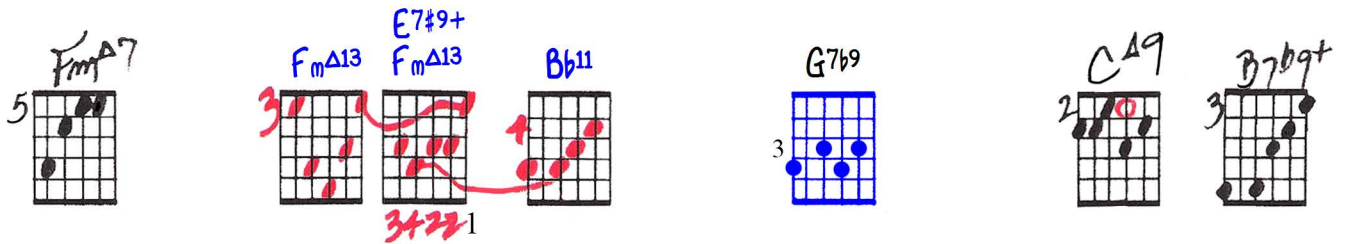


29

C_m Eb⁷/B^b Ab^Δ7 G⁷b⁹ C⁶ F_m⁷

know, I have - n't changed, I love you so.

Alternate for measures 23-25:



F_m Eb⁷ D^ø7 G⁷b⁹ C⁶

of - fer your hand I un - der - stand. 3. A - dieu

The Guitarist's Mini-Grid I

1-5-84

PLEASE ANALYZE

WHAT'S NEW

5 C19 B7b9t Bbm7/11 Eb9#11 ABA9 D#7 G7b5 Cmb/9 A7b5 Ab13 G7# CA9

11(123)
11

1 F11 Bb11 Ab9 G13 C Cmb7 Bbm9 E13#11 Bbm11 Eb7b9t ABA9

10

11 D#A7 ABA9 Ab7 D#7/9/11 Bb13 CmbA7 A#7 Ab13#11 G7b9t Cmb9/11

LOW A6 LOW G (OPT. ADD C)

6 D7 F6 Bbm9 D7b9 7bA9 D#6 G#7/11 C#19 FmbA7 Ab13#11 G7b9b5 C7b9t FmbA7

4 Bb11 G7b9 Em7/9 Dm7/9 D#7#9 CA9

6 *Write a DECORATED VERSION: 2 to 4 positions + ?*