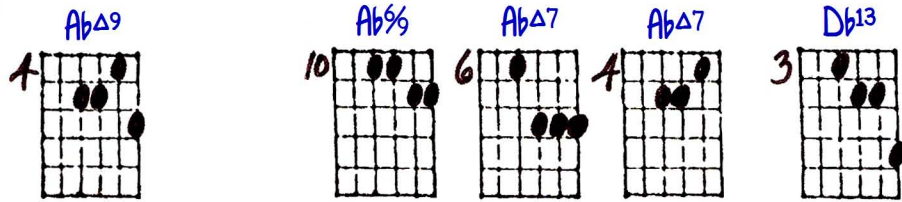


ON A CLEAR DAY (YOU CAN SEE FOREVER)

3-13-94
© Ted Greene

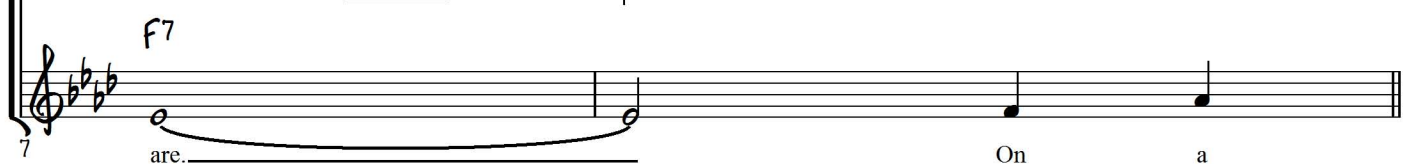
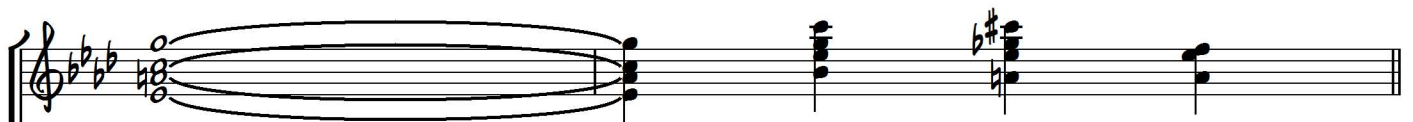
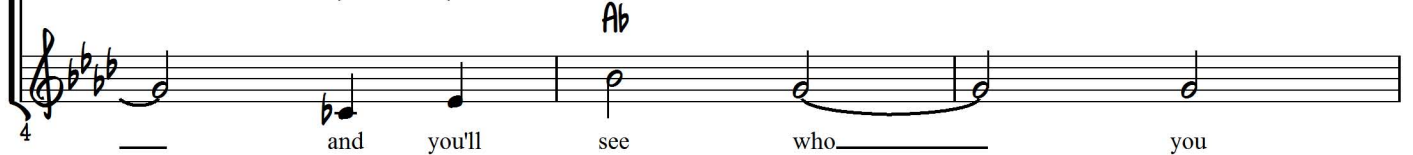
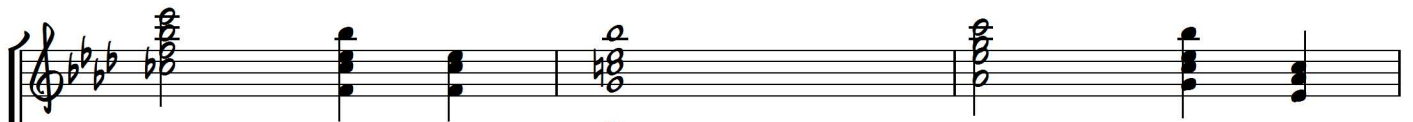
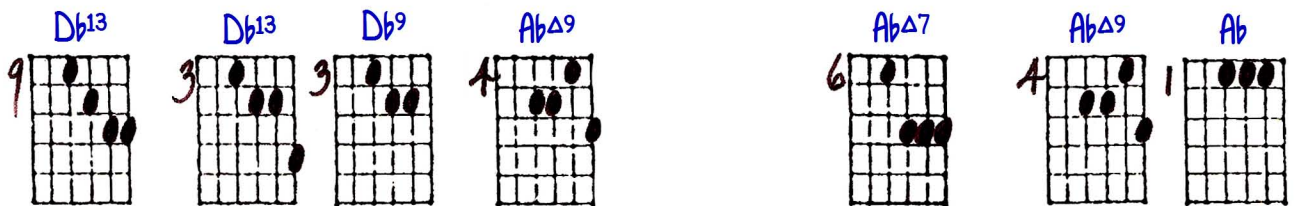
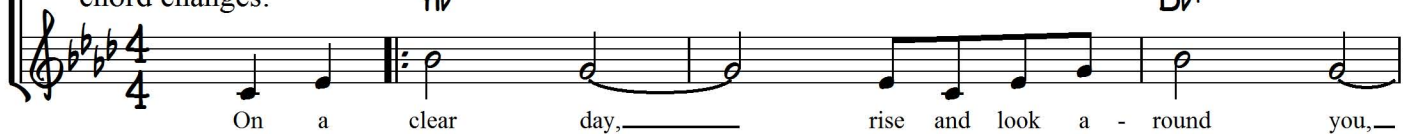
V-2 Comping on Top 4 Strings



Comping:

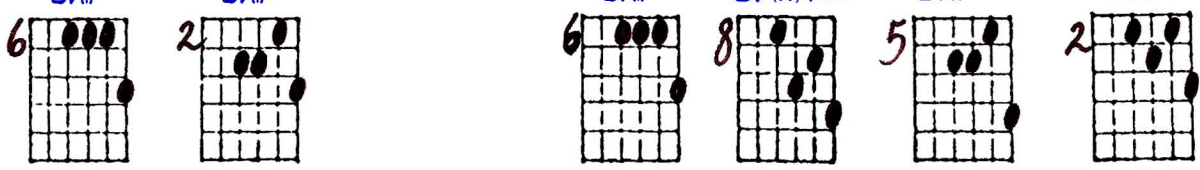
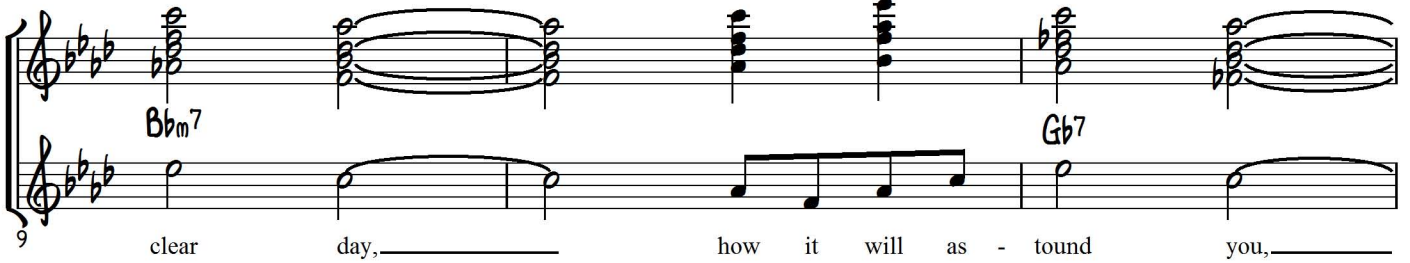


Ted's 1974 basic
chord changes:



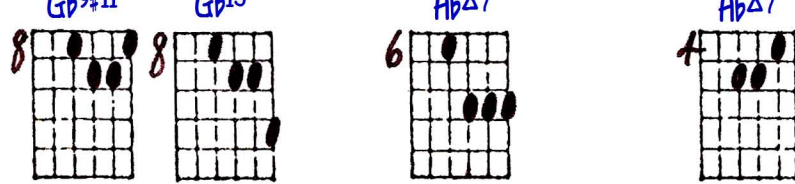
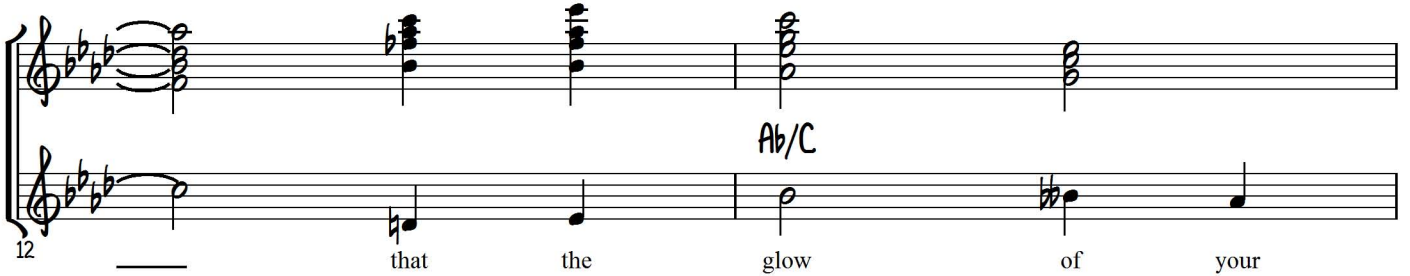
"On a Clear Day" - Ted Greene Arrangement, 1974-04-04 (p. 2)

Bbm⁹
Bbm⁷
Bbm⁹
Bb(m)7/11
Dbm(Δ7)
Dbm⁶

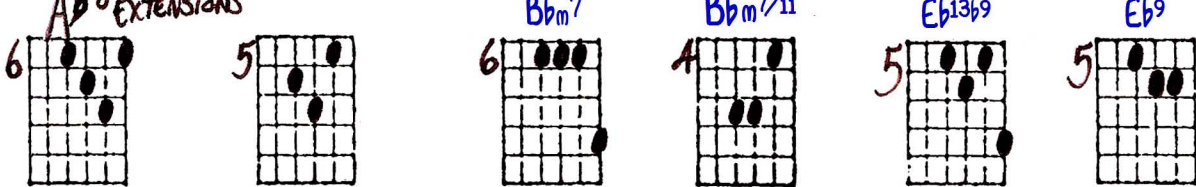
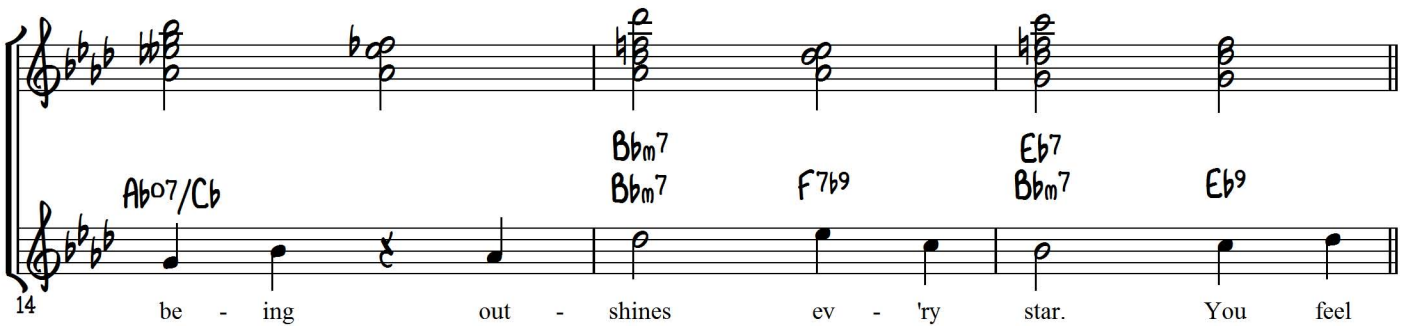
9 clear day, _____ how it will as - tound you, _____

Gb9#11
Gb13
AbΔ7
AbΔ7

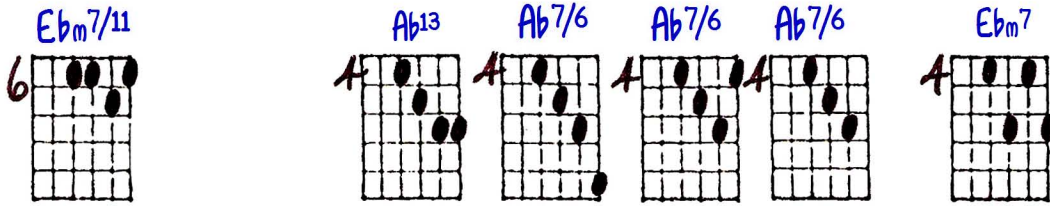
12 _____ that the glow of your

Ab⁰ EXTENSIONS
Bbm⁷
Bbm⁷/11
Eb13b9
Eb⁹

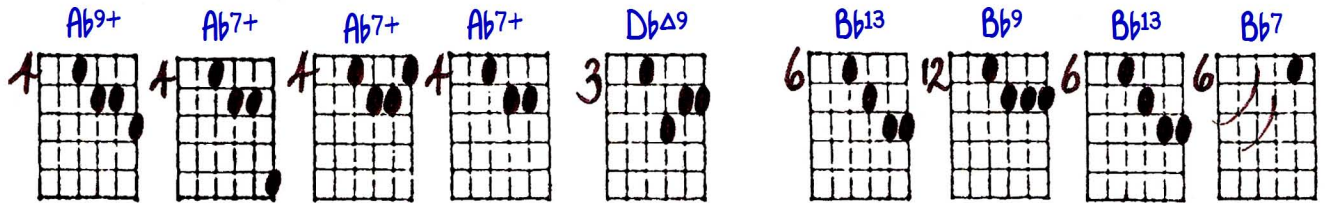



14 be - ing out - shines ev - 'ry star. You feel

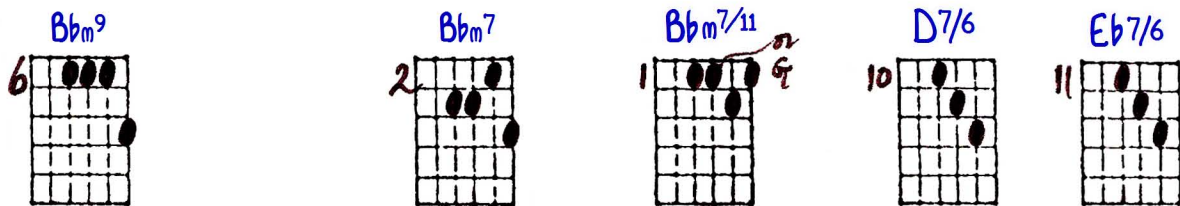
"On a Clear Day" - Ted Greene Arrangement, 1974-04-04 (p.3)



17 part of _____ ev - ry moun - tain, sea, and shore.



20 _____ You can hear, from far and near, a world you've



23 nev - er heard be - fore. _____ And on a

"On a Clear Day" - Ted Greene Arrangement, 1974-04-04 (p.4)

12 **Ab Δ 7** 10 **Ab $\%6$** 8 **Ab/9** 6 **Ab Δ ⁹_{no3}** 7 **C m ⁶_{F⁹}** 4 **C m ⁶_{F⁹}**

25 clear day, on that clear day,

Ab Δ 7 **Ab** **C m ⁷** **F⁷**

C m ⁷ **F⁷/₆** **B b ^m⁷** **C m ⁷** **D b Δ _{B b ^m⁹}** **C m ⁷_{B b ⁷}**

28 you can see for - ev - er and

F⁷ **B b _m** **C m** **D b** **C m**

Ab⁶ **F⁷ $\#$ ₉** **D b ¹¹** **G b ⁹**

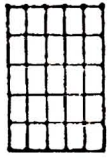
to top or turnaround

1. -----Turnaround -----

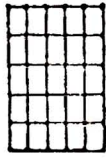
31 ev - - - er - - - more. (On a)

B b ^m⁷ **E b ⁷** **Ab** **F m** **B b _m** **E b ⁷**

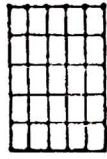
"On a Clear Day" - Ted Greene Arrangement, 1974-04-04 (p.5)



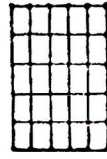
Bbm



Cm



Db



Cm



Ab6



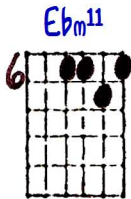
F7#9

12.

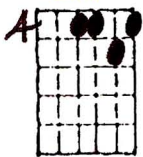
ev - er and ev - er and

Bbm Cm Db Cm Bbm7

35 ev - er and ev - er and ev - - -



Eb^{m11}



Db^{m11}



Ab^{Δ13}

Er - - - - - more.

Eb7 Ab

38

Key of
Ab

1 10 6 4 3 9 3 3 4 6

4 1 1 8 7 6 6 2 6 8

5 2 8 8 6 4 6 5 6 4

Ab EXTENSIONS

5 5 6 4 4 4 4 4 4 4

4 4 3 6 12 6 6 6 2 1

10 11 12 10 8 6 7 4 1 1

2 4 6 8 9 7 9 8

*
OPTIONAL
LAST BAR

6 4 3

to top or thumb