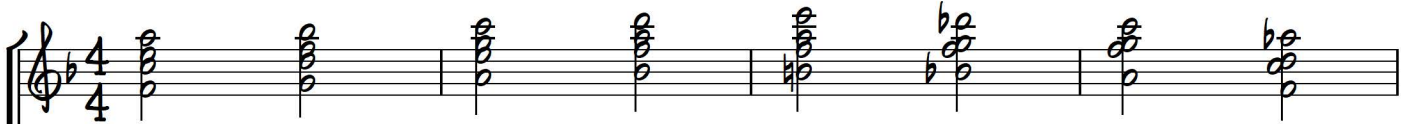
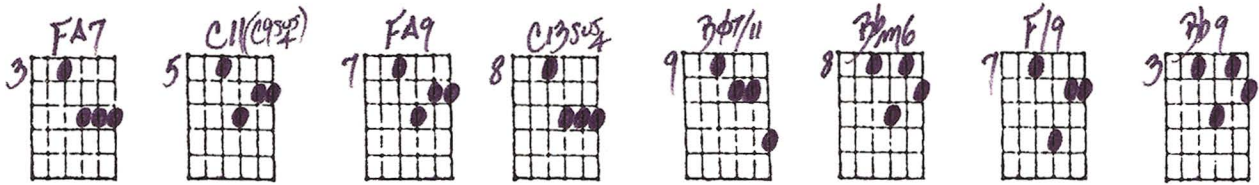


# BYE, BYE BLACKBIRD

All chords get 2 beats  
unless marked otherwise

Comping on the Top 4 Strings, V-1 and V-2

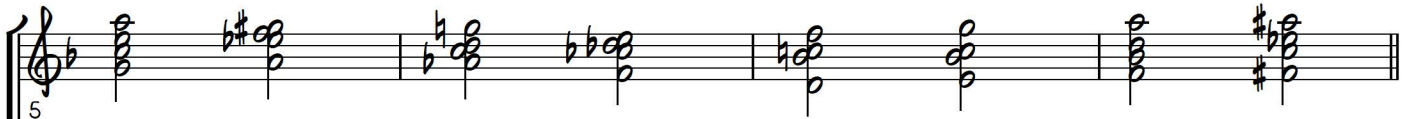
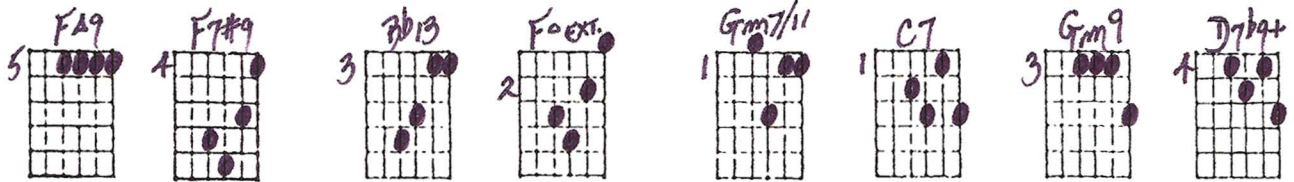
Key of F



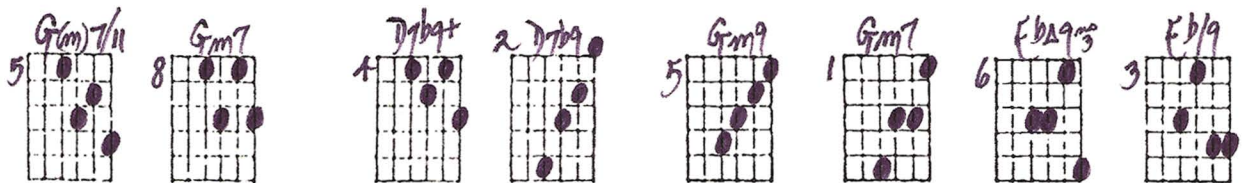
Basic chords:



Pack up all my cares and woes, here I go sing - ing low,

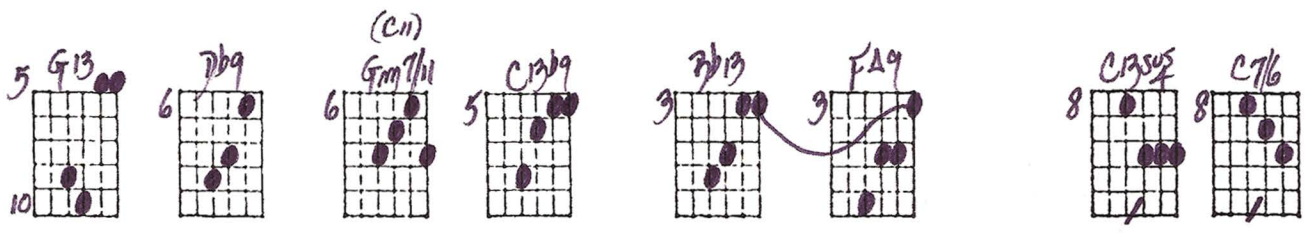


bye, bye, Black - bird.



When some - bo - dy waits for me, sug - ar's sweet, so is she,

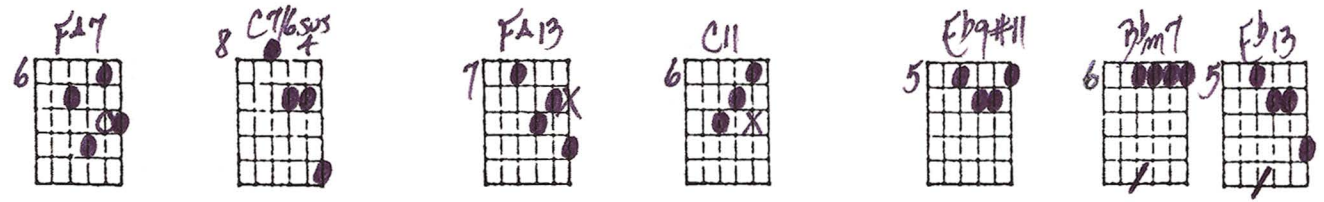
"Bye, Bye Blackbird" - Ted Greene Comping, key of F, p. 2



13

Gm7 C7 F

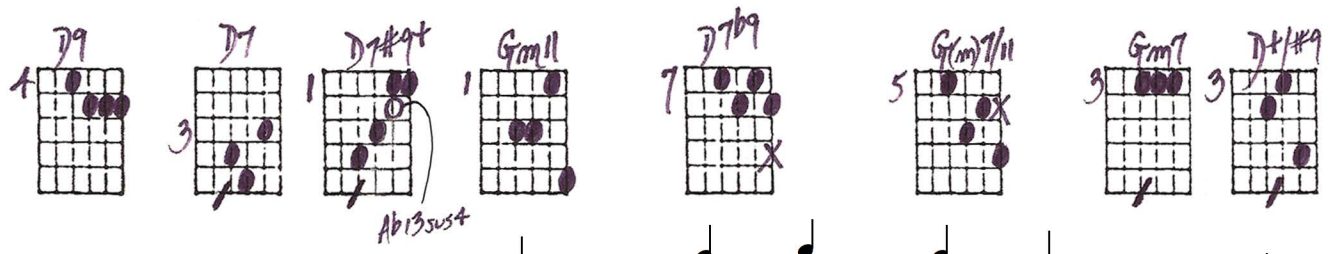
bye, bye, Black - bird.



17

F7 Cm6

No one here can love and un - der - stand

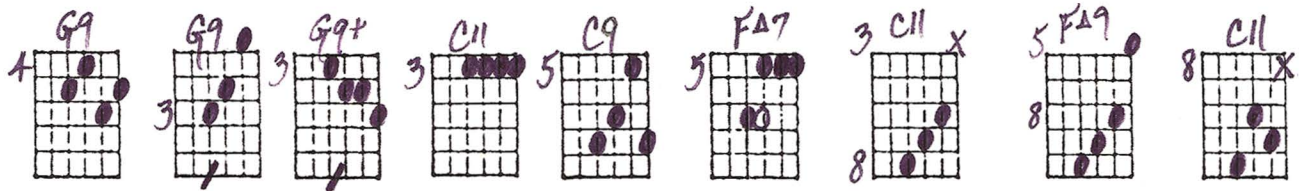


20

D7 Gm

me. Oh, what hard luck sto - ries they all

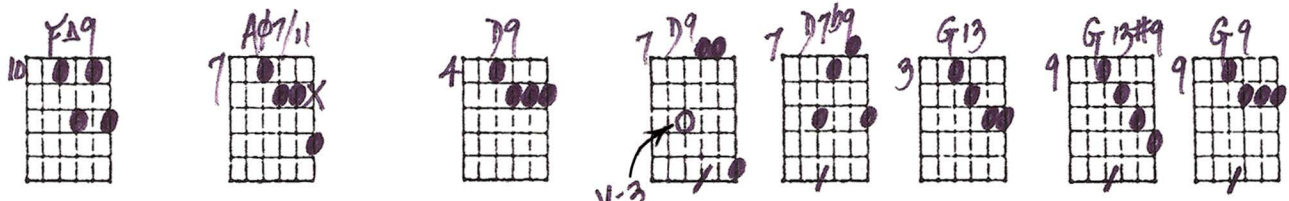
"Bye, Bye Blackbird" - Ted Greene Comping, key of F, p. 3



23

Bbm<sup>6</sup> C<sup>7</sup> F

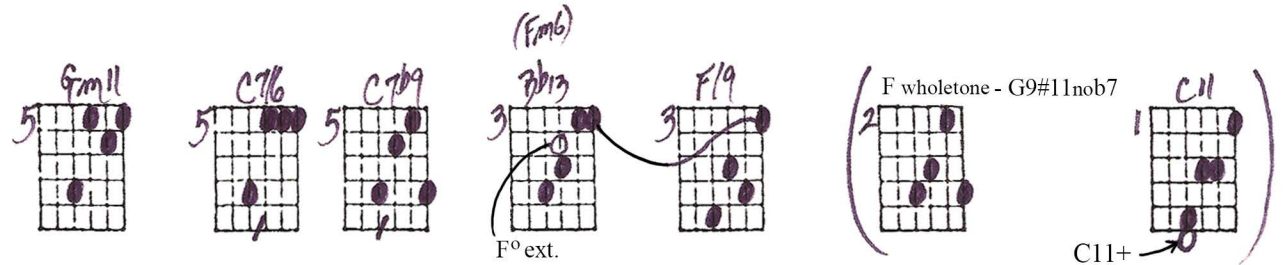
hand me. Make my bed and light the light,



27

C<sup>7</sup> C<sub>m</sub><sup>6</sup> D<sup>7</sup> G<sub>m</sub>

I'll ar - rive late to - night, Black - bird,



30

G<sub>m</sub><sup>7</sup> C<sup>7</sup> F

bye, bye.



ALL CHORDS GET 2 FERTS UNLESS MARKED OTHERWISE

Y-2+Y-1 COMPING-ROPT on the STRINGS

- BYE BYE BLACKBIRD

06-29-09  
Jed Shuman

Range F7

FA7	C11(9sus2)	FA9	C13sus2	D7/11	D7m6	F19	D79	FA9	F7#9
D713	Fo ext.	G(m)7/11	C7	G(m)7	D7b9+	G(m)7/11	G(m)7	D7b9+	D7b9
G(m)9	G(m)7	Fb9#9	Fb9	G13	D79	(C11) G(m)7/11	C139	D713	FA9
C13sus2	C7/6	FA7	C7/6sus2	FA13	C11	Fb9#11	D7m7	Fb13	D9
D7	D7#9+	G(m)11	D7b9	G(m)7/11	G(m)7	D7#9	G9	G9	G9+
C11	C9	FA7	C11 x	FA9	C11	FA9	A7/11	D9	D9
D7b9	G13	G13#9	G9	G(m)11	C7/6	C7b9	D713(Fm6)	F19	F#9#11
C11									

F#9#11 - G9#11

# BYE BYE BLACKBIRD - MY HENDERSON

7-12-79

ORIGINAL  
BASIC  
CHORDS

Handwritten musical notation for the first staff of the piece. The key signature is one sharp (F#) and the time signature is common time (C). The staff contains a sequence of notes with the following chords written above: G, D7, G, A7, Am7, D7, Am7.

Handwritten musical notation for the second staff of the piece. The key signature is one sharp (F#) and the time signature is common time (C). The staff contains a sequence of notes with the following chords written above: E7, Am, Am7, D7, G, G7, Dmb, E7, Am, Cmb.

Handwritten musical notation for the third staff of the piece. The key signature is one sharp (F#) and the time signature is common time (C). The staff contains a sequence of notes with the following chords written above: D7, G, D7, Dmb, E7, Am, Am7, D7, G.