

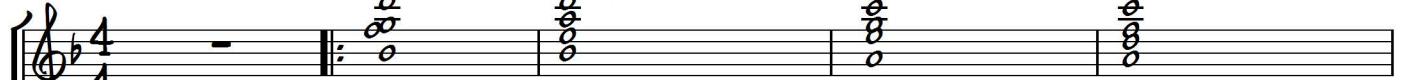
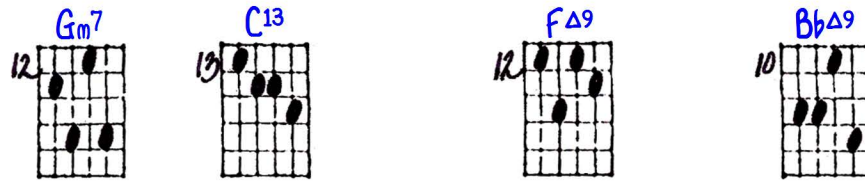
AUTUMN LEAVES

Middle Strings, V-2 Comping

Playing order: ● × □ △
○ = opt.

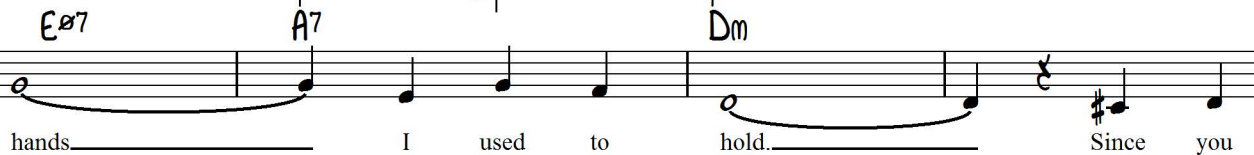
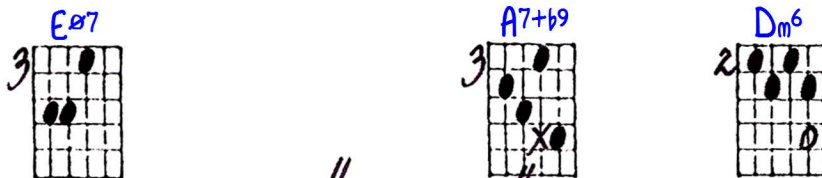
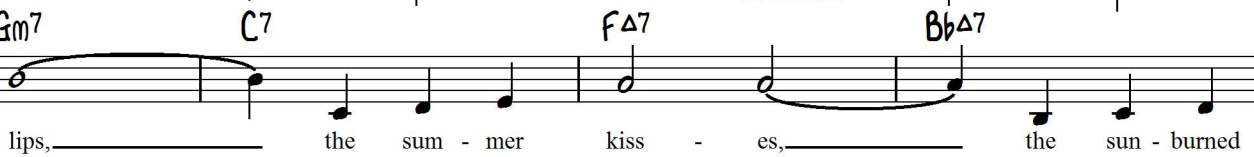
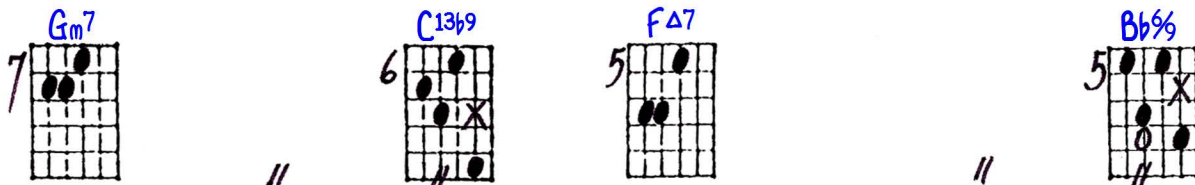
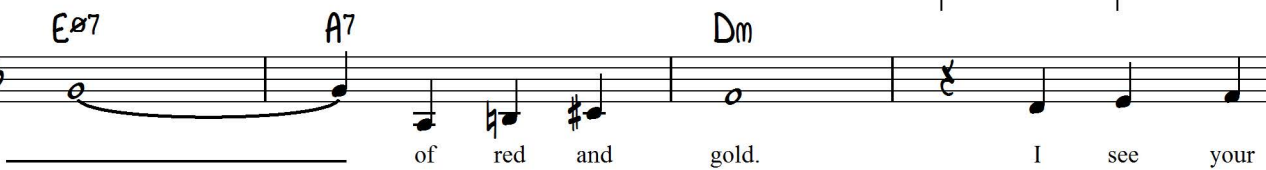
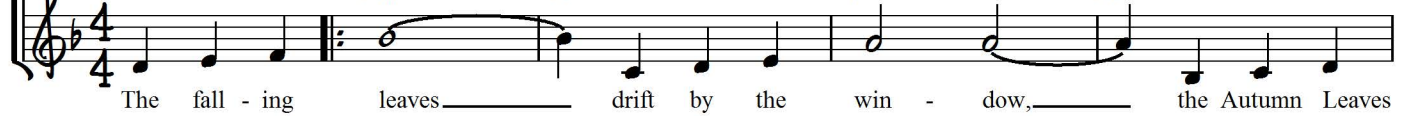
Key of Dm

#1:

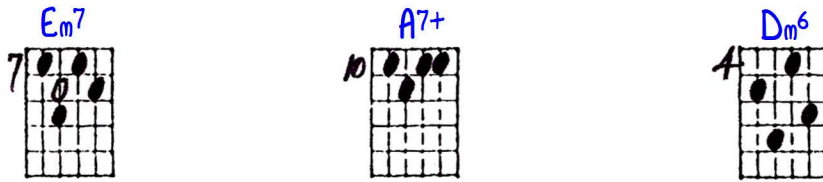


Basic Changes:

Gm7 C7 FΔ7 BbΔ7

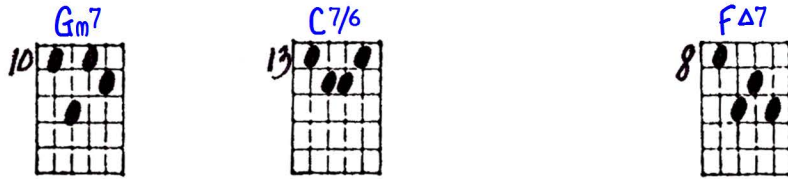


Bass and drums



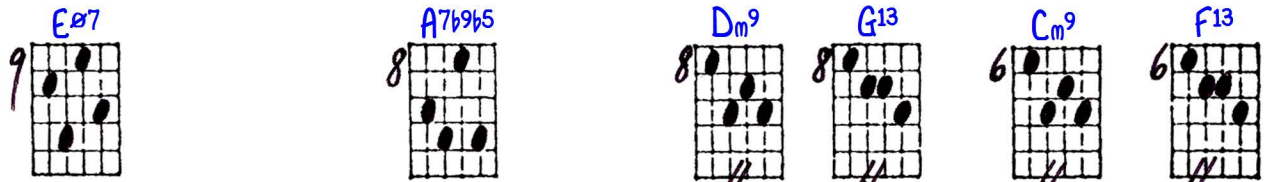
17 **E^o7** **A7^{b9}** **Dm** **Fill**

went a - way the days grow long, and soon I'll



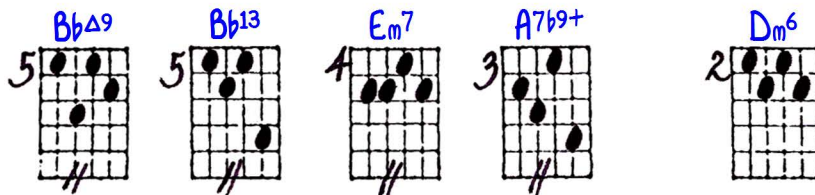
21 **Gm7** **C7** **FΔ7** **Fill**

hear old win - ter's song. But I



25 **E^o7** **A7^{b9}** **Dm7** **D^b7** **Cm7** **C^b7**

miss you most of all my dar - ling, when



29 **B^bΔ⁷** **A7^{b9}** **Dm** **Fill**

Au - tumn Leaves start to fall. The fall - ing

#2:

33

leaves drift by the win - dow, the Autumn Leaves

37

of red and gold. I see your

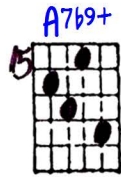
41

lips, the sum - mer kiss - es, the sun - burned

45

hands. I used to hold. Since you

Fill



49

8va

Em7 A7b9+ Dm D7#9+

went a - way the days grow long, and soon I'll

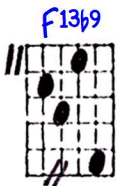
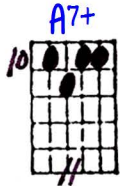
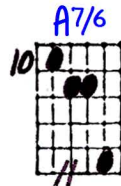
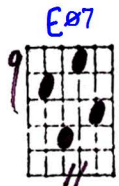


53

8va

Gm7 C7 FΔ7 BbΔ9

hear old win - ter's song. But I

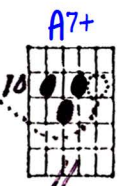
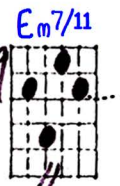
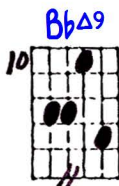


57

8va

EΔ7 A7b9 Dm7 DΔ7 Cm7 CΔ7

miss you most of all my dar - ling, when



61

BbΔ7 A7b9 Dm

Au - - tumn Leaves start to fall.

①

12 13 12 10 9 10 8 8 7 6

5 5 3 3 2 7 10 4

BASS
DRUMS

10 13 8 9 8 8 6 6

②

5 5 4 3 2 10 13 9 8

7 7 7 10 3 6 4 15 15 15

14 13 12 12 12 10 12 15 14

15 13 13 13 12 10 9 12 10 10

14 13 12 11 10 11 9 10 8

Empty guitar fretboard diagrams for the ninth measure of the comping sequence.