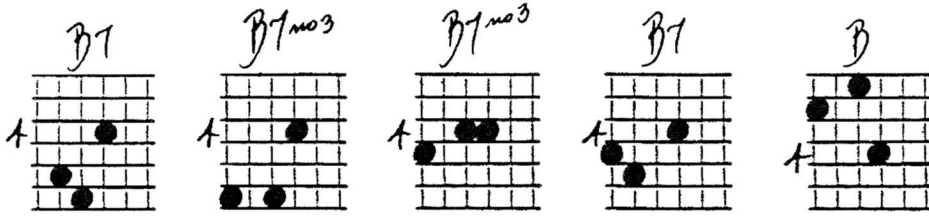


SOPRANO VIEW OF LOW-END DOMINANT CHORDS

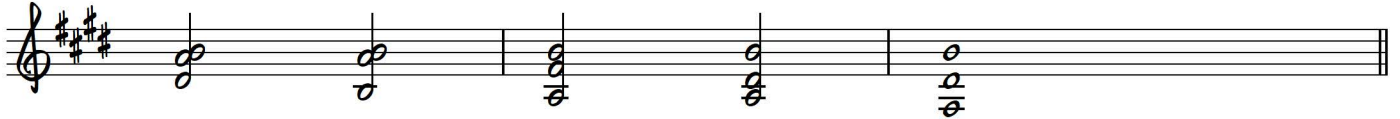
Ted Greene
1987-05-28

(3rd String on Top)

Root on Top:

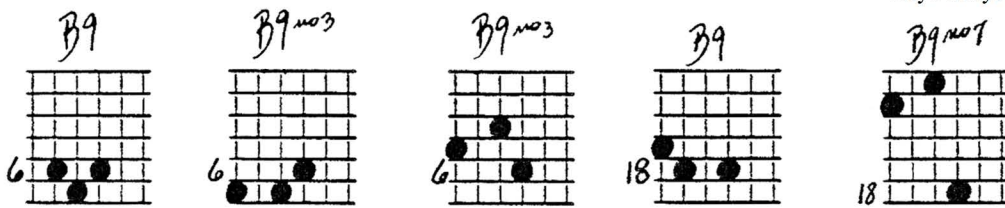


Majors can be used for 7th chords if used before or after them. (Or 9ths or any dominant type within the bounds of good sense.)

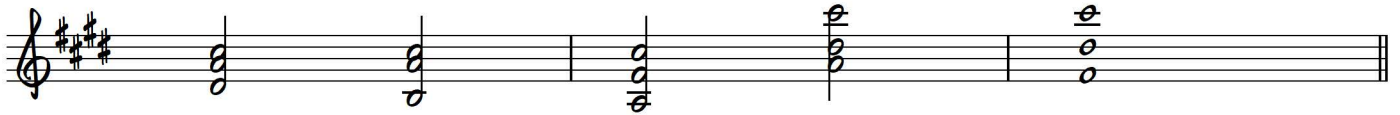


— numerous fingering options —

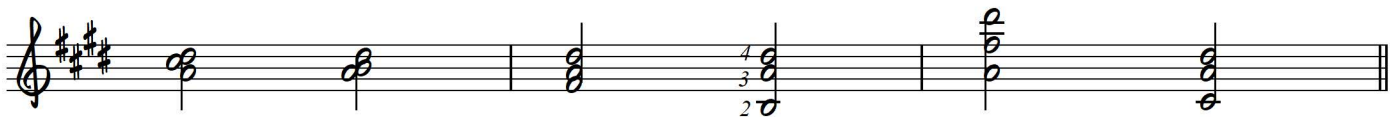
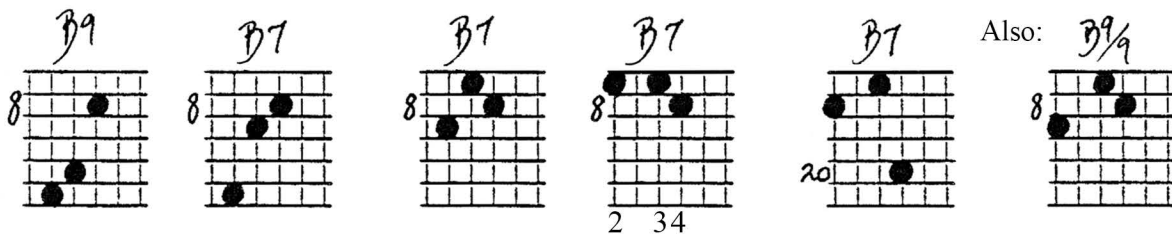
9th on Top:



For higher keys only.



3rd on Top:

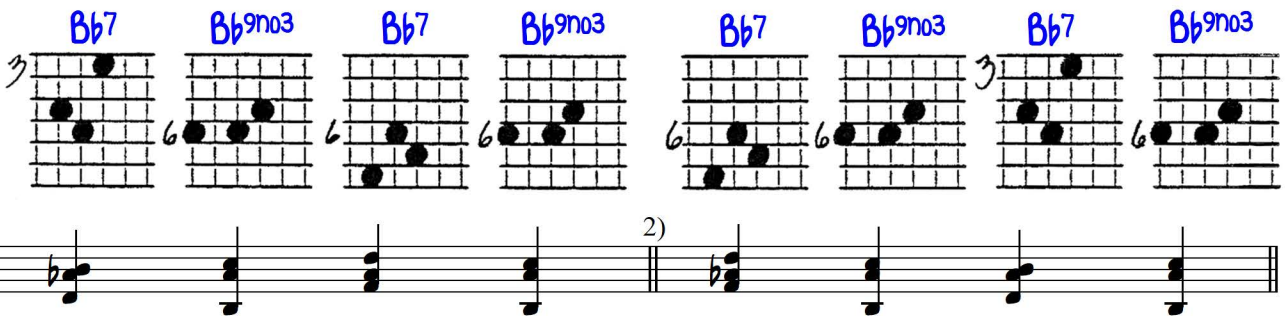


This is an important fingering for this chord (in case you don't already use it).

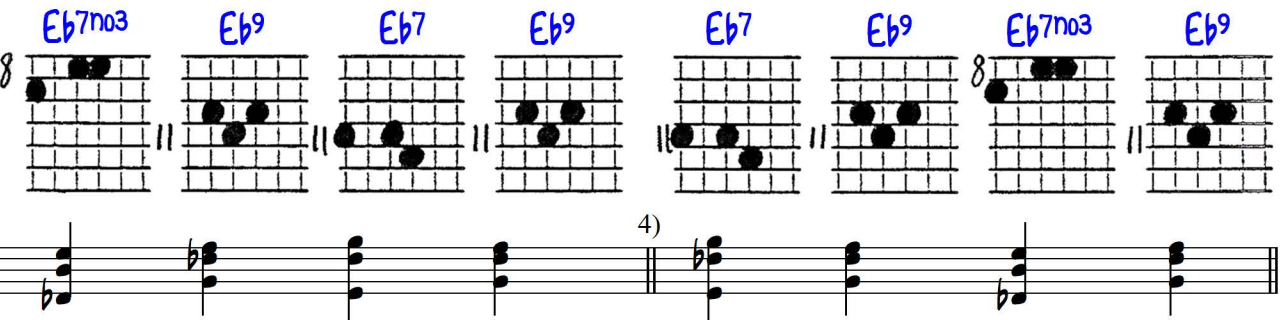
(Surprisingly useful and non-dissonant in certain walking bass or walking chord passages.)

Exercises:

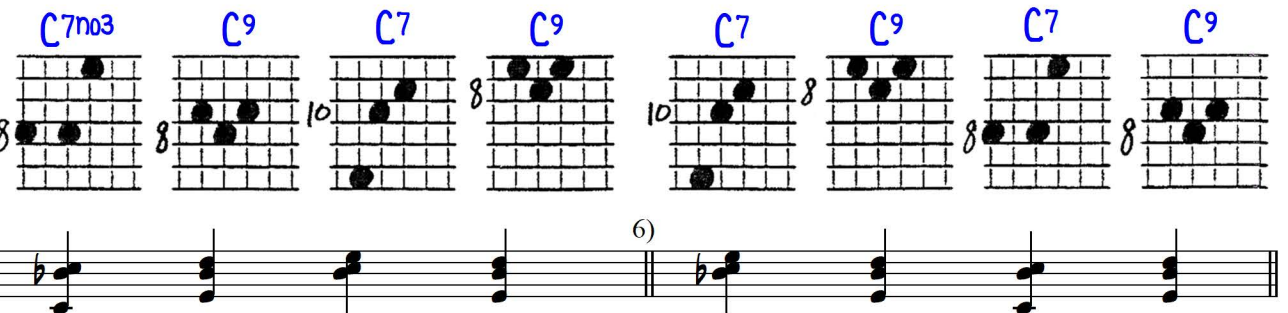
Key of
Bb(7)

1) 

Key of
Eb(7)

3) 

Key of
C(7)

5) 

Assignment:

1) Memorize everything on this page a little at a time. Transposition to other keys is certainly in order, but don't overdo it here...meaning, once you know something, move on, rather than going over and over the material. Use good judgement.

2) To make the exercise section more fun add a walking bass feel by addition of 1/2 step approach tones. Also consider trying a fatin rhythm on the chords....make it fun! Also try 1/2 step Approach Chords and mix all this up.

There are more forms than give on this page for the same soprano notes and chord qualities, but you will have done well for yourself if you master the above. Let me take care of the next step....that's one reason you pay me.

5th on Top:

1) $B7$ $B9^{no3}$ $B7$ $B7$ $B7^{no3}$

Exercises:

2) $B7$ $B7$ $B7$ $B7$ $B7$ $B7$ $B9^{no3}$ $B7$

And back up the board.

or $B7^R_3$

$B9$ $B7$ $B9^{no3}$ $B7$ $B7$ $B7$ $B9^{no3}$ $B7$

And back up.

Also start on the last chord and work backwards.

And back down.

$B7^{no3}$ $B9^{no3}$ $B9$ $B7$ $B7^{no3}$ $B7$ $B9^{no3}$ $B7$

And back up.

Longer exercises
with the co-minor:

3)

Bb7 and
co-minor:

as above -----

Please:

Put emotion and taste into these studies. It's "no good" if you're not having fun with them. Remember about converting to walking bass grooves and also to fatin or other pleasurable rhythms.

SOPRANO VIEW: LOW END DOMINANT CHORDS (3rd string on top)

©5-28-87
Jed Hume

①

5th on top

② EXERCISES:

③ LONGER EXERCISES of the CO-MINOR

PLEASE:

Put emotion and taste into these studies.
 It's 'no good' if you're not having fun with them.
 Remember about converting to walking bass grooves
 + also to latin or other pleasurable rhythms.