

Progressions Using Minor 7th Type Chords

Ted Greene, 1978-08-29

Use (pinch) harmonics and slide, and think melodically.

- Cm7 – Dm7 – Em7 – F#m7 – G#m7 – Bbm7 – Eb/9
- Cm7 – Dm7 – Ebm7 – Fm7 – F#m7 – Abm7 – Am7 – Bm7 (or D7/6, 9, 13,...) – E/9
- Cm7 – Dm7 – Bm7 – E11 – A^Δ7 – Am7 – Bm7
- Cm7 – Dm7 – Bm7 – C#m7 – Ebm7 – Ab11 – Db^Δ9
- Cm7 – Dm7 – Am7 – Bm7 – F#m7 – (Abm7) – Db11 – Gb/9
- Cm7 – Dm7 – Am7 – Bm7 – F#m7 – Abm7 – Eb/9
- Cm7 – Dm7 – Am7 – Bm7 – F#m7 – Abm7 – Bbm7 – Eb
- Cm7 – Dm7 – Am7 – Bm7 – F#m7 – Abm7 – C#m7 – F#/9

5ths:

Typical: Cm9 – Gm11 – Dm7 – Am9 (inside 9th) – Em11 – Bm9 (inside 9th) etc.

Major 3rds:

Cm9 – Em9 – Abm9 – Cm9

- 3 - - 2 - - 3 - - 3 -

Cm9 – Em11 – F#m7 – Bbm7 – Dm11 – (Em7) – A^Δ9

Minor 3rds:

- Cm7 – Am9 – F#m9 – Ebm9 – Cm9
- Cm7 – Am9 – Bm7 – Abm9 – Bbm7 – Gm9 – D/9 or C/9
- Cm7 – Am9 – Em7 – C#m7 – Abm7 – Fm7
- Cm7 – Am9 – Em7 – F#m7 – Bbm9 – Gm9
- Cm7 – Am9 – Em7 – F#m7 – C#m7 – Ebm7 – Bbm7 – F/9

Bbm7/11

The diagram shows a fretboard for the Bbm7/11 chord. The notes are: 6th string (open), 5th string (2nd fret), 4th string (3rd fret), 3rd string (4th fret), 2nd string (5th fret), and 1st string (open). The musical notation below shows a melodic line starting on the 5th string, 2nd fret, moving up to the 4th string, 3rd fret, then to the 3rd string, 4th fret, and finally to the 2nd string, 5th fret, with a slide and pinch harmonic indicated.

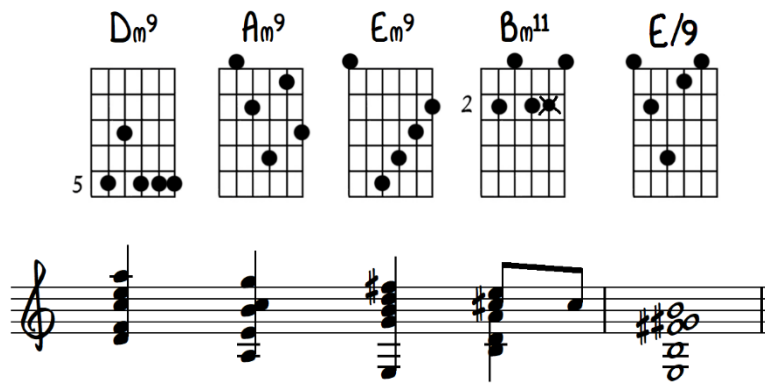
F#m11 Bm7/11

Down in minor 3rds

The diagram shows two fretboard diagrams. The first is for F#m11 (12th fret: 6th string 12th fret, 5th string 10th fret, 4th string 12th fret, 3rd string 10th fret, 2nd string 12th fret, 1st string 10th fret). The second is for Bm7/11 (12th fret: 6th string 12th fret, 5th string 10th fret, 4th string 12th fret, 3rd string 10th fret, 2nd string 12th fret, 1st string 10th fret). The musical notation below shows a descending minor 3rd interval from F#m11 to Bm7/11.

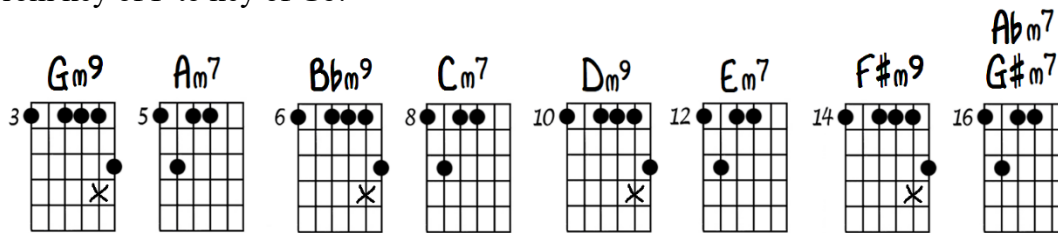
"Progressions Using Minor 7th Type Chords" – Ted Greene, p.2

Dm^9
 Am^9
 Em^9
 Bm^{11}
 $E/9$



From key of F to key of Gb:

Gm^9
 Am^7
 Bbm^9
 Cm^7
 Dm^9
 Em^7
 $F\#m^9$
 Abm^7
 $G\#m^7$



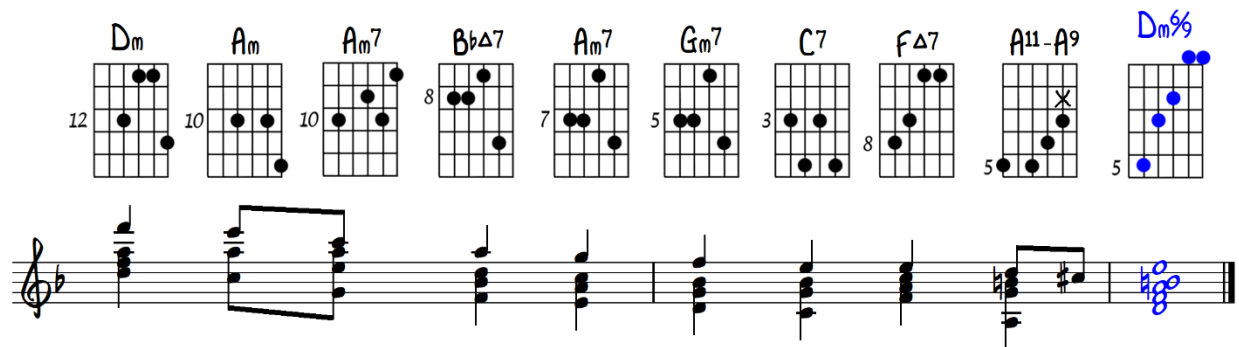
20th Century Romantic Minor (7)

Example in Dm:

Small 4-note $Dm^{F/D} - Am^6 - Am^7_2 - Bb^{\Delta 7/3} - Am^{7^4/3} - Gm^{7^4/3}, C7 - F^{\Delta 7} - A^{11} - A^9$

"20th Century Romantic Minor" example (one possible voicing based on Ted's notes):

Dm
 Am
 Am^7
 $Bb^{\Delta 7}$
 Am^7
 Gm^7
 $C7$
 $F^{\Delta 7}$
 $A^{11} - A^9$
 $Dm^{\%}$



PROGRESSIONS USING MINOR 7th TYPE CHORDS

8-29-78

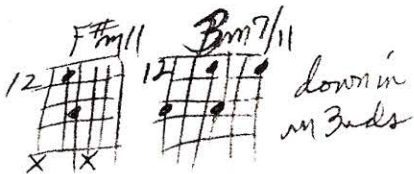
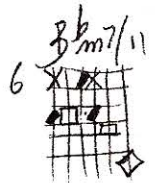
USE (PINKY)
HARMONICS
& SLIDE
+ CHORDS
MELODICALLY

Cm7 Dm7 Em7 F#m7 G#m7 Bbm7 Eb/9
 Cm7 Dm7 Ebm7 Fm7 F#m7 Abm7 Am7 Bm7 E/9
 Cm7 Dm7 Bm7 E11 AΔ7 Cm7 Dm7 Bm7 C#m7 Ebm7 Ab11 DbΔ9
 Cm7 Dm7 Am7 Bm7 F#m7 (Abm7) Db11 Gb/9
 Cm7 Dm7 Am7 Bm7 F#m7 Abm7 Eb/9 or Bbm7 Eb
 Cm7 Dm7 Am7 Bm7 F#m7 Abm7 C#m7 F#1/9

5ths: ^{TYPICAL} Cm9 Gm11 Dm7 ^{INSIDE 9th} Am9 ^{INSIDE 9th} Em11 Bm7 etc.

Major 3rds: Cm9 Em9 Abm9 Cm9 Cm9 Em11 F#m7 Bbm7 Dm11 (Em7) AΔ9

Minor 3rds: Cm7 Am9 F#m7 Ebm9 Cm9
 Cm7 Am9 Bm7 Abm9 Bbm7 Gm9 D/9 or C/9
 Cm7 Am9 Em7 C#m7 Abm7 Fm7
 Cm7 Am9 Em7 F#m7 Bbm9 Gm9
 Cm7 Am9 Em7 F#m7 C#m7 Ebm7 Bbm7 F/9



from key of F to key of Gb
 Gm9 Am7 Bbm9 Cm7 Dm9 Em7 F#m9 G#m7



20th CENT ROMANTIC MINOR

example in Am:

Small Dm ^F Am ₆ Am7 Bb7/3 Am7/3 Gm7/3 C7 F7 A11A9