

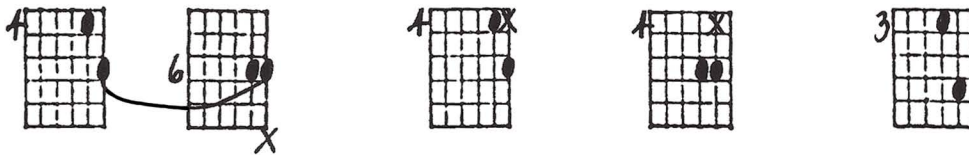
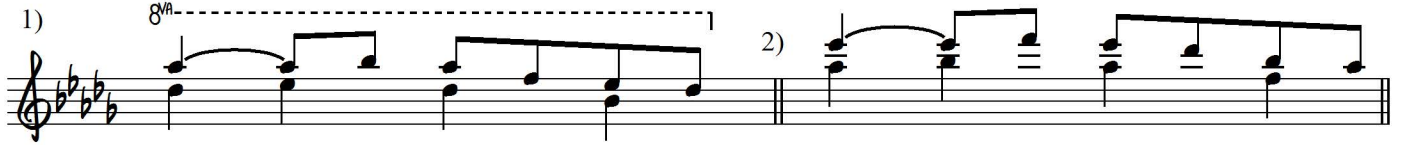
Major Pentatonic:

2-Note Pentatonic with Dots and Ties
in the Soprano / in the Lower Voice

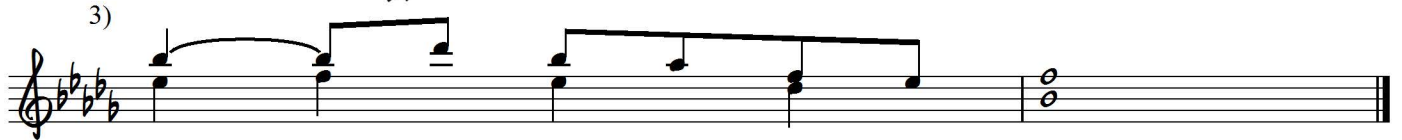
Playing ● × □ △
order: ○ = opt.

PART 7

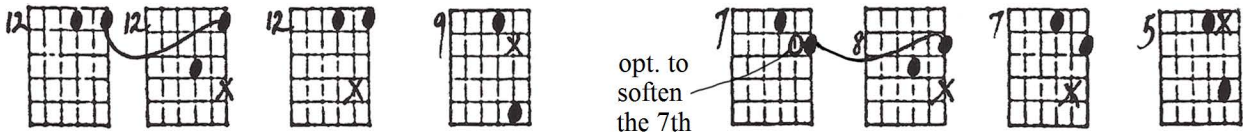
Db Major
Pentatonic



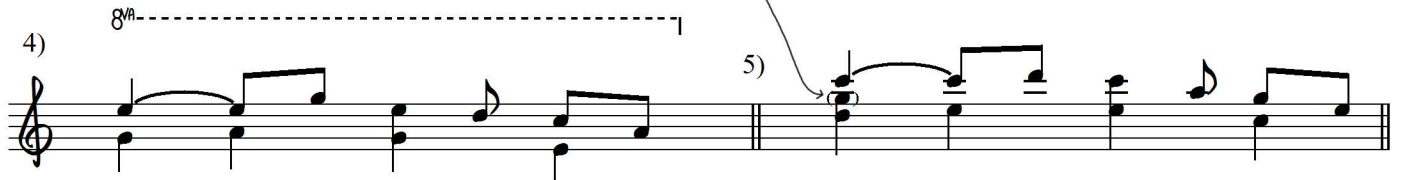
"relative minor"



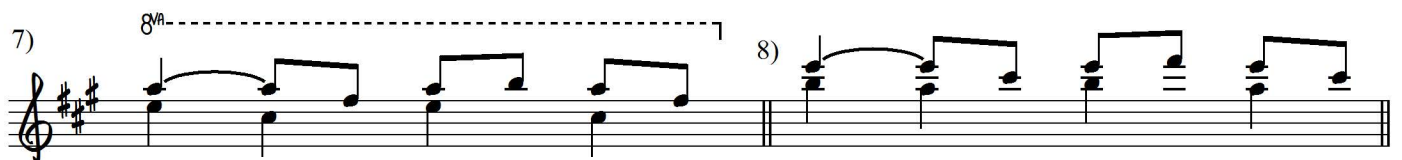
Key of C



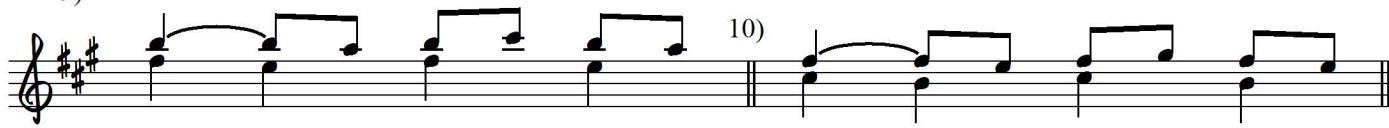
opt. to soften
the 7th



Key of A



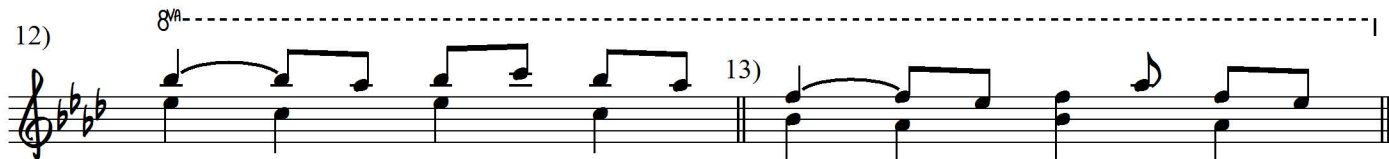
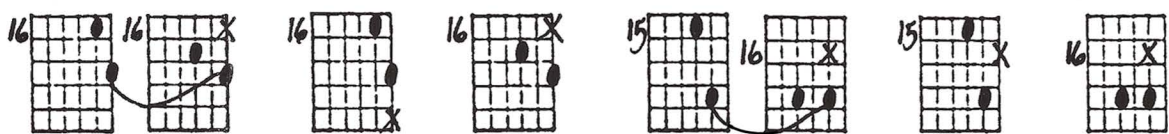
9)



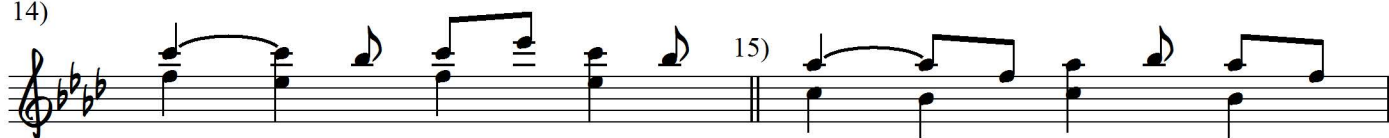
11)



Key of Ab



14)

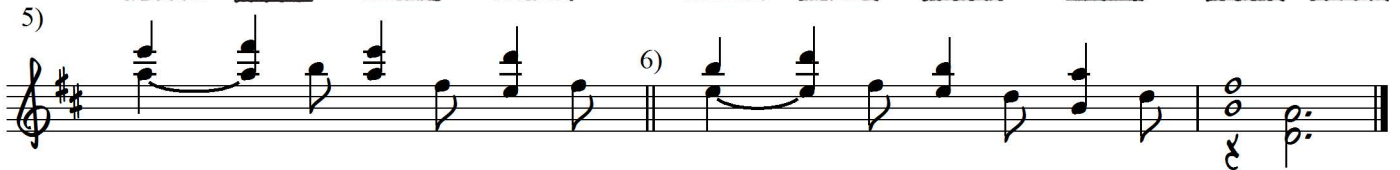
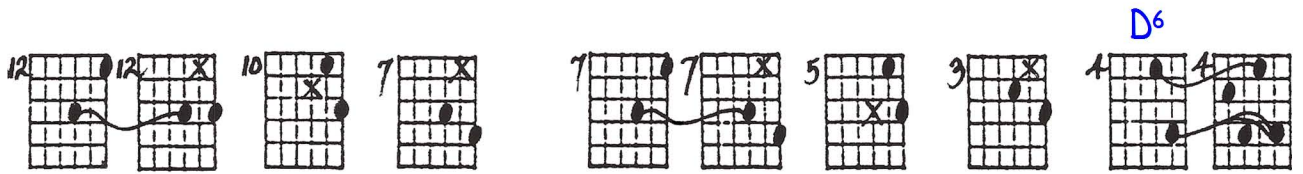
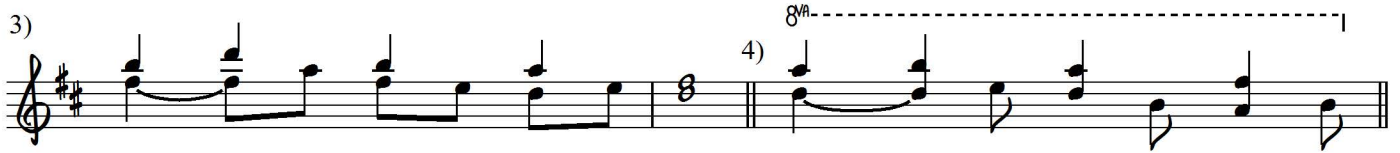
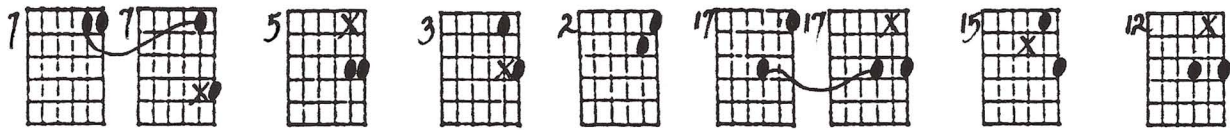
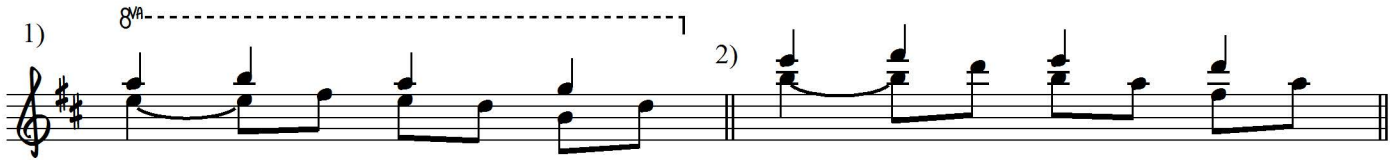
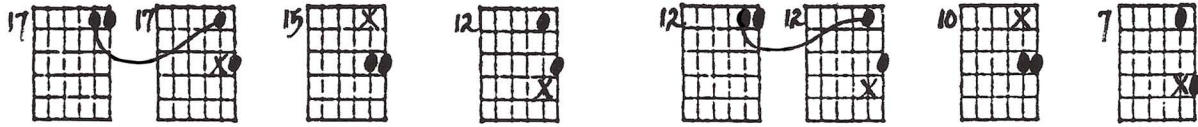


optional ending:

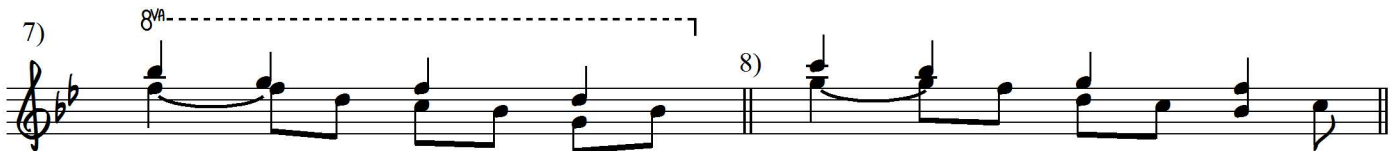


PART 8

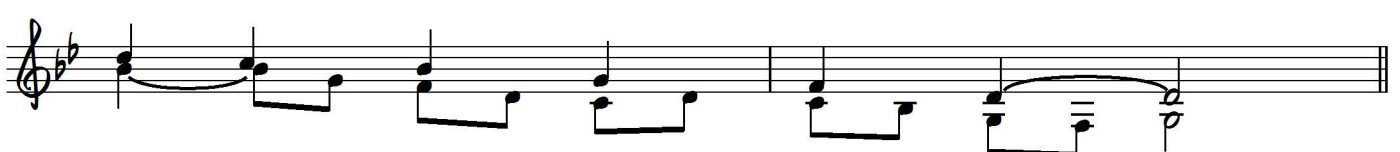
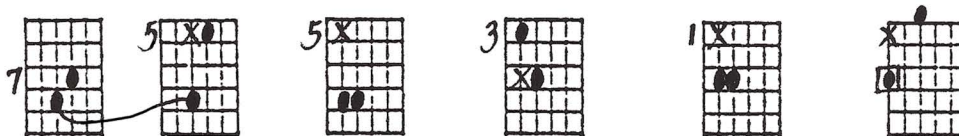
Key of D



Key of Bb



Ending in relative minor

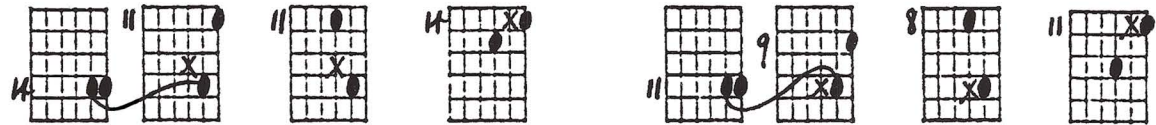




10) 8^{th} -----|

12)

Key of Gb

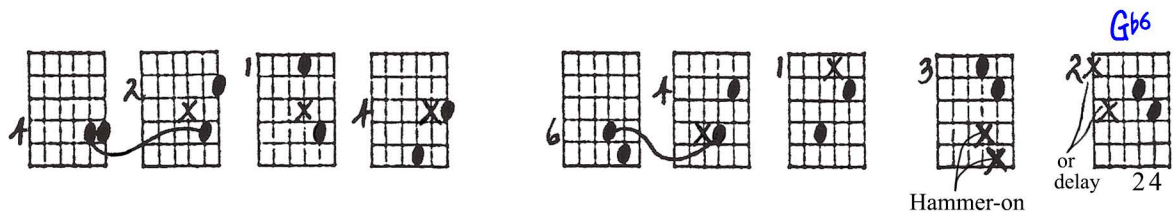


13) 8^{th} -----|

14)

15)

16)



17)

18)

2 NOTE PENTATONIC WITH DOTS and TIES in the SOPRANO

© 2005
Jed Brown

D♭ MAJOR PENT.

The image displays a series of guitar fretboard diagrams for the D-flat major pentatonic scale in the soprano position. The diagrams are organized into several rows, each showing different fingerings and positions. The notes of the scale are represented by dots on the strings, and 'X' marks indicate fretted notes that are not part of the pentatonic scale. Arrows and numbers indicate fingerings and transitions between positions.

Key annotations include:

- RELATIVE MINOR**: A vertical line separates the first two rows, indicating the relative minor scale.
- Key of C**: A vertical line separates the second and third rows.
- Key of A**: A vertical line separates the third and fourth rows.
- Key of Ab**: A vertical line separates the fourth and fifth rows.
- OPT. ENDING:**: A bracketed section in the sixth row indicates an alternative ending for the scale.

The diagrams are arranged in a grid-like fashion, with each diagram showing a specific fretboard position and fingering. The notes of the D-flat major pentatonic scale are G♭, A♭, B♭, C, and D♭. The diagrams show various ways to play these notes across the fretboard, including ties and dots.

2 NOTE PENTATONIC with DOTS and TIES in the LOWER VOICE

1-2585
© [signature]

Key of D

17 17 15 12 12 12 10 7 7 7

5 3 2 17 17 15 12 12 12 10

7 7 7 5 3 4 4 15 11

8 8 6 5 5 7 5 5 3 1

ENDING ON RELATIVE MINOR

X 15 15 12 12 13 12 8 8 5

5 5 3 3 11 11 11 4 11 9

8 11 6 6 9 6 1 3 6

1 2 1 1 6 1 3 2

HARMONY ON
DELAY