

Major Pentatonic:

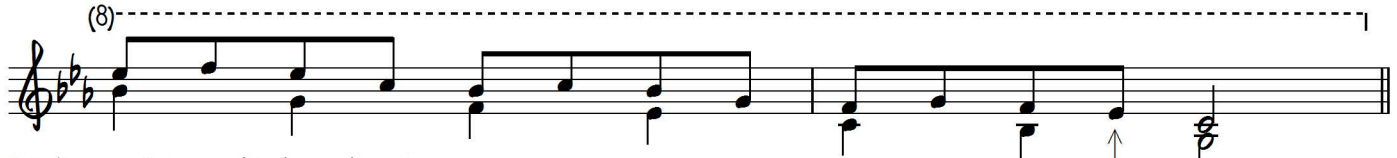
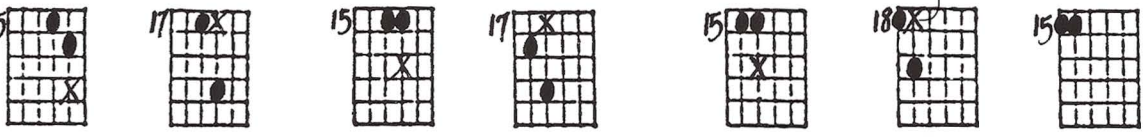
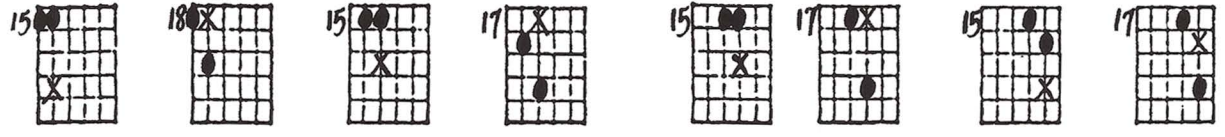
2 Voices, 2-to-1 Soprano Weaving through Adjacent Positions

Playing order: ● X □ △
○ = opt.

PART 1

Key of Eb

1)

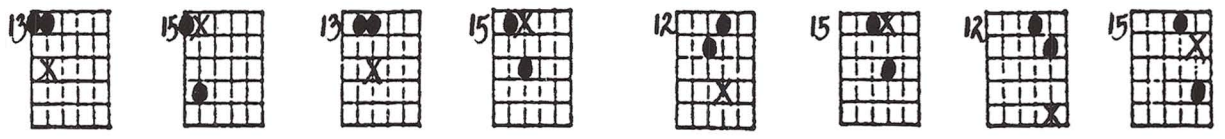


1a) Assume 1st sound to be on beat 4.
1b) Extend upward range initially to include the top 2 strings

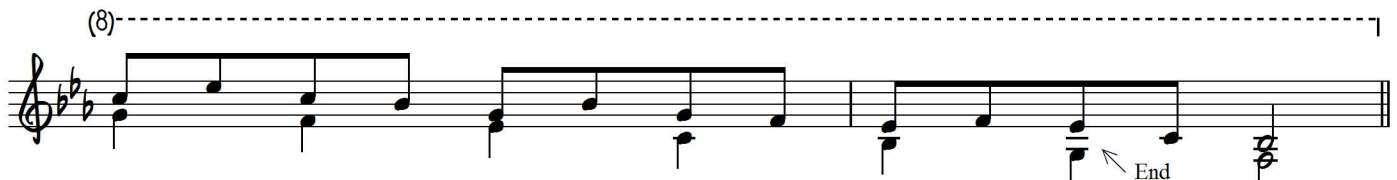
End here for 1a

End here for 1a

2)



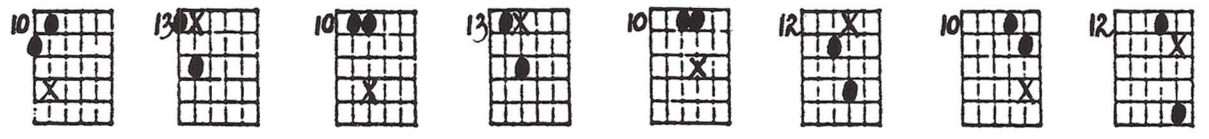
And do 2a,
2b as well.



End for 1a

End for 1a

3)



And do 3a,
3b as well.

Diagram 10: Diagram 12: Diagram 10: Diagram 13: Diagram 10: Diagram 13: Diagram 10: Musical notation: Treble clef, key signature of two flats (Bb, Eb). Melody line with eighth notes and a dotted quarter note. Bass line with chords.

4)

Diagram 8: Diagram 10: Diagram 8: Diagram 10: Diagram 8: Diagram 10: Diagram 8: Diagram 10: Musical notation: Treble clef, key signature of two flats (Bb, Eb). Melody line with eighth notes and a dotted quarter note. Bass line with chords.

And do 4a,
4b as well.

Diagram 8: Diagram 10: Diagram 8: Diagram 10: Diagram 8: Diagram 10: Diagram 8: Diagram 10: Musical notation: Treble clef, key signature of two flats (Bb, Eb). Melody line with eighth notes and a dotted quarter note. Bass line with chords.

5)

Diagram 6: Diagram 8: Diagram 5: Diagram 8: Diagram 5: Diagram 8: Diagram 5: Diagram 8: Musical notation: Treble clef, key signature of two flats (Bb, Eb). Melody line with eighth notes and a dotted quarter note. Bass line with chords.

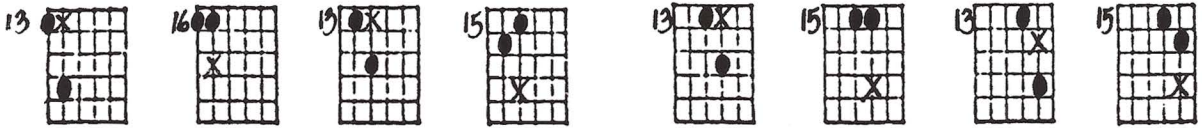
And do 5a,
5b as well.

for 5a:

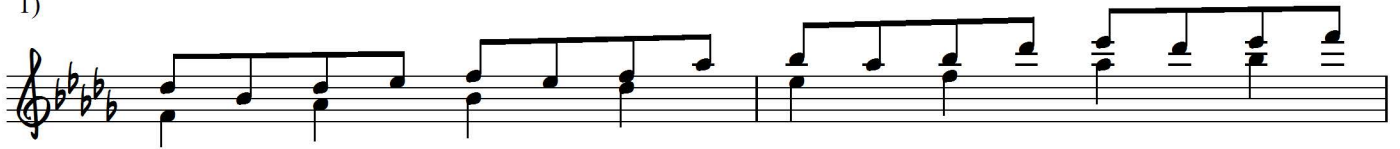
Diagram 5: Diagram 8: Diagram 5: Diagram 8: Diagram 5: Diagram 8: Diagram 6: Musical notation: Treble clef, key signature of two flats (Bb, Eb). Melody line with eighth notes and a dotted quarter note. Bass line with chords.

PART 2

Key of Db



1)



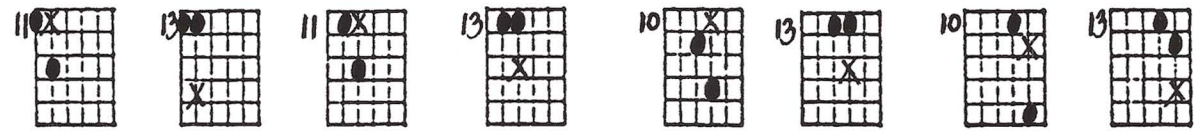
End here for 1a



1a) Assume 1st sound to be on beat 4.

1b) Continue upward motion to top 2 strings with both time feels

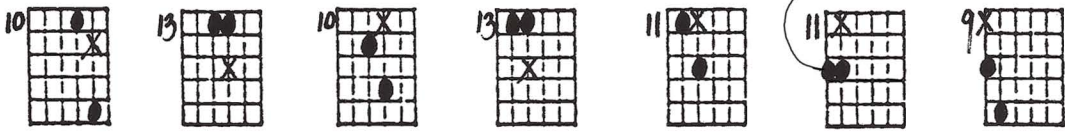
↑ End here for 1a



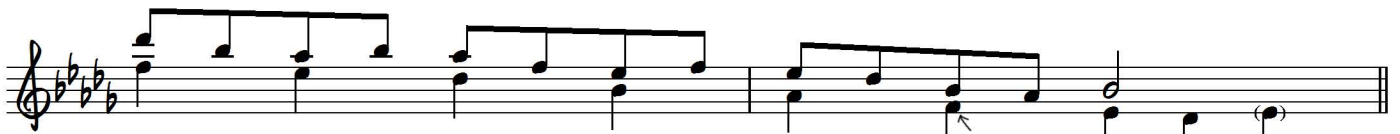
2)



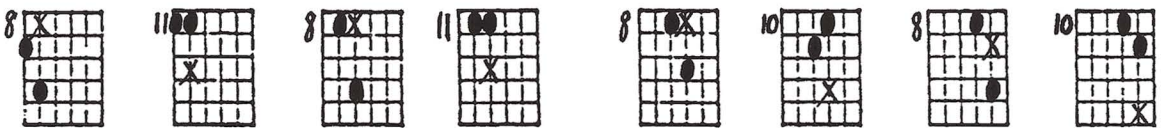
And do 2a,
2b as well



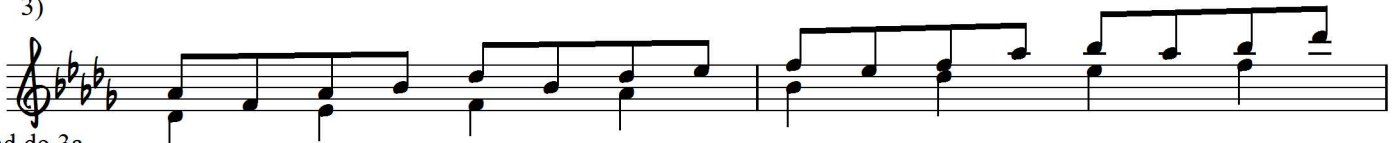
End here for 2a



End here for 2a



3)



And do 3a,
3b as well

8 10 8 11 8 11 9

End here for 3a

4) 6 8 6 8 6 8 6 8

End for 4a

And do 4a,
4b as well

6 8 6 8 6 8 6

End for 4a

5) 10 6 3 6 3 6 3 6

End for 5a

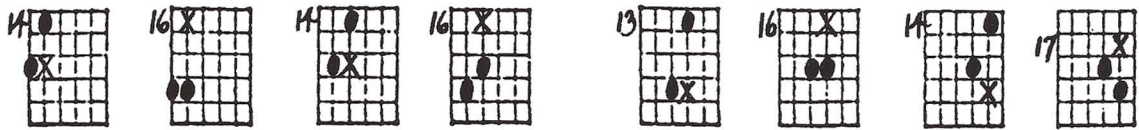
And do 5a,
5b as well

3 6 3 6 3 6 10 1

End for 5a

PART 3

Key of E



1)



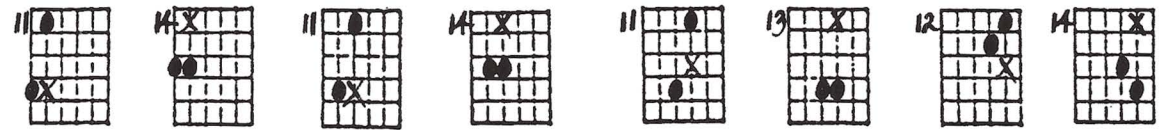
For 1a:



For 1a



1a) Start on beat 4. 1b) Include top pair of strings.

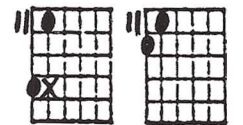


2)

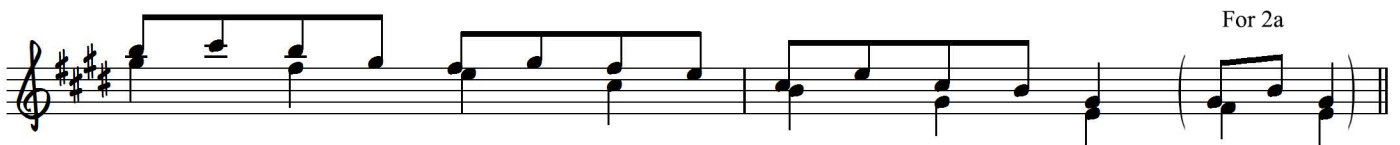


And do 2a, 2b as well.

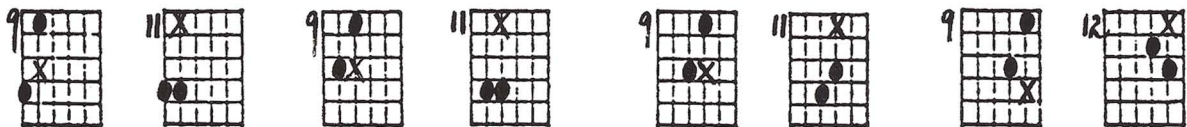
For 2a:



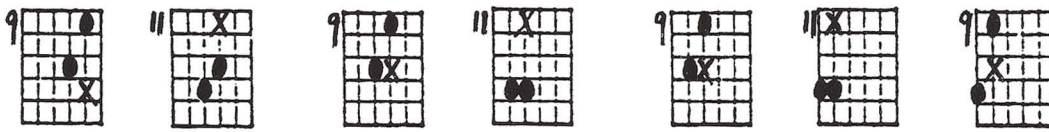
For 2a



3)



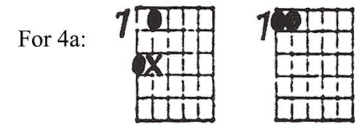
And do 3a, 3b as well.



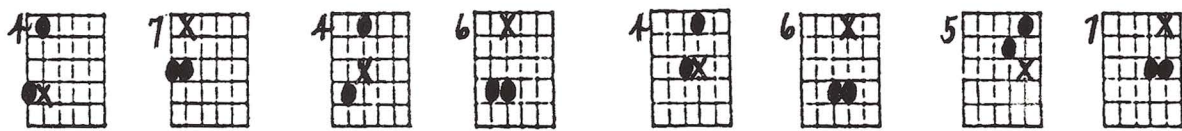
4)



And do 4a,
4b as well.



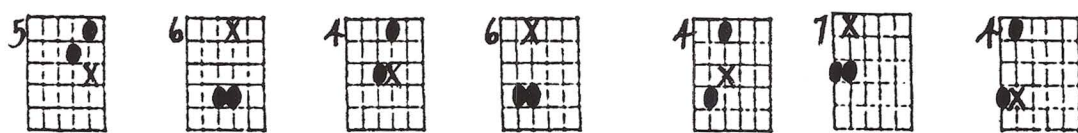
For 4a



5)



And do 5a,
5b as well.



MAJOR PENTATONIC;
2 VOICES, 2 to 1 SOPRANO WEAVING THRU ADJACENT POSITIONS

© 1-26-85
Jed Yarrow

Key of E^b

①

⑩ ASSUME
1ST SOUND
TO BE ON
BEAT 4

⑪ EXTEND
UPWARD
RANGE INITIALLY
TO INCLUDE THE
TOP 2 STRINGS

② and do 2a, 2b as well

③ and do
3a, 3b
as well

④ and do 4a, 4b as well

⑤ and do 5a, 5b as well

MAJOR PENTATONIC:

2 VOICES, 2 to 1 SOPRANO WEAVING THRU ADJACENT POSITIONS

© 2005
J. Williams

Key of D^b

①

①a) Assume 1st SOUND TO BE ON BEAT 4

② and do 2a, 2b as well

①b) CONTINUE UPWARD MOTION TO TOP 2 STRINGS w/ BOTH THUMB FEELS

②

③ and do 3a, 3b as well

③

④ and do 4a, 4b as well

④

⑤ and do 5a, 5b as well

⑤

MAJOR PENTATONIC:
2 VOICES, 2 to 1 SOPRANO in ADJ. POS.

© 1975
J. J. Johnson

Key of E

①

①a START ON BEAT 4

①b INCLUDE TOP PAIR OF STRINGS

② and do 2a, 2b as well

③ and do 3a, 3b as well

④ and do 4a, 4b as well

⑤ and do 5a, 5b as well

MAJOR PENTATONIC:
2 VOICES, 2 to 1 SOPRANO THRU ADJ. POS.

© 1978-85
J. Williams

Key of F_b

①

13 X 15 ● 13 X 15 ● 12 X 15 ● 13 X 16 ● 13 X 15 ●

② START ON BEAT 4

③ INCLUDE TOP PAIR OF STRINGS

12 X 15 ● 13 X 15 ● 15 ● 10 X 13 ● 10 X 13 ● 10 X 13 ●

② and do 2a, 2b too

12 ● 11 X 13 ● 11 X 12 ● 10 X 13 ● 10 X 13 ● 13 ● 10 X 13 ●

③ and do 3a, 3b too

8 X 10 ● 8 X 10 ● 8 X 10 ● 8 X 10 ● 8 X 10 ● 8 X 11 ● 8 X 10 ● 10 ●

8 X 10 ● 8 X 10 ● 10 ● 8 X 10 ● 8 ● 6 X 8 ● 5 X 8 ●

④ and fa, fb too

8 ● 5 X 8 ● 6 X 8 ● 8 ● 6 X 8 ● 8 ● 5 X 8 ● 8 ● 5 X 8 ●

⑤ and do 5a, 5b too

8 ● 6 X 3 X 6 ● 3 X 5 ● 3 X 5 ● 4 X 6 ● 6 ●

4 X 5 ● 3 X 5 ● 6 ● 6 ●

End HERE for 5a